

4路SD卡 h.264 3g SD 网络 DVR GPS 车载录像机

型号: RCM-MDR501Wdg

特点:

1. 4路SD卡 网络 DVR
2. 支持 3g/GPS 网络
3. 支持 PTZ 云台控制
4. 支持 报警输入
5. 支持 SD 卡录像
6. SD 卡录像支持循环覆盖
7. 支持红外夜视
8. 支持报警联动录像

外观

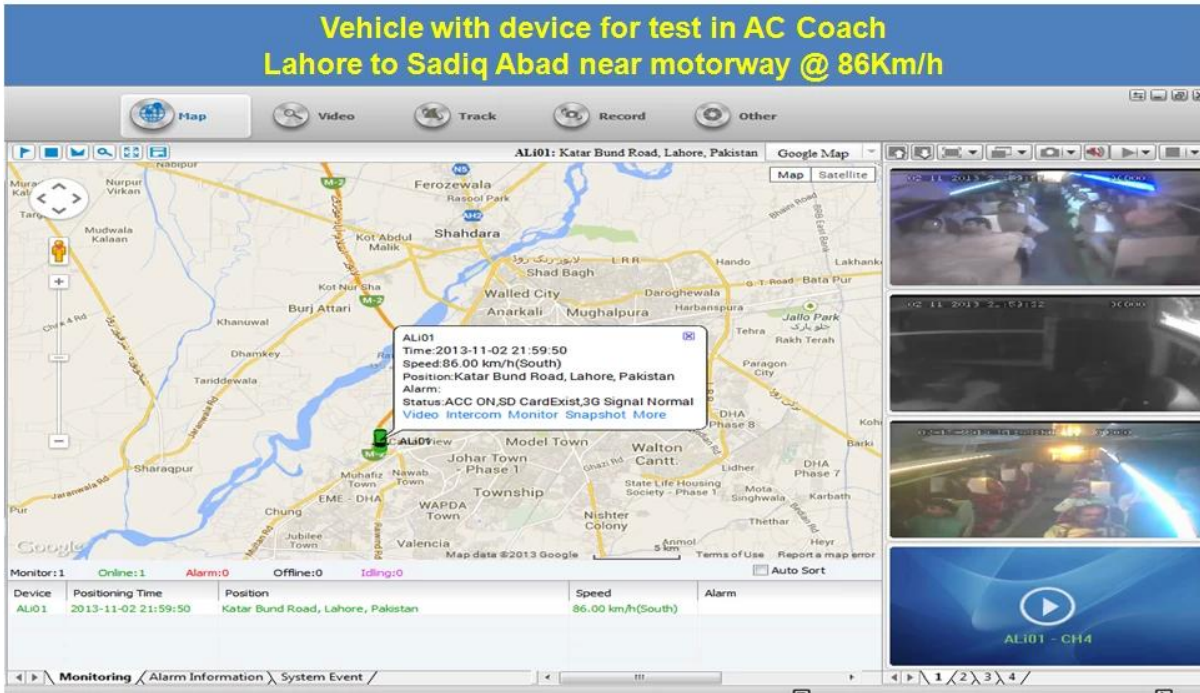




SD	SD	4通道SD卡
操作系统	linux	
视频输入	4ch SDI 输入: 1.0 vp-p, 75Ω. 1通道 PAL/NTSC 输入 1.0 vp-p, 75Ω, 1通道4通道	
帧率	PAL: 25frames/s;NTSC:30/s PAL: 100 帧/s;NTSC: 120 帧/s	
分辨率	2通道500线 1通道 (4 通道)	
信噪比	1.0 – 2.2 v ≤-30dB	
音频	adpcm	
通道	4通道	
网络	3g	支持1G WCDMA 支持 CDMA2000 支持
GPS	gps	支持 GPS 定位
功耗		
工作电压	DC8-36v 5% ≤10w	
工作温度	-20 °C ~ + 85 °C ≤ 80%	
尺寸		

□□	□□□□□□	170 (L) * 141(W) * 41(H) mm
	□□□□□□	0.7□□

□□□ CMS □□□□□□□□□□□□□□□□:

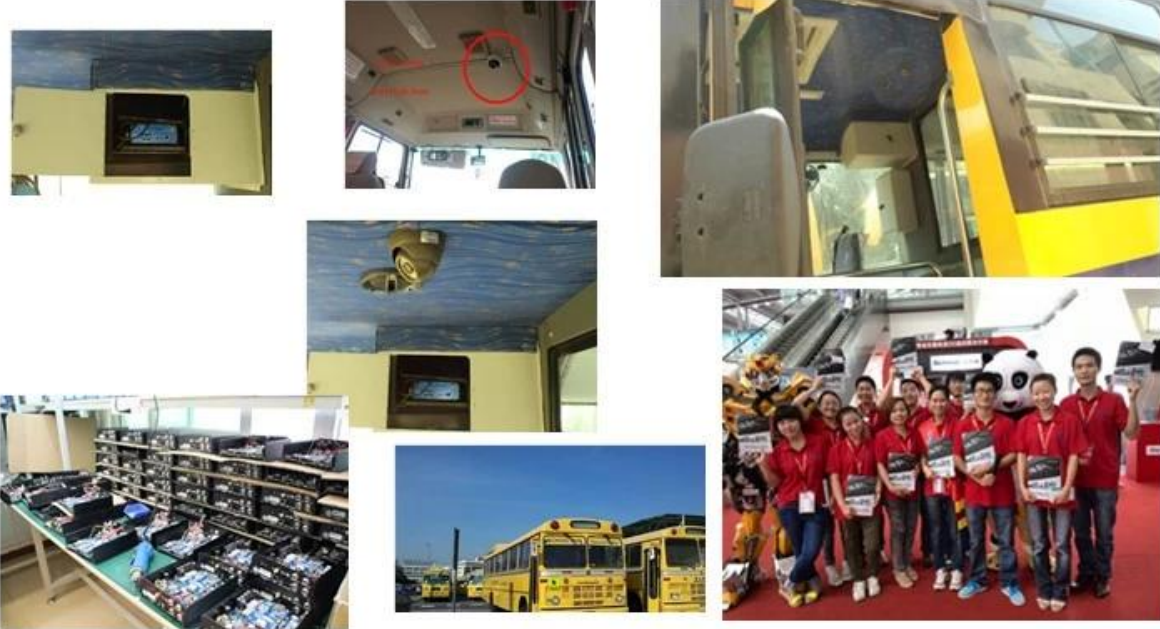
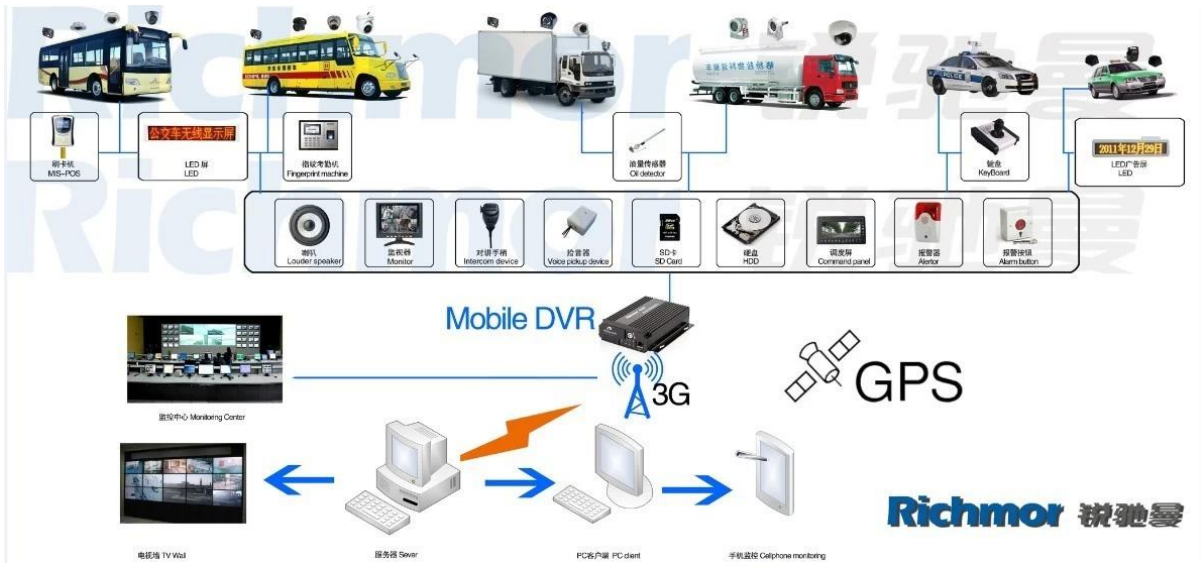


□ Windows PC □□□□□□□□

□ IOS □□□□□□ OS □□□□□□□□



□□□□□□□□□□ **DVR** □□□□□□



□□:

VERIFICATION OF CONFORMITY

Verification of Conformity
Reference No. LC0134008719

Responsible Party: Shenzhen Ruckun Technology Development Co., LTD.
Address: 27 No.44 West Longgang Road, Longhua New District, Shenzhen, China
Product: Camera
Model No.: RCM-PC21A, RCM-PC21B, RCM-LPC21A, RCM-LPC21B, RCM-AP21A, RCM-AP21B, RCM-SD, RCM-AE, RCM-SL, RCM-SM, RCM-SH, RCM-SK, RCM-SL, RCM-SM, RCM-SH, RCM-SK, RCM-SD21A, RCM-SD21B, RCM-SD21C, RCM-SD21D

Trade Mark: Ruckun
Standard: FCC CFR 47 PART 15 Subpart B, 2011, ANSI C63.4-2008

Important note:
This device is in compliance with Part 15 of the FCC Rules and Regulations for radio frequency devices. Operation of the product is subject to the following two conditions: (1) This device may not cause harmful interference, and (2) this device must accept any interference received, including interference that may cause undesired operation. The manufacturer is responsible for ensuring that this device complies with the applicable FCC Rules and Regulations. The method of testing used was according to the radio frequency measurement standards provided, and that all necessary steps have been taken to ensure that all production units of the same equipment will continue to comply with the Federal Communications Commission's requirements.

Shenzhen LC01 Compliance Testing Laboratory Ltd.
27, Longgang Industrial Park, Longgang Road, East or West, Bao'an District, Shenzhen, Guangdong, China
Tel: 86(755) 43391132 Fax: 86(755) 43391133
http://www.LC01.com Email: admin@lc01.com

VERIFICATION OF CONFORMITY

Verification of Conformity
Reference No. LC0134008719

Responsible Party: Shenzhen Ruckun Technology Development Co., LTD.
Address: 27 No.44 West Longgang Road, Longhua New District, Shenzhen, China
Product: Media DVR
Model No.: RCM-MD21A, RCM-MD21B, RCM-MD21C, RCM-MD21D, RCM-MD21E, RCM-MD21F, RCM-MD21G, RCM-MD21H, RCM-MD21I, RCM-MD21J, RCM-MD21K, RCM-MD21L, RCM-MD21M, RCM-MD21N, RCM-MD21O, RCM-MD21P, RCM-MD21Q, RCM-MD21R, RCM-MD21S, RCM-MD21T, RCM-MD21U, RCM-MD21V, RCM-MD21W, RCM-MD21X, RCM-MD21Y, RCM-MD21Z

Trade Mark: Ruckun
Standard: FCC CFR 47 PART 15 Subpart B, 2011, ANSI C63.4-2008

Important note:
This device is in compliance with Part 15 of the FCC Rules and Regulations for radio frequency devices. Operation of the product is subject to the following two conditions: (1) This device may not cause harmful interference, and (2) this device must accept any interference received, including interference that may cause undesired operation. The manufacturer is responsible for ensuring that this device complies with the applicable FCC Rules and Regulations. The method of testing used was according to the radio frequency measurement standards provided, and that all necessary steps have been taken to ensure that all production units of the same equipment will continue to comply with the Federal Communications Commission's requirements.

Shenzhen LC01 Compliance Testing Laboratory Ltd.
27, Longgang Industrial Park, Longgang Road, East or West, Bao'an District, Shenzhen, Guangdong, China
Tel: 86(755) 43391132 Fax: 86(755) 43391133
http://www.LC01.com Email: admin@lc01.com

CERTIFICATE OF CONFORMITY
Reference No. LC0134008719

Applicant: Shenzhen Ruckun Technology Development Co., LTD.
Address: 27 No.44 West Longgang Road, Longhua New District, Shenzhen, China
Product: Media DVR
Model No.: RCM-MD21A, RCM-MD21B, RCM-MD21C, RCM-MD21D, RCM-MD21E, RCM-MD21F, RCM-MD21G, RCM-MD21H, RCM-MD21I, RCM-MD21J, RCM-MD21K, RCM-MD21L, RCM-MD21M, RCM-MD21N, RCM-MD21O, RCM-MD21P, RCM-MD21Q, RCM-MD21R, RCM-MD21S, RCM-MD21T, RCM-MD21U, RCM-MD21V, RCM-MD21W, RCM-MD21X, RCM-MD21Y, RCM-MD21Z

Trade Mark: Ruckun
Standard: FCC CFR 47 PART 15 Subpart B, 2011, ANSI C63.4-2008

Important note:
This device is in compliance with Part 15 of the FCC Rules and Regulations for radio frequency devices. Operation of the product is subject to the following two conditions: (1) This device may not cause harmful interference, and (2) this device must accept any interference received, including interference that may cause undesired operation. The manufacturer is responsible for ensuring that this device complies with the applicable FCC Rules and Regulations. The method of testing used was according to the radio frequency measurement standards provided, and that all necessary steps have been taken to ensure that all production units of the same equipment will continue to comply with the Federal Communications Commission's requirements.

Shenzhen LC01 Compliance Testing Laboratory Ltd.
27, Longgang Industrial Park, Longgang Road, East or West, Bao'an District, Shenzhen, Guangdong, China
Tel: 86(755) 43391132 Fax: 86(755) 43391133
http://www.LC01.com Email: admin@lc01.com

CERTIFICATE OF CONFORMITY

CERTIFICATE of Conformity
Reference No. LC0134008719

Applicant: Shenzhen Ruckun Technology Development Co., LTD.
Address: 27 No.44 West Longgang Road, Longhua New District, Shenzhen, China
Product: Camera
Model No.: RCM-PC21A, RCM-PC21B, RCM-LPC21A, RCM-LPC21B, RCM-AP21A, RCM-AP21B, RCM-SD, RCM-AE, RCM-SL, RCM-SM, RCM-SH, RCM-SK, RCM-SL, RCM-SM, RCM-SH, RCM-SK, RCM-SD21A, RCM-SD21B, RCM-SD21C, RCM-SD21D

Trade Mark: Ruckun
Standard: EMC Directive 2014/53/EU

Important note:
This device is in compliance with the EMC Directive 2014/53/EU. The manufacturer is responsible for ensuring that this device complies with the applicable EMC Directive 2014/53/EU. The method of testing used was according to the EMC Directive 2014/53/EU. The CE marking is shown below and is affixed to the product after preparation of necessary technical documentation.

Shenzhen LC01 Compliance Testing Laboratory Ltd.
27, Longgang Industrial Park, Longgang Road, East or West, Bao'an District, Shenzhen, Guangdong, China
Tel: 86(755) 43391132 Fax: 86(755) 43391133
http://www.LC01.com Email: admin@lc01.com

CERTIFICATE OF CONFORMITY

CERTIFICATE of Conformity
Reference No. LC0134008719

Applicant: Shenzhen Ruckun Technology Development Co., LTD.
Address: 27 No.44 West Longgang Road, Longhua New District, Shenzhen, China
Product: Camera
Model No.: RCM-PC21A, RCM-PC21B, RCM-LPC21A, RCM-LPC21B, RCM-AP21A, RCM-AP21B, RCM-SD, RCM-AE, RCM-SL, RCM-SM, RCM-SH, RCM-SK, RCM-SL, RCM-SM, RCM-SH, RCM-SK, RCM-SD21A, RCM-SD21B, RCM-SD21C, RCM-SD21D

Trade Mark: Ruckun
Standard: RoHS

Important note:
This device is in compliance with the RoHS Directive 2002/95/EC. The manufacturer is responsible for ensuring that this device complies with the applicable RoHS Directive 2002/95/EC. The method of testing used was according to the RoHS Directive 2002/95/EC. The RoHS marking is shown below and is affixed to the product after preparation of necessary technical documentation.

Shenzhen LC01 Compliance Testing Laboratory Ltd.
27, Longgang Industrial Park, Longgang Road, East or West, Bao'an District, Shenzhen, Guangdong, China
Tel: 86(755) 43391132 Fax: 86(755) 43391133
http://www.LC01.com Email: admin@lc01.com

CERTIFICATE OF CONFORMITY

CERTIFICATE of Conformity
Reference No. LC0134008719

Applicant: Shenzhen Ruckun Technology Development Co., LTD.
Address: 27 No.44 West Longgang Road, Longhua New District, Shenzhen, China
Product: Media DVR
Model No.: RCM-MD21A, RCM-MD21B, RCM-MD21C, RCM-MD21D, RCM-MD21E, RCM-MD21F, RCM-MD21G, RCM-MD21H, RCM-MD21I, RCM-MD21J, RCM-MD21K, RCM-MD21L, RCM-MD21M, RCM-MD21N, RCM-MD21O, RCM-MD21P, RCM-MD21Q, RCM-MD21R, RCM-MD21S, RCM-MD21T, RCM-MD21U, RCM-MD21V, RCM-MD21W, RCM-MD21X, RCM-MD21Y, RCM-MD21Z

Trade Mark: Ruckun
Standard: RoHS

Important note:
This device is in compliance with the RoHS Directive 2002/95/EC. The manufacturer is responsible for ensuring that this device complies with the applicable RoHS Directive 2002/95/EC. The method of testing used was according to the RoHS Directive 2002/95/EC. The RoHS marking is shown below and is affixed to the product after preparation of necessary technical documentation.

Shenzhen LC01 Compliance Testing Laboratory Ltd.
27, Longgang Industrial Park, Longgang Road, East or West, Bao'an District, Shenzhen, Guangdong, China
Tel: 86(755) 43391132 Fax: 86(755) 43391133
http://www.LC01.com Email: admin@lc01.com



SD Mobile DVR with 3G GPS



SD Mobile DVR with WIFI 3G GPS G-Sensor



0000: t/t000000000000000000000000

Quantity: 500000 units

Lead time: 12 weeks

Logistics: DHL, UPS, EMS, TNT

Product images:



Richmor Brand Package



Standard Package

Product specifications:

1. Product name: Mobile Digital Video Recorder
2. Model: DVR-1080P
3. Color: Black
4. Resolution: 1080P
5. Storage capacity: 32GB

Notes: All products must be packed in standard export cartons.

Additional information:



Richmor

OEM & ODM Service

Brasil World Cup Supplier



Inner Training after study from Alibaba in July



Technical Training For Fast Response to Customer Richmor 锐驰曼



lecturer for Execution