

[4CH SD DVR 3G LAN DVR](#)





OS	Linux
OSD	OSD ID
GUI	GUI
4CH 720P AHD / SD / 1.0Vp-p 75Ω 2CH CVBS + VGA 1.0Vp-p 75Ω / 1CH 4CH 1 / 4 720P / D1 / HD1 / CIF MAX 4 / 4 / D1 0 / 0 PAL 100f / s / CCIR625 / 50 NTSC 120f / s / CCIR525 / 60 CIF 256Kbps / 1.5Mbps 8 HD1 600Kbps / 2.5Mbps 8 D1 800Kbps / 3Mbps 8 720P 4Mbps-6Mbps	4CH 720P AHD / SD / 1.0Vp-p 75Ω
	2CH CVBS + VGA 1.0Vp-p 75Ω / 1CH 4CH
	1 / 4
	720P / D1 / HD1 / CIF MAX 4 / 4 / D1
	0 / 0
	PAL 100f / s / CCIR625 / 50 NTSC 120f / s / CCIR525 / 60 CIF 256Kbps / 1.5Mbps 8 HD1 600Kbps / 2.5Mbps 8 D1 800Kbps / 3Mbps 8 720P 4Mbps-6Mbps

摄像机	通道	4CH
	接口	2CH 同轴 / 2CH BNC
	帧率	G.726 8KB / 帧
通道		7CH 1CH AD 通道
通道		2CH 同轴 / 2CH BNC
通道		3CH RS232 / POS / LED
		2CH 485 PTZ
		2CH CAN
网络		3G WCDMA / CDMA2000 / GPRS / EDGE; 4G TDD-LTE / FDD-LTE
GPS		GPS / BD
	HDD	2.5 2TB HDD
存储	SD	128GB SD
	接口	USB / SD Updatin / OTA
	编码	H.264
	文件系统	FAT32
	USB	USB / U
通道	通道	通道 / 通道
	帧率	4CH 同轴 / 帧 / 帧 / 帧
	分辨率	x2 / x4 / x8 / x16
通道		通道 / 2 通道
通道	接口	接口
	接口	LED / POS / OBD ect.external
电 & 环	电压	Voltage.Support Timed / Delay off
	电压	DC + 6V + 36V
	功率	<5W
	温度	-20°C + 70°C
尺寸	尺寸	20 80
	尺寸	200D × 187W × 62H mm
重量		1.90kg

9. 2CAN

10. HDD

11. GPS / BD / G

12. 3G / 4G

13. WIFI

14. / / ; / / POS / LED

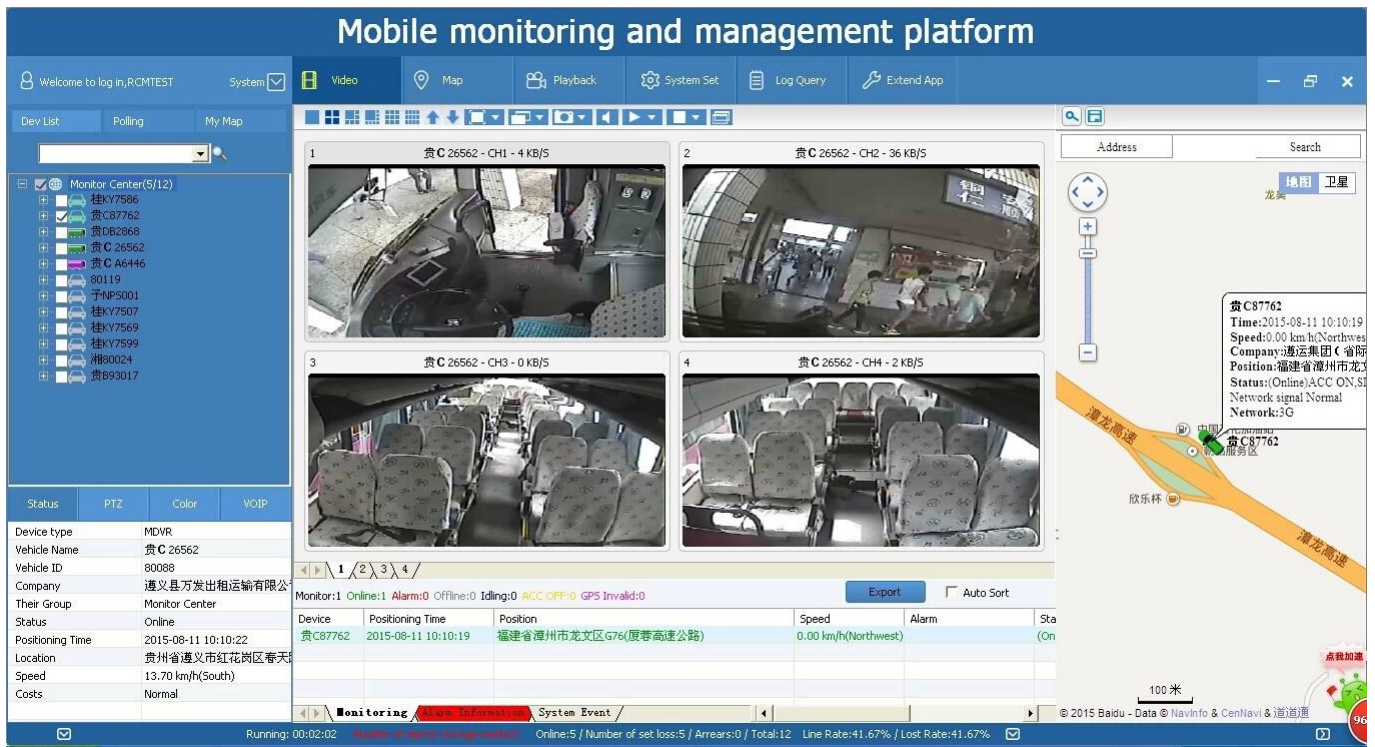
15. SMS /

16. OTA On-The-Air 17.

18. IOS / Android

GPS PC

Android / IOS APP





□□

Vehicle Management System Welcome! 销售客户 | Manager | Exit

Report	Device	User
Report		
Quick Report		
Mileage Summary		
Mileage Daily		
Track Detail		
Speed Report		
Online Summary		
IO Alarm Report		
Alarm Report		
Storage Report		
Upgrade Report		
Fuel Report		
Park Report		
Geo Fencing Report		
3G Flow Report		
Extend Report		
Dispatch Report		

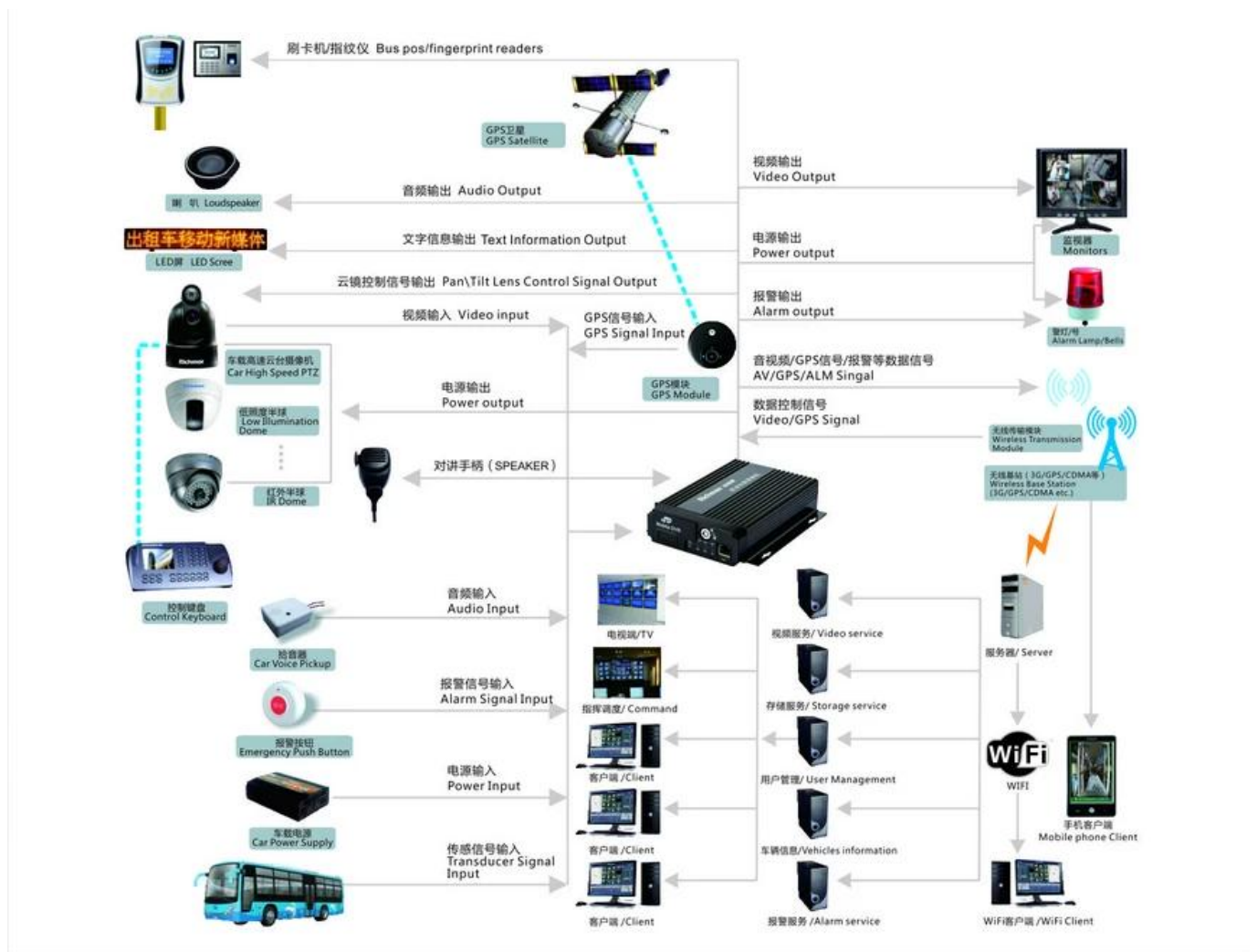
Mileage Summary

Begin Time: 2016-01-08 00:00:00 To: 2016-01-08 16:27:09

Device: All Devices Select Device Query Export To Excel Export To Csv Export To Pdf

Index	Vehicle	Total Mileage (KM)	Begin Time	Start Mileage (KM)	Start Position	End Time	End Mileage (KM)
1	粤EX3114	174.88	2016-01-08 09:03:32	22.95	22.534264, 114.006444	2016-01-08 16:25:41	157.83
2	粤EX3130	202.07	2016-01-08 07:33:17	18.1	22.884299, 112.892602	2016-01-08 16:25:28	171.57
3	24012	277.42	2016-01-08 07:09:55	23.41	23.369562, 116.675227	2016-01-08 14:57:24	300.83
4	冀A76248	97.4	2016-01-08 00:00:25	299.97	41.572469, 118.786245	2016-01-08 09:42:39	41.09
5	24023	0	2016-01-08 00:00:07	16.26	37.758759, 120.731127	2016-01-08 16:19:07	16.26
6	鲁QW5387	416.36	2016-01-08 06:09:54	96.66	35.461432, 117.643793	2016-01-08 16:20:11	92.83
7	鲁J81712	120.98	2016-01-08 04:48:40	26.51	35.876478, 117.681941	2016-01-08 14:25:07	144.92
8	粤H65250	45.81	2016-01-08 00:00:03	139.13	22.654394, 112.498593	2016-01-08 16:15:15	115.82
9	粤H65153	40.61	2016-01-08 00:00:27	92	22.854197, 112.497665	2016-01-08 16:11:28	73.72
10	粤H65368	111.72	2016-01-08 00:00:15	145.61	22.654321, 112.498645	2016-01-08 16:24:48	93.9
11	粤H65010	52.02	2016-01-08 00:00:10	93.24	22.854234, 112.497795	2016-01-08 16:15:55	57.92
12	鲁AA3683	855.08	2016-01-08 00:00:29	354.36	35.950843, 117.659700	2016-01-08 16:24:44	1009.74
13	24058	224.42	2016-01-08 07:00:58	44.57	37.949788, 118.844070	2016-01-08 16:17:34	60.4
14	28999	2.36	2016-01-08 13:13:09	17.6	28.734420, 121.235847	2016-01-08 13:57:27	19.81
15	01568	369.29	2016-01-08 00:00:54	51.04	33.733305, 115.868921	2016-01-08 16:03:58	420.33

出租车移动多媒体DVR



XXXXXXXXXX

Product Introduction



7104/7204
720P/1080P
Series-AHD
4CH (Top Sale)



7105 Series-
AHD 5CH



9108 Series-
8ch NVR
/9204 Series-
4ch NVR



8114 Series-
AHD 4CH



7008 Series-
D1/720P 8CH

HDD Mobile DVR Series

Product Introduction



210 Series-
AHD 4CH
(Top Sale)



210 Series

Product Introduction



**PTZ
HD Camera
Series**



**Car Camera
Series**

Vehicle Camera

pls Amily



overseasales-2@rcmctv.com

Skype rcmcctvsales2

QQ

2355778097

MB / whatsapp +86 18929314790