

Product Description

User Manual for Mobile Network Video Recorder(MNVR) Model : RCM-MDR9000

1. Real time HD video record, **1080p/720p/D1/HD1/CIF** optional, video quality adjustable, support 4ch 1080p or 8ch 720p video record, 2ch video output.
2. Professional vehicle voltage design, support 8-36v wide voltage input; transient voltage can be 6-70v, over-load/over-voltage/short circuit/reverse protection for kinds of vehicle;
3. **ACC delay** (max support 24 hours delay);
4. Support 1CH CAN, OBD;
5. Support **PTZ control**/pos/fuel sensor, led advertisement;
6. Support **SD card** upgrading/**OTA** upgrading
7. Support **wireless** AP hotspot;
8. Support local picture capture when alarm trigger;
9. 2CH alarm output, support audible&visual alarm, oil/power cut off;
10. 8CH alarm input (door open/close; lighting; turning; braking; reversing etc), multi-alarm linkage;
11. Support manual , overspeed /low speed, parking, motion detection, cross the border, route deviation fatigue
12. driving, dangerous driving and lane departure, detection alarm;
13. Support remote video/audio monitor, talk back function, remote PTZ control;
14. Support **IE web configuration**, support MSG/software configuration/Software get configuration;
15. Auto record/timing record /alarm record working mode option, for different request; display&record vehicle driving status/plate no; driving route, speed information for easily management;
16. Special file predistribution function, solve the file fragmentation of disk re-writing;
17. **Watch dog function**, protect device and video lost from device reboot;
18. HDD+SD card record (support **2.5"1TB HDD** and **128GB SD card**) shockproof design protect data lost from shock&dust;
19. DC12v voltage output, can offer power for cameras and some other accessories;
20. HIS solution, **H.264** video compression with multi-stream record;
21. Size: 190mm(D)*188mm(W)*67mm(H)

Product Features:

- ◆ HIS Solution,H.264 Compression, Multiple stream recording, support 4CH 1080P AHD Mega pixels camera input;
- ◆ High quality real time recording,1080P/ 720P/CIF/HD1/D1 Optional, quality adjustable;
- ◆ Professional Car Power Design,8-36V wide voltage,Provide reverse voltage/overload/short circuit protection, to meet kinds of car application;
- ◆ Support 12VDC output voltage,power supply for Camera/Screen etc;
- ◆ HDD+SD CARD record (support 2.5" HDD + max 128GB SD Card),protect NVR from shock & Dust damage;
- ◆ Watchdog abnormal restart function,protect SD Card and Record;
- ◆ Exclusive pre-allocate DVR Special File System Technology,Solving repeatedly wipe cause file fragmentation, and ensure the integrity of the data.
- ◆ ACC Delay off,can set 24 hours;
- ◆ Unique UPS Technology ensures the integrality of record when power failure occurs,even can for 10-15s.
- ◆ Auto Record/Manual Record/Alarm Record etc working mode to meet different requirements;
- ◆ Show Car status/Plate/Driving Route/Low Speed/Over Speed information for convenient management;
- ◆ Support GPS/BD,3G/4G Module Optional,WIFI extend;
- ◆ Strong Network,phone device configure ,Support SMS Get device information and configure;
- ◆ Support Video&Audio Monitoring,Intercom, PTZ, Alarm,Over speed,Geo Fence etc through remote control platform;
- ◆ 7CH Alarm input(Door Open,Light,Turn direction,brake,reverse etc),can linkage kinds of alarm;
- ◆ 2CH alarm output, Support the linkage acousto-optic alarm, cut off fuel oil/power,etc .
- ◆ 1CH CAN port, get the information of car.
- ◆ High level aviation interface,easily installation and better shockproof, more stable;
- ◆ Easily Smart GUI Interface, saving time in device setting;
- ◆ Strong Stable Application,Support Real-time monitor, talk-back,playback,record,picture snap etc;
- ◆ Updated through SD or OTA Remote Automatic updating,more stable and convenient;
- ◆ Support Phone Remote Monitor, 3G Phone Calling etc;
- ◆ Support PTZ/POS/Oil Sensor/LED Advertisement Panel etc;
- ◆ Support Ministry of Transport Standard Agreement
- ◆ Be Customized according your request;

Main Functions

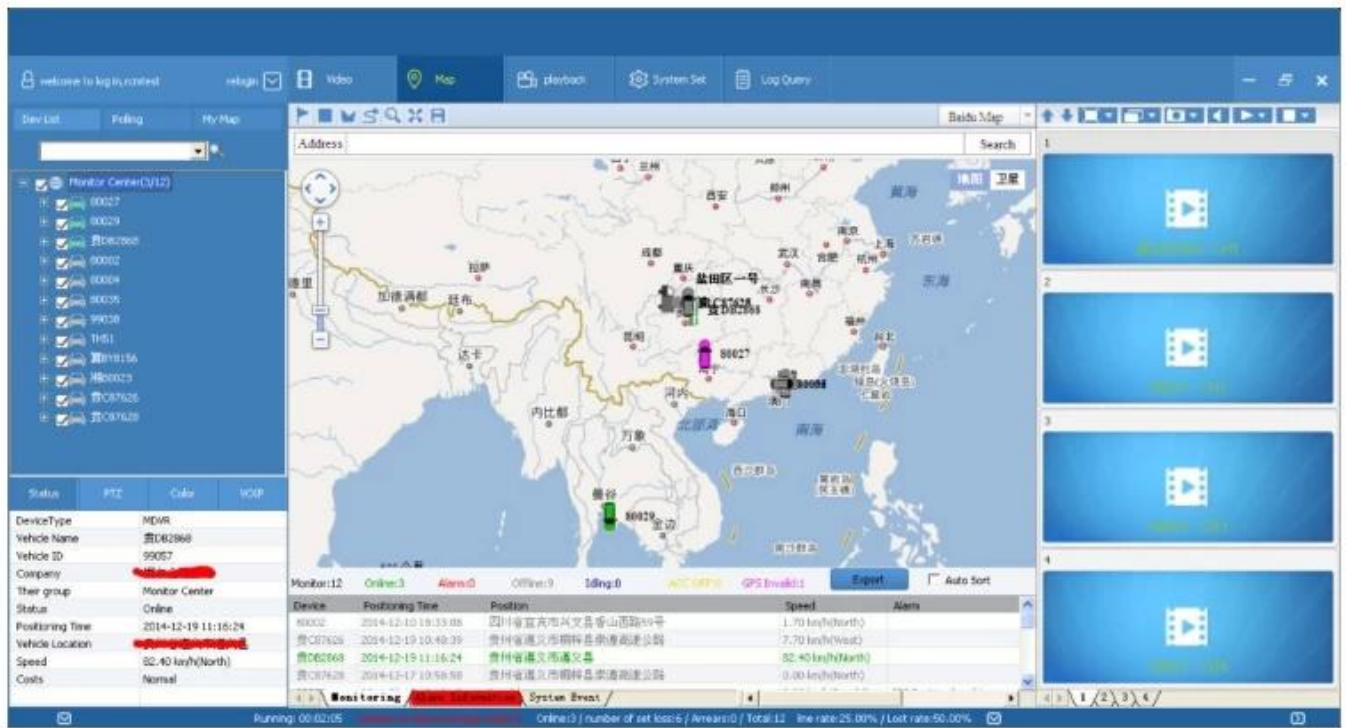
Item		Parameter
OS		Linux
Language		Chinese/English/Others (can be customized)
Video Compression		H.264 Compression Mode
OSD		Overlays information such as date time and vehicle ID
GUI	Graphical User Interface	Can connect to external LED screen. Setup system parameters with the remote control.
Video RecordSystem	Video Input	4CH 1080p input ,aviation connector.
	Video Output	1CH CVBS+ VGA output for optional, 1.0Vp-p, 75Ω
	Preview	Support 1 channel and 4 channels preview,Support Manual/Alarm Trigger full screen preview
	Resolution	1080p/720p/D1/HD1/CIF, MAX:4 channels 1080p
	Video Quality	0-7 levels, 0 is the highest level, 7 is the lowest level.
	Video Standard	CIF: 256Kbps ~ 1.5Mbps, multi levels video quality optional HD1: 600Kbps ~ 2.5Mbps, multi levels video quality optional D1: 800Kbps ~ 3Mbps, multi levels video quality optional 720P:4Mbps-6Mbps, multi levels video quality optional 1080P:4Mbps-8Mbps, multi levels video quality optional
	Record Mode	The default setting is auto recording after power on. Timed recording, alarm trigger recording and manual recording are supported.
Audio	Audio Input	4CH
	Audio Output	1CH
	Compression	G.711 compression, 8KB/s speed
Alarm Input		8CH IO Alarm Input; Support alarm linkage function
Alarm Output		2CH power on/off Alarm Output, Support the linkage acousto-optic alarm, cut off fuel oil/power,etc
Communication Interface		2CH RS232, support extension device, such as POS machine, Oil Feul sensor, LED advertising screen , etc.
		2CH 485 interface, can connect PTZ,etc.
		1CH CAN interface.
Wireless transfer		Support Built-in 3G/4G network, WCDMA,CDMA2000,TDD-LTE,FDD-LTE... TD-SCDMA Compatible with GPRS,EDGE
Position		Support Built GPS/BD Module,can make playback analysis of vehicle routing
G-Sensor		Support G-sensor

Video Storage	Storage	2.5" HDD+ SD Card,each max 2TB HDD + 128GB SD Card mirror recording to protect data from loss
	Upgrade	Support USB flash disk updating,SD card upgrade , OTA remote upgrade automatically
	File Format	.264 General video format
	File System	Professional MNVR File System
	USB	Front panel supports USB port, support USB flash disk upgrade to backup; hard disk box USB port, can back up video data
Video Playback	Video Search	Search video by Record Time/Record Type etc
	Playback	Max support 4CH Replay /Stop/Fast Forward/Fast Reverse at same time
		Support x 2,x4,x8,x16. fast forward or fast backward play
Safety Management		User/Admin 2 Levels Different Passwords , support screen lock
Voltage & Power Consumption	Power Management	Adaptive wide power input, support Wide Voltage, Over-load、 Over-voltage、 Short Circuit、 Reverse Protection..Support Time Setting/Delay power off
	Voltage Input	DC:+8V ~ +36V
	Voltage Output	+12V@2.5A , +5V@2.5A
	Power-off Protection	UPS Technology,All video information can be saved automatically when the power is cut off, and make sure that all the files can not be damaged.
	Power Consumption	Normal Working <5W
Working Environment	Temperature	-20℃ to +70℃
	Humidity	20% to 80%
others	Size	187 (D) * 188 (W) * 67 (H) mm
	Net Weight	1.8kg

RMSV6 INTERFACE

Easily Smart GUI Interface, saving time in device setting.





Customer Feedback



David from USA.

This supplier has good softwares ability and can meet my needs. The sample works very good. I am hoping to order more.

Tony from Russia.

The cooperation is satisfied. The products are good. Very strong housing case. My clients like a lot.



Jose from Columbia.

We made correct decision in choosing this supplier. We are now having much better management and control on our vehicles. The ticket cash are more each day.





Shanghai LIT Composite Testing Laboratory Ltd.
11, Jingyuan Industrial Park, Jingyuan Road, Siping Road, Nantong District, Shanghai
200000, China
Tel: 021-61411111 Fax: 021-61411111
http://www.lit.com.cn Email: shanghai@lit.com.cn

Shanghai LCB Composite Testing Laboratory Ltd.
17, Kangqiang Industrial Park, Songpu Road, Songpu West, Baoshan District, Shanghai
Guangdong, China
Tel: (86) 21-60991120 Fax: (86) 21-60991122
http://www.lcb-test.com Email: sales@lcb-test.com

Shenzhen L2D Technology Trading Co., Ltd.
 37, Shengyuan Industrial Park, Pingliang Road, Nanshan District, Shenzhen
 Guangdong, China
 Tel: 86-755-83281128 Fax: 86-755-83281128
 Web: <http://www.l2d.com.cn> Email: sales@l2d.com.cn

Shanghai CCB Commerce Trading Corporation Ltd
27, Anguosh Industrial Park, Tongpu Road, Baocun Road, Songer District, Shanghai
200900, China
Tel: 86(21)54208110 Fax: 86(21)54208110
http://www.ccb-trading.com E-mail: shanghai@ccb-trading.com

Shenzhen CTS Composite Technology Co., Ltd.
17, Jingguang Industrial Park, Jingguang Road, Xixiang Street, Xixiang District, Shenzhen
Guangdong, China
Tel: 86(755)4329-1122 Fax: 86(755)4329-1122
E-mail: cts@cts.com.cn www.cts.com.cn

Shawline Ltd. (Singapore) Pte. Ltd.
17, Singapore Airport Park, Tropic Road, Singapore West, Singapore 128059, Singapore
Tel: 65-736 8788 Fax: 65-736 8787
http://www.sls.com.sg Email: enquiry@sls.com.sg

FAQ

Q:Are you factory manufacturer or trade company?

We are factory manufacturer,we have our own factory and technology/skill support,we have engineers to support/take charge of R&D ,resolve problems product.

Q: Does the MDVR support Hard drive and SD card?

Yes, HDD version MDVR supports SSD, HDD, and SD card. SD card version MDVR supports max 2 SD card.The storage capacity can be from 32GB to 2TB.

Q: Is it difficult to install MDVR into the vehicle?

Actually it is easy to install it into vehicle. Most driver can figure out how to connect the power cables.And the camera installation is more easy. Just screw, connect and mount on the target place inside the vehicle.

Q: If I need door open and close alarm, overspeed alarm, reverse video, brake video, left-turn video, right-turn video, etc,is it available?

Definitely yes!The I/O RS232 and 485 extension port is for all expanded purposes, including the functions above.In fact, there are more customized functions which can be connect through this port, such as Fuel sensor, Counter system,PTZ camera, and so on.

Q: We have our own platform and server, can we use your MDVR? Do you have SDK or can you do customized platform for us?

Yes, we have SDK ready and welcome your OEM customized order!

Q: We have our own platform and server, can we use your MDVR? Do you have SDK or can you do customized platform for us?

Yes, we have SDK ready and welcome your OEM customized order!

Q: Does the MDVR come with accessory, such as HDD, SD card, Microphone, Camera, Extension cable etc?

We have all accessories ready. You can ask us to make the complete quote for one whole set. Normally the MDVR doesn't include any accessory. Therefore it is advisable to inform us about your target accessory. All are can done right here. One-stop-serve purchasing.

Q: Can I get a sample to test before formal order?

Yes, you can. We can provide sample with 1 month test period. It will demand some deposit and the delivery (both send and resend) cost is supposed to be on your own side. If the deliver cost is not so high, we recommend this way. If not, then we do not recommend you do this. Do not forget the import tax as well.

Q: How many camera in one set? Can I use my own accessory?

A: The accessory depends on you. The normal quotation is based on MDVR only. The accessory would not be quoted until you ask for them. And it is OK to use your own accessory. It is compatible.

Q: What can I do if the MDVR fails to work?

A: You can send it back to us. Remember that we provide 12 months quality warranty under normal use. If you send it back, we will inspect the MDVR in details and repair it for you. However we seldom have returned defective MDVR. The quality is rather good!



Welcome to contact **Sylvia** for more details

By Skype: [rcmcctvsales4](#)

By Trade manager: [cn1001765398](#)

By We chat: [Jobslovers](#)

By What's app: [+86 18126263832](#)

By E-mail: overseasales-4@rcmcctv.com

Easily Smart WIN8 Interface, saving time in device setting.

