

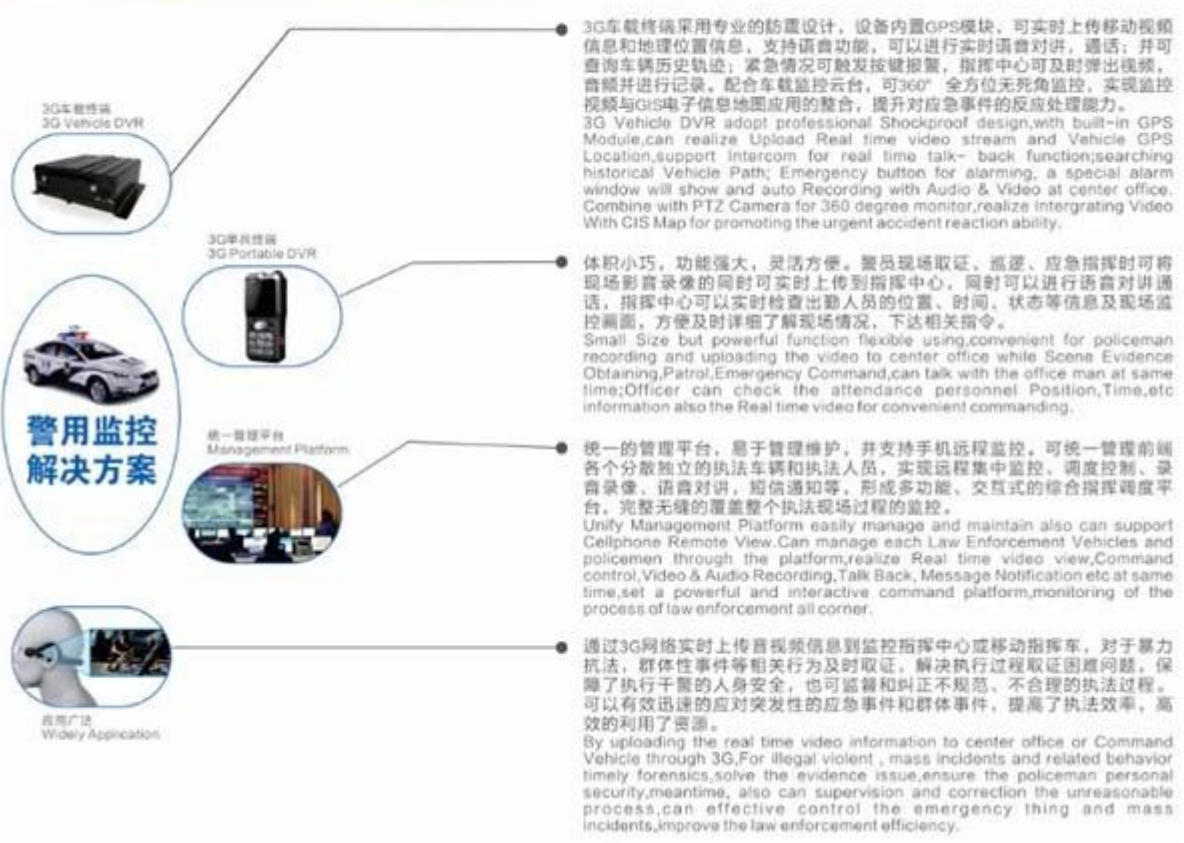
车载 dvr gps 摄像头 4ch 3g 4g mdvr 3g sim 硬盘 车载 dvr

(rcm-mdr 7104 摄像头)

远程 摄像头 3g 4g 摄像头 dvr 摄像头摄像头摄像头



功能特点 Features



remote 3g 4g gps wifi hdd dvr

1. h.264 4ch 720p ahd 2ch hd + 2ch sd
2. dvr system, sd, sd
3. 8-36v
4. hdd + sd (2tb 2.5 ' ' 128 sd)
5. gps/bd/g
- 6.



remote 3g 4g gps wifi hdd dvr

**Richmor**

 **Factory Audit**

**SMS Device configure**  
**OTA Remote Updating**  
**AHD 720P/960P**  
**2TB HDD+128GB SD Card**

**NEW**



**CE**

**FC**



remote     3g 4g gps wifi hdd     dvr

**Richmor**

**Factory Audit**

**SMS Device configure**  
**OTA Remote Updating**  
**AHD 720P/960P**  
**2TB HDD+128GB SD Card**

**NEW**



CE    FCC    ROHS



romote 3g 4g gps wifi hdd dvr

**Front LED Indicators**



romote 3g 4g gps wifi hdd dvr

## Back Panel IO Indicators



## Richmor GUI

The main menu includes: Search, System setup, Rec setup, Network setup, Alarm setup, Peripheral setup, System Tools, System Information, as below:



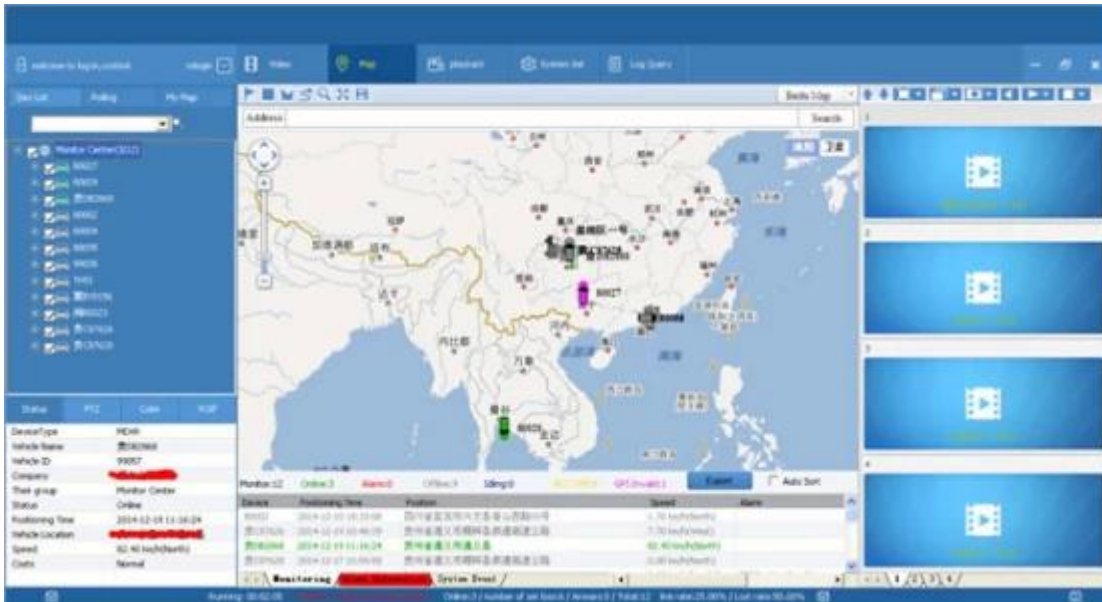
## rcm-MDR7104



os	linux	
osd	osd id	
gui	gui	
video	video	4ch 720p ahd /sd / 1.0 vp-p 75w
	video	2ch cvbs + vga ( ) 1.0 vp-p 75w 1ch 4ch
	video	1 4 , /
	video	720p/d1/hd1/cif : 4 720p 4 d1
	video	0-7 0
	video	: 100f/ CCIR625 50field; ntsc: 120f/s CCIR525 60field; cif: 256kbps ~ 1.5 mbps 8 ; hd1: 600kbps ~ 2.5 mbps 8 ; d1: 800kbps ~ 3mbps 8 ; 720p: 4mbps-6mbps
	video	; ; ;
audio	audio	4ch
	audio	2ch bnc
	audio	g. 726 8kb/
io	7ch 1ch ;	
io	2ch / /	
io	io	3ch rs232 pos/ / led
	io	2ch 485 ptz
	io	2ch
io	3g wcdma cdma2000 gprs; 4g tdd-lte fdd-lte	
gps	gps/bd	
hdd	2.5 "2tb hdd	

存储器	sd 容量	≥128MB 支持 sd 扩展
	更新	支持 usb 更新 sd 固件 Updatin ota 更新
	分辨率	h.264
	文件系统	支持 fat32 文件系统
接口	usb	支持 usb 接口 支持 u 盘
	音频	支持 4 ch 音频/Stop/Fast/Slow 控制
显示	分辨率	支持 2x4x8x16 分辨率
	帧率	支持 2 帧/秒
其他	接口	支持 led 接口
	位置	支持 pos 接口 obd 接口. 支持
电源	电压	支持 dc: + 6v-+ 36v
	功率	功率 < 5w
	温度	-20 °C-+ 70 °C
	湿度	20%-80%
尺寸	长度	200 (d) * 187 (h) * 62 (w) mm
	重量	1.90 kg

摄像头 (pc 接口 CMSV6)



□□□□ CMSV6 □

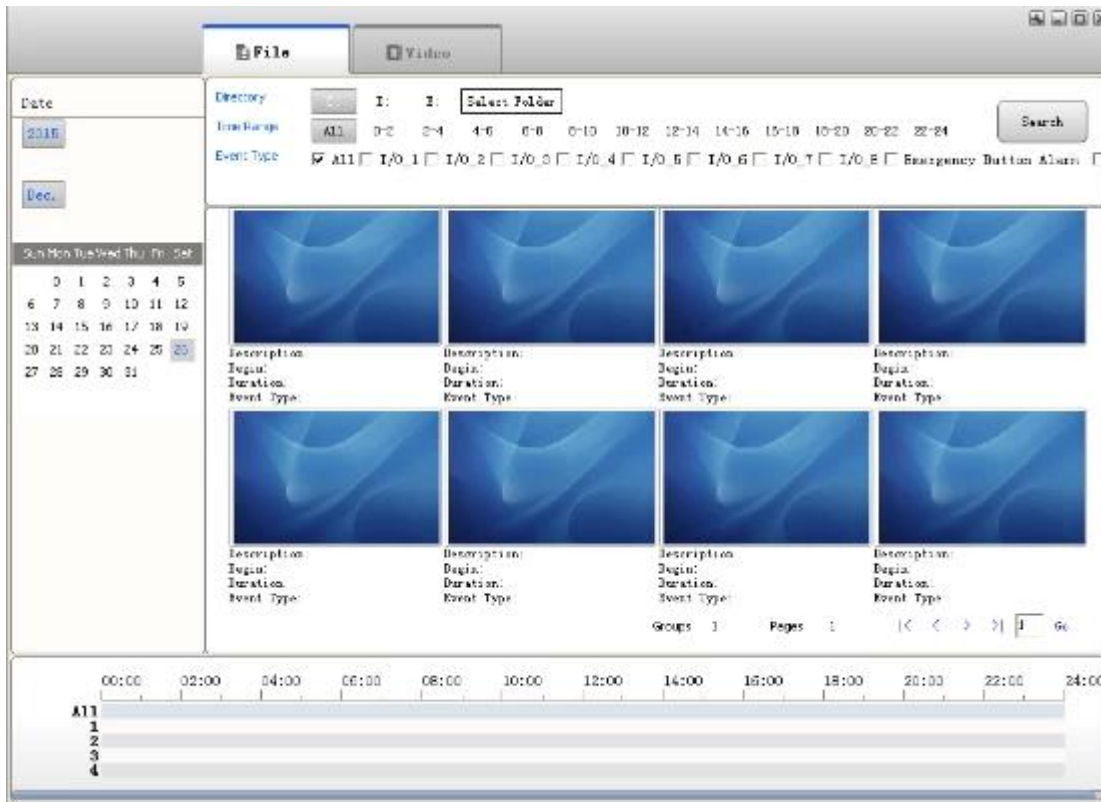
□□□□□□□□□□□□

□□□□□□□□□□□□□□-□□□□ iphone□□□□□□□□□□□□□□□□



□□□□□□□□□□□□





Richmor  dvr

Vehicle Management System National WEBP | Manager | Exit

**Report** Device User

### Mileage Summary

Begin Time: 2016-01-08 00:00:00 To: 2016-01-08 16:27:09

Device: All Devices

Index	Vehicle	Total Mileage (KM)	Begin Time	Start Mileage (KM)	Start Position	End Time	End Mileage (KM)
1	鄂E3314	174.88	2016-01-08 09:03:32	22.95	22 574254,114.038444	2016-01-08 16:25:41	357.63
2	鄂E3330	202.87	2016-01-08 07:35:17	18.1	22 604256,112.002012	2016-01-08 16:25:28	371.57
3	24012	277.42	2016-01-08 07:09:55	23.41	22 359982,116.675227	2016-01-08 14:57:24	300.63
4	鄂A75248	97.4	2016-01-08 00:00:25	296.87	41 572469,118.708243	2016-01-08 08:42:39	41.09
5	24023	0	2016-01-08 00:00:07	36.26	37 758759,120.734127	2016-01-08 16:19:07	16.28
6	鄂H5397	418.26	2016-01-08 06:09:54	36.86	35 461432,117.843700	2016-01-08 16:20:11	92.83
7	鄂J71112	123.98	2016-01-08 14:46:40	26.51	35 675478,117.663341	2016-01-08 14:25:37	144.92
8	鄂H5250	45.81	2016-01-08 00:00:03	136.13	22 654254,112.695570	2016-01-08 16:15:15	115.62
9	鄂H5353	43.81	2016-01-08 00:00:27	92	22 654197,112.497683	2016-01-08 16:11:28	73.12
10	鄂H5368	111.72	2016-01-08 00:00:15	145.61	22 654223,112.498945	2016-01-08 16:24:40	93.9
11	鄂H5510	52.02	2016-01-08 00:00:10	83.24	22 654234,112.497789	2016-01-08 16:15:55	57.92
12	鄂A8883	655.08	2016-01-08 00:00:29	354.26	35 850443,117.053700	2016-01-08 16:24:44	1089.74
13	24058	224.42	2016-01-08 07:00:58	44.57	37 449768,118.944070	2016-01-08 16:17:34	80.4
14	28999	2.28	2016-01-08 13:13:09	17.6	38 734423,121.236017	2016-01-08 13:57:27	18.61
15	81988	368.29	2016-01-08 00:00:54	51.94	31 733005,115.866021	2016-01-08 16:03:58	420.33

Richmor



Travelling Bus



Public Bus



Dangerous chemical car



Tobacco Logistics



Taxi



Truck



School Bus



Express Logistics



Road Police Car



Border Car



Traffic Inspection Car



Civil Work Vehicle



Escort Vehicle



Ambulance



Fixed place monitor



Ship Monitor





MoneyGram

PayPal

HSBC



□□□□

1. □□□□□ support □□□□□□□□□□□□□□□□□□□□□□□□□□□□□□□□

UR2.OEM/odm □□□□



### CUSTOMER SATISFACTION

- Excellent Aftersale service
- 12 months warranty
- 24 hours customer service
- We understand the importance of our customers

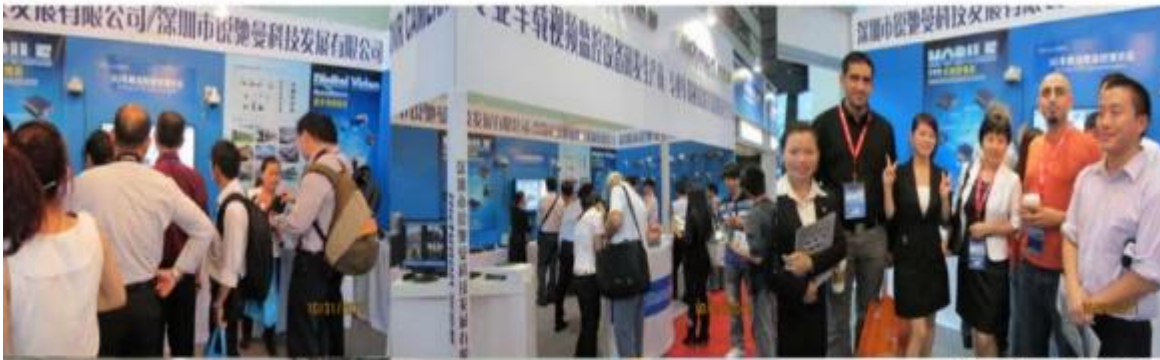
□□





**Richmor**

CPSE2012 in Shenzhen



CPSE2013

10.29-10.31

4 Booth we have

Welcome you !!!



CPSE2012-- Guangdong TV Report-Shenzhen Richmor



□□□□□□:





## EXCELLENT SUPPORT



□□□□□□□□





Richmor 锐驰曼

Richmor 锐驰曼

Richmor 锐驰曼

Richmor: [overseasales-7@rcmctv.com](mailto:overseasales-7@rcmctv.com) 微信号: [rcmctvsales7](#)