

Tarjeta SD + HDD 3G GPS DVR portátil para la escuela autobuses / camiones / Entrenador

(RCM-MDR8000)

DVR móvil'S Especificaciones:

1. Superhigh & nbsp; anti-shock, & nbsp; a prueba de agua, & nbsp; prueba de polvo & nbsp; funciones, fácil & nbsp; instalación
2. Soporte y & nbsp; doble & nbsp; datos & nbsp; backup & nbsp; (Muy & nbsp; Segura)
3. 6 Línea de alarma, Record giro a la izquierda, gire a la derecha y el freno
4. combustible Control de encendido / apagado a distancia
5. El exceso de carga, & nbsp; sobrecorriente, & nbsp; revertir, & nbsp; ESD, & nbsp; apagado & nbsp; protección
6. Automatic & nbsp; ON / OFF & nbsp; configuración, & Nbsp; se & nbsp; set & nbsp; muchos & nbsp; time & nbsp; períodos.
7. CE FCC Rosh Aprobación
8. puerto RJ45

DVR móvil's Fotos:



DVR móvilEs por paramter:

Artículo	Parámetro
A & amp; V & nbsp; de entrada	4 & nbsp; canal, & nbsp; la aviación & nbsp; conector
A & amp; V & nbsp; salida	1 & nbsp; canal, & nbsp; la aviación & nbsp; conector
Video & nbsp; compresión	H.264
Resolución	D1 / HD1 / CIF & nbsp; seleccionable
Video & nbsp; Frame & nbsp; tasa	100 & nbsp; fps & nbsp; (PAL), 120 fps (NTSC), 50fps (4 * D1)
Grabación	Fire & nbsp; grabación, & nbsp; time & nbsp; grabación, & nbsp; alarma & nbsp; grabación
Almacenamiento	SD & nbsp; Card & nbsp; y & nbsp; HDD & nbsp; Apoyo
Alarma	1 canal de & nbsp; alarma; & nbsp; alarma & nbsp; y & nbsp; grabación & nbsp; at & nbsp; & nbsp; misma & nbsp; tiempo
Salida & nbsp; Tensión	12V
reproducción	1-4 & nbsp; canal & nbsp; reproducción
Red	RJ45, & nbsp; Ethernet & nbsp; interfaz, Wired / Wireless & nbsp; redes,
PTZ & nbsp; de control	RS232
GPS	Apoyo, & nbsp; recodificación & nbsp; ruta, & nbsp; velocidad, & nbsp; posición & nbsp; de & nbsp; vehículo
G-SENSOR	Apoyo, & nbsp; grabación & nbsp; vehículo & nbsp; dirección & nbsp; Estado & nbsp; y & nbsp; alarma
Batería	Amplia & nbsp; Voltaje: & nbsp; 6V ~ 48V (70V & nbsp; instantánea & nbsp; tensión)
Potencia	2.4W
Sistema	Embedded & nbsp; de tiempo completo & nbsp; multitask & nbsp; control de & nbsp; sistema
Trabajo & nbsp; medio ambiente	Trabajo & nbsp; temperatura: & nbsp; 20C ° a & nbsp; 50C ° , Trabajo & nbsp; humedad: & nbsp; & lt; el 90%; almacenamiento & nbsp; & nbsp; temperatura: & nbsp; & nbsp; -30C & nbsp; a & nbsp; 70C, Storage & nbsp; Humedad & lt; el 90%
Dimensiones	193mm * 200mm * 53mm & nbsp; & nbsp; 1.5kg
Idioma	Chino, & nbsp; Inglés
Copia de seguridad	SD & nbsp; Cards & nbsp; y & nbsp; 3G & nbsp; Back & nbsp; Up
Wireless & nbsp; Transmisión	GPRS, EDGE, CDMA, WiFi, 3G & nbsp; (& nbsp; EVDO, WCDMA, CDMA2000 & nbsp;) & nbsp; opcional



AV Input Cables



AV Output Cable



Power Cable



IO Cables



3G Antenna



GPS Antenna

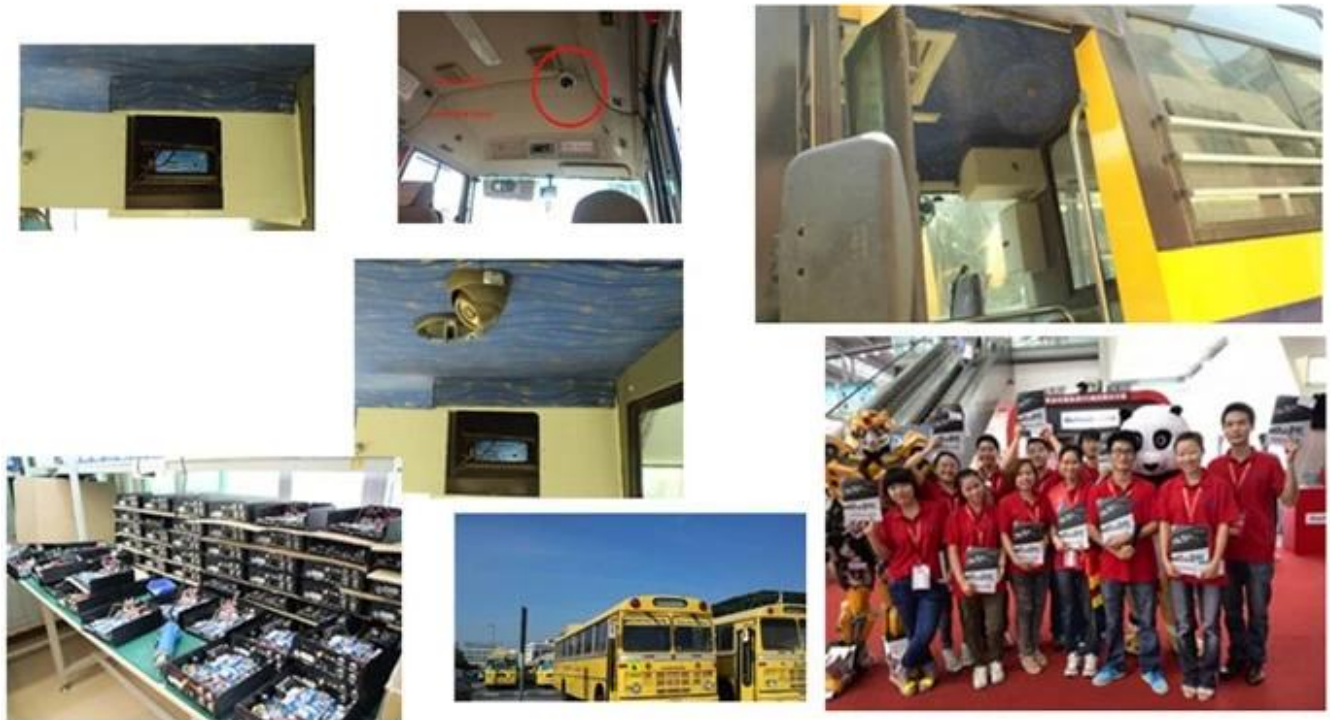


Remote Control



CD (Manual & Software inside)

Software y Casos de gran alcance:



HDD DVR móvil'S Certificación:

VERIFICATION OF CONFORMITY

Verification of Conformity
Reference No.: L21918M020719

Responsible Party : Shenzhen Richmor Technology Development Co., LTD.
Address : #104, 301 West Langgong Road, Langgong New District, Shenzhen, China
Product : Camera
Model No. : RCM-IP1075, RCM-IP2175, RCM-LP1075, RCM-IP1275, RCM-IP2175, RCM-IP3175, RCM-301, RCM-401, RCM-501, RCM-601, RCM-1001, RCM-2001, RCM-3001, RCM-4001, RCM-5001, RCM-6001, RCM-10001, RCM-20001, RCM-30001

Trade Mark : Richmor
Standards : FCC (CFR 47 PART 15 Subpart B, 2011, 47CFR 15.107A-15.109)

Request notes:
This device is in conformity with Part 15 of the FCC Rules and Regulations for radio frequency devices. Operation of this product is subject to the following conditions:
(1) This device may not cause harmful interference, and (2) this device must accept any interference received, including interference that originates from external sources.
This device is subject to the applicable FCC Rules and Regulations. The method of testing used in accordance with the final accurate measurement standards procedures, and that all necessary steps have been confirmed to detect that all production units of the same equipment will continue to comply with the Federal Communications Commission's requirements.



Shenzhen L219 Compliance Testing Laboratories Ltd.
#110, Shuangyan Industrial Park, Tangda Road, Xixiang Street, Bao'an District, Shenzhen, Guangdong, China
Tel: 86(755) 62527122 Fax: 86(755) 62527122
http://www.l219.com.cn Email: admin@l219.com.cn

VERIFICATION OF CONFORMITY

Verification of Conformity
Reference No.: L21918M020719

Responsible Party : Shenzhen Richmor Technology Development Co., LTD.
Address : #104, 301 West Langgong Road, Langgong New District, Shenzhen, China
Product : Mobile DVR
Model No. : RCM-M0201, RCM-M0301, RCM-M0401, RCM-M0501, RCM-M0601, RCM-M0701, RCM-M0801, RCM-M0901, RCM-M1001
Trade Mark : Richmor
Standards : FCC (CFR 47 PART 15 Subpart B, 2011, 47CFR 15.107A-15.109)

Request notes:
This device is in conformity with Part 15 of the FCC Rules and Regulations for radio frequency devices. Operation of this product is subject to the following conditions:
(1) This device may not cause harmful interference, and (2) this device must accept any interference received, including interference that originates from external sources.
This device is subject to the applicable FCC Rules and Regulations. The method of testing used in accordance with the final accurate measurement standards procedures, and that all necessary steps have been confirmed to detect that all production units of the same equipment will continue to comply with the Federal Communications Commission's requirements.



Shenzhen L219 Compliance Testing Laboratories Ltd.
#110, Shuangyan Industrial Park, Tangda Road, Xixiang Street, Bao'an District, Shenzhen, Guangdong, China
Tel: 86(755) 62527122 Fax: 86(755) 62527122
http://www.l219.com.cn Email: admin@l219.com.cn

CERTIFICATE OF CONFORMITY

CERTIFICATE of Conformity
Reference No.: L21918M020719

Applicant : Shenzhen Richmor Technology Development Co., LTD.
Address : #104, 301 West Langgong Road, Langgong New District, Shenzhen, China
Product : Mobile DVR
Model No. : RCM-M0201, RCM-M0301, RCM-M0401, RCM-M0501, RCM-M0601, RCM-M0701, RCM-M0801, RCM-M0901, RCM-M1001
Trade Mark : Richmor

The applicant products have been selected to go with the latest standards and tested in compliance with the following European Directives:
The EMC Directive 2014/53/EU
EN 60950-1:2012 EN 60950-2:2012

The tests were performed in normal operation mode. The test results apply only to the particular sample tested and in the specific radio channel only. This certificate declares conformity in the sample investigated to our test reference number only.
This CE marking is shown below and can be affixed to the product after preparation of necessary technical documentation.
Other relevant Directives have to be obtained.

CE



Shenzhen L219 Compliance Testing Laboratories Ltd.
#110, Shuangyan Industrial Park, Tangda Road, Xixiang Street, Bao'an District, Shenzhen, Guangdong, China
Tel: 86(755) 62527122 Fax: 86(755) 62527122
http://www.l219.com.cn Email: admin@l219.com.cn

CERTIFICATE OF CONFORMITY

CERTIFICATE of Conformity
Reference No.: L21918M020719

Applicant : Shenzhen Richmor Technology Development Co., LTD.
Address : #104, 301 West Langgong Road, Langgong New District, Shenzhen, China
Product : Camera
Model No. : RCM-IP1075, RCM-IP2175, RCM-LP1075, RCM-IP1275, RCM-IP3175, RCM-IP4175, RCM-501, RCM-1001, RCM-2001, RCM-3001, RCM-4001, RCM-5001, RCM-6001, RCM-10001, RCM-20001, RCM-30001

Trade Mark : Richmor

The applicant products have been selected to go with the latest standards and tested in compliance with the following European Directives:
The EMC Directive 2014/53/EU
EN 60950-1:2012 EN 60950-2:2012

The tests were performed in normal operation mode. The test results apply only to the particular sample tested and in the specific radio channel only. This certificate declares conformity in the sample investigated to our test reference number only.
This CE marking is shown below and can be affixed to the product after preparation of necessary technical documentation.
Other relevant Directives have to be obtained.

CE



Shenzhen L219 Compliance Testing Laboratories Ltd.
#110, Shuangyan Industrial Park, Tangda Road, Xixiang Street, Bao'an District, Shenzhen, Guangdong, China
Tel: 86(755) 62527122 Fax: 86(755) 62527122
http://www.l219.com.cn Email: admin@l219.com.cn

CERTIFICATE OF CONFORMITY

CERTIFICATE of Conformity
EMC Directive 2014/53/EU
Reference No.: L21918M020719

When tested as specified, the applicant sample complies with the requirements of Commission Decision of 21 Aug 2012 amending Directive 2011/85/EC

Applicant : Shenzhen Richmor Technology Development Co., LTD.
Address : #104, 301 West Langgong Road, Langgong New District, Shenzhen, China
Trade Mark : Richmor
Product : Camera
Model No. : RCM-IP1075, RCM-IP2175, RCM-LP1075, RCM-IP1275, RCM-IP3175, RCM-IP4175, RCM-501, RCM-1001, RCM-2001, RCM-3001, RCM-4001, RCM-5001, RCM-6001, RCM-10001, RCM-20001, RCM-30001

The test report is issued by the Company subject to its General Conditions of Service printed on our letterhead. The results shown in this test report only refer to the sample tested unless otherwise stated. This Test Report cannot be reproduced, stored in full, without prior written permission of the Company.
Other relevant Directives have to be obtained.

RoHS



Shenzhen L219 Compliance Testing Laboratories Ltd.
#110, Shuangyan Industrial Park, Tangda Road, Xixiang Street, Bao'an District, Shenzhen, Guangdong, China
Tel: 86(755) 62527122 Fax: 86(755) 62527122
http://www.l219.com.cn Email: admin@l219.com.cn

CERTIFICATE OF CONFORMITY

CERTIFICATE of Conformity
RoHS Directive 2011/65/EU
Reference No.: L21918M020719

When tested as specified, the applicant sample complies with the requirements of Commission Decision of 21 Aug 2012 amending Directive 2011/85/EC

Applicant : Shenzhen Richmor Technology Development Co., LTD.
Address : #104, 301 West Langgong Road, Langgong New District, Shenzhen, China
Trade Mark : Richmor
Product : Mobile DVR
Model No. : RCM-M0201, RCM-M0301, RCM-M0401, RCM-M0501, RCM-M0601, RCM-M0701, RCM-M0801, RCM-M0901, RCM-M1001

The test report is issued by the Company subject to its General Conditions of Service printed on our letterhead. The results shown in this test report only refer to the sample tested unless otherwise stated. This Test Report cannot be reproduced, stored in full, without prior written permission of the Company.
Other relevant Directives have to be obtained.

RoHS



Shenzhen L219 Compliance Testing Laboratories Ltd.
#110, Shuangyan Industrial Park, Tangda Road, Xixiang Street, Bao'an District, Shenzhen, Guangdong, China
Tel: 86(755) 62527122 Fax: 86(755) 62527122
http://www.l219.com.cn Email: admin@l219.com.cn

Richmor Otros productos [DVR Nivel Industrial Mobile](#)
DVR móvil'S Embalaje:



DVR móvil'S Envío El artículo:

1. & nbsp; FedEx / DHL / UPS / TNT & nbsp; de & nbsp; muestras, & nbsp; de puerta a puerta;
2. & nbsp; Delivery & nbsp; Tiempo: & nbsp; 7.3 & nbsp; días & nbsp; de & nbsp; muestras; negoniation de & nbsp; lotes & nbsp; bienes.

Pago & nbsp; Condiciones:

1. & nbsp; Pago: & nbsp; T / T, & nbsp; Western & nbsp; Union, PayPal, & nbsp; 30% & nbsp; depósitos; & nbsp; 70% & nbsp; equilibrio & nbsp; antes de & nbsp; entrega.
2. & nbsp; MOQ: & nbsp; 1pcs
3. & nbsp; & nbsp; ;: Garantía 1 año
4. & nbsp; Package & nbsp; Informations: PC 1 & nbsp; por & nbsp; caja, el embalaje de la marca, el embalaje netural y personalizado embalaje

¿Por qué elegirnos?

- 1.We & nbsp; son & nbsp; Alibaba & nbsp; Evaluado & nbsp; 3 & nbsp; años & nbsp; Gold & nbsp; Proveedor.
- 2.We are a factory manufacturing,best production capability ,best quality control, Best Service .
- 3.Inspected by the Inspection Institution of Bureau Veritas Certification.
- 4.100% & nbsp; QC & nbsp; inspección & nbsp; Before & nbsp; El envío.
5. & nbsp; CE / RoHS / FCC & nbsp; la lista, competitve & nbsp; precio.



Richmor

OEM & ODM Service

Brasil World Cup Supplier