

Tarjeta SD + HDD 3G GPS DVR portátil para la escuela autobuses / camiones / Entrenador

(RCM-MDR8000)

DVR móvil'S Especificaciones:

1. Superhigh & nbsp; anti-shock, & nbsp; a prueba de agua, & nbsp; prueba de polvo & nbsp; funciones, fácil & nbsp; instalación
2. Soporte y & nbsp; doble & nbsp; datos & nbsp; backup & nbsp; (Muy & nbsp; Segura)
3. 6 Línea de alarma, Record giro a la izquierda, gire a la derecha y el freno
4. combustible Control de encendido / apagado a distancia
5. El exceso de carga, & nbsp; sobrecorriente, & nbsp; revertir, & nbsp; ESD, & nbsp; apagado & nbsp; protección
6. Automatic & nbsp; ON / OFF & nbsp; configuración, & Nbsp; se & nbsp; set & nbsp; muchos & nbsp; time & nbsp; períodos.
7. CE FCC Rosh Aprobación
8. puerto RJ45

DVR móvil's Fotos:



DVR móvilEs por paramter:

Artículo	Parámetro
A & amp; V & nbsp; de entrada	4 & nbsp; canal, & nbsp; la aviación & nbsp; conector
A & amp; V & nbsp; salida	1 & nbsp; canal, & nbsp; la aviación & nbsp; conector
Video & nbsp; compresión	H.264
Resolución	D1 / HD1 / CIF & nbsp; seleccionable
Video & nbsp; Frame & nbsp; tasa	100 & nbsp; fps & nbsp; (PAL), 120 fps (NTSC), 50fps (4 * D1)
Grabación	Fire & nbsp; grabación, & nbsp; time & nbsp; grabación, & nbsp; alarma & nbsp; grabación
Almacenamiento	SD & nbsp; Card & nbsp; y & nbsp; HDD & nbsp; Apoyo
Alarma	1 canal de & nbsp; alarma; & nbsp; alarma & nbsp; y & nbsp; grabación & nbsp; at & nbsp; & nbsp; misma & nbsp; tiempo
Salida & nbsp; Tensión	12V
reproducción	1-4 & nbsp; canal & nbsp; reproducción
Red	RJ45, & nbsp; Ethernet & nbsp; interfaz, Wired / Wireless & nbsp; redes,
PTZ & nbsp; de control	RS232
GPS	Apoyo, & nbsp; recodificación & nbsp; ruta, & nbsp; velocidad, & nbsp; posición & nbsp; de & nbsp; vehículo
G-SENSOR	Apoyo, & nbsp; grabación & nbsp; vehículo & nbsp; dirección & nbsp; Estado & nbsp; y & nbsp; alarma
Batería	Amplia & nbsp; Voltaje: & nbsp; 6V ~ 48V (70V & nbsp; instantánea & nbsp; tensión)
Potencia	2.4W
Sistema	Embedded & nbsp; de tiempo completo & nbsp; multitask & nbsp; control de & nbsp; sistema
Trabajo & nbsp; medio ambiente	Trabajo & nbsp; temperatura: & nbsp; 20C ° a & nbsp; 50C ° , Trabajo & nbsp; humedad: & nbsp; & lt; el 90%; almacenamiento & nbsp; & nbsp; temperatura: & nbsp; & nbsp; -30C & nbsp; a & nbsp; 70C, Storage & nbsp; Humedad & lt; el 90%
Dimensiones	193mm * 200mm * 53mm & nbsp; & nbsp; 1.5kg
Idioma	Chino, & nbsp; Inglés
Copia de seguridad	SD & nbsp; Cards & nbsp; y & nbsp; 3G & nbsp; Back & nbsp; Up
Wireless & nbsp; Transmisión	GPRS, EDGE, CDMA, WiFi, 3G & nbsp; (& nbsp; EVDO, WCDMA, CDMA2000 & nbsp;) & nbsp; opcional



AV Input Cables



AV Output Cable



Power Cable



IO Cables



3G Antenna



GPS Antenna

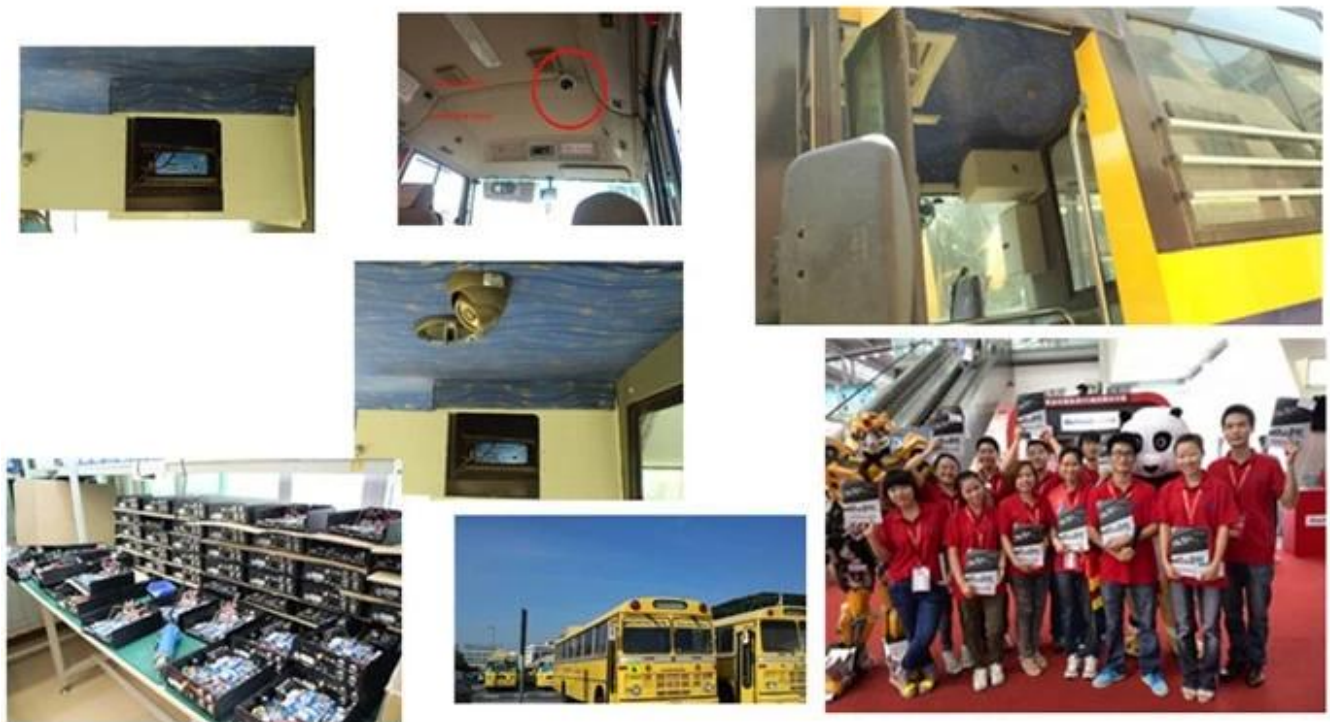


Remote Control



CD (Manual & Software inside)

Software y Casos de gran alcance:



HDD DVR móvil'S Certificación:

VERIFICATION OF CONFORMITY

Verification of Conformity
Reference No.: L21120429272

Responsible Party: Shenzhen Richmor Technology Development Co., LTD.
Address: 2/F No.61 West Longgang Road, Longgang New District, Shenzhen, China
Product: Camera
Model No.: RCM-IP2704, RCM-IP2704L, RCM-LP2704, RCM-IP2706, RCM-IP2706L, RCM-MP2704, RCM-SP, RCM-442, RCM-442L, RCM-442, RCM-442L, RCM-442, RCM-442L, RCM-442, RCM-442L, RCM-442, RCM-442L
Trade Mark: Richmor
Standards: FCC CFR 47 PART 15 Subpart B, 2011, ANSI C63A-2008

Request under:
This device is in conformity with Part 15 of the FCC Rules and Regulations for radio frequency devices. Operation of this product is subject to the following two conditions: (1) This device may not cause harmful interference, and (2) this device must accept any interference received, including interference that originates from external sources. Use is limited to conditions in the applicable FCC Rules and Regulations. The method of testing used is equivalent to the final accurate measurement standards, and that all necessary steps have been confirmed to detect that all production units of the same equipment will continue to comply with the Federal Communications Commission's requirements.

Shenzhen L211 Compliance Testing Laboratory Ltd.
2/F, Longgang Industrial Park, Longgang Road, Longgang New District, Shenzhen, Guangdong, China
Tel: 86757642291122 Fax: 86757642291122
Http://www.l211.com.cn Email: admin@l211.com.cn

Manager
April 13, 2012

VERIFICATION OF CONFORMITY

Verification of Conformity
Reference No.: L21120429277

Responsible Party: Shenzhen Richmor Technology Development Co., LTD.
Address: 2/F No.61 West Longgang Road, Longgang New District, Shenzhen, China
Product: Mobile DVR
Model No.: RCM-MD2704, RCM-MD2704L, RCM-MD2706, RCM-MD2706L, RCM-MD2704, RCM-MD2704L, RCM-MD2706, RCM-MD2706L
Trade Mark: Richmor
Standards: FCC CFR 47 PART 15 Subpart B, 2011, ANSI C63A-2008

Request under:
This device is in conformity with Part 15 of the FCC Rules and Regulations for radio frequency devices. Operation of this product is subject to the following two conditions: (1) This device may not cause harmful interference, and (2) this device must accept any interference received, including interference that originates from external sources. Use is limited to conditions in the applicable FCC Rules and Regulations. The method of testing used is equivalent to the final accurate measurement standards, and that all necessary steps have been confirmed to detect that all production units of the same equipment will continue to comply with the Federal Communications Commission's requirements.

Shenzhen L211 Compliance Testing Laboratory Ltd.
2/F, Longgang Industrial Park, Longgang Road, Longgang New District, Shenzhen, Guangdong, China
Tel: 86757642291122 Fax: 86757642291122
Http://www.l211.com.cn Email: admin@l211.com.cn

Manager
April 13, 2012

CERTIFICATE OF CONFORMITY

CERTIFICATE of Conformity
Reference No.: L21120429274

Applicant: Shenzhen Richmor Technology Development Co., LTD.
Address: 2/F No.61 West Longgang Road, Longgang New District, Shenzhen, China
Product: Mobile DVR
Model No.: RCM-MD2704, RCM-MD2704L, RCM-MD2706, RCM-MD2706L, RCM-MD2704, RCM-MD2704L, RCM-MD2706, RCM-MD2706L
Trade Mark: Richmor

The applicant products have been tested to be with the latest standards and found to conform with the following European Directives:
The EMC Directive 2004/108/EC
EM 99002 2010 EM 99004 2010

The tests were performed in normal operation mode. The test results apply only to the particular sample tested and to the specific test carried out. This certificate declares conformity to the sample investigated in our test reference number only.
This CE markings are shown below can be affixed to the product after preparation of necessary technical documentation.
Other relevant Directives have to be obtained.

Shenzhen L211 Compliance Testing Laboratory Ltd.
2/F, Longgang Industrial Park, Longgang Road, Longgang New District, Shenzhen, Guangdong, China
Tel: 86757642291122 Fax: 86757642291122
Http://www.l211.com.cn Email: admin@l211.com.cn

Manager
April 13, 2012

CERTIFICATE OF CONFORMITY

CERTIFICATE of Conformity
Reference No.: L21120429275

Applicant: Shenzhen Richmor Technology Development Co., LTD.
Address: 2/F No.61 West Longgang Road, Longgang New District, Shenzhen, China
Product: Camera
Model No.: RCM-IP2704, RCM-IP2704L, RCM-LP2704, RCM-IP2706, RCM-IP2706L, RCM-MP2704, RCM-SP, RCM-442, RCM-442L, RCM-442, RCM-442L, RCM-442, RCM-442L, RCM-442, RCM-442L
Trade Mark: Richmor

The applicant products have been tested to be with the latest standards and found to conform with the following European Directives:
The EMC Directive 2004/108/EC
EM 99002 2010 EM 99004 2010

The tests were performed in normal operation mode. The test results apply only to the particular sample tested and to the specific test carried out. This certificate declares conformity to the sample investigated in our test reference number only.
This CE markings are shown below can be affixed to the product after preparation of necessary technical documentation.
Other relevant Directives have to be obtained.

Shenzhen L211 Compliance Testing Laboratory Ltd.
2/F, Longgang Industrial Park, Longgang Road, Longgang New District, Shenzhen, Guangdong, China
Tel: 86757642291122 Fax: 86757642291122
Http://www.l211.com.cn Email: admin@l211.com.cn

Manager
April 13, 2012

CERTIFICATE OF CONFORMITY

CERTIFICATE of Conformity
EMC/RED/2002/900/EC
Reference No.: L21120429276

When tested as specified, the applicant sample complies with the requirements of Commission Decision of 27 July 2011 amending Directive 2011/65/EU.

Applicant: Shenzhen Richmor Technology Development Co., LTD.
Address: 2/F No.61 West Longgang Road, Longgang New District, Shenzhen, China
Trade Mark: Richmor
Product: Camera
Model No.: RCM-IP2704, RCM-IP2704L, RCM-LP2704, RCM-IP2706, RCM-IP2706L, RCM-MP2704, RCM-SP, RCM-442, RCM-442L, RCM-442, RCM-442L, RCM-442, RCM-442L, RCM-442, RCM-442L

The test report is issued by the Company subject to its General Conditions of Service printed on their letterhead. Attention is drawn to the limitations of liability, indemnification and jurisdiction clause on their letterhead. This report also refers to the separately tested unless otherwise stated. This Test Report cannot be reproduced, stored in full, without prior written permission of the Company.
Other relevant directives have to be obtained.

Shenzhen L211 Compliance Testing Laboratory Ltd.
2/F, Longgang Industrial Park, Longgang Road, Longgang New District, Shenzhen, Guangdong, China
Tel: 86757642291122 Fax: 86757642291122
Http://www.l211.com.cn Email: admin@l211.com.cn

Manager
April 13, 2012

CERTIFICATE OF CONFORMITY

CERTIFICATE of Conformity
EMC/RED/2002/900/EC
Reference No.: L21120429278

When tested as specified, the applicant sample complies with the requirements of Commission Decision of 27 July 2011 amending Directive 2011/65/EU.

Applicant: Shenzhen Richmor Technology Development Co., LTD.
Address: 2/F No.61 West Longgang Road, Longgang New District, Shenzhen, China
Trade Mark: Richmor
Product: Mobile DVR
Model No.: RCM-MD2704, RCM-MD2704L, RCM-MD2706, RCM-MD2706L, RCM-MD2704, RCM-MD2704L, RCM-MD2706, RCM-MD2706L

The test report is issued by the Company subject to its General Conditions of Service printed on their letterhead. Attention is drawn to the limitations of liability, indemnification and jurisdiction clause on their letterhead. This report also refers to the separately tested unless otherwise stated. This Test Report cannot be reproduced, stored in full, without prior written permission of the Company.
Other relevant Directives have to be obtained.

Shenzhen L211 Compliance Testing Laboratory Ltd.
2/F, Longgang Industrial Park, Longgang Road, Longgang New District, Shenzhen, Guangdong, China
Tel: 86757642291122 Fax: 86757642291122
Http://www.l211.com.cn Email: admin@l211.com.cn

Manager
April 13, 2012

Richmor Otros productos [DVR Nivel Industrial Mobile](#)
DVR móvil'S Embalaje:



DVR móvil'S Envío El artículo:

1. & nbsp; FedEx / DHL / UPS / TNT & nbsp; de & nbsp; muestras, & nbsp; de puerta a puerta;
2. & nbsp; Delivery & nbsp; Tiempo: & nbsp; 7.3 & nbsp; días & nbsp; de & nbsp; muestras; negoniation de & nbsp; lotes & nbsp; bienes.

Pago & nbsp; Condiciones:

1. & nbsp; Pago: & nbsp; T / T, & nbsp; Western & nbsp; Union, PayPal, & nbsp; 30% & nbsp; depósitos; & nbsp; 70% & nbsp; equilibrio & nbsp; antes de & nbsp; entrega.
2. & nbsp; MOQ: & nbsp; 1pcs
3. & nbsp; & nbsp; ;: Garantía 1 año
4. & nbsp; Package & nbsp; Informations: PC 1 & nbsp; por & nbsp; caja, el embalaje de la marca, el embalaje netural y personalizado embalaje

¿Por qué elegirnos?

- 1.We & nbsp; son & nbsp; Alibaba & nbsp; Evaluado & nbsp; 3 & nbsp; años & nbsp; Gold & nbsp; Proveedor.
- 2.We are a factory manufacturing,best production capability ,best quality control, Best Servi ce .
- 3.Inspected by the Inspection Institution of Bureau Veritas Certification.
- 4.100% & nbsp; QC & nbsp; inspección & nbsp; Before & nbsp; El envío.
5. & nbsp; CE / RoHS / FCC & nbsp; la lista, competitve & nbsp; precio.



Richmor

OEM & ODM Service

Brasil World Cup Supplier