

Bus-Schule Mobile DVR Für Remote Viewing

Modell: RCM-MDR501WDG

Hauptmerkmal:

1. 4 Kanal-SD-Karte Mobile DVR
2. Unterstützung 3G, GPS-Funktion
3. Unterstützung PTZ-Fernbedienung
4. Unterstützung Echtzeit-Überwachung
5. Unterstützt SD von Tagen überschrieben
6. unterstützt Backup und Upgrade mit SD-Karte
7. Selbst recovery nach Stromausfall
8. Stabile Aluminiumlegierung Struktur mit Stoßdämpfer

Bilder:



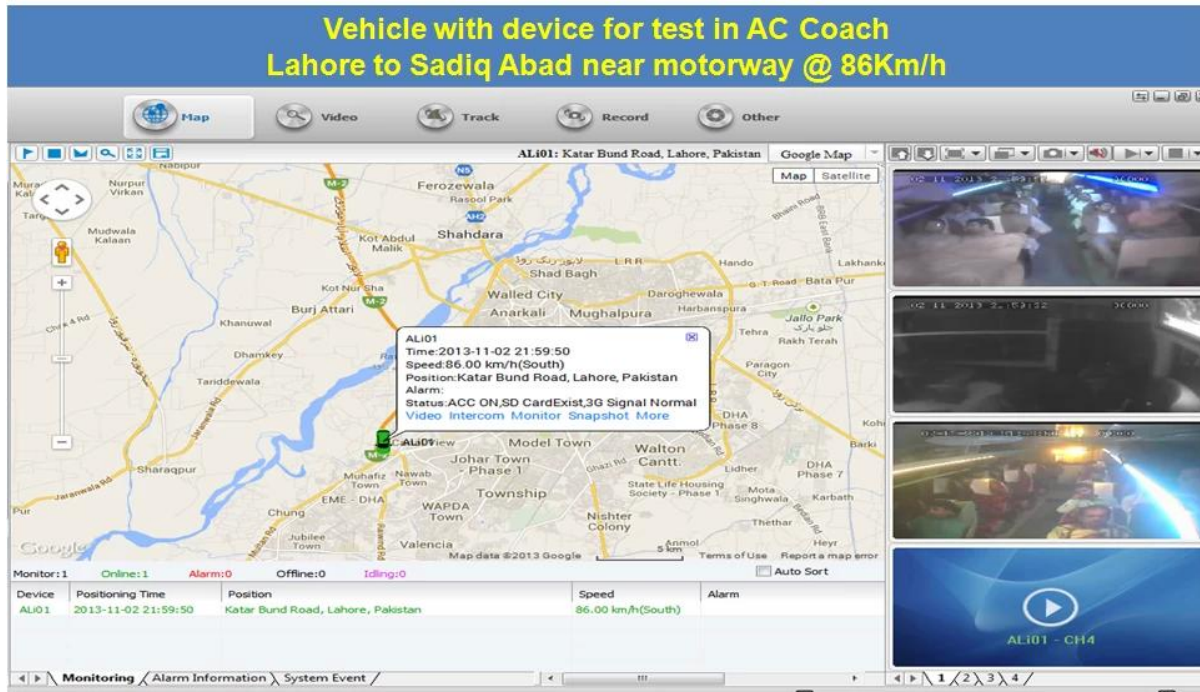


Spezifikation:

Artikel	Geräteparameter	Performance-Index
Name	Produktname	4-Kanal-Mobile DVR (SD Storage)
System	Betriebssystem	Linux
	Betriebs-Schnittstelle	Grafische Schnittstellen, Chinesisch / Englisch optional
	File System	Proprietären Format
	Systemprivilegien	Benutzer Passwort
Video	Video-Eingang	4-Kanal-SDI Unabhängiger Eingang: 1,0 Vss, 75Ω.Both B & amp; W und Farbe Kameras
	Video Ausgang	1 Kanal PAL / NTSC-Ausgang, 1,0 Vss, 75Ω, Composite-Video-Signal
	Video Display	1 oder 4-Screen-Display
	Video-Standard	PAL: 25Frames / sec; NTSC: 30frames / Sek
	Systemressourcen	PAL: 100 Bilder; NTSC: 120 Bilder
Audio-	Audio-Eingang	Zwei unabhängige Eingangskanäle & nbsp; 500Ω
	Audio-Ausgang	1 Kanal (4 Kanäle lassen sich frei konvertieren)
	Grund Output & nbsp; Ebene	1.0-2.2V
	Verzerrung plus Rauschen	≤-30dB
	Aufnahmemodus	Bild und Ton-Synchronisierung
	Audio Compression	ADPCM
Alarm	Alarm in	4 Kanäle unabhängige Eingangs. High Voltage-Trigger
	Alarm aus	2 unabhängige Ausgangskanäle
	Bewegen Detect	verfügbar
Netzwerk Schnittstelle	3G	Kann man WCDMA oder CDMA2000 Modul innerhalb erweitern
GPS-Schnittstelle	GPS	Kann GPS-Modul im Inneren erweitern
Erweitern Schnittstelle	Gegensprechanlage	Kann Intercom Modul innerhalb erweitern
Andere	Stromverbrauch	DC8-36V & nbsp; 5% & nbsp; & nbsp; ≤10W
	Arbeitstemperatur	-20 °C ~ + 85 °C & nbsp; ≤80%
	Uhr	Eingebaute Uhr, Kalender

Verpackung	Produkt-Größe	170 (L) * 141(W) *41(H) mm
	Produkt-Nettogewicht	0,7Kg

Unsere CMS-Software-Anwendung:

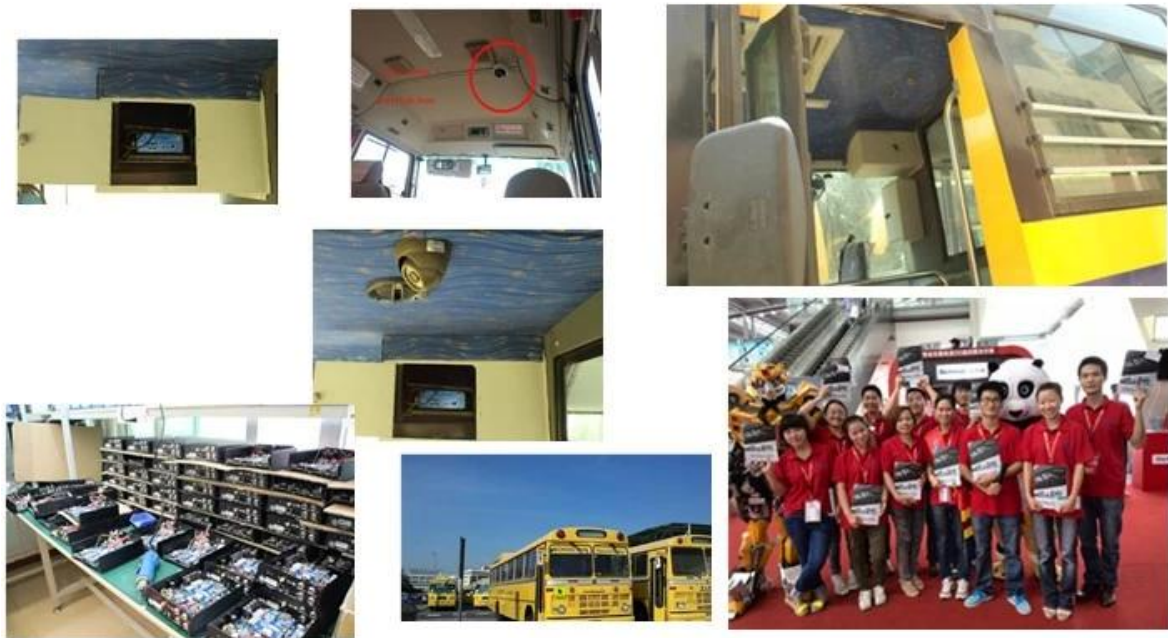
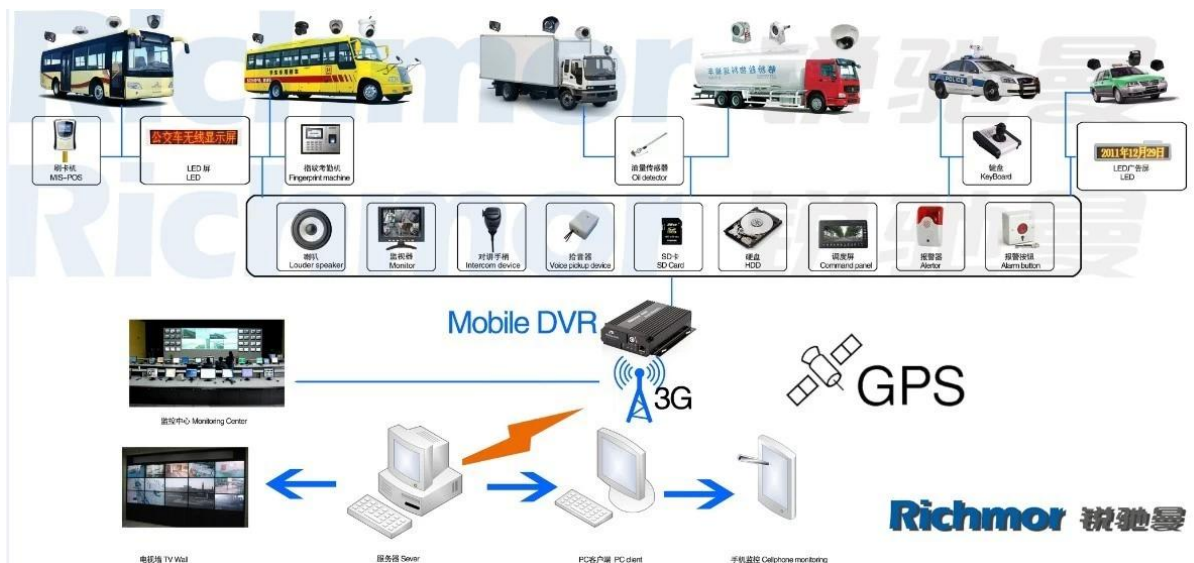


Für Windows-PC Echtzeit-Überwachung

Für IOS & Android OS Handy Surveillance



Unsere Mobile DVR-Projekt für Fahrzeuge



Zertifizierung:

VERIFICATION OF CONFORMITY

Verification of Conformity
Reference No.: LC1304028719

Responsible Party: Shenzhen Reaktor Technology Development Co., LTD.
Address: 27 No.48 West Longgang Road, Longhua New District, Shenzhen, China
Product: Camera
Model No.: RCM-PC20A, RCM-PC20L, RCM-LP20A, RCM-LP20L, RCM-AP20A, RCM-AP20L, RCM-300, RCM-300L, RCM-400, RCM-400L, RCM-500, RCM-500L, RCM-600, RCM-600L, RCM-800, RCM-800L, RCM-1000, RCM-1000L
Trade Mark: Reaktor
Standards: FCC CFR 47 PART 15 Subpart B, 2011, ANSI C63.4-2008

Important note:
This device is in compliance with Part 15 of the FCC Rules and Regulations for radio frequency devices. Operation of the product is subject to the following two conditions: (1) this device may not cause harmful interference, and (2) this device must accept any interference received, including interference that may cause undesired operation. The manufacturer is responsible for ensuring that the product complies with the applicable FCC Rules and Regulations. The method of testing used was according to the most accurate measurement standards possible, and that all necessary steps have been undertaken to ensure that all production units of the goods supplied will continue to comply with the Federal Communications Commission's requirements.

Shenzhen LCC Compliance Testing Laboratory Ltd.
27, Jingqian Industrial Park, Tengda Road, Bao'an District, Shenzhen, Guangdong, China
Tel: 86(755) 82911232 Fax: 86(755) 82911233
http://www.lcc-test.com Email: admin@lcc-test.com

VERIFICATION OF CONFORMITY

Verification of Conformity
Reference No.: LC1304028719

Responsible Party: Shenzhen Reaktor Technology Development Co., LTD.
Address: 27 No.48 West Longgang Road, Longhua New District, Shenzhen, China
Product: Media DVR
Model No.: RCM-M200A, RCM-M200L, RCM-M300A, RCM-M300L, RCM-M400A, RCM-M400L, RCM-M500A, RCM-M500L, RCM-M600A, RCM-M600L
Trade Mark: Reaktor
Standards: FCC CFR 47 PART 15 Subpart B, 2011, ANSI C63.4-2008

Important note:
This device is in compliance with Part 15 of the FCC Rules and Regulations for radio frequency devices. Operation of the product is subject to the following two conditions: (1) this device may not cause harmful interference, and (2) this device must accept any interference received, including interference that may cause undesired operation. The manufacturer is responsible for ensuring that the product complies with the applicable FCC Rules and Regulations. The method of testing used was according to the most accurate measurement standards possible, and that all necessary steps have been undertaken to ensure that all production units of the goods supplied will continue to comply with the Federal Communications Commission's requirements.

Shenzhen LCC Compliance Testing Laboratory Ltd.
27, Jingqian Industrial Park, Tengda Road, Bao'an District, Shenzhen, Guangdong, China
Tel: 86(755) 82911232 Fax: 86(755) 82911233
http://www.lcc-test.com Email: admin@lcc-test.com

CERTIFICATE OF CONFORMITY
Reference No.: LC1304028719

Applicant: Shenzhen Reaktor Technology Development Co., LTD.
Address: 27 No.48 West Longgang Road, Longhua New District, Shenzhen, China
Product: Media DVR
Model No.: RCM-M200A, RCM-M200L, RCM-M300A, RCM-M300L, RCM-M400A, RCM-M400L, RCM-M500A, RCM-M500L, RCM-M600A, RCM-M600L
Trade Mark: Reaktor

The submitted products have been tested to, as well as the label standards and found in compliance with the following European Directives:
The EMC Directive 2014/53/EU
EN 55032: 2012, EN 55034: 2012

The tests were performed in normal operation mode. The test results apply only to the particular sample tested and to the specific tests carried out. This certificate applies specifically to the sample investigated in our test reference number only.
The CE Marking as shown below can be affixed to the product after presentation of necessary technical documentation.
Clear marked Directives have to be obtained.

Shenzhen LCC Compliance Testing Laboratory Ltd.
27, Jingqian Industrial Park, Tengda Road, Bao'an District, Shenzhen, Guangdong, China
Tel: 86(755) 82911232 Fax: 86(755) 82911233
http://www.lcc-test.com Email: admin@lcc-test.com

CERTIFICATE OF CONFORMITY

CERTIFICATE of Conformity
Reference No.: LC1304028719

Applicant: Shenzhen Reaktor Technology Development Co., LTD.
Address: 27 No.48 West Longgang Road, Longhua New District, Shenzhen, China
Product: Camera
Model No.: RCM-PC20A, RCM-PC20L, RCM-LP20A, RCM-LP20L, RCM-AP20A, RCM-AP20L, RCM-300, RCM-300L, RCM-400, RCM-400L, RCM-500, RCM-500L, RCM-600, RCM-600L, RCM-800, RCM-800L, RCM-1000, RCM-1000L
Trade Mark: Reaktor

The submitted products have been tested to, as well as the label standards and found in compliance with the following European Directives:
The EMC Directive 2014/53/EU
EN 55032: 2012, EN 55034: 2012

The tests were performed in normal operation mode. The test results apply only to the particular sample tested and to the specific tests carried out. This certificate applies specifically to the sample investigated in our test reference number only.
The CE Marking as shown below can be affixed to the product after presentation of necessary technical documentation.
Clear marked Directives have to be obtained.

Shenzhen LCC Compliance Testing Laboratory Ltd.
27, Jingqian Industrial Park, Tengda Road, Bao'an District, Shenzhen, Guangdong, China
Tel: 86(755) 82911232 Fax: 86(755) 82911233
http://www.lcc-test.com Email: admin@lcc-test.com

CERTIFICATE OF CONFORMITY

CERTIFICATE of Conformity
2011/65/EU Restriction of Hazardous Substances
Reference No.: LC1304028719

Applicant: Shenzhen Reaktor Technology Development Co., LTD.
Address: 27 No.48 West Longgang Road, Longhua New District, Shenzhen, China
Trade Mark: Reaktor
Product: Camera
Model No.: RCM-PC20A, RCM-PC20L, RCM-LP20A, RCM-LP20L, RCM-AP20A, RCM-AP20L, RCM-300, RCM-300L, RCM-400, RCM-400L, RCM-500, RCM-500L, RCM-600, RCM-600L, RCM-800, RCM-800L, RCM-1000, RCM-1000L

This test result is issued by the Company's subject to the Technical Conditions of Service stated in our Terms of Service. The results shown in this test report refer only to the particular tested sample unless otherwise stated. This Test Report cannot be reproduced, stored in full, without prior written permission of the Company.
Clear marked Directives have to be obtained.

Shenzhen LCC Compliance Testing Laboratory Ltd.
27, Jingqian Industrial Park, Tengda Road, Bao'an District, Shenzhen, Guangdong, China
Tel: 86(755) 82911232 Fax: 86(755) 82911233
http://www.lcc-test.com Email: admin@lcc-test.com

CERTIFICATE OF CONFORMITY

CERTIFICATE of Conformity
2011/65/EU Restriction of Hazardous Substances
Reference No.: LC1304028719

Applicant: Shenzhen Reaktor Technology Development Co., LTD.
Address: 27 No.48 West Longgang Road, Longhua New District, Shenzhen, China
Trade Mark: Reaktor
Product: Media DVR
Model No.: RCM-M200A, RCM-M200L, RCM-M300A, RCM-M300L, RCM-M400A, RCM-M400L, RCM-M500A, RCM-M500L, RCM-M600A, RCM-M600L

This test report is issued by the Company's subject to the General Conditions of Service stated in our Terms of Service. The results shown in this test report refer only to the particular tested sample unless otherwise stated. This Test Report cannot be reproduced, stored in full, without prior written permission of the Company.
Clear marked Directives have to be obtained.

Shenzhen LCC Compliance Testing Laboratory Ltd.
27, Jingqian Industrial Park, Tengda Road, Bao'an District, Shenzhen, Guangdong, China
Tel: 86(755) 82911232 Fax: 86(755) 82911233
http://www.lcc-test.com Email: admin@lcc-test.com

Ähnliche Produkte:



SD Mobile DVR with 3G GPS



SD Mobile DVR with WIFI 3G GPS G-Sensor

Zusammenarbeit Ausdrücke:

Zahlungsbedingungen: T / T, Western Union, Moneygram, Paypal

Lieferzeit: Innerhalb von 5 Werktagen nach die Zahlung bestätigen.

Garantie: 12 Monate

Liefer-Weg: DHL, UPS, Fedex, EMS, TNT etc.

Verpackungsweisen:



Richmor Brand Package



Standard Package

After-Sales-Service:

1. Nach Sie erhalten unsere Produkte, wir helfen Ihnen zu erkennen, wie man es benutzt.
2. Angebot Sie die Software, wenn Sie unsere mobile DVR verwenden.
3. Zwölf Monate Garantie
4. Während unsere Garantie, wenn Sie irgendein Problem haben, können wir Ihnen helfen, es zu lösen.
5. Während unsere Garantie, können Sie an uns zurückschicken, um es zu reparieren.

Bemerkung: Alle qualifizierten Renditen / Ersatz müssen von uns geführt werden, oder wird Ihre Rückkehr nicht annehmen ohne uns im Voraus.

Über uns:



Richmor

OEM & ODM Service

Brasil World Cup Supplier



Inner Training after study from Alibaba in July



Technical Training For Fast Response to Customer Richmor 锐驰曼



lecturer for Execution