

4 Kanal H.264 3G SD Mobile DVR mit GPS-Tracking für die Fahrzeugüberwachung

Modell: RCM-MDR501WDG

Hauptmerkmal:

1. 4 Kanal SD-Karte Mobiler DVR
2. Unterstützung 3G, GPS-Funktion
3. Unterstützung PTZ Fernbedienung
4. Unterstützung Echtzeit-Überwachung
5. Unterstützt SD überschrieben von Tagen
6. Unterstützt Backup und Upgrade mit SD-Karte
7. Selbstauffrischung nach dem Wiederanschalten des Stroms
8. Stabile Aluminiumlegierungsstruktur mit Stoßdämpfer

Bilder:



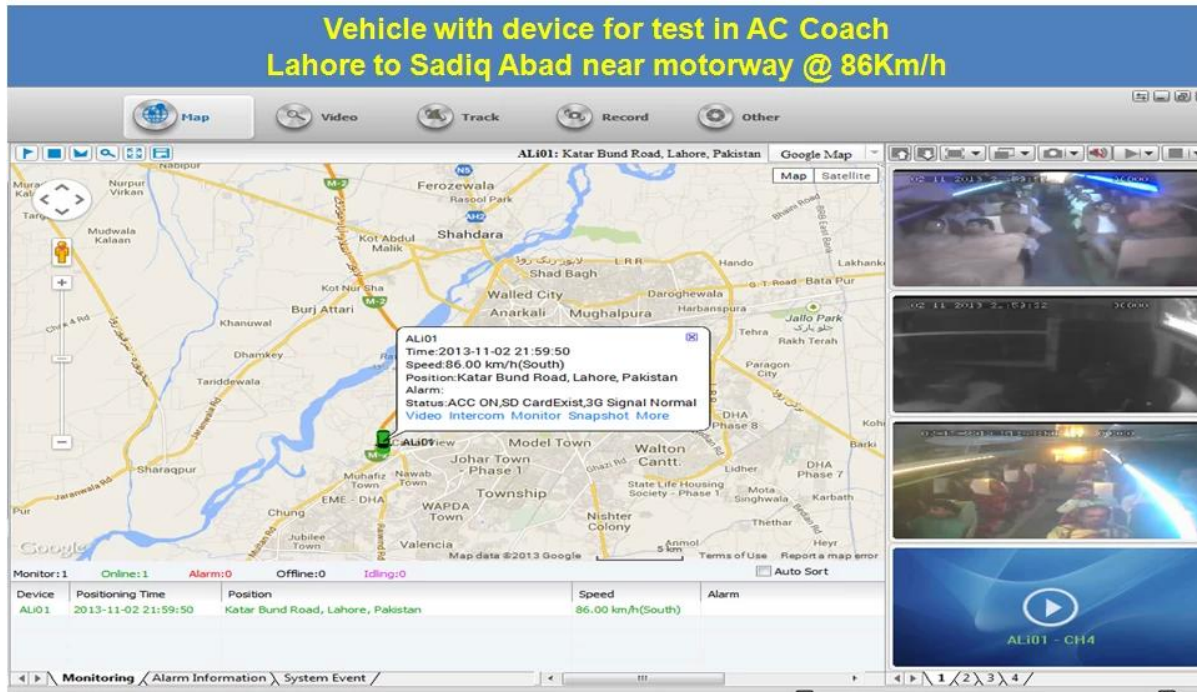


Spezifikation:

Artikel	Geräteparameter	Leistungsindex
Name	Produktname	4 Kanal mobiler DVR (SD-Speicher)
System	Betriebssystem	Linux
	Bedienoberfläche	Graphische Schnittstellen, Chinesisch / Englisch optional
	Dateisystem	Proprietäres Format
	Systemberechtigungen	Benutzer-Passwort
Video	Videoeingang	4ch SDI Unabhängiger Eingang: 1,0 Vp-p, 75 Ω. Beide B & W und Farbe Kameras
	Video Ausgabe	1 Kanal PAL / NTSC Ausgang, 1.0Vp-p, 75Ω, Composite-Video-Signal
	Videoanzeige	1 oder 4 Bildschirmanzeige
	Video Standard	PAL: 25 Frames / Sek; NTSC: 30 Frames / Sek
	Systemressourcen	PAL: 100 Bilder; NTSC: 120 Frames
Audio	Audioeingang	Zwei Kanäle unabhängiger Eingang 500Ω
	Audioausgang	1 Kanal (4 Kanäle können frei konvertiert werden)
	Basis-Ausgangspegel	1.0-2.2V
	Distortion Plus Noise	≤-30 dB
	Aufnahmemodus	Ton- und Bildsynchronisation
	Audio-Kompression	ADPCM
Alarm	Alarm in	4 Kanäle unabhängiger Eingang. Hochspannungsauslöser
	Alarm aus	2 Kanäle Unabhängiger Ausgang
	Move Detect	verfügbar
Netzwerk Schnittstelle	3G	Kann ein WCDMA- oder CDMA2000-Modul nach innen erweitern
GPS-Schnittstelle	GPS	Kann GPS-Modul im Inneren erweitern
Schnittstelle erweitern	Gegensprechanlage	Kann Intercom-Modul innen erweitern
Andere	Energieverbrauch	DC8-36V 5% ≤10W
	Arbeitstemperatur	-20 °C ~ + 85 °C ≤80%
	Uhr	Eingebaute Uhr, Kalender

Verpackung	Produktgröße	170 (L) * 141(W) *41(H) mm
	Produkt Nettogewicht	0,7KG

Unsere CMS-Softwareanwendung:

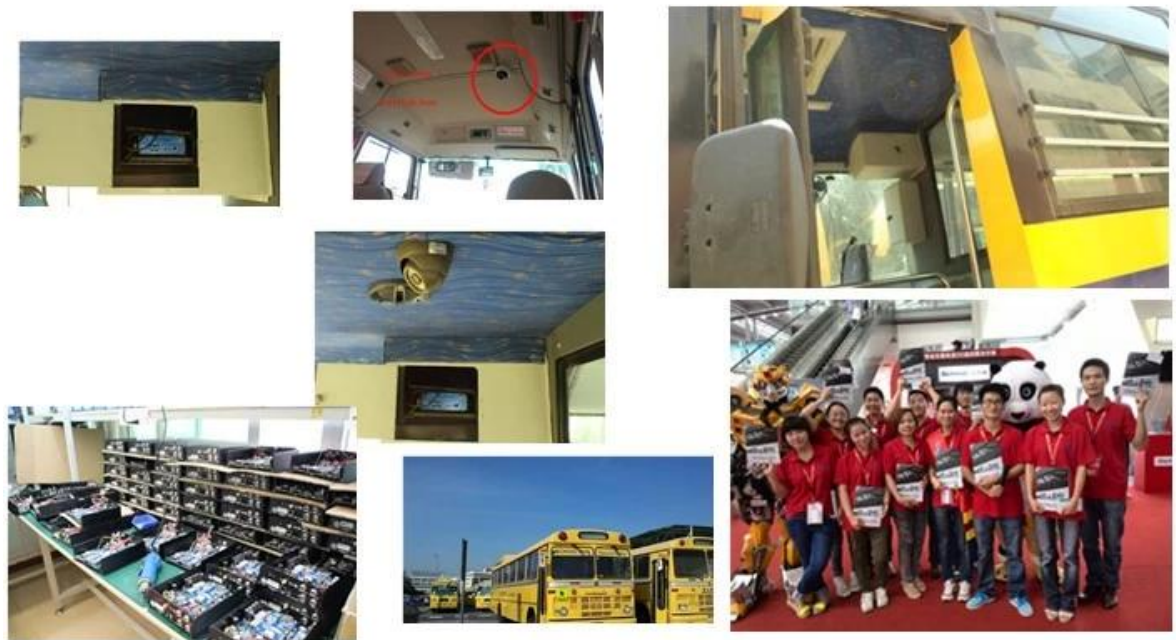
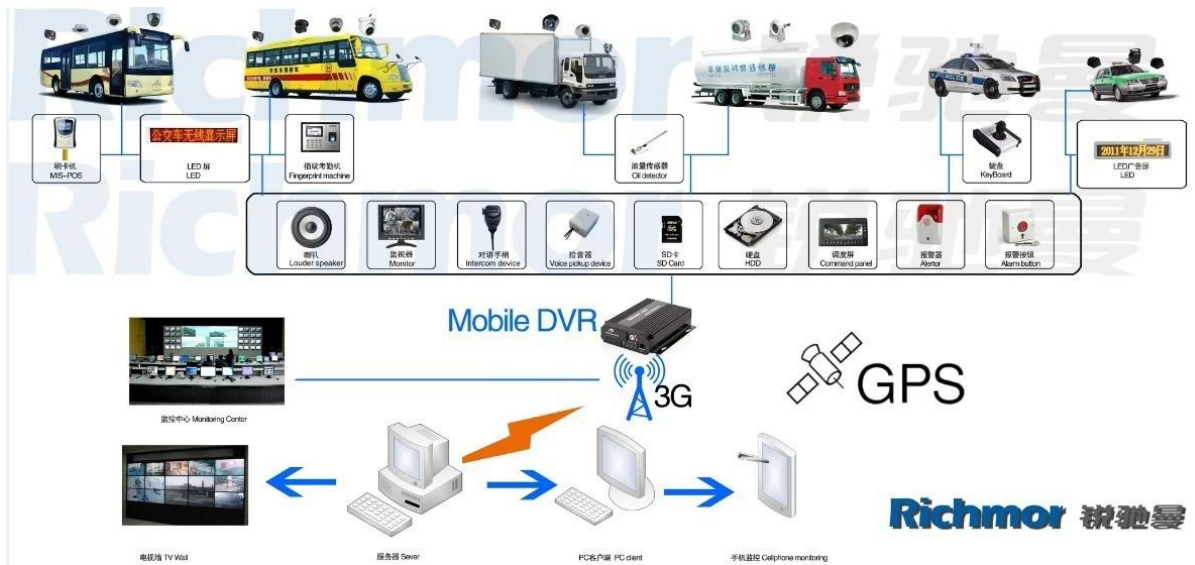


Zum Windows PC Echtzeit-Überwachung

Zum IOS & Android OS Handy Überwachung



Unser mobiles DVR-Projekt für Fahrzeuge



Zertifizierung:

VERIFICATION OF CONFORMITY

Verification of Conformity
Reference No.: LC0104020719

Responsible Party: Shenzhen Reaktor Technology Development Co., LTD.
Address: 27 No.84 West Longgang Road, Longhua New District, Shenzhen, China
Product: Camera
Model No.: RCM-IPC2A, RCM-IPC2L, RCM-LIPC2H, RCM-IPC2T, RCM-IPC2S, RCM-IPC2M, RCM-IPC2X, RCM-IPC2Y, RCM-IPC2Z, RCM-IPC2A, RCM-IPC2B, RCM-IPC2C, RCM-IPC2D, RCM-IPC2E, RCM-IPC2F, RCM-IPC2G, RCM-IPC2H, RCM-IPC2I, RCM-IPC2J, RCM-IPC2K, RCM-IPC2L, RCM-IPC2M, RCM-IPC2N, RCM-IPC2O, RCM-IPC2P, RCM-IPC2Q, RCM-IPC2R, RCM-IPC2S, RCM-IPC2T, RCM-IPC2U, RCM-IPC2V, RCM-IPC2W, RCM-IPC2X, RCM-IPC2Y, RCM-IPC2Z
Trade Mark: Reaktor
Standards: FCC CFR 47 PART 15 Subpart B, 301F, 465D 324.4.2006

Important note:
This device is in compliance with Part 15 of the FCC Rules and Regulations for radio frequency devices. Operation of the product is subject to the following two conditions: (1) This device may not cause harmful interference, and (2) This device must accept any interference received, including interference that may cause undesired operation.
The EMC Directive 2004/108/EC
EN 61010-1:2010, EN 61010-2-1:2010
The test was performed in normal operation mode. The test results apply only to the particular sample tested and to the specific test carried out. This certificate applies specifically to the sample investigated and not the reference number only.
The CE Marking as shown below can be affixed on the product after preparation of necessary technical documentation.
Clear relevant Declaration form to be obtained.

Shenzhen LCC Compliance Testing Laboratory Ltd.
17, Jingqian Industrial Park, Tingle Road, Bao'an Dist., Bao'an District, Shenzhen, Guangdong, China
Tel: 86(755) 83291122 Fax: 86(755) 83291122
http://www.lcc-test.com Email: sales@lcc-test.com

VERIFICATION OF CONFORMITY

Verification of Conformity
Reference No.: LC0104020719

Responsible Party: Shenzhen Reaktor Technology Development Co., LTD.
Address: 27 No.84 West Longgang Road, Longhua New District, Shenzhen, China
Product: Mobile DVR
Model No.: RCM-MD30A, RCM-MD30B, RCM-MD30C, RCM-MD30D, RCM-MD30E, RCM-MD30F, RCM-MD30G, RCM-MD30H, RCM-MD30I, RCM-MD30J, RCM-MD30K, RCM-MD30L, RCM-MD30M, RCM-MD30N, RCM-MD30O, RCM-MD30P, RCM-MD30Q, RCM-MD30R, RCM-MD30S, RCM-MD30T, RCM-MD30U, RCM-MD30V, RCM-MD30W, RCM-MD30X, RCM-MD30Y, RCM-MD30Z
Trade Mark: Reaktor
Standards: FCC CFR 47 PART 15 Subpart B, 301F, 465D 324.4.2006

Important note:
This device is in compliance with Part 15 of the FCC Rules and Regulations for radio frequency devices. Operation of the product is subject to the following two conditions: (1) This device may not cause harmful interference, and (2) This device must accept any interference received, including interference that may cause undesired operation.
The EMC Directive 2004/108/EC
EN 61010-1:2010, EN 61010-2-1:2010
The test was performed in normal operation mode. The test results apply only to the particular sample tested and to the specific test carried out. This certificate applies specifically to the sample investigated and not the reference number only.
The CE Marking as shown below can be affixed on the product after preparation of necessary technical documentation.
Clear relevant Declaration form to be obtained.

Shenzhen LCC Compliance Testing Laboratory Ltd.
17, Jingqian Industrial Park, Tingle Road, Bao'an Dist., Bao'an District, Shenzhen, Guangdong, China
Tel: 86(755) 83291122 Fax: 86(755) 83291122
http://www.lcc-test.com Email: sales@lcc-test.com

CERTIFICATE OF CONFORMITY
Reference No.: LC0104020719

Applicant: Shenzhen Reaktor Technology Development Co., LTD.
Address: 27 No.84 West Longgang Road, Longhua New District, Shenzhen, China
Product: Mobile DVR
Model No.: RCM-MD30A, RCM-MD30B, RCM-MD30C, RCM-MD30D, RCM-MD30E, RCM-MD30F, RCM-MD30G, RCM-MD30H, RCM-MD30I, RCM-MD30J, RCM-MD30K, RCM-MD30L, RCM-MD30M, RCM-MD30N, RCM-MD30O, RCM-MD30P, RCM-MD30Q, RCM-MD30R, RCM-MD30S, RCM-MD30T, RCM-MD30U, RCM-MD30V, RCM-MD30W, RCM-MD30X, RCM-MD30Y, RCM-MD30Z
Trade Mark: Reaktor
Standards: FCC CFR 47 PART 15 Subpart B, 301F, 465D 324.4.2006

The EMC Directive 2004/108/EC
EN 61010-1:2010, EN 61010-2-1:2010
The test was performed in normal operation mode. The test results apply only to the particular sample tested and to the specific test carried out. This certificate applies specifically to the sample investigated and not the reference number only.
The CE Marking as shown below can be affixed on the product after preparation of necessary technical documentation.
Clear relevant Declaration form to be obtained.

Shenzhen LCC Compliance Testing Laboratory Ltd.
17, Jingqian Industrial Park, Tingle Road, Bao'an Dist., Bao'an District, Shenzhen, Guangdong, China
Tel: 86(755) 83291122 Fax: 86(755) 83291122
http://www.lcc-test.com Email: sales@lcc-test.com

CERTIFICATE OF CONFORMITY

CERTIFICATE of Conformity
Reference No.: LC0104020719

Applicant: Shenzhen Reaktor Technology Development Co., LTD.
Address: 27 No.84 West Longgang Road, Longhua New District, Shenzhen, China
Product: Camera
Model No.: RCM-IPC2A, RCM-IPC2L, RCM-LIPC2H, RCM-IPC2T, RCM-IPC2S, RCM-IPC2M, RCM-IPC2X, RCM-IPC2Y, RCM-IPC2Z, RCM-IPC2A, RCM-IPC2B, RCM-IPC2C, RCM-IPC2D, RCM-IPC2E, RCM-IPC2F, RCM-IPC2G, RCM-IPC2H, RCM-IPC2I, RCM-IPC2J, RCM-IPC2K, RCM-IPC2L, RCM-IPC2M, RCM-IPC2N, RCM-IPC2O, RCM-IPC2P, RCM-IPC2Q, RCM-IPC2R, RCM-IPC2S, RCM-IPC2T, RCM-IPC2U, RCM-IPC2V, RCM-IPC2W, RCM-IPC2X, RCM-IPC2Y, RCM-IPC2Z
Trade Mark: Reaktor
Standards: FCC CFR 47 PART 15 Subpart B, 301F, 465D 324.4.2006

The EMC Directive 2004/108/EC
EN 61010-1:2010, EN 61010-2-1:2010
The test was performed in normal operation mode. The test results apply only to the particular sample tested and to the specific test carried out. This certificate applies specifically to the sample investigated and not the reference number only.
The CE Marking as shown below can be affixed on the product after preparation of necessary technical documentation.
Clear relevant Declaration form to be obtained.

Shenzhen LCC Compliance Testing Laboratory Ltd.
17, Jingqian Industrial Park, Tingle Road, Bao'an Dist., Bao'an District, Shenzhen, Guangdong, China
Tel: 86(755) 83291122 Fax: 86(755) 83291122
http://www.lcc-test.com Email: sales@lcc-test.com

CERTIFICATE OF CONFORMITY

CERTIFICATE of Conformity
2011/65/EU Restriction of Hazardous Substances
Reference No.: LC0104020719

Applicant: Shenzhen Reaktor Technology Development Co., LTD.
Address: 27 No.84 West Longgang Road, Longhua New District, Shenzhen, China
Trade Mark: Reaktor
Product: Camera
Model No.: RCM-IPC2A, RCM-IPC2L, RCM-LIPC2H, RCM-IPC2T, RCM-IPC2S, RCM-IPC2M, RCM-IPC2X, RCM-IPC2Y, RCM-IPC2Z, RCM-IPC2A, RCM-IPC2B, RCM-IPC2C, RCM-IPC2D, RCM-IPC2E, RCM-IPC2F, RCM-IPC2G, RCM-IPC2H, RCM-IPC2I, RCM-IPC2J, RCM-IPC2K, RCM-IPC2L, RCM-IPC2M, RCM-IPC2N, RCM-IPC2O, RCM-IPC2P, RCM-IPC2Q, RCM-IPC2R, RCM-IPC2S, RCM-IPC2T, RCM-IPC2U, RCM-IPC2V, RCM-IPC2W, RCM-IPC2X, RCM-IPC2Y, RCM-IPC2Z

The test result is issued by the Company subject to the Technical Conditions of Service stated in our Declaration as shown in the limitations of liability, indemnification and professional services without warranty. The results shown in this test report refer only to the particular tested sample unless otherwise stated. This Test Report cannot be reproduced without the written permission of the Company.
Clear relevant Declaration form to be obtained.

Shenzhen LCC Compliance Testing Laboratory Ltd.
17, Jingqian Industrial Park, Tingle Road, Bao'an Dist., Bao'an District, Shenzhen, Guangdong, China
Tel: 86(755) 83291122 Fax: 86(755) 83291122
http://www.lcc-test.com Email: sales@lcc-test.com

CERTIFICATE OF CONFORMITY

CERTIFICATE of Conformity
2011/65/EU Restriction of Hazardous Substances
Reference No.: LC0104020719

Applicant: Shenzhen Reaktor Technology Development Co., LTD.
Address: 27 No.84 West Longgang Road, Longhua New District, Shenzhen, China
Trade Mark: Reaktor
Product: Mobile DVR
Model No.: RCM-MD30A, RCM-MD30B, RCM-MD30C, RCM-MD30D, RCM-MD30E, RCM-MD30F, RCM-MD30G, RCM-MD30H, RCM-MD30I, RCM-MD30J, RCM-MD30K, RCM-MD30L, RCM-MD30M, RCM-MD30N, RCM-MD30O, RCM-MD30P, RCM-MD30Q, RCM-MD30R, RCM-MD30S, RCM-MD30T, RCM-MD30U, RCM-MD30V, RCM-MD30W, RCM-MD30X, RCM-MD30Y, RCM-MD30Z

The test report is issued by the Company subject to the General Conditions of Service stated in our Declaration as shown in the limitations of liability, indemnification and professional services without warranty. The results shown in this test report refer only to the particular tested sample unless otherwise stated. This Test Report cannot be reproduced without the written permission of the Company.
Clear relevant Declaration form to be obtained.

Shenzhen LCC Compliance Testing Laboratory Ltd.
17, Jingqian Industrial Park, Tingle Road, Bao'an Dist., Bao'an District, Shenzhen, Guangdong, China
Tel: 86(755) 83291122 Fax: 86(755) 83291122
http://www.lcc-test.com Email: sales@lcc-test.com

Verwandte Produkte:



SD Mobile DVR with 3G GPS



SD Mobile DVR with WIFI 3G GPS G-Sensor

Kooperationsbedingungen:

Zahlungsbedingungen: T / T, Western Union, MoneyGram, Paypal

Lieferzeit: Innerhalb von 5 Arbeitstagen nach Bestätigen Sie die Zahlung.

Garantie: 12 Monate

Versandweise: DHL, UPS, FedEx, EMS, TNT usw.

Verpackungsarten:



Richmor Brand Package



Standard Package

Kundendienst:

1. Nach Sie erhalten unsere Produkte, wir helfen Ihnen bei der Realisierung.
2. Angebot Sie die Software, wenn Sie unseren mobilen DVR verwenden.
3. Zwölf Monate Garantie
4. Während unsere Garantie, wenn Sie irgendein Problem haben, können wir Ihnen helfen, es zu lösen.
5. Während unsere garantie, können sie zu uns zurückkehren, um es zu reparieren.

Bemerkung: Alle qualifizierte Rückgabe / Ersatz muss von uns gelenkt werden oder akzeptiert Ihre Rücksendung nicht ohne uns vorher darüber zu informieren.

Über uns:



Richmor

OEM & ODM Service

Brasil World Cup Supplier



Inner Training after study from Alibaba in July



Technical Training For Fast Response to Customer Richmor 锐驰曼



lecturer for Execution