

# H.264 Dual-SD-Karte 3G-Mobilfunk DVR mit Wifi-G-Sensor GPS für Automobilrekorder

Modell: RCM-MDR301WDG

## Hauptmerkmal:

1. 4 Kanal-SD-Karte Mobile DVR
2. Unterstützung 3G, GPS, WIFI, G-Sensor, USV-Funktion
3. Unterstützung PTZ-Fernbedienung
4. Unterstützung Echtzeit-Überwachung
5. Unterstützt SD von Tagen überschrieben
6. unterstützt Backup und Upgrade mit SD-Karte
7. Selbst recovery nach Stromausfall
8. Stabile Aluminiumlegierung Struktur mit Stoßdämpfer

## Bilder:



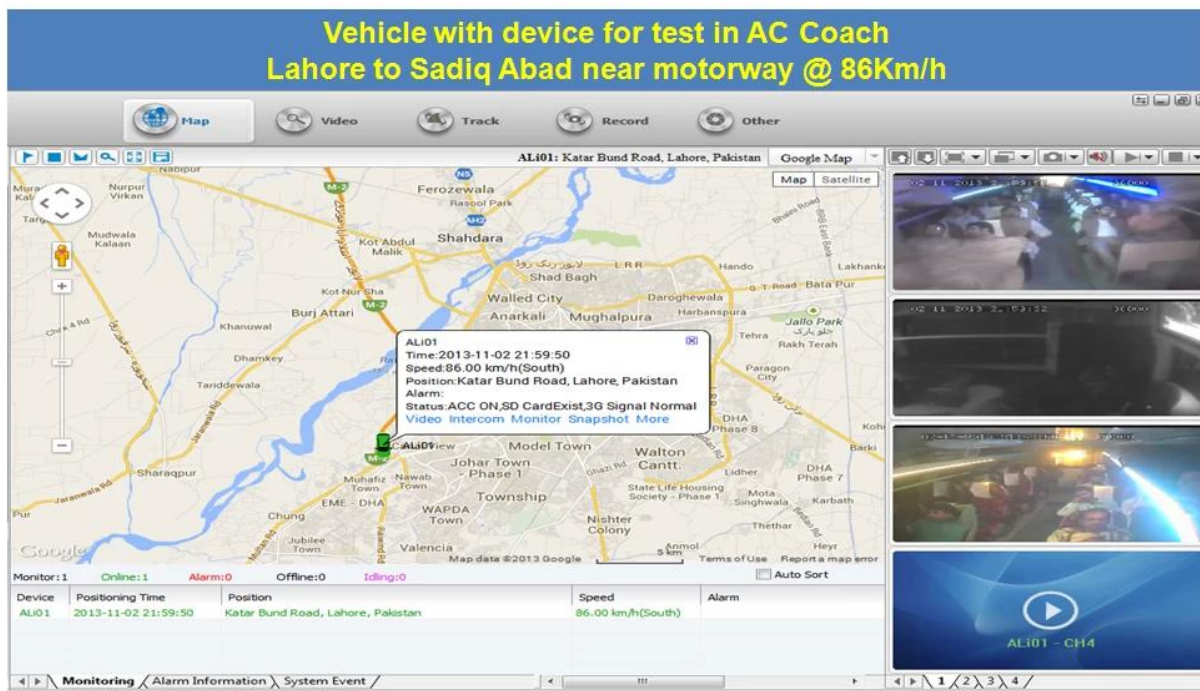


### Spezifikation:

Artikel	Geräteparameter	Performance-Index
<b>Name</b>	Produktname	4-Kanal-Mobile DVR (SD Storage)
<b>System</b>	Betriebssystem	Linux
	Betriebs-Schnittstelle	Grafische Schnittstellen, Chinesisch / Englisch optional
	File System	Proprietären Format
	Systemprivilegien	Benutzer Passwort
<b>Video</b>	Video-Eingang	4-Kanal-SDI Unabhängiger Eingang: 1,0 Vss, 75Ω.Both B & W und Farbe Kameras
	Video Ausgang	1 Kanal PAL / NTSC-Ausgang, 1,0 Vss, 75Ω, Composite-Video-Signal
	Video Display	1 oder 4-Screen-Display
	Video-Standard	PAL: 25Frames / sec; NTSC: 30frames / Sek
	Systemressourcen	PAL: 100 Bilder; NTSC: 120 Bilder

<b>Audio-</b>	Audio-Eingang	Vier unabhängige Eingangskanäle & nbsp; 500Ω
	Audio-Ausgang	1 Kanal (4 Kanäle lassen sich frei konvertieren)
	Grund Output & nbsp; Ebene	1.0-2.2V
	Verzerrung plus Rauschen	≤-30dB
	Aufnahmemodus	Bild und Ton-Synchronisierung
	Audio Compression	ADPCM
<b>Alarm</b>	Alarm in	4 Kanäle unabhängige Eingangs. High Voltage-Trigger
	Alarm aus	2 unabhängige Ausgangskanäle
	Bewegen Detect	verfügbar
<b>Netzwerk Schnittstelle</b>	Drahtleitung Zugang	Kann man RJ45-Ethernet-Port erweitern
	W-lan	Kann man Wifi Modul innerhalb erweitern
	3G	Kann man WCDMA oder CDMA2000 Modul innerhalb erweitern
<b>GPS-Schnittstelle</b>	GPS	Kann GPS-Modul im Inneren erweitern
<b>Erweitern Schnittstelle</b>	Gegensprechanlage	Kann Intercom Modul innerhalb erweitern
	G-Sensor	Kann G-Sensor Modul innerhalb erweitern
<b>Andere</b>	Stromverbrauch	DC8-36V & nbsp; 5% & nbsp; & nbsp; ≤10W
	Arbeitstemperatur	-20 °C ~ + 85 °C & nbsp; ≤80%
	Uhr	Eingebaute Uhr, Kalender
<b>Verpackung</b>	Produkt-Größe	138 (L) * 112 (W) * 36 (H) mm
	Produkt-Nettogewicht	360g

**Unsere CMS-Software-Anwendung:**

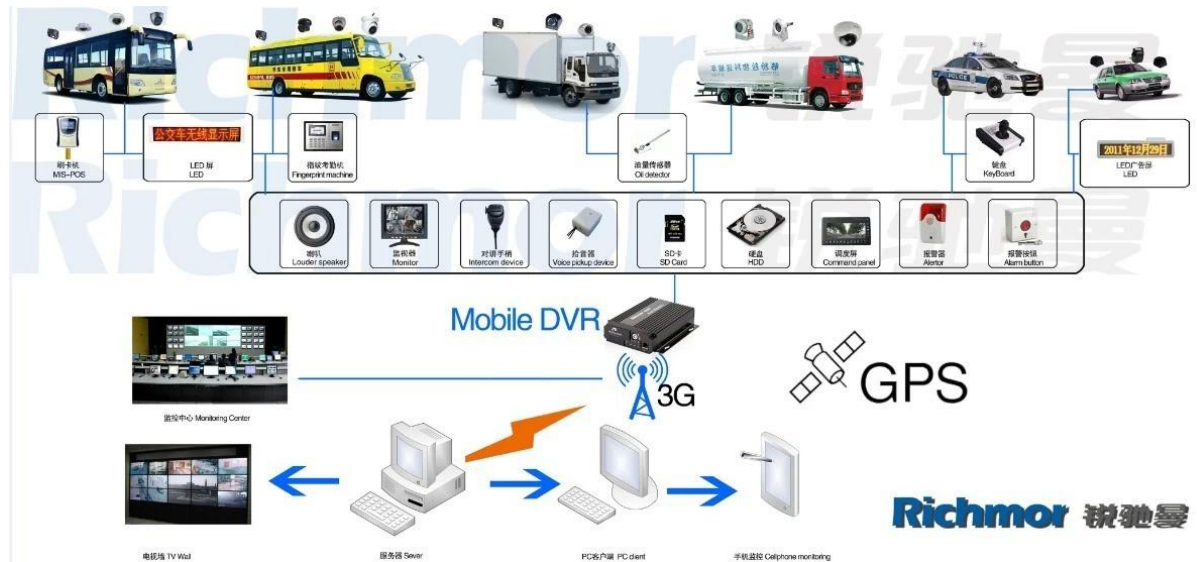


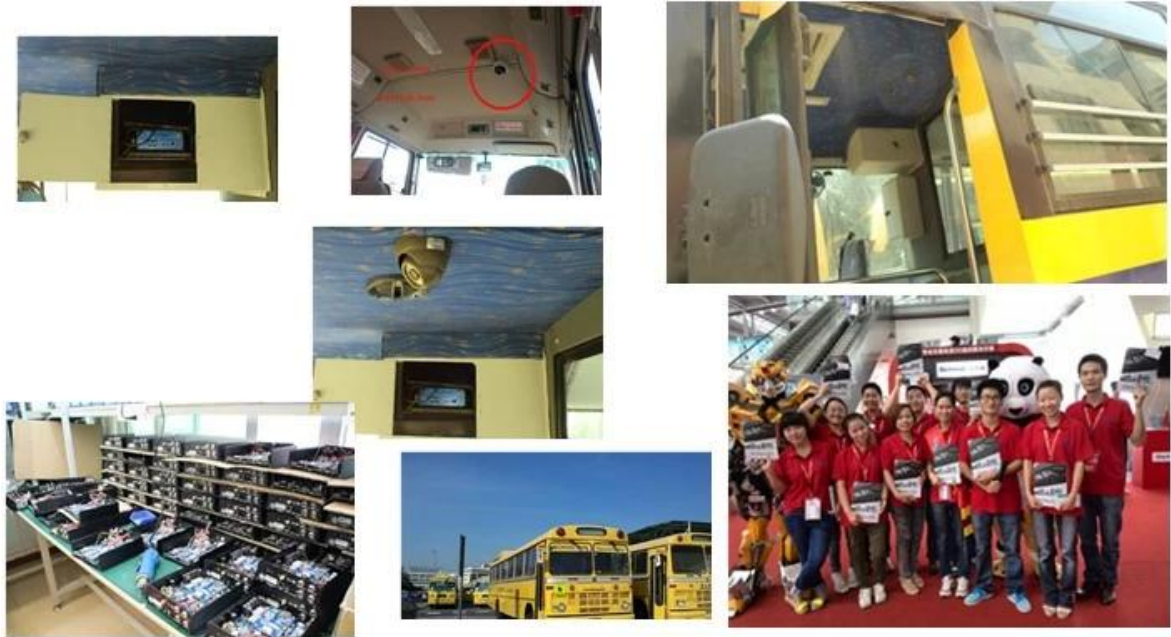
**Für Windows-PC Echtzeit-Überwachung**

## Für IOS & Android OS Handy Surveillance



## Unsere Mobile DVR-Projekt für Fahrzeuge





**Zertifizierung:**

**VERIFICATION OF CONFORMITY**

**Verification of Conformity**  
Reference No.: LC0130482919

Responsible Party: Shenzhen Rixinuo Technology Development Co., Ltd.  
Address: 2F No. 24 West Longquan Road, Longhua New District, Shenzhen, China  
Product: Bus  
Model No.: RCM-IP20H, RCM-IP20S, RCM-LP20H, RCM-LP20S, RCM-MP20H, RCM-MP20S, RCM-J40, RCM-J40S, RCM-J40L, RCM-J40LS, RCM-J60, RCM-J60S, RCM-J60L, RCM-J60LS, RCM-8010H, RCM-8010S, RCM-8010L, RCM-8010LS  
Trade Mark: Rixinuo  
Standard: FCC CFR 47 PART 15 Subpart B, 2011, AMB USA A 2006

**Important note:**  
This device is in compliance with Part 15 of the FCC Rules and Regulations for radio frequency devices. Operation of the product is subject to the following two conditions:  
(1) This device may not cause harmful interference, and (2) This device must accept any interference received, including interference that may cause undesired operation.  
You warrant to conform to the applicable FCC Rules and Regulations. The method of testing used in accordance to the most accurate measurement standards possible, and that all necessary steps have been authorized to assure that all production units of the same equipment will continue to comply with the Federal Communications Commission's requirements.

Shenzhen LCC Compliance Testing Laboratory Ltd.  
1F, Jingyuan Industrial Park, Tiegang Road, Bao'an Dist., Bao'an District, Shenzhen, Guangdong, China  
Tel: 867573-8291132  
http://www.lcc-test.com Email: info@lcc-test.com

Manager  
April 16, 2014

**VERIFICATION OF CONFORMITY**

**Verification of Conformity**  
Reference No.: LC130482919

Responsible Party: Shenzhen Rixinuo Technology Development Co., Ltd.  
Address: 2F No. 24 West Longquan Road, Longhua New District, Shenzhen, China  
Product: Mobile DVR  
Model No.: RCM-MD10H, RCM-MD10S, RCM-MD10L, RCM-MD10LS, RCM-MD10H, RCM-MD10S, RCM-MD10L, RCM-MD10LS  
Trade Mark: Rixinuo  
Standard: FCC CFR 47 PART 15 Subpart B, 2011, AMB USA A 2006

**Important note:**  
This device is in compliance with Part 15 of the FCC Rules and Regulations for radio frequency devices. Operation of the product is subject to the following two conditions:  
(1) This device may not cause harmful interference, and (2) This device must accept any interference received, including interference that may cause undesired operation.  
You warrant to conform to the applicable FCC Rules and Regulations. The method of testing used in accordance to the most accurate measurement standards possible, and that all necessary steps have been authorized to assure that all production units of the same equipment will continue to comply with the Federal Communications Commission's requirements.

Shenzhen LCC Compliance Testing Laboratory Ltd.  
1F, Jingyuan Industrial Park, Tiegang Road, Bao'an Dist., Bao'an District, Shenzhen, Guangdong, China  
Tel: 867573-8291132  
http://www.lcc-test.com Email: info@lcc-test.com

Manager  
April 16, 2014

**CERTIFICATE OF CONFORMITY**

**CERTIFICATE of Conformity**  
Reference No.: LC130482919

Applicant: Shenzhen Rixinuo Technology Development Co., Ltd.  
Address: 2F No. 24 West Longquan Road, Longhua New District, Shenzhen, China  
Product: Mobile DVR  
Model: RCM-MD10H, RCM-MD10S, RCM-MD10L, RCM-MD10LS, RCM-MD10H, RCM-MD10S, RCM-MD10L, RCM-MD10LS  
Trade Mark: Rixinuo

The submitted products have been tested in accordance with the test standards and found in compliance with the following European Directives:  
The EMC Directive 2004/104/EC  
EN 60950: 2012, EN 60950: 2005

This test was performed in normal operation mode. This test result applies only to the particular sample tested and to the specific mode option set. This certificate applies specifically to the sample investigated in our test laboratory only only only.  
The CE markings we placed below can be affixed to the product after completion of necessary technical documentation.  
(Clear abstract drawings have to be attached)

CE

Shenzhen LCC Compliance Testing Laboratory Ltd.  
1F, Jingyuan Industrial Park, Tiegang Road, Bao'an Dist., Bao'an District, Shenzhen, Guangdong, China  
Tel: 867573-8291132  
http://www.lcc-test.com Email: info@lcc-test.com

Manager  
April 16, 2014

**CERTIFICATE OF CONFORMITY**

**CERTIFICATE of Conformity**  
Reference No.: LC130482919

Applicant: Shenzhen Rixinuo Technology Development Co., Ltd.  
Address: 2F No. 24 West Longquan Road, Longhua New District, Shenzhen, China  
Product: Bus  
Model: RCM-IP20H, RCM-IP20S, RCM-LP20H, RCM-LP20S, RCM-MP20H, RCM-MP20S, RCM-J40, RCM-J40S, RCM-J40L, RCM-J40LS, RCM-J60, RCM-J60S, RCM-J60L, RCM-J60LS, RCM-8010H, RCM-8010S, RCM-8010L, RCM-8010LS  
Trade Mark: Rixinuo

The submitted products have been tested in accordance with the test standards and found in compliance with the following European Directives:  
The EMC Directive 2004/104/EC  
EN 60950: 2012, EN 60950: 2005

This test was performed in normal operation mode. This test result applies only to the particular sample tested and to the specific mode option set. This certificate applies specifically to the sample investigated in our test laboratory only only.  
The CE markings we placed below can be affixed to the product after completion of necessary technical documentation.  
(Clear abstract drawings have to be attached)

CE

Shenzhen LCC Compliance Testing Laboratory Ltd.  
1F, Jingyuan Industrial Park, Tiegang Road, Bao'an Dist., Bao'an District, Shenzhen, Guangdong, China  
Tel: 867573-8291132  
http://www.lcc-test.com Email: info@lcc-test.com

Manager  
April 16, 2014

**CERTIFICATE OF CONFORMITY**

**CERTIFICATE of Conformity**  
Reference No.: LC130482919

When tested as specified, the submitted sample complies with the requirements of Commission Decision of 21 July 2011 amending Directive 2011/65/EU.

Applicant: Shenzhen Rixinuo Technology Development Co., Ltd.  
Address: 2F No. 24 West Longquan Road, Longhua New District, Shenzhen, China  
Trade Mark: Rixinuo  
Product: Bus  
Model: RCM-IP20H, RCM-IP20S, RCM-LP20H, RCM-LP20S, RCM-MP20H, RCM-MP20S, RCM-J40, RCM-J40S, RCM-J40L, RCM-J40LS, RCM-J60, RCM-J60S, RCM-J60L, RCM-J60LS, RCM-8010H, RCM-8010S, RCM-8010L, RCM-8010LS

This test report is issued by the Company subject to its General Conditions of Service printed on separate paper in Chinese, English and other languages, and is not valid unless the original document is presented. This report shows in this test report only the results of the test unless otherwise stated. This Test Report cannot be reproduced, copied or full, without prior written permission of the Company.  
(Clear abstract drawings have to be attached)

RoHS

Shenzhen LCC Compliance Testing Laboratory Ltd.  
1F, Jingyuan Industrial Park, Tiegang Road, Bao'an Dist., Bao'an District, Shenzhen, Guangdong, China  
Tel: 867573-8291132  
http://www.lcc-test.com Email: info@lcc-test.com

Manager  
April 16, 2014

**CERTIFICATE OF CONFORMITY**

**CERTIFICATE of Conformity**  
Reference No.: LC130482919

When tested as specified, the submitted sample complies with the requirements of Commission Decision of 21 July 2011 amending Directive 2011/65/EU.

Applicant: Shenzhen Rixinuo Technology Development Co., Ltd.  
Address: 2F No. 24 West Longquan Road, Longhua New District, Shenzhen, China  
Trade Mark: Rixinuo  
Product: Mobile DVR  
Model: RCM-MD10H, RCM-MD10S, RCM-MD10L, RCM-MD10LS, RCM-MD10H, RCM-MD10S, RCM-MD10L, RCM-MD10LS

This test report is issued by the Company subject to its General Conditions of Service printed on separate paper in Chinese, English and other languages, and is not valid unless the original document is presented. This report shows in this test report only the results of the test unless otherwise stated. This Test Report cannot be reproduced, copied or full, without prior written permission of the Company.  
(Clear abstract drawings have to be attached)

RoHS

Shenzhen LCC Compliance Testing Laboratory Ltd.  
1F, Jingyuan Industrial Park, Tiegang Road, Bao'an Dist., Bao'an District, Shenzhen, Guangdong, China  
Tel: 867573-8291132  
http://www.lcc-test.com Email: info@lcc-test.com

Manager  
April 16, 2014

## Ähnliche Produkte:



SD Mobile DVR with 3G GPS



HD Mobile DVR with 3G GPS

## Zusammenarbeit Ausdrücke:

**Zahlungsbedingungen:** T / T, Western Union, Moneygram, Paypal

**Lieferzeit:** Innerhalb von 5 Werktagen nach die Zahlung bestätigen.

**Garantie:** 12 Monate

**Liefer-Weg:** DHL, UPS, Fedex, EMS, TNT etc.

## Verpackungsweisen:



Richmor Brand Package



Standard Package

## After-Sales-Service:

1. Nach Sie erhalten unsere Produkte, wir helfen Ihnen zu erkennen, wie man es benutzt.
2. Angebot Sie die Software, wenn Sie unsere mobile DVR verwenden.
3. Zwölf Monate Garantie
4. Während unsere Garantie, wenn Sie irgendein Problem haben, können wir Ihnen helfen,

es zu lösen.

5. Während unsere Garantie, können Sie an uns zurückschicken, um es zu reparieren.

**Bemerkung: Alle qualifizierten Renditen / Ersatz müssen von uns geführt werden, oder wird Ihre Rückkehr nicht annehmen ohne uns im Voraus.**

### Über uns:



# Richmor

## OEM & ODM Service

### Brasil World Cup Supplier



Inner Training after study from Alibaba in July



Technical Training For Fast Response to Customer Richmor 锐驰曼



lecturer for Execution