

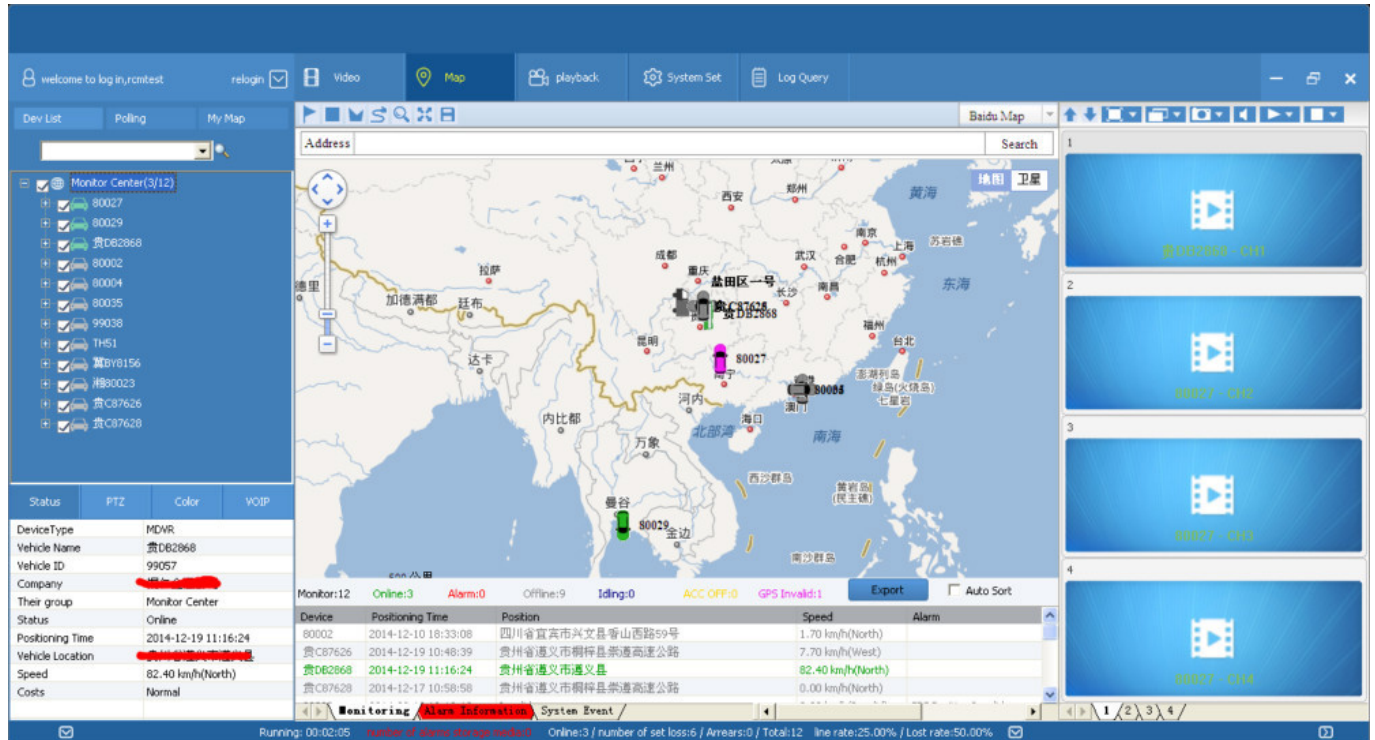
Specification

Item		Parameter
OS		Linux
Language		English/Chinese/Customized
Video Compression		H.264 Compression
OSD		Overlays information such as date time and vehicle ID
GUI	Graphical User Interface	Setup system parameters with the remote control.
Video Record System	Video Input	4CH 960P/720P AHD input,aviation connector, 1.0Vp-p, 75Ω
	Video Onput	1 CVBS, 1.0Vp-p, 75Ω,Aviation,Support 1CH Full Screen,4CH Screen view
	Preview	Support 1 channel and 4 channels preview., Support Manual/Alarm Trigger full screen preview
	Resolution	720P/D1/HD1/CIF, MAX:4 channels of 720P and 4 channels of D1
	Image Quality	1-4 levels, 1 is the highest level.
	Video Standard	PAL: 100f/s , CCIR625 line,50field; NTSC: 120f/s, CCIR525 line,60field; CIF: 256Kbps ~ 1.5Mbps, 8 level video quality optional; HD1: 600Kbps ~ 2.5Mbps, 8 level video quality optional; D1: 800Kbps ~ 3Mbps, 8 level video quality optional; 720P: 4Mbps-6Mbps, multi level video quality optional
	Record Mode	The default setting is auto recording after power on. Timed recording, alarm trigger recording and manual recording are supported.
Audio	Audio Input	4CH Aviation Plug Input
	Audio Output	2CH,headphone connect at front panel, BNC Connect on Back panel
	Compression	G.726 compression, 8KB/s speed
Alarm Input		7CH Alarm Input,1CH AD Input,impulse speed input,Alarm Linkage
Alarm Output		2CH Alarm Output,Support Light/Sound alarm sensor,Oil/Power cut off
Interface		3CH RS232, POS/Fuel Sensor/LED Advertisement Connection
Wireless Transmission		1CH 485 Interface,Connect PTZ Camera Support Built in 3G transmission,, WCDMA, CDMA2000,GPRS, EDGE; Built in 4G module optional, TDD-LTE, FDD-LTE
GPS Position		Support Built GPS/BD Module
Storage	HDD	Max 2.5" 1TB HDD
	SD Card	Max 128GB SD Card Mirror Recording Keep Data Safety
	Update	Support USB Updating, SD Card Updating,OTA Remote Updating
	File Format	H.264
	File System	Special FAT32 File System
Record Replay	USB	USB Interface on Front Panel for data back up by U Disk,Hard Disk
	Video Search	Search By Record Time/Record Type etc
	Playback	Max support 4CH Replay /Stop/Fast/Slow at same time Support forward and backward play at the speed of: x 2,x4,x8,x16.
Security		User/Admin 2 Level Different Password
Optional Functions	Voice Call	Support voice call each other
	TTS Voice Broadcast	Support TTS voice broadcast function.
	Serial Expand	Support LED Advertisement Panel,Oil Sensor, POS,Bus Station Broadcaster,Car OBD,ect.external device
Voltage & Power	Power Management	Wide Voltage.Support Timed/Delay off
	Input Voltage	DC:+6V - +36V
	Output Voltage	+12V~1.5A,+5V~1.5A
	Power	Working <5W
Working Environment	Temperature	-20℃ - +70℃
	Humidity	20% - 80%
	Size	200 (D)* 187(W)* 62(H) mm
Ohters	Weight	1.90 Kg

Our Services



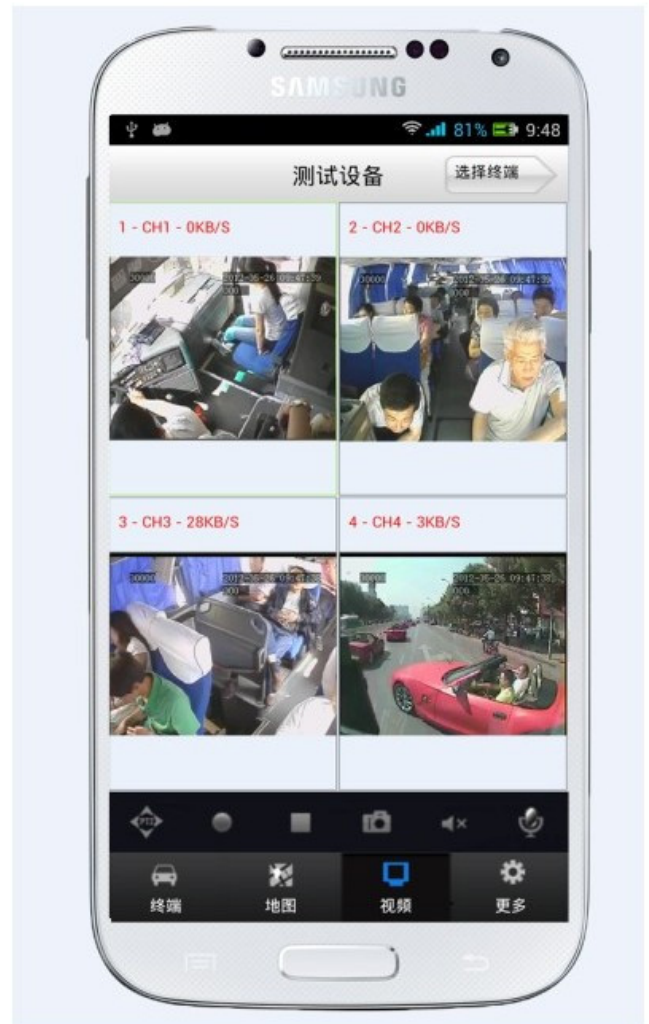
CMSV6 Interface



CMSV6 In Mobile Phone

hand Have all in the palm of your

Real-time monitoring via Mobile Phone
Support iPhone, Android, iPad system



Video & Audio Monitoring Online Vehicle GPS
Satellite Map Video Storage
PTZ control Tracking Display Picture
Snapshot Voice intercom

Q: During playback, the map doesn't show?

A: Possible reasons are as follows;

1.Net cable did not connect to PC;

2.Net works, but the computer can not get to the Internet;

Q: When SD card and HDD records, How is the record coverage?

A: SD card and HDD will record circularly for each other. When they are full, they will delete the original video records respectively.

Q: The device was opened, HDD was installed, but the device can not record successful.

A: 1.Check the HDD/SD Card was formatted or not, the unformatted HH/SD Card can not be used. Enter into the Main Menu - System Setup - Formatting the new installed HDD/SD Card.

2. If the recording channel is closed, if set the timing recording, it can not recording when it beyond the period of timing recording.

3. If the HDD is connect well, if the HDD/SD light is on.



Richmor Brand Package



Standard Package



Shipping

Strong cooperated with DHL/UPS Etc for fast and safety delivery.

a. 2-5 days after payment cleared for sample order.

b. 5-10 days after payment cleared depends on order quantity for bulk order.

Payment



Exhibition

Richmor

CPSE2012 in Shenzhen



CPSE2013

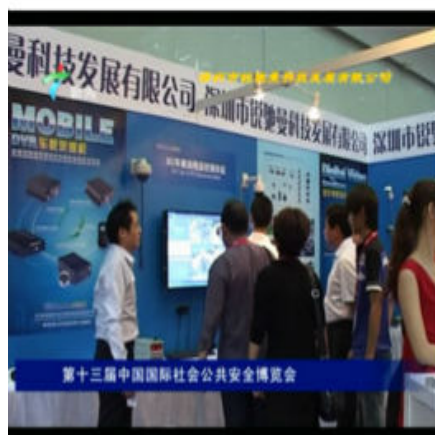
10.29-10.31

4 Booth we have

Welcome you !!!



CPSE2012-- Guangdong TV Report-Shenzhen Richmor



第十三届中国国际公共安全博览会



第十三届中国国际公共安全博览会



第十三届中国国际公共安全博览会

Certifications

 Verification of Conformity Reference No.: L230104000009	
Responsible Party	Shenzhen Richstar Technology Development Co., LTD.
Address	1F No.40 West Longgang Road, Longhua New District, Shenzhen, China
Product	Cables
Model No.	RSC-PP3CH, RSC-PP3CH, RSC-LP3CH, RSC-LP3CH, RSC-PP3PL, RSC-PP3PL, RSC-LP3PL, RSC-LP3PL, RSC-200S, RSC-200S, RSC-600S, RSC-600S, RSC-600CH, RSC-600CH, RSC-200CH
Trade Mark	Richstar
Standards	CCC-CNE AT PART 18 Subpart B1, 2011, ANSI/CAN 130.2-2008

Important note:
 This identity is in conformance with Part 18 of the FCC Rules and Regulations for radio frequency devices. Declaration of this identity is subject to the following two conditions:
 (1) This device may not cause harmful interference, and (2) this device must accept any interference measures, including interference that may cause undesired operation.
 We intend to conform to the applicable FCC Rules and Regulations. The method of testing was in accordance to the most accurate measurement standard available, and that all necessary steps have been followed to assure that all production units of the same equipment will continue to comply with the Federal Communications Commission's requirements.


 Shenzhen LCC Compliance Testing Laboratory Ltd.
 1F, Anping Industrial Park, Pingliang Road, Bao'an Dist., Shenzhen District, Shenzhen
 Guangdong, China
 Tel: 86-755-83691199
 Fax: 86-755-83691199
 Email: shenzhen@lcc-test.com
 www.lcc-test.com

Date: 2012-07-10

VERIFICATION OF CONFORMITY		
	Verification of Conformity Reference No.: 1701004000719	
	Responsible Party	: Shenzhen Weikuan Technology Development Co., LTD.
	Address	: 3F Bay 34 West Longgang Road, Longgang New District, Shenzhen, China
	Product	: Mobile DVR
	Model No.	: WCM-M00000, WCM-M00001, WCM-M00002, WCM-M00003, WCM-M00004, WCM-M00005, WCM-M00006, WCM-M00007, WCM-M00008, WCM-M00009, WCM-M00010
	Trade Mark	: Weikuan
	Standards	: FCC OTC at Part15B Subpart B, 2014, 4800 MHz & 2000
	Important note: This device is in-conformance with Part 15 of the FCC Rules and Regulations for radio frequency emission. Operation of this product is subject to the following conditions: (1) this device may not interfere harmful interference, and (2) this device must accept any interference received, including interference that may cause unusual operation. This device is conform to the applicable FCC Rules and Regulations. The content of labeling was in accordance to the most accurate measurement standards possible, and that all necessary steps have been taken to ensure that all production units of the same equipment will continue to comply with the Federal Communications Commission's requirements.	
	 Shanghai, April 16, 2017	
Shenzhen LCC Compliance Testing Laboratory Ltd. #1, Angang Industrial Park, Tangmei Road, Shean New District, Shenzhen, Guangdong, China Tel: 86-755-8358-1200 http://www.LCC-test.com		
Fax: 86-755-8358-1552 Email: shenzhen@lcc-test.com		

<h1>CERTIFICATE OF CONFORMITY</h1>	 CERTIFICATE of Conformity Reference No.: C-23-0000-201474
<p>Applicant:</p> <p>Address:</p> <p>Product:</p> <p>Model(s):</p> <p>Trade Mark:</p>	<p>> Shenzhen Research Technology Development Co., LTD.</p> <p>> 3F No.10 West Longgang Road, Longgang New District, Shenzhen, China</p> <p>> Mobile DVR</p> <p>> NCM-M0000A, NCM-M0000B, NCM-M0000C, NCM-M0000D, NCM-M0000E, NCM-S0000A, NCM-S0000B</p> <p>> Rishierer</p>
<p>The submitted products have been tested by us with the latest standards and found in compliance with the following European Directives:</p> <p>The EMC Directive 2004/108/EC</p> <p>EN 55022: 2010, EN 55024: 2010</p> <p>The tests were performed in normal operation mode. The test results apply only to the particular sample tested in the specific tests carried out. This certificate applies specifically to the samples investigated in our test reference number only.</p> <p>This CE marking as shown below can be affixed on the product after presentation of necessary technical documentation.</p> <p>Other relevant Directives have to be observed.</p>	
	
 Date: 12. 01. 2014	
<p>Shenzhen CCC Compliance Testing Laboratory Ltd. 3/F, Senguen Industrial Park, Fuyong Road, Bao'an Dist., Shenzhen, Shenzhen, Guangdong, China Tel: 0086-755-83741133 http://www.ccc-ap.com</p> <p>Fax: 0086-755-83741132 Email: information@ccc-ap.com</p>	

CERTIFICATE OF CONFORMITY		
	CERTIFICATE of Conformity Reference No. CCC-08100870	
	Applicant	Shenzhen Minxing Technology Development Co., LTD.
	Address	2F No.88 West Longgang Road, Longgang New District, Shenzhen, China
	Product	2. Tablets
Model(s)	NON-IP3X15, NON-IP3X15, NON-IP3X15, NON-IP3X15, NON-IP3X15, NON-IP3X15, NON-IP3X15, NON-IP3X15, NON-IP3X15, NON-IP3X15, NON-IP3X15, NON-IP3X15, NON-IP3X15, NON-IP3X15, NON-IP3X15, NON-IP3X15	
Trade Mark	Shimono	
The submitted products have been tested by us with the latest standards and found in compliance with the following European Directives: The EMC Directive 2004/108/EC EN 55022: 2010, EN 55024: 2010		
The tests were performed in normal operation mode. The test results apply only to the particular sample tested and to the specific tests carried out. This certificate applies specifically to the samples investigated in our test reference number 2010.		
The CE Markings as shown below can be affixed on the product after presentation of necessary technical documentation.		
(Other relevant Directives have to be stated)		
		 April 10, 2012 
Shenzhen CCB Consumer Testing Laboratory Ltd. 101, Dongguan Industrial Park, Tangxia Town, Dongguan, Guangdong, China Tel: (86)755-83281121 Fax: (86)755-82811122 Email: admin@ccc-cct.com		

CERTIFICATE OF CONFORMITY



CERTIFICATE of Conformity

2017/00201 Restriction of Hazardous Substance

Reference No.: L31360100070

When tested as specified, the submitted sample complies with the requirements of Commission Decision of 21 July 2017 amending Directive 2002/95/EC.

Applicant	Shenzhen Richison Technology Development Co., LTD.
Address	3F, No.88 West Longgang Road, Longgang New District, Shenzhen, China
Trade Mark	Richison
Product	Camera
Models	RCM-AP0126, RCM-AP0128, RCM-AP0129, RCM-AP0134, RCM-AP0135, RCM-AP0136, RCM-AP0137, RCM-AP0138, RCM-AP0139, RCM-AP0140, RCM-AP0141, RCM-AP0142, RCM-AP0143, RCM-AP0144, RCM-AP0145, RCM-AP0146, RCM-AP0147, RCM-AP0148, RCM-AP0149, RCM-AP0150, RCM-AP0151, RCM-AP0152, RCM-AP0153, RCM-AP0154, RCM-AP0155, RCM-AP0156, RCM-AP0157, RCM-AP0158, RCM-AP0159, RCM-AP0160, RCM-AP0161, RCM-AP0162, RCM-AP0163, RCM-AP0164, RCM-AP0165, RCM-AP0166, RCM-AP0167, RCM-AP0168, RCM-AP0169, RCM-AP0170, RCM-AP0171, RCM-AP0172, RCM-AP0173, RCM-AP0174, RCM-AP0175, RCM-AP0176, RCM-AP0177, RCM-AP0178, RCM-AP0179, RCM-AP0180, RCM-AP0181, RCM-AP0182, RCM-AP0183, RCM-AP0184, RCM-AP0185, RCM-AP0186, RCM-AP0187, RCM-AP0188, RCM-AP0189, RCM-AP0190, RCM-AP0191, RCM-AP0192, RCM-AP0193, RCM-AP0194, RCM-AP0195, RCM-AP0196, RCM-AP0197, RCM-AP0198, RCM-AP0199, RCM-AP0200, RCM-AP0201, RCM-AP0202, RCM-AP0203, RCM-AP0204, RCM-AP0205, RCM-AP0206, RCM-AP0207, RCM-AP0208, RCM-AP0209, RCM-AP0210, RCM-AP0211, RCM-AP0212, RCM-AP0213, RCM-AP0214, RCM-AP0215, RCM-AP0216, RCM-AP0217, RCM-AP0218, RCM-AP0219, RCM-AP0220, RCM-AP0221, RCM-AP0222, RCM-AP0223, RCM-AP0224, RCM-AP0225, RCM-AP0226, RCM-AP0227, RCM-AP0228, RCM-AP0229, RCM-AP0230, RCM-AP0231, RCM-AP0232, RCM-AP0233, RCM-AP0234, RCM-AP0235, RCM-AP0236, RCM-AP0237, RCM-AP0238, RCM-AP0239, RCM-AP0240, RCM-AP0241, RCM-AP0242, RCM-AP0243, RCM-AP0244, RCM-AP0245, RCM-AP0246, RCM-AP0247, RCM-AP0248, RCM-AP0249, RCM-AP0250, RCM-AP0251, RCM-AP0252, RCM-AP0253, RCM-AP0254, RCM-AP0255, RCM-AP0256, RCM-AP0257, RCM-AP0258, RCM-AP0259, RCM-AP0260, RCM-AP0261, RCM-AP0262, RCM-AP0263, RCM-AP0264, RCM-AP0265, RCM-AP0266, RCM-AP0267, RCM-AP0268, RCM-AP0269, RCM-AP0270, RCM-AP0271, RCM-AP0272, RCM-AP0273, RCM-AP0274, RCM-AP0275, RCM-AP0276, RCM-AP0277, RCM-AP0278, RCM-AP0279, RCM-AP0280, RCM-AP0281, RCM-AP0282, RCM-AP0283, RCM-AP0284, RCM-AP0285, RCM-AP0286, RCM-AP0287, RCM-AP0288, RCM-AP0289, RCM-AP0290, RCM-AP0291, RCM-AP0292, RCM-AP0293, RCM-AP0294, RCM-AP0295, RCM-AP0296, RCM-AP0297, RCM-AP0298, RCM-AP0299, RCM-AP0300, RCM-AP0301, RCM-AP0302, RCM-AP0303, RCM-AP0304, RCM-AP0305, RCM-AP0306, RCM-AP0307, RCM-AP0308, RCM-AP0309, RCM-AP0310, RCM-AP0311, RCM-AP0312, RCM-AP0313, RCM-AP0314, RCM-AP0315, RCM-AP0316, RCM-AP0317, RCM-AP0318, RCM-AP0319, RCM-AP0320, RCM-AP0321, RCM-AP0322, RCM-AP0323, RCM-AP0324, RCM-AP0325, RCM-AP0326, RCM-AP0327, RCM-AP0328, RCM-AP0329, RCM-AP0330, RCM-AP0331, RCM-AP0332, RCM-AP0333, RCM-AP0334, RCM-AP0335, RCM-AP0336, RCM-AP0337, RCM-AP0338, RCM-AP0339, RCM-AP0340, RCM-AP0341, RCM-AP0342, RCM-AP0343, RCM-AP0344, RCM-AP0345, RCM-AP0346, RCM-AP0347, RCM-AP0348, RCM-AP0349, RCM-AP0350, RCM-AP0351, RCM-AP0352, RCM-AP0353, RCM-AP0354, RCM-AP0355, RCM-AP0356, RCM-AP0357, RCM-AP0358, RCM-AP0359, RCM-AP0360, RCM-AP0361, RCM-AP0362, RCM-AP0363, RCM-AP0364, RCM-AP0365, RCM-AP0366, RCM-AP0367, RCM-AP0368, RCM-AP0369, RCM-AP0370, RCM-AP0371, RCM-AP0372, RCM-AP0373, RCM-AP0374, RCM-AP0375, RCM-AP0376, RCM-AP0377, RCM-AP0378, RCM-AP0379, RCM-AP0380, RCM-AP0381, RCM-AP0382, RCM-AP0383, RCM-AP0384, RCM-AP0385, RCM-AP0386, RCM-AP0387, RCM-AP0388, RCM-AP0389, RCM-AP0390, RCM-AP0391, RCM-AP0392, RCM-AP0393, RCM-AP0394, RCM-AP0395, RCM-AP0396, RCM-AP0397, RCM-AP0398, RCM-AP0399, RCM-AP0400, RCM-AP0401, RCM-AP0402, RCM-AP0403, RCM-AP0404, RCM-AP0405, RCM-AP0406, RCM-AP0407, RCM-AP0408, RCM-AP0409, RCM-AP0410, RCM-AP0411, RCM-AP0412, RCM-AP0413, RCM-AP0414, RCM-AP0415, RCM-AP0416, RCM-AP0417, RCM-AP0418, RCM-AP0419, RCM-AP0420, RCM-AP0421, RCM-AP0422, RCM-AP0423, RCM-AP0424, RCM-AP0425, RCM-AP0426, RCM-AP0427, RCM-AP0428, RCM-AP0429, RCM-AP0430, RCM-AP0431, RCM-AP0432, RCM-AP0433, RCM-AP0434, RCM-AP0435, RCM-AP0436, RCM-AP0437, RCM-AP0438, RCM-AP0439, RCM-AP0440, RCM-AP0441, RCM-AP0442, RCM-AP0443, RCM-AP0444, RCM-AP0445, RCM-AP0446, RCM-AP0447, RCM-AP0448, RCM-AP0449, RCM-AP0450, RCM-AP0451, RCM-AP0452, RCM-AP0453, RCM-AP0454, RCM-AP0455, RCM-AP0456, RCM-AP0457, RCM-AP0458, RCM-AP0459, RCM-AP0460, RCM-AP0461, RCM-AP0462, RCM-AP0463, RCM-AP0464, RCM-AP0465, RCM-AP0466, RCM-AP0467, RCM-AP0468, RCM-AP0469, RCM-AP0470, RCM-AP0471, RCM-AP0472, RCM-AP0473, RCM-AP0474, RCM-AP0475, RCM-AP0476, RCM-AP0477, RCM-AP0478, RCM-AP0479, RCM-AP0480, RCM-AP0481, RCM-AP0482, RCM-AP0483, RCM-AP0484, RCM-AP0485, RCM-AP0486, RCM-AP0487, RCM-AP0488, RCM-AP0489, RCM-AP0490, RCM-AP0491, RCM-AP0492, RCM-AP0493, RCM-AP0494, RCM-AP0495, RCM-AP0496, RCM-AP0497, RCM-AP0498, RCM-AP0499, RCM-AP0500, RCM-AP0501, RCM-AP0502, RCM-AP0503, RCM-AP0504, RCM-AP0505, RCM-AP0506, RCM-AP0507, RCM-AP0508, RCM-AP0509, RCM-AP0510, RCM-AP0511, RCM-AP0512, RCM-AP0513, RCM-AP0514, RCM-AP0515, RCM-AP0516, RCM-AP0517, RCM-AP0518, RCM-AP0519, RCM-AP0520, RCM-AP0521, RCM-AP0522, RCM-AP0523, RCM-AP0524, RCM-AP0525, RCM-AP0526, RCM-AP0527, R

CERTIFICATE OF CONFORMITY	 CERTIFICATE of Conformity ISO/IEC17025:2005 Inspection of Mechanical Structure Reference No.: L2C-004-1028-1A
	When tested as specified, the following sample complies with the requirements of Commission Decision of 21 July 2017 amending Directive 2011/65/EU:
	Applicant: Shenzhen Weichuan Technology Development Co., LTD. Address: 3F Hu 24 Road Longgang Road, Longhua New District, Shenzhen, China Trade Mark: Weichuan Product: Monitor (TV) Model(s): NCM-MD050AL, NCM-MD050L, NCM-MD050L, NCM-MD050L, NCM-MD050L, NCM-MD050L, NCM-MD050L, NCM-MD050L, NCM-MD050L, NCM-MD050L
	<p>The test report is issued by the Company subject to the General Conditions of Service printed herewith. Attention is drawn to the conditions of liability, indemnification and jurisdictional clause defined therein. The results drawn in this test report refer only to the samples tested unless otherwise stated. This Test Report cannot be reproduced except in full, without prior written permission of the Company.</p> <p>Other relevant documents have to be observed.</p>
<h1>RoHS</h1>	
Shenzhen L2C Compliance Testing Laboratory Ltd. 1/F, Yungang Industrial Park, Yungang Road, Xixiang East, Baoan District, Shenzhen, Guangdong, China Tel: +86-755-8328-6666 http://www.l2c.com.cn/	 <i>[Signature]</i> Manager April 16, 2019 Fax: +86-755-8328-6667 Email: admin@l2c.com.cn

Skype:rcmcctvsales5

Not exactly what you want? 1 request,multiple quotations [Get Quotations Now >>](#)

Send your message to this supplier

To:

Jennifer He

*Message:

For better quotations, include:

- A self introduction
- Special requests, if any

[View Sample](#)

Your message must be between 20-8000 characters

Quantity:

1

☐ Recommend matching suppliers if this supplier doesn't contact me on Message Center within 24 hours. **AliSourcePro**

☒ I agree to share my Business Card to the supplier.

Related Searches:

[2TB HDD 3G/4G WIFI GPS G-sensor Vehicle Mobile DVR](#) [mobile dvr](#) [car dvr](#) [gps radar detector](#)
[watch mobile sim card gps](#) [mobile wifi dvr](#) [4g mobile dvr](#)
[mobile dvr 1080p](#)

You may also be interested in :

[3g mdvr hisilicon 3515 chipset mdvr hdd mdvr](#)
[rohs mdvr mdvr client software 4 channel mdvr](#)
[4ch mdvr mdvr cms software sd card mdvr](#)

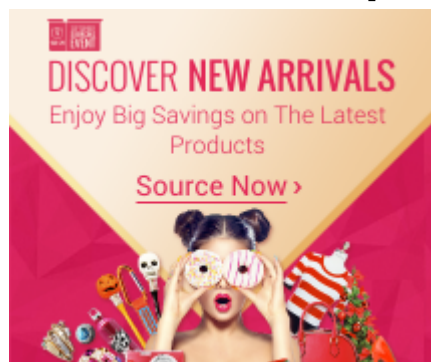
[View more](#)

Verified Supplier - [Shenzhen Richmor Technology Development Co., Ltd.](#)

China (Mainland) | [Contact Details](#)

Experience: Established 2008 , 6 years OEM

Performance: [89.7%](#) Response Rate



You May Like:



[Richmor High end 3G MINI SD Mobile DVR With GPS G-sensor \(Intercom+Motion Detection+Geo Fence etc\)](#)

US \$320 - 360 / Unit

1 Unit/Units



[H264 Mobile CCTV DVR UPS Tech GPS G-sensor WIFI 3G Covert Camera Dvr](#)

US \$270 - 422 / Piece

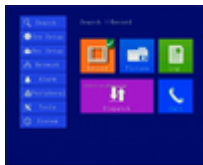
2 Piece/Pieces



[Portable H.264 4ch 3G Mini SD Card mobile DVR for car/truck/school bus security Economic MDVR 3G Mobile DVR with GPS 3G](#)

US \$65 - 225 / Piece

5 Piece/Pieces



[WINDOWS/Andriod/IOS RMVS software 128GB SD Card 720P MDVR 3G GPS 4CH MINI Mobile DVR](#)

US \$65 - 225 / Piece

5 Piece/Pieces



[Richmor 4CH Geo Fence 3G GPS School Bus Mobile DVR Support IOS/Andorid](#)

US \$320 - 360 / Unit

1 Unit/Units



[Richmor D1 Real time Recording 3G WIFI GPRS GPS Mobile DVR For Taxi Fleet Management](#)

US \$370 - 400 / Unit

1 Unit/Units



• [3G Truck DVR School Bus Vehicle DVR 4Ch H.264 Wireless Mobile Dvr GPS Tracking](#)

US \$120 - 263 / Piece

1 Piece/Pieces



• [4Ch Mobile DVR Anti-shock Short Circuit Protection 3G SIM Card Mobile DVR Mini Size GPS Tracking for Car, Bus, Truck etc](#)

US \$110 - 250 / Piece

20 Piece/Pieces



• [4 Channels Mobile DVR with 2 SD Cards, Embedded 3G/GPS/Wi-Fi modules, With 2 SD Cards, WCDMA sim card supported](#)

US \$101 - 195 / Piece

5 Piece/Pieces

