

H.264 Dual-SD-Karte 3G-Mobilfunk DVR mit Wifi-G-Sensor GPS für Automobilrekorder

Modell: RCM-MDR301WDG

Hauptmerkmal:

1. 4 Kanal-SD-Karte Mobile DVR
2. Unterstützung 3G, GPS, WIFI, G-Sensor, USV-Funktion
3. Unterstützung PTZ-Fernbedienung
4. Unterstützung Echtzeit-Überwachung
5. Unterstützt SD von Tagen überschrieben
6. unterstützt Backup und Upgrade mit SD-Karte
7. Selbst recovery nach Stromausfall
8. Stabile Aluminiumlegierung Struktur mit Stoßdämpfer

Bilder:





Spezifikation:

Artikel	Geräteparameter	Performance-Index
Name	Produktname	4-Kanal-Mobile DVR (SD Storage)
System	Betriebssystem	Linux
	Betriebs-Schnittstelle	Grafische Schnittstellen, Chinesisch / Englisch optional
	File System	Proprietären Format
	Systemprivilegien	Benutzer Passwort
Video	Video-Eingang	4-Kanal-SDI Unabhängiger Eingang: 1,0 Vss, 75Ω.Both B & W und Farbe Kameras
	Video Ausgang	1 Kanal PAL / NTSC-Ausgang, 1,0 Vss, 75Ω, Composite-Video-Signal
	Video Display	1 oder 4-Screen-Display
	Video-Standard	PAL: 25Frames / sec; NTSC: 30frames / Sek
	Systemressourcen	PAL: 100 Bilder; NTSC: 120 Bilder

Audio-	Audio-Eingang	Vier unabhängige Eingangskanäle & nbsp; 500Ω
	Audio-Ausgang	1 Kanal (4 Kanäle lassen sich frei konvertieren)
	Grund Output & nbsp; Ebene	1.0-2.2V
	Verzerrung plus Rauschen	≤-30dB
	Aufnahmemodus	Bild und Ton-Synchronisierung
	Audio Compression	ADPCM
Alarm	Alarm in	4 Kanäle unabhängige Eingangs. High Voltage-Trigger
	Alarm aus	2 unabhängige Ausgangskanäle
	Bewegen Detect	verfügbar
Netzwerk Schnittstelle	Drahtleitung Zugang	Kann man RJ45-Ethernet-Port erweitern
	W-lan	Kann man Wifi Modul innerhalb erweitern
	3G	Kann man WCDMA oder CDMA2000 Modul innerhalb erweitern
GPS-Schnittstelle	GPS	Kann GPS-Modul im Inneren erweitern
Erweitern Schnittstelle	Gegensprechanlage	Kann Intercom Modul innerhalb erweitern
	G-Sensor	Kann G-Sensor Modul innerhalb erweitern
Andere	Stromverbrauch	DC8-36V & nbsp; 5% & nbsp; & nbsp; ≤10W
	Arbeitstemperatur	-20 °C ~ + 85 °C & nbsp; ≤80%
	Uhr	Eingebaute Uhr, Kalender
Verpackung	Produkt-Größe	138 (L) * 112 (W) * 36 (H) mm
	Produkt-Nettogewicht	360g

Unsere CMS-Software-Anwendung:

**Vehicle with device for test in AC Coach
Lahore to Sadiq Abad near motorway @ 86Km/h**

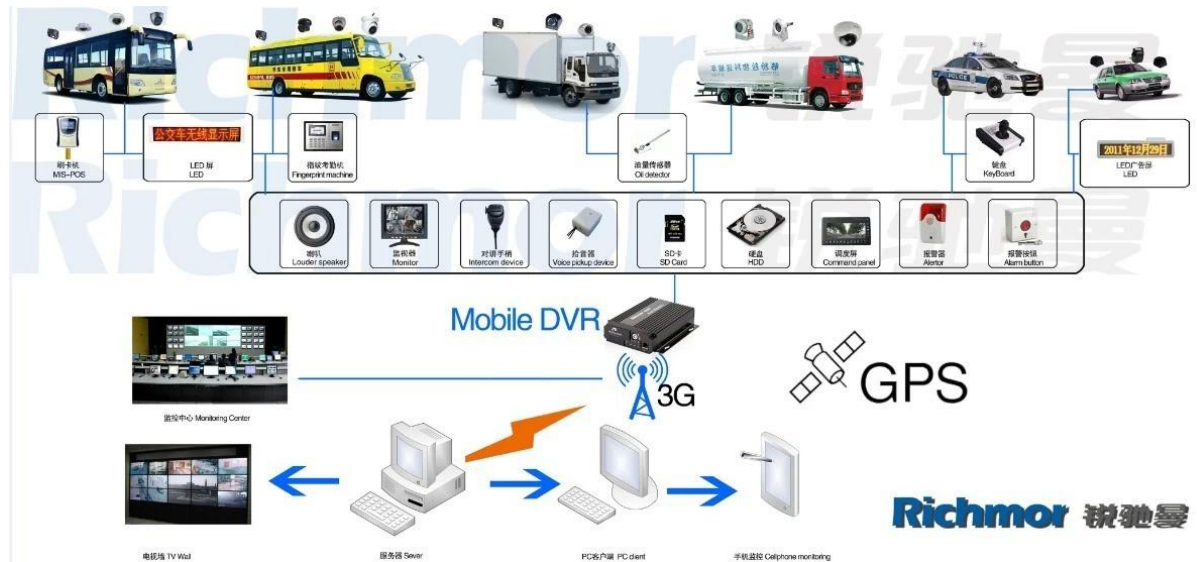
The screenshot displays a comprehensive monitoring interface. At the top, a blue banner provides context: "Vehicle with device for test in AC Coach Lahore to Sadiq Abad near motorway @ 86Km/h". Below this is a navigation bar with icons for Map, Video, Track, Record, and Other. The main area features a Google Map of Lahore, Pakistan, with a green marker indicating the vehicle's location on Katar Bund Road. A detailed information box for device ALI01 is overlaid on the map, showing the following data: Time: 2013-11-02 21:59:50, Speed: 86.00 km/h(South), Position: Katar Bund Road, Lahore, Pakistan, Alarm: Status: ACC ON, SD Card Exist, 3G Signal Normal, and options for Video, Intercom, Monitor, and Snapshot. To the right of the map, three video feeds are visible, showing the interior of the vehicle from different angles. At the bottom, a status bar indicates "Monitoring / Alarm Information / System Event" and includes a playback control for "ALI01 - CH4".

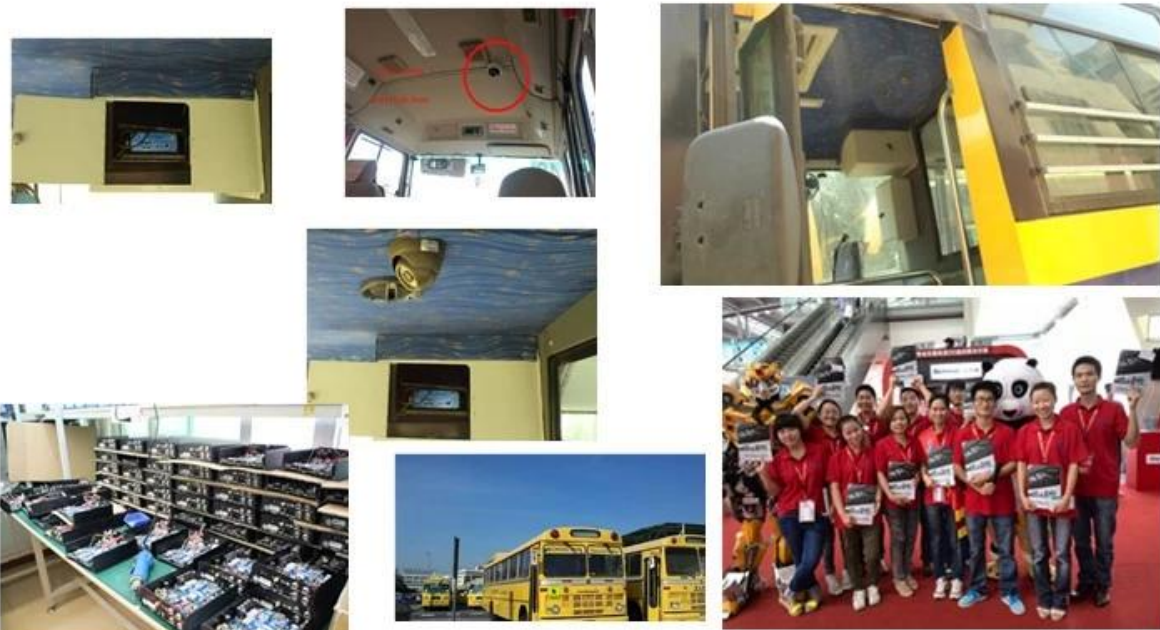
Für Windows-PC Echtzeit-Überwachung

Für IOS & Android OS Handy Surveillance



Unsere Mobile DVR-Projekt für Fahrzeuge





Zertifizierung:

VERIFICATION OF CONFORMITY

Verification of Conformity
Reference No.: L12123456789

Responsible Party : Shenzhen Ruihou Technology Development Co., Ltd.

Address : 2F No. 88 West Longguan Road, Longhua New District, Shenzhen, China

Product : Tablet

Model No. : RHM-PC20, RHM-PC20L, RHM-LPC10, RHM-LPC10L, RHM-MP10, RHM-MP10L, RHM-JAS, RHM-JASL, RHM-SM, RHM-SML, RHM-KAS, RHM-KASL, RHM-SM, RHM-SML, RHM-KAS, RHM-KASL

Trade Mark : Ruihou

Standard : FCC CFR 47 PART 15 Subpart B, 2017, AND CEM 4:2016

Important note: This device is in conformance with Part 15 of the FCC Rules and Regulations for radio frequency device. Operation of this product is subject to the following two conditions: (1) this device may not cause harmful interference, and (2) this device must accept any interference received, including interference that originates from authorized operations. You agree to conform to the applicable FCC Rules and Regulations. The method of testing was in accordance to the most accurate measurement standards possible, and that all necessary steps have been followed to assure that all production units of the same equipment will continue to comply with the Federal Communications Commission's requirements.

Manager
[Signature]
April 16, 2014

Shenzhen LCC Compliance Testing Laboratory Ltd.
17, Hongqiang Industrial Park, Tenghu Road, Bantian Street, Bantian District, Shenzhen, Guangdong, China
Tel: 085733428115 Fax: 085733428113
http://www.lcc-test.com Email: info@lcc-test.com

VERIFICATION OF CONFORMITY

Verification of Conformity
Reference No.: L12345678910

Responsible Party : Shenzhen Ruihou Technology Development Co., Ltd.

Address : 2F No. 88 West Longguan Road, Longhua New District, Shenzhen, China

Product : Mobile DVR

Model No. : RHM-MD100, RHM-MD100L, RHM-MD100L, RHM-MD100L, RHM-MD100L, RHM-MD100L, RHM-MD100L, RHM-MD100L

Trade Mark : Ruihou

Standard : FCC CFR 47 PART 15 Subpart B, 2017, AND CEM 4:2016

Important note: This device is in conformance with Part 15 of the FCC Rules and Regulations for radio frequency device. Operation of this product is subject to the following two conditions: (1) this device may not cause harmful interference, and (2) this device must accept any interference received, including interference that originates from authorized operations. You agree to conform to the applicable FCC Rules and Regulations. The method of testing was in accordance to the most accurate measurement standards possible, and that all necessary steps have been followed to assure that all production units of the same equipment will continue to comply with the Federal Communications Commission's requirements.

Manager
[Signature]
April 16, 2014

Shenzhen LCC Compliance Testing Laboratory Ltd.
17, Hongqiang Industrial Park, Tenghu Road, Bantian Street, Bantian District, Shenzhen, Guangdong, China
Tel: 085733428115 Fax: 085733428113
http://www.lcc-test.com Email: info@lcc-test.com

CERTIFICATE OF CONFORMITY

CERTIFICATE of Conformity
Reference No.: L12345678910

Applicant : Shenzhen Ruihou Technology Development Co., Ltd.

Address : 2F No. 88 West Longguan Road, Longhua New District, Shenzhen, China

Product : Mobile DVR

Model No. : RHM-MD100L, RHM-MD100L, RHM-MD100L, RHM-MD100L, RHM-MD100L, RHM-MD100L, RHM-MD100L, RHM-MD100L

Trade Mark : Ruihou

The submitted products have been tested in our lab under identical and typical conditions with the following European Directives:
The EMC Directive 2014/53/EU
EN 61010-2:2011, EN 61010-1:2011

The tests were performed in normal operation mode. The test results apply only to the certificate number listed and to the specific model number only. This certificate applies specifically to the sample investigated in our lab reference number only.

The CE markings as shown below can be affixed to the product after completion of necessary technical documentation.

Other relevant Directives have to be observed.

Manager
[Signature]
April 16, 2014

CE

Shenzhen LCC Compliance Testing Laboratory Ltd.
17, Hongqiang Industrial Park, Tenghu Road, Bantian Street, Bantian District, Shenzhen, Guangdong, China
Tel: 085733428115 Fax: 085733428113
http://www.lcc-test.com Email: info@lcc-test.com

CERTIFICATE OF CONFORMITY

CERTIFICATE of Conformity
Reference No.: L12345678910

Applicant : Shenzhen Ruihou Technology Development Co., Ltd.

Address : 2F No. 88 West Longguan Road, Longhua New District, Shenzhen, China

Product : Tablet

Model No. : RHM-PC20L, RHM-PC20L, RHM-LPC10L, RHM-LPC10L, RHM-MP10L, RHM-MP10L, RHM-JASL, RHM-JASL, RHM-SML, RHM-SML, RHM-KASL, RHM-KASL, RHM-SM, RHM-SM, RHM-KAS, RHM-KAS, RHM-SM, RHM-SM, RHM-KAS, RHM-KAS

Trade Mark : Ruihou

The submitted products have been tested in our lab under identical and typical conditions with the following European Directives:
The EMC Directive 2014/53/EU
EN 61010-2:2011, EN 61010-1:2011

The tests were performed in normal operation mode. The test results apply only to the certificate number listed and to the specific model number only. This certificate applies specifically to the sample investigated in our lab reference number only.

The CE markings as shown below can be affixed to the product after completion of necessary technical documentation.

Other relevant Directives have to be observed.

Manager
[Signature]
April 16, 2014

CE

Shenzhen LCC Compliance Testing Laboratory Ltd.
17, Hongqiang Industrial Park, Tenghu Road, Bantian Street, Bantian District, Shenzhen, Guangdong, China
Tel: 085733428115 Fax: 085733428113
http://www.lcc-test.com Email: info@lcc-test.com

CERTIFICATE OF CONFORMITY

CERTIFICATE of Conformity
Reference No.: L12345678910

When tested as specified, the submitted sample complies with the requirements of Commission Decision of 21 July 2011 amending Directive 2011/65/EU.

Applicant : Shenzhen Ruihou Technology Development Co., Ltd.

Address : 2F No. 88 West Longguan Road, Longhua New District, Shenzhen, China

Trade Mark : Ruihou

Product : Tablet

Model No. : RHM-PC20L, RHM-PC20L, RHM-LPC10L, RHM-LPC10L, RHM-MP10L, RHM-MP10L, RHM-JASL, RHM-JASL, RHM-SML, RHM-SML, RHM-KASL, RHM-KASL, RHM-SM, RHM-SM, RHM-KAS, RHM-KAS, RHM-SM, RHM-SM, RHM-KAS, RHM-KAS

The test report is issued by the Company subject to its General Conditions of Service printed on separate sheet in the format of safety, identification and confidential assessment defined therein. This report shown in this test report only refer to the certificate listed unless otherwise stated. This Test Report cannot be reproduced, copied or full, without prior written permission of the Company.

Other relevant Directives have to be observed.

Manager
[Signature]
April 16, 2014

RoHS

Shenzhen LCC Compliance Testing Laboratory Ltd.
17, Hongqiang Industrial Park, Tenghu Road, Bantian Street, Bantian District, Shenzhen, Guangdong, China
Tel: 085733428115 Fax: 085733428113
http://www.lcc-test.com Email: info@lcc-test.com

CERTIFICATE OF CONFORMITY

CERTIFICATE of Conformity
Reference No.: L12345678910

When tested as specified, the submitted sample complies with the requirements of Commission Decision of 21 July 2011 amending Directive 2011/65/EU.

Applicant : Shenzhen Ruihou Technology Development Co., Ltd.

Address : 2F No. 88 West Longguan Road, Longhua New District, Shenzhen, China

Trade Mark : Ruihou

Product : Mobile DVR

Model No. : RHM-MD100L, RHM-MD100L, RHM-MD100L, RHM-MD100L, RHM-MD100L, RHM-MD100L, RHM-MD100L, RHM-MD100L

The test report is issued by the Company subject to its General Conditions of Service printed on separate sheet in the format of safety, identification and confidential assessment defined therein. The results shown in this test report refer only to the certificate listed unless otherwise stated. This Test Report cannot be reproduced, copied or full, without prior written permission of the Company.

Other relevant Directives have to be observed.

Manager
[Signature]
April 16, 2014

RoHS

Shenzhen LCC Compliance Testing Laboratory Ltd.
17, Hongqiang Industrial Park, Tenghu Road, Bantian Street, Bantian District, Shenzhen, Guangdong, China
Tel: 085733428115 Fax: 085733428113
http://www.lcc-test.com Email: info@lcc-test.com

Ähnliche Produkte:



SD Mobile DVR with 3G GPS



HD Mobile DVR with 3G GPS

Zusammenarbeit Ausdrücke:

Zahlungsbedingungen: T / T, Western Union, Moneygram, Paypal

Lieferzeit: Innerhalb von 5 Werktagen nach die Zahlung bestätigen.

Garantie: 12 Monate

Liefer-Weg: DHL, UPS, Fedex, EMS, TNT etc.

Verpackungsweisen:



Richmor Brand Package



Standard Package

After-Sales-Service:

1. Nach Sie erhalten unsere Produkte, wir helfen Ihnen zu erkennen, wie man es benutzt.
2. Angebot Sie die Software, wenn Sie unsere mobile DVR verwenden.
3. Zwölf Monate Garantie
4. Während unsere Garantie, wenn Sie irgendein Problem haben, können wir Ihnen helfen,

es zu lösen.

5. Während unsere Garantie, können Sie an uns zurückschicken, um es zu reparieren.

Bemerkung: Alle qualifizierten Renditen / Ersatz müssen von uns geführt werden, oder wird Ihre Rückkehr nicht annehmen ohne uns im Voraus.

Über uns:



Richmor

OEM & ODM Service

Brasil World Cup Supplier



Inner Training after study from Alibaba in July



Technical Training For Fast Response to Customer Richmor 锐驰曼



lecturer for Execution