

Dual SD-Karten Mobile DVR mit voller Funktion für Fahrzeug (RCM-MDR300)

Dual SD Card Mobile DVR'S-Spezifikation:

- 1.H.264 Compingression , Unterstützung 4 Video 2 Audio Eingang;
- 2.Eindopt ADI Beruflich 10 Bit Chip Video recorder Prozessor;
- 3.Support CIF, HD1 D1 Aufnahme;
4. Real Zeit Aufnahme : 100fp; Unterstützung Handy Fern monitoring;
- 5.Support 2CH D1 + 2CH CIF Real Zeit Wiedergabe;
- 6.high Kompression Verhältnis mit klar Bild;
- 7.Professional car power supply design, support 6-48V DC wide volitage input;
- 8.Unique UPS technology ensures the integrity of record when power failure occurs, even can work for 10-15sec;
- 9.Adopt professional car profile system,encrypt and protect the data;
- 10.Support GPS, G-Sensor, Gyro-Sensor Modul;
- 11.Support 3G Übertragung; WiFi Wireless Übertragung;
- 12.Support 3G Fern oil Cut-off- und Power-Off; Unterstützung lokalen und Fern PTZ control;
- 13.Record Datei Format: ASF;
- 14.Industrial design;Aluminium materials,heat-proof ,water -proof dustproof;
- 15.SD Karte Lagerung kann supprot 2pcs SD Karte;



Dual SD Card Mobile DVR'S Parameter:

System	
Prozessor / System	Hisilicon Hi3512 H.264 Hauptprofil Linux (2.6)
Sicherheit	Zwei Ebene Kennwortschutz für Administratoren und Benutzer
Video/ Audio & amp; Alarm	
Video Input / Output	Input: 4 CVBS, 1,0 Vp-p, 75Ω; Ausgang: 1 FBAS, 1,0 Vp-p, 75Ω
Standard-Video-Stream	Standard ISO14496-10
Revi-Funktion	1-Kanal oder 4-Kanal-Modus rev
Audio Input / Output	Eingang: 4-Kanal-Ausgang: 1 Kanal
Audio-Aufnahme	Mit Video synchronisiert
Audio Compression	G.726 5 KB / s
Alarm Input / Output	6 Kanäle Eingang; 1-Kanal-Ausgang

Video Recording	
Aufnahme-Auflösung	D1 / HD1 / CIF, MAX: 2 Kanäle von D1 und 2 Kanäle CIF
Aufnahmequalität	1-4 Ebenen, 1 ist die höchste Stufe und 4 ist die unterste Ebene.
Aufnahme-Modus	Standard: Auto Record. Anderen Modi: Zeiteinstellung und Alarm Record (Optional)
Rekord Lagerung	Maximale Unterstützung einer 32 GB SD-Karte und eine 2,5-Zoll-Festplatte.
Rekord Suche	Suche nach Video auf Nimm ein Rekordzeit, Aufnahmemodus und Plattenspeichergerät usw.
Rekord-Wiedergabe	Max Unterstützung 4 Kanäle Wiedergabe synchron.
Andere	
Kommunikationsschnittstelle	RS232-Schnittstelle zur Fernsteuerung; RJ45 10M / 100M Ethernet-Port.
Drahtlose Übertragung	Built-in 3G (WEVDO, CDMA200, TD-SCDMA) oder wahlweise GPRS, WIFI und EDGE
Modul	GPS und G-Sensor integrierte
Temperatur / Feuchtigkeit	Normaltemperatur: 0 ° C ~ + 50 ° C Heizung: -25 ° C ~ + 50 ° C Luftfeuchtigkeit: 20% bis 80%



AV Cables



Power Cables



IO Cables



Remote Control



WIFI Antenna



3G Antenna

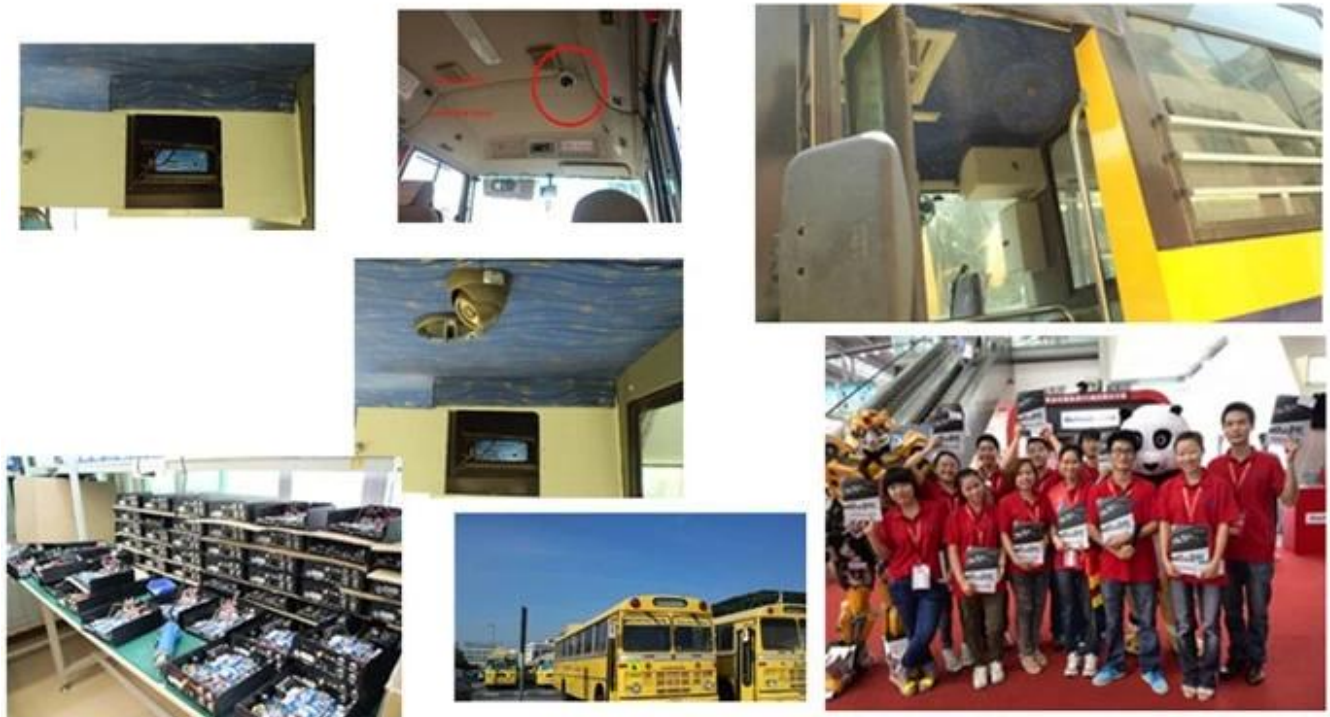


GPS Antenna



CD (Manual & Software Inside)

Leistungsstarke Software und-Hüllen:



Dual SD Card Mobile DVR'S-Zertifizierung:

VERIFICATION OF CONFORMITY

Verification of Conformity
Reference No.: L19126428272

Responsible Party : Shenzhen Rixiner Technology Development Co., LTD.
Address : #F No.41 West Longgang Road, Longgang New District, Shenzhen, China
Product : Camera
Model No. : RCM-IP1216, RCM-IP216, RCM-IP216L, RCM-IP216H, RCM-IP216S, RCM-IP216T, RCM-IP216L, RCM-IP216H, RCM-IP216S, RCM-IP216T, RCM-IP216L, RCM-IP216H, RCM-IP216S, RCM-IP216T, RCM-IP216L, RCM-IP216H, RCM-IP216S, RCM-IP216T, RCM-IP216L, RCM-IP216H, RCM-IP216S, RCM-IP216T
Trade Mark : Rixiner
Standards : FCC CFR 47 PART 15 Subpart B, 2011, ANSI C63A-2008

Request note:
This device is in compliance with Part 15 of the FCC Rules and Regulations for radio frequency devices. Operation of this product is subject to the following two conditions: (1) This device may not cause harmful interference, and (2) this device must accept any interference received, including interference that originates from authorized radio stations. Use is limited to the applicable FCC Rules and Regulations. The method of testing used is equivalent to the most accurate measurement standards possible, and that all necessary steps have been followed to detect that all production units of the same equipment will continue to comply with the Federal Communications Commission's requirements.


Manager
April 12, 2012

Shenzhen L218 Compliance Testing Laboratory Ltd.
#F, Longgang Industrial Park, Longgang Road, Longgang New District, Shenzhen, Guangdong, China
Tel: 86(755) 42291122 Fax: 86(755) 42291122
Http://www.l218.com Email: admin@l218.com

VERIFICATION OF CONFORMITY

Verification of Conformity
Reference No.: L19126428272

Responsible Party : Shenzhen Rixiner Technology Development Co., LTD.
Address : #F No.41 West Longgang Road, Longgang New District, Shenzhen, China
Product : Mobile DVR
Model No. : RCM-MD1216, RCM-MD1216L, RCM-MD1216H, RCM-MD1216S, RCM-MD1216T, RCM-MD1216L, RCM-MD1216H, RCM-MD1216S, RCM-MD1216T, RCM-MD1216L, RCM-MD1216H, RCM-MD1216S, RCM-MD1216T, RCM-MD1216L, RCM-MD1216H, RCM-MD1216S, RCM-MD1216T
Trade Mark : Rixiner
Standards : FCC CFR 47 PART 15 Subpart B, 2011, ANSI C63A-2008

Request note:
This device is in compliance with Part 15 of the FCC Rules and Regulations for radio frequency devices. Operation of this product is subject to the following two conditions: (1) This device may not cause harmful interference, and (2) this device must accept any interference received, including interference that originates from authorized radio stations. Use is limited to the applicable FCC Rules and Regulations. The method of testing used is equivalent to the most accurate measurement standards possible, and that all necessary steps have been followed to detect that all production units of the same equipment will continue to comply with the Federal Communications Commission's requirements.


Manager
April 12, 2012

Shenzhen L218 Compliance Testing Laboratory Ltd.
#F, Longgang Industrial Park, Longgang Road, Longgang New District, Shenzhen, Guangdong, China
Tel: 86(755) 42291122 Fax: 86(755) 42291122
Http://www.l218.com Email: admin@l218.com

CERTIFICATE OF CONFORMITY

CERTIFICATE of Conformity
Reference No.: L19126428272

Applicant : Shenzhen Rixiner Technology Development Co., LTD.
Address : #F No.41 West Longgang Road, Longgang New District, Shenzhen, China
Product : Mobile DVR
Model No. : RCM-MD1216, RCM-MD1216L, RCM-MD1216H, RCM-MD1216S, RCM-MD1216T, RCM-MD1216L, RCM-MD1216H, RCM-MD1216S, RCM-MD1216T, RCM-MD1216L, RCM-MD1216H, RCM-MD1216S, RCM-MD1216T, RCM-MD1216L, RCM-MD1216H, RCM-MD1216S, RCM-MD1216T
Trade Mark : Rixiner

The applicant products have been tested to be with the latest standards and found to conform with the following European Directives:
The EMC Directive 2004/108/EC
EN 55022: 2010, EN 55024: 2010

The tests were performed in normal operation mode. The test results apply only to the particular sample tested and to the specific test carried out. This certificate declares conformity to the sample investigated to our test reference number only.

The CE markings on these labels can be affixed to the product after preparation of necessary technical documentation.

Other relevant Directives have to be observed.


Manager
April 12, 2012

Shenzhen L218 Compliance Testing Laboratory Ltd.
#F, Longgang Industrial Park, Longgang Road, Longgang New District, Shenzhen, Guangdong, China
Tel: 86(755) 42291122 Fax: 86(755) 42291122
Http://www.l218.com Email: admin@l218.com

CERTIFICATE OF CONFORMITY

CERTIFICATE of Conformity
Reference No.: L19126428272

Applicant : Shenzhen Rixiner Technology Development Co., LTD.
Address : #F No.41 West Longgang Road, Longgang New District, Shenzhen, China
Product : Camera
Model No. : RCM-IP1216, RCM-IP216, RCM-IP216L, RCM-IP216H, RCM-IP216S, RCM-IP216T, RCM-IP216L, RCM-IP216H, RCM-IP216S, RCM-IP216T, RCM-IP216L, RCM-IP216H, RCM-IP216S, RCM-IP216T, RCM-IP216L, RCM-IP216H, RCM-IP216S, RCM-IP216T
Trade Mark : Rixiner

The applicant products have been tested to be with the latest standards and found to conform with the following European Directives:
The EMC Directive 2004/108/EC
EN 55022: 2010, EN 55024: 2010

The tests were performed in normal operation mode. The test results apply only to the particular sample tested and to the specific test carried out. This certificate declares conformity to the sample investigated to our test reference number only.

The CE markings on these labels can be affixed to the product after preparation of necessary technical documentation.

Other relevant Directives have to be observed.


Manager
April 12, 2012

Shenzhen L218 Compliance Testing Laboratory Ltd.
#F, Longgang Industrial Park, Longgang Road, Longgang New District, Shenzhen, Guangdong, China
Tel: 86(755) 42291122 Fax: 86(755) 42291122
Http://www.l218.com Email: admin@l218.com

CERTIFICATE OF CONFORMITY

CERTIFICATE of Conformity
Reference No.: L19126428272

When tested as specified, the applicant sample complies with the requirements of Commission Decision of 27 July 2011 amending Directive 2011/65/EU.

Applicant : Shenzhen Rixiner Technology Development Co., LTD.
Address : #F No.41 West Longgang Road, Longgang New District, Shenzhen, China
Trade Mark : Rixiner
Product : Camera
Model No. : RCM-IP1216, RCM-IP216, RCM-IP216L, RCM-IP216H, RCM-IP216S, RCM-IP216T, RCM-IP216L, RCM-IP216H, RCM-IP216S, RCM-IP216T, RCM-IP216L, RCM-IP216H, RCM-IP216S, RCM-IP216T, RCM-IP216L, RCM-IP216H, RCM-IP216S, RCM-IP216T

The test report is issued by the Company subject to its General Conditions of Service printed on this report. Attention is drawn to the limitations of liability, indemnification and jurisdiction clause on this report. This report shall only be used for the sample tested unless otherwise stated. This Test Report cannot be reproduced, stored in full, without prior written permission of the Company.

Other relevant directives have to be observed.


Manager
April 12, 2012

Shenzhen L218 Compliance Testing Laboratory Ltd.
#F, Longgang Industrial Park, Longgang Road, Longgang New District, Shenzhen, Guangdong, China
Tel: 86(755) 42291122 Fax: 86(755) 42291122
Http://www.l218.com Email: admin@l218.com

CERTIFICATE OF CONFORMITY

CERTIFICATE of Conformity
Reference No.: L19126428272

When tested as specified, the applicant sample complies with the requirements of Commission Decision of 27 July 2011 amending Directive 2011/65/EU.

Applicant : Shenzhen Rixiner Technology Development Co., LTD.
Address : #F No.41 West Longgang Road, Longgang New District, Shenzhen, China
Trade Mark : Rixiner
Product : Mobile DVR
Model No. : RCM-MD1216, RCM-MD1216L, RCM-MD1216H, RCM-MD1216S, RCM-MD1216T, RCM-MD1216L, RCM-MD1216H, RCM-MD1216S, RCM-MD1216T, RCM-MD1216L, RCM-MD1216H, RCM-MD1216S, RCM-MD1216T, RCM-MD1216L, RCM-MD1216H, RCM-MD1216S, RCM-MD1216T

The test report is issued by the Company subject to its General Conditions of Service printed on this report. Attention is drawn to the limitations of liability, indemnification and jurisdiction clause on this report. This report shall only be used for the sample tested unless otherwise stated. This Test Report cannot be reproduced, stored in full, without prior written permission of the Company.

Other relevant Directives have to be observed.

RoHS


Manager
April 12, 2012

Shenzhen L218 Compliance Testing Laboratory Ltd.
#F, Longgang Industrial Park, Longgang Road, Longgang New District, Shenzhen, Guangdong, China
Tel: 86(755) 42291122 Fax: 86(755) 42291122
Http://www.l218.com Email: admin@l218.com

Ähnliche Produkte: [PTZ-Kamera](#)
Dual SD Card Mobile DVR'S Verpackung:



Profi **Mobile DVR** Herstellung:



Richmor

OEM & ODM Service

Brasil World Cup Supplier