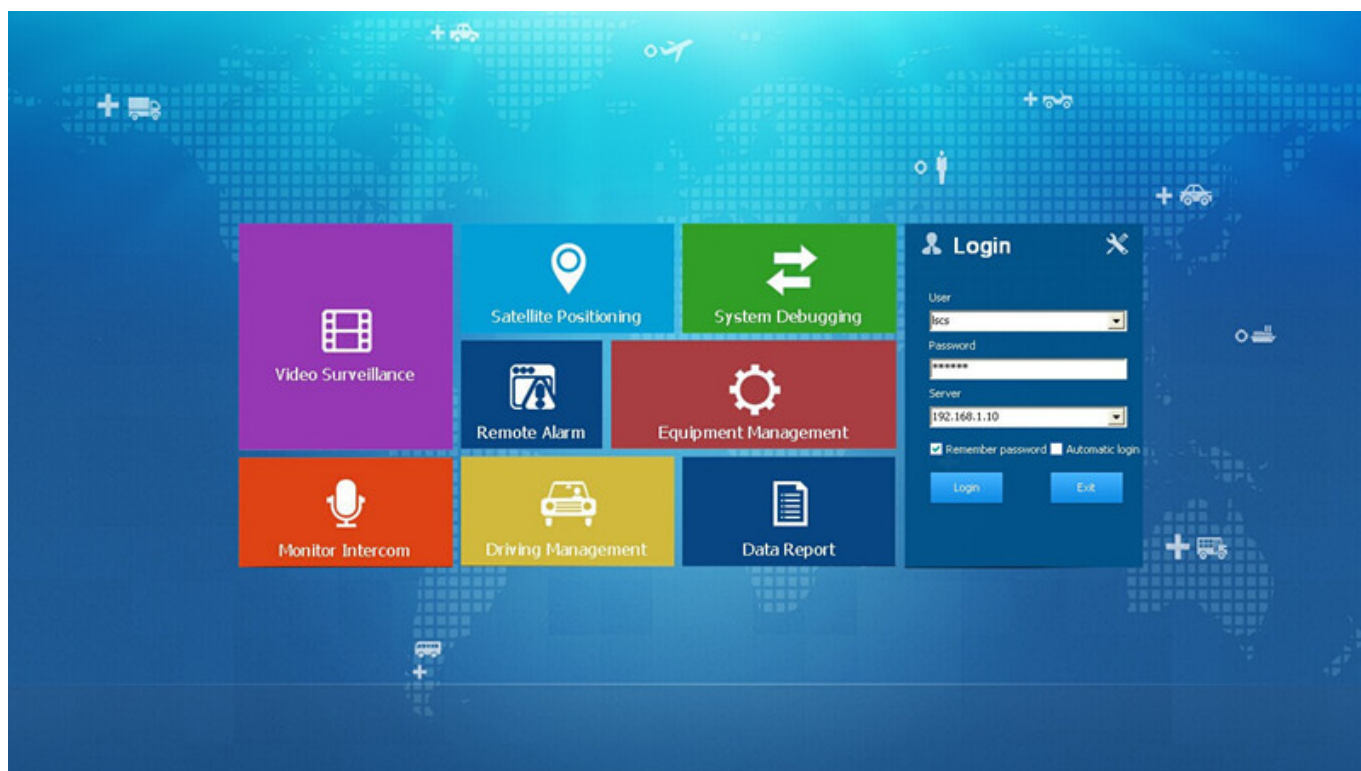


## Product Description

---



welcome to log in, rctest    religin    Video    Map    playback    System Set    Log Query

Dev List    Polling    My Map

Monitor Center(3/12)

- 80027
- 80029
- 贵D82868
- 80002
- 80004
- 80035
- 99038
- TH51
- 贵BY8156
- 贵80023
- 贵C87626
- 贵C97628

Status    PTZ    Color    VOIP

Device Type: MDVR  
 Vehicle Name: 贵D82868  
 Vehicle ID: 99057  
 Company: [Redacted]  
 Their group: Monitor Center  
 Status: Online  
 Positioning Time: 2014-12-19 11:16:24  
 Vehicle Location: [Redacted]  
 Speed: 82.40 km/h(North)  
 Costs: Normal

Map: Baidu Map

Address: Search

Monitor:12    Online:3    Alarm:0    Offline:9    Idling:0    ACC OFF:0    GPS Invalid:1    Export    Auto Sort

Device	Positioning Time	Position	Speed	Alarm
80002	2014-12-10 18:33:08	四川省宜宾市兴文县香山西路59号	1.70 km/h(North)	
贵C87626	2014-12-19 10:48:39	贵州省遵义市桐梓县崇遵高速公路	7.70 km/h(West)	
贵D82868	2014-12-19 11:16:24	贵州省遵义市遵义县	82.40 km/h(North)	
贵C97628	2014-12-17 10:58:58	贵州省遵义市桐梓县崇遵高速公路	0.00 km/h(North)	

Running: 00:02:05    Number of alarm: 0/total: 12    Online: 3 / number of set loss: 6 / Arrears: 0 / Total: 12    Line rate: 25.00% / Lost rate: 50.00%

## Mobile monitoring and management platform

Welcome to log in, rctest    System    Video    Map    Playback    System Set    Log Query    Extend App

Dev List    Polling    My Map

Monitor Center(6/12)

- 贵KY7569
- CH1
- CH2
- CH3
- CH4
- 贵KY7586
- CH1
- CH2
- CH3
- CH4
- 贵KY7599
- 贵D82868
- 贵C26562
- 贵C46446
- 80119
- 贵P5001
- 贵KY7507
- 贵80024

Status    PTZ    Color    VOIP

Device type: MDVR  
 Vehicle Name: 贵KY7586  
 Vehicle ID: 20041  
 Company: [Redacted]  
 Their Group: Monitor Center  
 Status: Online  
 Positioning Time: 2015-07-23 11:53:57  
 Location: 广西壮族自治区玉林市博白县  
 Speed: 0.00 km/h(Northeast)  
 Costs: Normal

Map: Baidu Map

Address: Search

Monitor:2    Online:2    Alarm:0    Offline:0    Idling:0    ACC OFF:0    GPS Invalid:0    Export    Auto Sort

Device	Positioning Time	Position	Speed	Alarm	Sta
贵KY7569	2015-07-23 11:53:47	广西壮族自治区玉林市博白县兴隆中路10号	0.00 km/h(West)		(On)
贵KY7586	2015-07-23 11:53:57	广西壮族自治区玉林市博白县S216	0.00 km/h(Northeast)		(On)

Running: 00:02:05    Number of alarm: 0/total: 12    Online: 6 / Number of set loss: 4 / Arrears: 0 / Total: 12    Line Rate: 50.00% / Lost Rate: 33.33%

## GPS Positioning & Overspeed Alarm

GPS data including Latitude, Longitude, and speed of vehicles will be saved along with video footages on to the SD card or hard disk, while playing the footages you can also check the the locations of your vehicles on map. Besides, alerts would be triggered while driving overspeed.



## 2TB + 128GB Large Capacity Storage

Up to 2TB hard disk & 128GB SD Card supported at the same time for saving video footages, once the disk is full, the DVR will overwrite the earlier files to make space for new files, which means you can have the DVR recording all the time to look after your vehicle.

## Alarm I/O Alarm & Alarm Recording

The DVR supports 6 I/O inputs and 1 alarm output. You can set those Inputs to record vehicle bracking, turning left/ right, door opening and more. Also, they can be simply used as a Panic Button, or work with other external sensors to trigger recording or send message to the monitor center.



# 8 CHANNEL 4G FULL D1 2TB+128GB HDD Mobile DVR

## Main Features

HIS Solution, H.264 Compression, support 8CH D1 real-time video recording ;

3CH video output (2CH CVBS video, support Front&Rear output; VGA output for optional ).

Exclusive pre-allocate File System protect data completeness, prevent SD Card fragment, ensure data stably and completely.

8-36V wide voltage with low power consumption.

Unique UPS Technology ensures the integrity of record when power failure occurs, even can for 8-10s.

HDD+SD Card Storage ( Support 2.5" HDD, max 128G SD Card) protect from Shock & Dust damage; support USB port data backup and device update;

Support 2 USB ports, data backup and device upgrade.

Support 9CH alarm input (1CH analog input + 8CH IO alarm input ), 2CH independent alarm output.

Support 2CH CAN interface.

Support HDD heating functions,can work in harsh environment.

Support GPS/BD/G-Sensor Extension module;

Realize real-time monitor through 3G/4G;

Support WIFI module, can download data automatically.

Support SMS remotely configure/control device;

Support Broadcast/Intercom/Text sent etc;can add oil sensor/temperature sensor/POS/LED Advertisement Panel;

Support voice call function.

Support OTA (On-The-Air) function, device can automatically update the new version, more convenient to maintain.

Support IOS/Android Phone Remote monitor.

## Specifications

Item	Parameter
OS	Embedded Linux
System Language	English/Chinese/Customized
Video Compression	H.264 Video Compression
OSD	Overlays information such as date time and vehicle ID
GUI	Support externally connect monitor screen. Setup system parameters with the remote control.
Graphical User Interface	
Video Input	8CH standard definition input,aviation connector, 1.0Vp-p, 75Ω
Video Output	2 CVBS output+ VGA output(Optional) , 1.0Vp-p, 75Ω,Aviation,Support 1CH Full Screen,4CH Screen,9CH screen.
Preview	Support 1 channel ,4 channels and 9 channels preview.,Support Manual/Alarm Trigger full screen preview
Resolution	D1/HD1/CIF, MAX: 8 channels D1.
Video Record System	Video Quality
	0 -7 levels, 0 is the highest level.
	PAL: 100f/s , CCIR625 line,50field;
	NTSC: 120f/s, CCIR525 line,60field;
	Video Standard
	CIF: 256Kbps ~ 1.5Mbps, 8 level video quality optional;
	HD1: 600Kbps ~ 2.5Mbps, 8 level video quality optional;
	D1: 800Kbps ~ 3Mbps, 8 level video quality optional;
	Record Mode
	The default setting is auto recording after power on. Timed recording, alarm trigger recording and manual recording are supported.

	<b>Audio Input</b>	<b>8CH Aviation Connector</b>
<b>Audio</b>	<b>Audio Output</b>	<b>2CH, headphone connect at front panel, BNC Connect on Back panel</b>
	<b>Audio Compression</b>	<b>G.726 compression format, 8kb/s</b>
<b>Alarm Input</b>		<b>7CH Alarm Input,1CH AD Input, impulse speed input,Alarm Linkage</b>
<b>Alarm Output</b>		<b>2CH alarm Output,Support Light/Sound alarm sensor,Oil/Power cut</b>
<b>Interface</b>		<b>3CH RS232, POS/Fuel Sensor/LED Advertisement Connection</b>
		<b>1CH 485 Interface,Connect PTZ Camera</b>
<b>Wireless</b>		<b>Support Built in 3G transmission,, WCDMA, CDMA2000,GPRS, EDGE;</b>
<b>GPS</b>		<b>Built in 4G module optional, TDD-LTE, FDD-LTE</b>
		<b>Support GPS</b>
	<b>HDD</b>	<b>Max 2.5" 2TB HDD</b>
	<b>SD</b>	<b>Max 128GB SD Card Mirror Recording Keep Data Safety</b>
<b>Storage</b>	<b>Updating</b>	<b>Support USB Updating, SD Card Updating,OTA Remote Updating</b>
	<b>File Format</b>	<b>0.264</b>
	<b>File System</b>	<b>Special FAT32 File System</b>
	<b>USB</b>	<b>USB Interface on Front Panel for data back up by U Disk,Hard Disk</b>
	<b>Video Search</b>	<b>Search By Record Time/Record Type etc</b>
<b>Video Replay</b>		<b>Max support 4CH Replay /Stop/Fast/Slow at same time</b>
	<b>Playback</b>	<b>Support forward and backward play at the speed of: x 2,x4,x8,x16</b>
	<b>Power Management</b>	<b>Wide Voltage.Support Timed/Delay off</b>
<b>Power Consumption</b>	<b>Voltage Input</b>	<b>DC:+6V ~ +36V</b>
	<b>Voltage Output</b>	<b>+12V-2.5A,+5V-2.5A</b>
	<b>Power</b>	<b>Working &lt;5W</b>
<b>Working Environment</b>	<b>Temperature</b>	<b>-20°C to +70°C</b>
	<b>Humidity</b>	<b>20% to 80%</b>
<b>Security</b>	<b>Password</b>	<b>User/Admin 2 Level Different Password</b>
<b>Other</b>	<b>Size</b>	<b>200 (D)* 187(W)* 62(H) mm</b>
	<b>Net Weight</b>	<b>1.90 Kg</b>
<b>Optional Functions</b>	<b>Voice Call</b>	<b>Support voice call each other</b>
	<b>TTS Voice Broadcast</b>	<b>Support TTS voice broadcast function.</b>
<b>Option</b>	<b>Serial Expand</b>	<b>Support LED Advertisement Panel,Oil Sensor,POS,Bus Station Broadcaster,Car OBD,ect. external device</b>

## **Our Services**

---



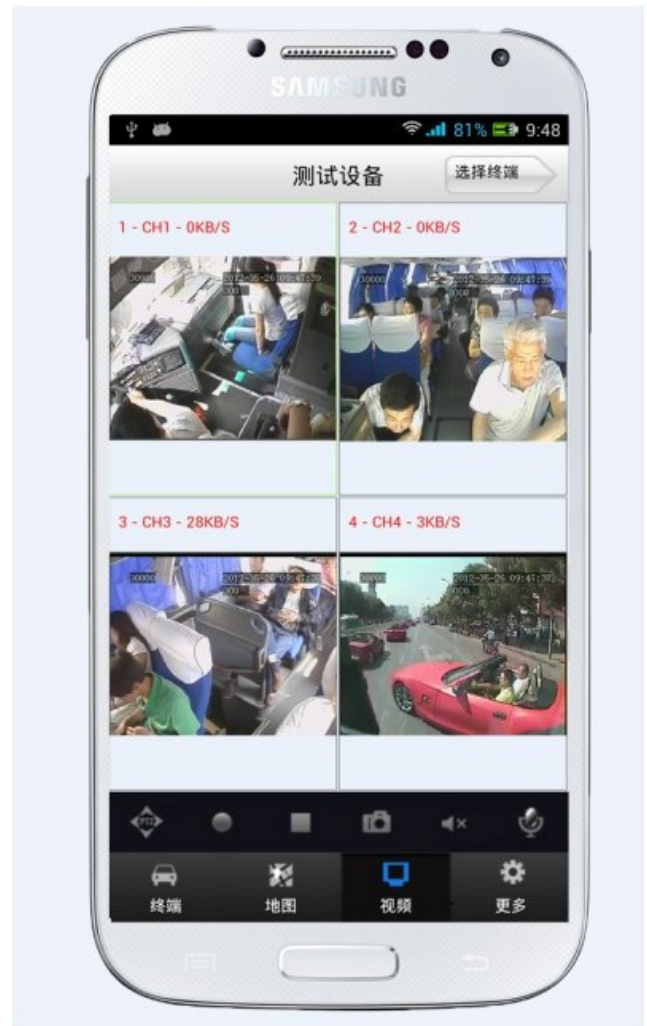


PC&Phone Monitoring

## CMSV6 Interface

# hand CMSV6 In Mobile Phone Have all in the palm of your

Real-time monitoring via Mobile Phone  
Support iPhone, Android, iPad system



Video & Audio Monitoring    Online Vehicle    GPS

Satellite Map    Video Storage

PTZ control    Tracking Display

Picture Snapshot

Voice intercom

## FQA

Q: During playback, the map doesn't show?

A: Possible reasons are as follows;

- 1.Net cable did not connect to PC;
- 2.Net works, but the computer can not get to the Internet;

Q: When SD card and HDD records, How is the record coverage?

A: SD card and HDD will record circularly for each other. When they are full, they will delete the original video records respectively.

Q: The device was opened, HDD was installed, but the device can not record successful.

A: 1.Check the HDD/SD Card was formatted or not, the unformatted HH/SD Card can not be used. Enter into the Main Menu - System Setup - Formatting the new installed HDD/SD Card.

2. If the recording channel is closed, if set the timing recording, it can not recording when it beyond the period of timing recording.

3. If the HDD is connect well, if the HDD/SD light is on.



Richmor Brand Package



Standard Package



## CAMERA Accessory





## ***Shipping***

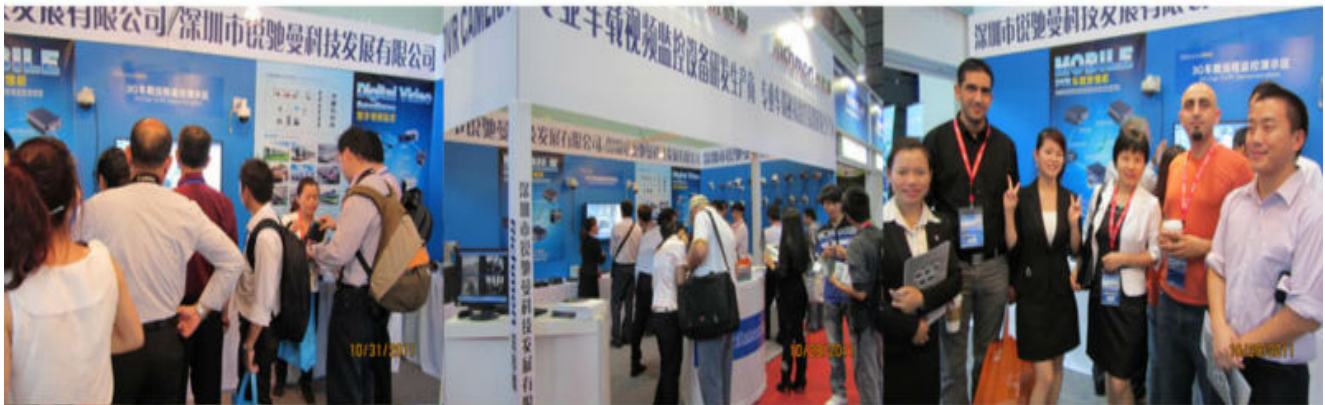
***Strong cooperated with DHL/UPS Etc for fast and safety delivery.***

***a. 2-5 days after payment cleared for sample order.***

***b. 5-10 days after payment cleared depends on order quantity for bulk order.***



**Exhibition**



CPSE2013

10.29-10.31

4 Booth we have

Welcome you !!!



## CPSE2012-- Guangdong TV Report-Shenzhen Richmor





**VERIFICATION OF CONFORMITY**

**Verification of Conformity**  
Reference No.: LC1310402017

**Responsible Party** : Shenzhen Rixiner Technology Development Co., LTD.  
**Address** : 2F No.43 West Longgang Road, Longgang New District, Shenzhen, China  
**Product** : Camera  
**Model No.** : RCM-PC216, RCM-PC218, RCM-PC219, RCM-PC216, RCM-PC218, RCM-PC219, RCM-PC216, RCM-PC218, RCM-PC219, RCM-PC216, RCM-PC218, RCM-PC219, RCM-PC216, RCM-PC218, RCM-PC219, RCM-PC216, RCM-PC218, RCM-PC219  
**Trade Mark** : Rixiner  
**Standard** : FCC CFR 47 PART 15 Subpart B, 2011, ANSI C63A-2008

**Required info:**  
This device is in accordance with Part 15 of the FCC Rules and Regulations for radio frequency devices. Operation of this product is subject to the following two conditions:  
(1) this device may not cause harmful interference, and (2) this device must accept any interference received, including interference that may cause undesired operation.  
We tested to confirm to the applicable FCC Rules and Regulations. The method of testing was in accordance to the most accurate measurement standards possible, and that all necessary steps have been followed to assure that all production units of the same equipment will continue to comply with the Federal Communications Commission's requirements.

  
Manager  
April 16, 2013

Shenzhen LCC Compliance Testing Laboratory Ltd.  
17, Angang Industrial Park, Tingle Road, Bao'an Dist., Bao'an District, Shenzhen, Guangdong, China  
Tel: 86(755) 42291132 Fax: 86(755) 42291132  
Http://www.LCC-test.com Email: info@lcc-test.com

**VERIFICATION OF CONFORMITY**

**Verification of Conformity**  
Reference No.: LC1310402017

**Responsible Party** : Shenzhen Rixiner Technology Development Co., LTD.  
**Address** : 2F No.43 West Longgang Road, Longgang New District, Shenzhen, China  
**Product** : Mobile DVR  
**Model No.** : RCM-MD308, RCM-MD309, RCM-MD310, RCM-MD308, RCM-MD309, RCM-MD310, RCM-MD308, RCM-MD309, RCM-MD310, RCM-MD308, RCM-MD309, RCM-MD310, RCM-MD308, RCM-MD309, RCM-MD310, RCM-MD308, RCM-MD309, RCM-MD310  
**Trade Mark** : Rixiner  
**Standard** : FCC CFR 47 PART 15 Subpart B, 2011, ANSI C63A-2008

**Required info:**  
This device is in accordance with Part 15 of the FCC Rules and Regulations for radio frequency devices. Operation of the product is subject to the following two conditions:  
(1) this device may not cause harmful interference, and (2) this device must accept any interference received, including interference that may cause undesired operation.  
We tested to confirm to the applicable FCC Rules and Regulations. The method of testing was in accordance to the most accurate measurement standards possible, and that all necessary steps have been followed to assure that all production units of the same equipment will continue to comply with the Federal Communications Commission's requirements.

  
Manager  
April 16, 2013

Shenzhen LCC Compliance Testing Laboratory Ltd.  
17, Angang Industrial Park, Tingle Road, Bao'an Dist., Bao'an District, Shenzhen, Guangdong, China  
Tel: 86(755) 42291132 Fax: 86(755) 42291132  
Http://www.LCC-test.com Email: info@lcc-test.com

**CERTIFICATE OF CONFORMITY**

**CERTIFICATE of Conformity**  
Reference No.: LC1310402017

**Applicant** : Shenzhen Rixiner Technology Development Co., LTD.  
**Address** : 2F No.43 West Longgang Road, Longgang New District, Shenzhen, China  
**Product** : Mobile DVR  
**Model No.** : RCM-MD308, RCM-MD309, RCM-MD310, RCM-MD308, RCM-MD309, RCM-MD310, RCM-MD308, RCM-MD309, RCM-MD310, RCM-MD308, RCM-MD309, RCM-MD310, RCM-MD308, RCM-MD309, RCM-MD310  
**Trade Mark** : Rixiner

The submitted products have been tested by us with the latest standards and found in compliance with the following European Directives:  
**The EMC Directive 2004/108/EC**  
**EN 55022: 2012, EN 55024: 2010**  
The tests were performed in normal operation mode. The test results apply only to the particular sample tested and to the specific tests carried out. This certificate applies specifically to the sample investigated in our test reference number only.  
The CE markings as shown below can be affixed to the product after presentation of necessary technical documentation.  
Other relevant Directives have to be observed.

**CE**

  
Manager  
April 16, 2013

Shenzhen LCC Compliance Testing Laboratory Ltd.  
17, Angang Industrial Park, Tingle Road, Bao'an Dist., Bao'an District, Shenzhen, Guangdong, China  
Tel: 86(755) 42291132 Fax: 86(755) 42291132  
Http://www.LCC-test.com Email: info@lcc-test.com

**CERTIFICATE OF CONFORMITY**

**CERTIFICATE of Conformity**  
Reference No.: LC1310402017

**Applicant** : Shenzhen Rixiner Technology Development Co., LTD.  
**Address** : 2F No.43 West Longgang Road, Longgang New District, Shenzhen, China  
**Product** : Camera  
**Model No.** : RCM-PC216, RCM-PC218, RCM-PC219, RCM-PC216, RCM-PC218, RCM-PC219, RCM-PC216, RCM-PC218, RCM-PC219, RCM-PC216, RCM-PC218, RCM-PC219, RCM-PC216, RCM-PC218, RCM-PC219, RCM-PC216, RCM-PC218, RCM-PC219  
**Trade Mark** : Rixiner

The submitted products have been tested by us with the latest standards and found in compliance with the following European Directives:  
**The EMC Directive 2004/108/EC**  
**EN 55022: 2012, EN 55024: 2010**  
The tests were performed in normal operation mode. The test results apply only to the particular sample tested and to the specific tests carried out. This certificate applies specifically to the sample investigated in our test reference number only.  
The CE markings as shown below can be affixed to the product after presentation of necessary technical documentation.  
Other relevant Directives have to be observed.

**CE**

  
Manager  
April 16, 2013

Shenzhen LCC Compliance Testing Laboratory Ltd.  
17, Angang Industrial Park, Tingle Road, Bao'an Dist., Bao'an District, Shenzhen, Guangdong, China  
Tel: 86(755) 42291132 Fax: 86(755) 42291132  
Http://www.LCC-test.com Email: info@lcc-test.com

**CERTIFICATE OF CONFORMITY**

**CERTIFICATE of Conformity**  
Reference No.: LC1310402017

**Applicant** : Shenzhen Rixiner Technology Development Co., LTD.  
**Address** : 2F No.43 West Longgang Road, Longgang New District, Shenzhen, China  
**Trade Mark** : Rixiner  
**Product** : Camera  
**Model No.** : RCM-PC216, RCM-PC218, RCM-PC219, RCM-PC216, RCM-PC218, RCM-PC219, RCM-PC216, RCM-PC218, RCM-PC219, RCM-PC216, RCM-PC218, RCM-PC219, RCM-PC216, RCM-PC218, RCM-PC219, RCM-PC216, RCM-PC218, RCM-PC219

The test report is issued by the Company subject to its General Conditions of Service printed hereon. Inspection is done to the limitation of facility, identification and judgemental error allowed herein. The results shown in this test report refer only to the samples tested unless otherwise stated. This Test Report cannot be reproduced, except in full, without prior written permission of the Company.  
Other relevant directives have to be observed.

**RoHS**

  
Manager  
April 16, 2013

Shenzhen LCC Compliance Testing Laboratory Ltd.  
17, Angang Industrial Park, Tingle Road, Bao'an Dist., Bao'an District, Shenzhen, Guangdong, China  
Tel: 86(755) 42291132 Fax: 86(755) 42291132  
Http://www.LCC-test.com Email: info@lcc-test.com

**CERTIFICATE OF CONFORMITY**

**CERTIFICATE of Conformity**  
Reference No.: LC1310402017

**Applicant** : Shenzhen Rixiner Technology Development Co., LTD.  
**Address** : 2F No.43 West Longgang Road, Longgang New District, Shenzhen, China  
**Trade Mark** : Rixiner  
**Product** : Mobile DVR  
**Model No.** : RCM-MD308, RCM-MD309, RCM-MD310, RCM-MD308, RCM-MD309, RCM-MD310, RCM-MD308, RCM-MD309, RCM-MD310, RCM-MD308, RCM-MD309, RCM-MD310, RCM-MD308, RCM-MD309, RCM-MD310

The test report is issued by the Company subject to its General Conditions of Service printed hereon. Inspection is done to the limitation of facility, identification and judgemental error allowed herein. The results shown in this test report refer only to the samples tested unless otherwise stated. This Test Report cannot be reproduced, except in full, without prior written permission of the Company.  
Other relevant directives have to be observed.

**RoHS**

  
Manager  
April 16, 2013

Shenzhen LCC Compliance Testing Laboratory Ltd.  
17, Angang Industrial Park, Tingle Road, Bao'an Dist., Bao'an District, Shenzhen, Guangdong, China  
Tel: 86(755) 42291132 Fax: 86(755) 42291132  
Http://www.LCC-test.com Email: info@lcc-test.com

**Skype:rcmctvsales5**