

# Portable Digital Video Recorder Polizei Personal

Modell: RCM-SP5800

## Hauptmerkmal:

1. Beweglicher DVR für Personal
2. Unterstützung WIFI, 3G, GPS-Funktion
3. Unterstützung Echtzeit-Überwachung
4. unterstützt SD von Tagen überschrieben
5. unterstützt Backup und Upgrade mit SD-Karte
6. Selbst recovery nach Stromausfall

## Bilder:



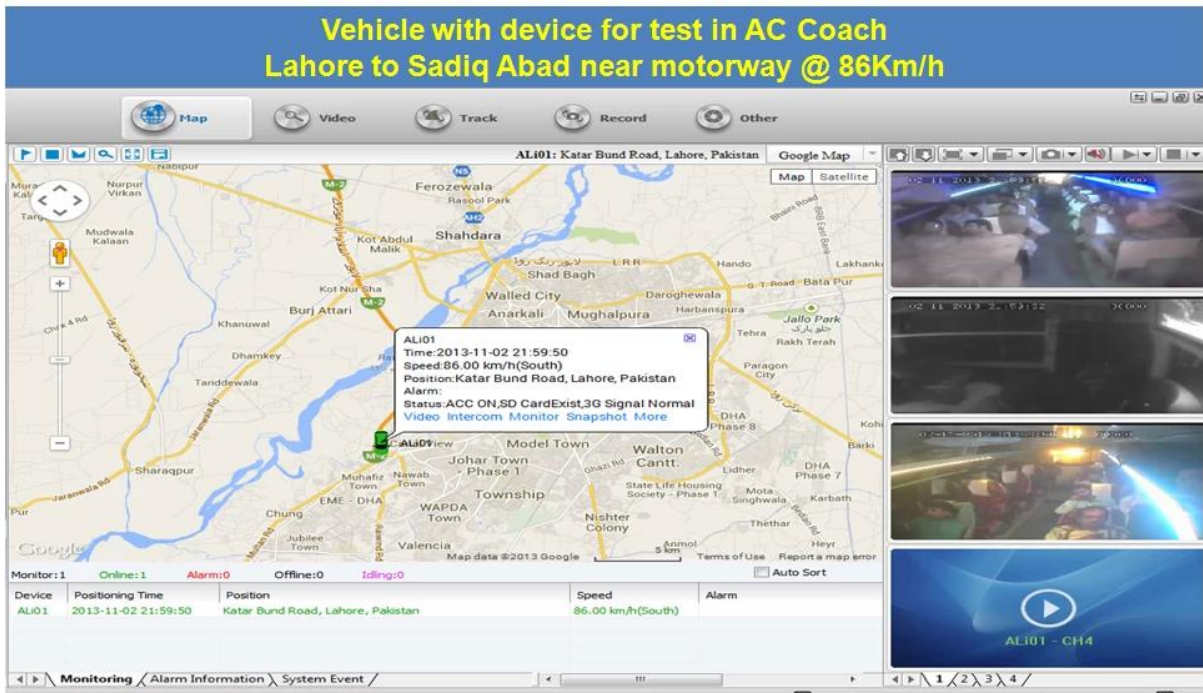


### Spezifikation:

Artikel	Geräteparameter	Performance-Index
<b>System</b>	Betriebssystem	Linux
	Separate Design	Hauptgerät: Arbeit & nbsp; unabhängig örtlichen Platten & nbsp; verwirklichen; Zusatzeinrichtung: & nbsp; GPS / 3G, Backup-Batterie
	Grafik Betriebssystem	Benutzen Sie die Tasten, um die komplette Einstellung verschiedener Parameter
	Sicherheitsmanagement	Benutzer-Passwort-Management
<b>Video</b>	Video-Eingang	Eingebaute Kamera, Winkel Sichtbarkeit: 70 °, CMOS-Sensor
	OSD	Time & amp; Datum, Geräte-ID, GPS usw.
	Kompression	H.264. Hisilicon Hoch Leistungsprozessor angenommen wird.
	Video-Auflösung	VGA standardmäßig, QVGA fakultativ
	Video-Bitrate QVGA	QVGA: 400kbps ~ 1,5 Mbps, 4 Ebenen der Bitrate optional
	Video-Bitrate VGA	VGA: 1000kbps ~ 2 Mbps, 4 Ebenen der Bitrate optional
	Vorschau-Funktion	Echtzeit, Video aufnehmen Vorschau
	Dual-Stream	Unterstützung

<b>Audio-</b>	Audio-Eingang	Integriertem Mikrofon
	Audio-Ausgang	Eingebauter Lautsprecher, & gt; 1W
	Kompression	G.726
<b>Aufnahme</b>	Speichermedien	Micro-SD-Karte, Unterstützung 1G ~ 32G
	Dateiformat / System	ASF Rekord-Dateiformat, FAT32-Dateisystem
	Aufnahmemodus	Startup Aufnahme von Standardmäßig unterstützt die manuelle Aufnahme
	Aufzeichnung Suche	Suche Aufnahme von Videodateien nach Zeit, Typ, etc.
	Aufnahme Wiedergabe	Stützen schnell vorwärts, schnell rückwärts, Play, Pause, Unterstützung 2, 4, 8, 16 Mal beschleunigen schnell vorwärts oder rückwärts, unterstützt die Wiedergabe von Dateien von der Zeit
<b>USB Schnittstelle</b>	Gastgeber Zugang	Kann man für USB Disk erweitern Sicherungskopie
<b>Netzwerkschnittstelle</b>	Funkübertragung	Built-in 3G-Wireless- Übertragungsmodul, WCDMA, CDMA2000, TD-SCDMA-System optional; Kompatibel mit GPRS, EDGE;
<b>Erweitern Schnittstelle</b>	Gegensprechanlage	Können Intercom-Modul erweitern Innen
<b>Bildschirmparameter</b>	Größe	2,4-Zoll-
	Art	TFT
	Auflösung	480 * 234
<b>Upgrade</b>	System-Upgrade	Unterstützung Micro-SD-Karte Upgrade
<b>Arbeitsumgebung</b>	Temperatur	-20 ° C ~ 50 ° C
	Luftfeuchtigkeit	20% bis 80%
<b>Dimension</b>	Hauptgerät	50 (W) x90 (H) x28 (D) mm
	Hilfsvorrichtung	70 (W) x110 (H) x28 (T) mm
<b>Gewicht</b>	Hauptgerät	Nettogewicht: 95g, Gross Gewicht: 307.5g
	Hilfsvorrichtung	Nettogewicht: 238g, Brutto Gewicht: 352g

### **Unsere CMS-Software-Anwendung:**



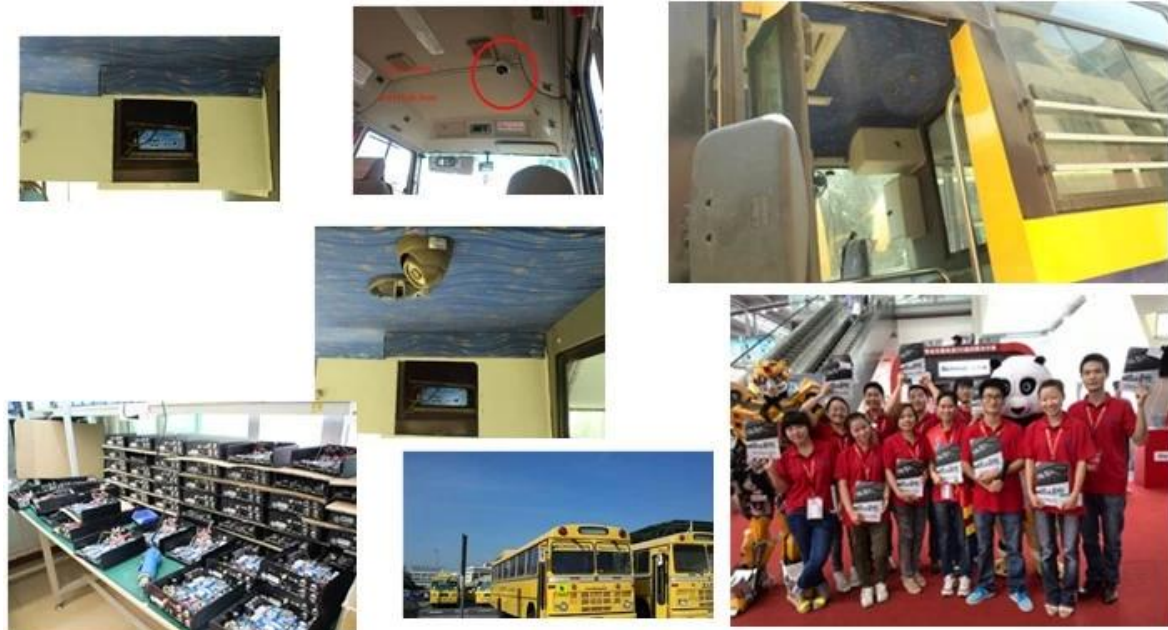
**Für Windows-PC Echtzeit-Überwachung**

**Für IOS & Android OS Handy Surveillance**



**Unsere Mobile DVR-Projekt für Fahrzeuge**





**Zertifizierung:**

<b>VERIFICATION OF CONFORMITY</b>	<p><b>Verification of Conformity</b> Reference No.: L131304029719</p> <p>Responsible Party: Shenzhen Reaktor Technology Development Co., LTD. Address: 27 No.44 West Longgang Road, Longhua New District, Shenzhen, China Product: Camera Models: RCM-PC20L, RCM-PC20L, RCM-LP20L, RCM-PC20L, RCM-AP20L, RCM-AP20L, RCM-30L, RCM-30L, RCM-40L, RCM-40L, RCM-50L, RCM-50L, RCM-60L, RCM-60L, RCM-70L, RCM-70L, RCM-80L, RCM-80L, RCM-90L, RCM-90L Trade Mark: Reaktor Standards: FCC CFR 47 PART 15 Subpart B, 2011, ANSI C63.4-2008</p> <p><b>Important note:</b> This device is in compliance with Part 15 of the FCC Rules and Regulations for radio frequency devices. Operation of the product is subject to the following two conditions: (1) This device may not cause harmful interference, and (2) this device must accept any interference received, including interference that may cause undesired operation. The EMC Directive 2014/53/EU EN 55032: 2015, EN 55034: 2015 The test was performed in normal operation mode. The test results apply only to the particular sample tested and to the specific test carried out. This certificate applies specifically to the sample investigated in our test reference number only. The CE marking as shown below can be affixed to the product after presentation of necessary technical documentation. Clear relevant directives have to be observed.</p> <p>Shenzhen LCC Compliance Testing Laboratory Ltd. 17, Angang Industrial Park, Tangxia Road, Bao'an District, Shenzhen, Guangdong, China Tel: 86755-82911132 Fax: 86755-82911133 http://www.lcc-test.com Email: admin@lcc-test.com</p>	<b>VERIFICATION OF CONFORMITY</b>	<p><b>Verification of Conformity</b> Reference No.: L131304029719</p> <p>Responsible Party: Shenzhen Reaktor Technology Development Co., LTD. Address: 27 No.44 West Longgang Road, Longhua New District, Shenzhen, China Product: Media DVR Models: RCM-M200L, RCM-M200L, RCM-M200L, RCM-M200L, RCM-M200L, RCM-M200L, RCM-M200L, RCM-M200L Trade Mark: Reaktor Standards: FCC CFR 47 PART 15 Subpart B, 2011, ANSI C63.4-2008</p> <p><b>Important note:</b> This device is in compliance with Part 15 of the FCC Rules and Regulations for radio frequency devices. Operation of the product is subject to the following two conditions: (1) This device may not cause harmful interference, and (2) this device must accept any interference received, including interference that may cause undesired operation. The EMC Directive 2014/53/EU EN 55032: 2015, EN 55034: 2015 The test was performed in normal operation mode. The test results apply only to the particular sample tested and to the specific test carried out. This certificate applies specifically to the sample investigated in our test reference number only. The CE marking as shown below can be affixed to the product after presentation of necessary technical documentation. Clear relevant directives have to be observed.</p> <p>Shenzhen LCC Compliance Testing Laboratory Ltd. 17, Angang Industrial Park, Tangxia Road, Bao'an District, Shenzhen, Guangdong, China Tel: 86755-82911132 Fax: 86755-82911133 http://www.lcc-test.com Email: admin@lcc-test.com</p>	<b>CERTIFICATE OF CONFORMITY</b>	<p><b>CERTIFICATE OF CONFORMITY</b> Reference No.: L131304029719</p> <p>Applicant: Shenzhen Reaktor Technology Development Co., LTD. Address: 27 No.44 West Longgang Road, Longhua New District, Shenzhen, China Product: Media DVR Models: RCM-M200L, RCM-M200L, RCM-M200L, RCM-M200L, RCM-M200L, RCM-M200L, RCM-M200L, RCM-M200L Trade Mark: Reaktor Standards: FCC CFR 47 PART 15 Subpart B, 2011, ANSI C63.4-2008</p> <p>The EMC Directive 2014/53/EU EN 55032: 2015, EN 55034: 2015 The test was performed in normal operation mode. The test results apply only to the particular sample tested and to the specific test carried out. This certificate applies specifically to the sample investigated in our test reference number only. The CE marking as shown below can be affixed to the product after presentation of necessary technical documentation. Clear relevant directives have to be observed.</p> <p>Shenzhen LCC Compliance Testing Laboratory Ltd. 17, Angang Industrial Park, Tangxia Road, Bao'an District, Shenzhen, Guangdong, China Tel: 86755-82911132 Fax: 86755-82911133 http://www.lcc-test.com Email: admin@lcc-test.com</p>

<b>CERTIFICATE OF CONFORMITY</b>	<p><b>CERTIFICATE of Conformity</b> Reference No.: L131304029719</p> <p>Applicant: Shenzhen Reaktor Technology Development Co., LTD. Address: 27 No.44 West Longgang Road, Longhua New District, Shenzhen, China Product: Camera Models: RCM-PC20L, RCM-PC20L, RCM-LP20L, RCM-PC20L, RCM-AP20L, RCM-AP20L, RCM-30L, RCM-30L, RCM-40L, RCM-40L, RCM-50L, RCM-50L, RCM-60L, RCM-60L, RCM-70L, RCM-70L, RCM-80L, RCM-80L, RCM-90L, RCM-90L Trade Mark: Reaktor Standards: FCC CFR 47 PART 15 Subpart B, 2011, ANSI C63.4-2008</p> <p>The EMC Directive 2014/53/EU EN 55032: 2015, EN 55034: 2015 The test was performed in normal operation mode. The test results apply only to the particular sample tested and to the specific test carried out. This certificate applies specifically to the sample investigated in our test reference number only. The CE marking as shown below can be affixed to the product after presentation of necessary technical documentation. Clear relevant directives have to be observed.</p> <p>Shenzhen LCC Compliance Testing Laboratory Ltd. 17, Angang Industrial Park, Tangxia Road, Bao'an District, Shenzhen, Guangdong, China Tel: 86755-82911132 Fax: 86755-82911133 http://www.lcc-test.com Email: admin@lcc-test.com</p>	<b>CERTIFICATE OF CONFORMITY</b>	<p><b>CERTIFICATE of Conformity</b> Reference No.: L131304029719</p> <p>When tested as specified, the submitted sample complies with the requirements of Commission Decision of 27 July 2011 amending Directive 2011/65/EU. Applicant: Shenzhen Reaktor Technology Development Co., LTD. Address: 27 No.44 West Longgang Road, Longhua New District, Shenzhen, China Trade Mark: Reaktor Product: Camera Models: RCM-PC20L, RCM-PC20L, RCM-LP20L, RCM-PC20L, RCM-AP20L, RCM-AP20L, RCM-30L, RCM-30L, RCM-40L, RCM-40L, RCM-50L, RCM-50L, RCM-60L, RCM-60L, RCM-70L, RCM-70L, RCM-80L, RCM-80L, RCM-90L, RCM-90L Standards: RoHS The test result is issued by the Company subject to the General Conditions of Service printed on our website. The results shown in this test report refer only to the particular tested sample unless otherwise stated. This Test Report cannot be reproduced in any form without prior written permission of the Company. Clear relevant directives have to be observed.</p> <p>Shenzhen LCC Compliance Testing Laboratory Ltd. 17, Angang Industrial Park, Tangxia Road, Bao'an District, Shenzhen, Guangdong, China Tel: 86755-82911132 Fax: 86755-82911133 http://www.lcc-test.com Email: admin@lcc-test.com</p>	<b>CERTIFICATE OF CONFORMITY</b>	<p><b>CERTIFICATE of Conformity</b> Reference No.: L131304029719</p> <p>When tested as specified, the submitted sample complies with the requirements of Commission Decision of 27 July 2011 amending Directive 2011/65/EU. Applicant: Shenzhen Reaktor Technology Development Co., LTD. Address: 27 No.44 West Longgang Road, Longhua New District, Shenzhen, China Trade Mark: Reaktor Product: Media DVR Models: RCM-M200L, RCM-M200L, RCM-M200L, RCM-M200L, RCM-M200L, RCM-M200L, RCM-M200L, RCM-M200L Standards: RoHS The test report is issued by the Company subject to the General Conditions of Service printed on our website. The results shown in this test report refer only to the particular tested sample unless otherwise stated. This Test Report cannot be reproduced in any form without prior written permission of the Company. Clear relevant directives have to be observed.</p> <p>Shenzhen LCC Compliance Testing Laboratory Ltd. 17, Angang Industrial Park, Tangxia Road, Bao'an District, Shenzhen, Guangdong, China Tel: 86755-82911132 Fax: 86755-82911133 http://www.lcc-test.com Email: admin@lcc-test.com</p>

**Ähnliche Produkte:**



SD Mobile DVR with 3G GPS

SD Mobile DVR with WIFI 3G GPS G-Sensor

**Zusammenarbeit Ausdrücke:**

**Zahlungsbedingungen:** T / T, Western Union, Moneygram, Paypal

**Lieferzeit:** Innerhalb von 5 Werktagen nach die Zahlung bestätigen.

**Garantie:** 12 Monate

**Liefer-Weg:** DHL, UPS, Fedex, EMS, TNT etc.

**Verpackungsweisen:**



Richmor Brand Package



Standard Package

**After-Sales-Service:**

1. Nach Sie erhalten unsere Produkte, wir helfen Ihnen zu erkennen, wie man es benutzt.
2. Angebot Sie die Software, wenn Sie unsere mobile DVR verwenden.
3. Zwölf Monate Garantie
4. Während unsere Garantie, wenn Sie irgendein Problem haben, können wir Ihnen helfen, es zu lösen.
5. Während unsere Garantie, können Sie an uns zurückschicken, um es zu reparieren.

**Bemerkung: Alle qualifizierten Renditen / Ersatz müssen von uns geführt werden, oder wird Ihre Rückkehr nicht annehmen ohne uns im Voraus.**

**Über uns:**





# Richmor

## OEM & ODM Service

### Brasil World Cup Supplier



Inner Training after study from Alibaba in July



Technical Training For Fast Response to Customer Richmor 锐驰曼



lecturer for Execution