

Richmor 3G GPS WIFI Vozidlo Mobile DVR rekordér Vestavěný modul GPS (Google Map) Podpora IOS / Android Monitor

RCM-MDR7001WSG

Hlavní funkce:

1. 4-kanálové HD & SD karta Mobilní DVR
2. Podpora 3G, GPS, WIFI, G-senzor, funkce UPS
3. Podporuje dálkové ovládání PTZ
4. Podpora sledování v reálném čase
5. Podporuje přepsání HD dnů
6. Podporuje zálohování a upgrade pomocí HD & SD karta
7. Vlastní rekordér po opětovném připojení k síti
8. Stabilní konstrukce z hliníkové slitiny s tlumičem nárazů

Obrázky:

DV rekordér HD vozidel se 4 g gps





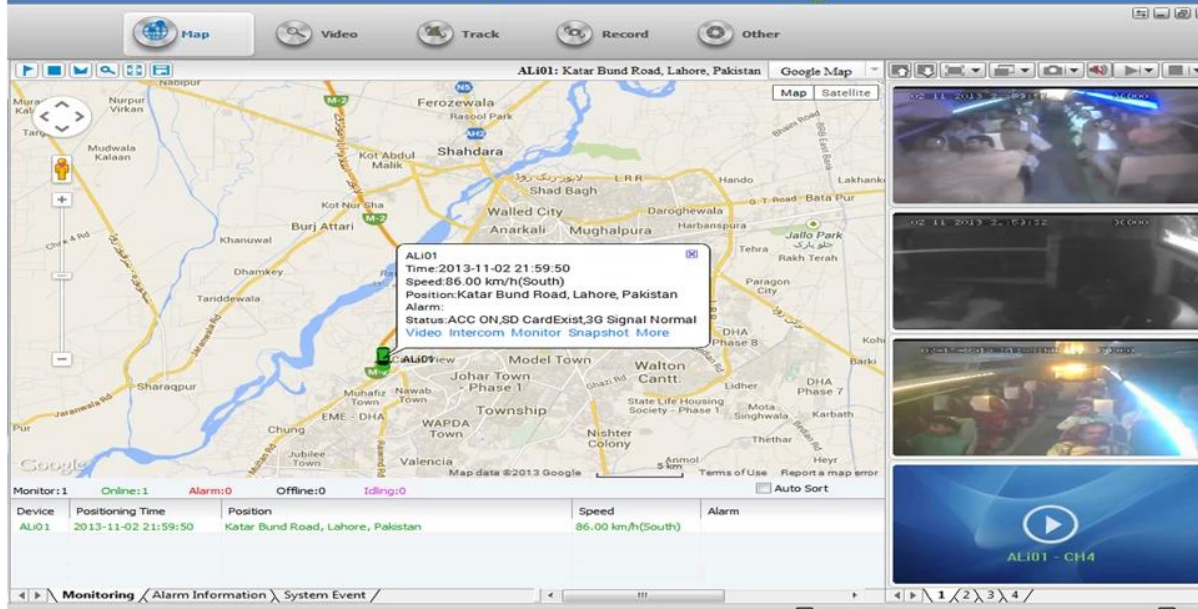
[4CH HD Car DVR na prodej](#)

Specifikace:

Položky	Parametry zařízení	Index výkonu
název	jméno výrobku	4kanálový mobilní DVR (HDD a SD paměť)
System	Operační systém	Linux
	Provozní rozhraní	Grafické rozhraní, čínština / angličtina volitelně
	Souborový systém	Vlastní formát
	Systémové oprávnění	Uživatelské heslo

Video	Video vstup	4k SDI nezávislý vstup: 1.0Vp-p, 75Ω.Both B & W a barevné kamery
	Video výstup	1 kanál PAL / NTSC výstup, 1.0Vp-p, 75Ω, kompozitní video signál
	Video displej	1 nebo 4 zobrazení na obrazovce
	Standardní video	PAL: 25 snímků / s; NTSC: 30 snímků / s
	Systémové prostředky	PAL: 100 rámců; NTSC: 120 snímků
Zvuk	Audio vstup	Čtyřkanálový nezávislý vstup 500Ω
	Audio výstup	1 kanál (4 kanály lze libovolně převést)
	Základní výstupní úroveň	1,0-2,2V
	Distortion Plus Noise	≤-30dB
	Režim záznamu	Synchronizace zvuku a obrazu
	Kompresce zvuku	ADPCM
Poplach	Alarm in	Nezávislý vstup 6 kanálů. Spouštění vysokého napětí
	Vypnutí alarmu	1 kanál Nezávislý výstup
	Přesunout detekci	dostupný
Sít Rozhraní	Přístup k kabelovému vedení	Může rozšířit jeden port Ethernet RJ45
	Wifi	Může rozšířit jeden modul Wifi uvnitř
	3G	Může rozšířit jeden modul WCDMA nebo CDMA2000 uvnitř
Rozhraní GPS	GPS	Může GPS modul rozbalit venku
Rozšířte rozhraní	Interkom	Může rozšiřovat interkomunikační modul uvnitř
	G-Sensor	Může rozšiřovat modul G-Sensor uvnitř
Ostatní	Spotřeba energie	DC8-36V 5% ≤ 10W
	Pracovní teplota	-20 °C ~ + 85 °C ≤80%
	Hodiny	Vestavěné hodiny, kalendář
Obal	Velikost produktu	200 (L) * 160 (Š) * 62 (H) mm (s držákem)
	Hmotnost výrobku	2.2KG (bez HDD)

Vehicle with device for test in AC Coach Lahore to Sadiq Abad near motorway @ 86Km/h

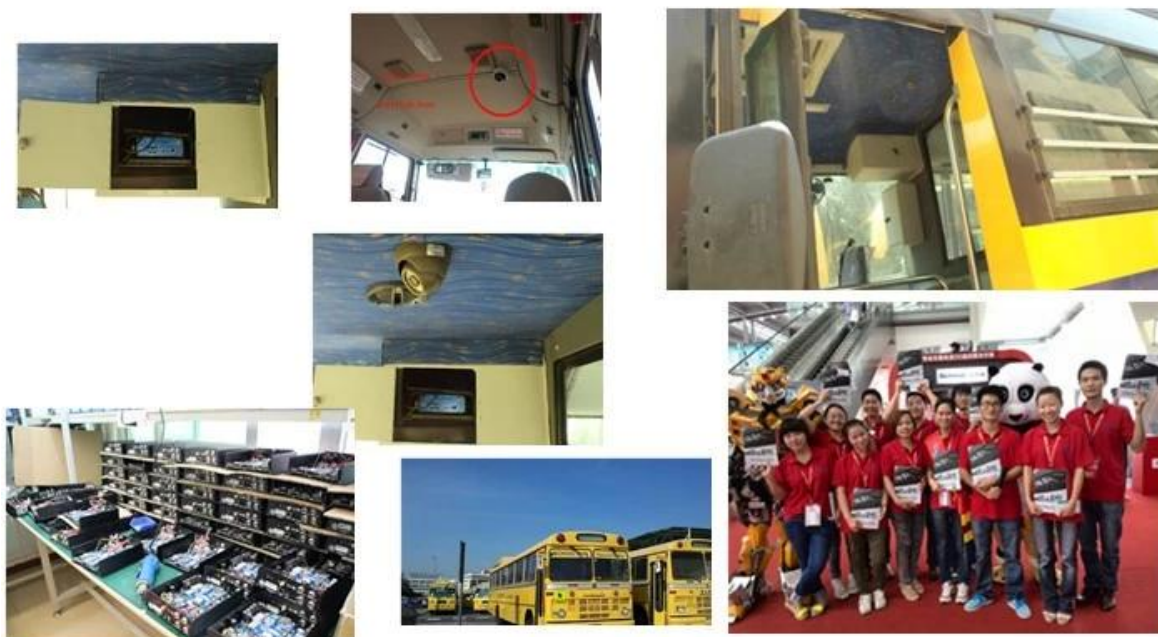
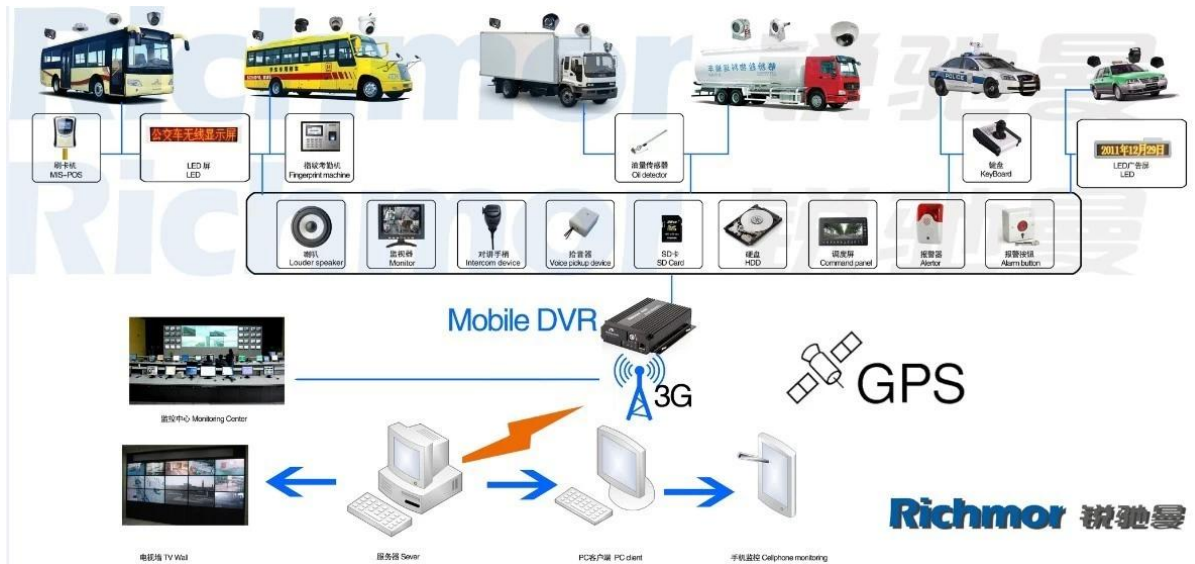


Pro Windows PC v reálném čase

Pro IOS & Android OS Mobile Surveillance



Náš mobilní DVR projekt pro vozidla



Osvědčení:

VERIFICATION OF CONFORMITY

Verification of Conformity
Reference No.: LC0134008719

Responsible Party: Shenzhen Reaktor Technology Development Co., LTD.
Address: 27 No.88 West Longgang Road, Longhua New District, Shenzhen, China
Product: Camera
Models: RCM-PC218, RCM-PC218L, RCM-LP218, RCM-PC118, RCM-AP180, RCM-MP180, RCM-S20, RCM-AS, RCM-S40, RCM-S60, RCM-S80, RCM-S100, RCM-S120, RCM-S140, RCM-S160, RCM-S180, RCM-S200, RCM-S220, RCM-S240, RCM-S260, RCM-S280, RCM-S300, RCM-S320, RCM-S340, RCM-S360, RCM-S380, RCM-S400, RCM-S420, RCM-S440, RCM-S460, RCM-S480, RCM-S500, RCM-S520, RCM-S540, RCM-S560, RCM-S580, RCM-S600, RCM-S620, RCM-S640, RCM-S660, RCM-S680, RCM-S700, RCM-S720, RCM-S740, RCM-S760, RCM-S780, RCM-S800, RCM-S820, RCM-S840, RCM-S860, RCM-S880, RCM-S900, RCM-S920, RCM-S940, RCM-S960, RCM-S980, RCM-S1000

Trade Mark: Reaktor
Standards: FCC CFR 47 PART 15 Subpart B, 2011, ANSI C63.4-2008

Important note:
This device is in compliance with Part 15 of the FCC Rules and Regulations for radio frequency devices. Operation of the product is subject to the following two conditions:
(1) This device may not cause harmful interference, and (2) this device must accept any interference received, including interference that may cause undesired operation.
This device is in compliance with the applicable FCC Rules and Regulations. The method of testing was in accordance with the most accurate measurement standards available, and that all necessary steps have been taken to ensure that all production units of the same equipment will continue to comply with the Federal Communications Commission's requirements.

Shenzhen LCC Compliance Testing Laboratory Ltd.
27, Angang Industrial Park, Longgang Road, Bao'an Dist., Shenzhen 518109, Guangdong, China
Tel: 86755-83291122 Fax: 86755-83291123
http://www.lcc-test.com Email: admin@lcc-test.com

Manager
April 16, 2013

VERIFICATION OF CONFORMITY

Verification of Conformity
Reference No.: LC0134008719

Responsible Party: Shenzhen Reaktor Technology Development Co., LTD.
Address: 27 No.88 West Longgang Road, Longhua New District, Shenzhen, China
Product: Media DVR
Models: RCM-M218, RCM-M318, RCM-M418, RCM-M518, RCM-M618, RCM-M718, RCM-M818, RCM-M918, RCM-M1018, RCM-M1118, RCM-M1218, RCM-M1318, RCM-M1418, RCM-M1518, RCM-M1618, RCM-M1718, RCM-M1818, RCM-M1918, RCM-M2018, RCM-M2118, RCM-M2218, RCM-M2318, RCM-M2418, RCM-M2518, RCM-M2618, RCM-M2718, RCM-M2818, RCM-M2918, RCM-M3018, RCM-M3118, RCM-M3218, RCM-M3318, RCM-M3418, RCM-M3518, RCM-M3618, RCM-M3718, RCM-M3818, RCM-M3918, RCM-M4018, RCM-M4118, RCM-M4218, RCM-M4318, RCM-M4418, RCM-M4518, RCM-M4618, RCM-M4718, RCM-M4818, RCM-M4918, RCM-M5018, RCM-M5118, RCM-M5218, RCM-M5318, RCM-M5418, RCM-M5518, RCM-M5618, RCM-M5718, RCM-M5818, RCM-M5918, RCM-M6018, RCM-M6118, RCM-M6218, RCM-M6318, RCM-M6418, RCM-M6518, RCM-M6618, RCM-M6718, RCM-M6818, RCM-M6918, RCM-M7018, RCM-M7118, RCM-M7218, RCM-M7318, RCM-M7418, RCM-M7518, RCM-M7618, RCM-M7718, RCM-M7818, RCM-M7918, RCM-M8018, RCM-M8118, RCM-M8218, RCM-M8318, RCM-M8418, RCM-M8518, RCM-M8618, RCM-M8718, RCM-M8818, RCM-M8918, RCM-M9018, RCM-M9118, RCM-M9218, RCM-M9318, RCM-M9418, RCM-M9518, RCM-M9618, RCM-M9718, RCM-M9818, RCM-M9918, RCM-M10018

Trade Mark: Reaktor
Standards: FCC CFR 47 PART 15 Subpart B, 2011, ANSI C63.4-2008

Important note:
This device is in compliance with Part 15 of the FCC Rules and Regulations for radio frequency devices. Operation of the product is subject to the following two conditions:
(1) This device may not cause harmful interference, and (2) this device must accept any interference received, including interference that may cause undesired operation.
This device is in compliance with the applicable FCC Rules and Regulations. The method of testing was in accordance with the most accurate measurement standards available, and that all necessary steps have been taken to ensure that all production units of the same equipment will continue to comply with the Federal Communications Commission's requirements.

Shenzhen LCC Compliance Testing Laboratory Ltd.
27, Angang Industrial Park, Longgang Road, Bao'an Dist., Shenzhen 518109, Guangdong, China
Tel: 86755-83291122 Fax: 86755-83291123
http://www.lcc-test.com Email: admin@lcc-test.com

Manager
April 16, 2013

CERTIFICATE OF CONFORMITY
Reference No.: LC0134008719

Applicant: Shenzhen Reaktor Technology Development Co., LTD.
Address: 27 No.88 West Longgang Road, Longhua New District, Shenzhen, China
Product: Media DVR
Models: RCM-M218, RCM-M318, RCM-M418, RCM-M518, RCM-M618, RCM-M718, RCM-M818, RCM-M918, RCM-M1018, RCM-M1118, RCM-M1218, RCM-M1318, RCM-M1418, RCM-M1518, RCM-M1618, RCM-M1718, RCM-M1818, RCM-M1918, RCM-M2018, RCM-M2118, RCM-M2218, RCM-M2318, RCM-M2418, RCM-M2518, RCM-M2618, RCM-M2718, RCM-M2818, RCM-M2918, RCM-M3018, RCM-M3118, RCM-M3218, RCM-M3318, RCM-M3418, RCM-M3518, RCM-M3618, RCM-M3718, RCM-M3818, RCM-M3918, RCM-M4018, RCM-M4118, RCM-M4218, RCM-M4318, RCM-M4418, RCM-M4518, RCM-M4618, RCM-M4718, RCM-M4818, RCM-M4918, RCM-M5018, RCM-M5118, RCM-M5218, RCM-M5318, RCM-M5418, RCM-M5518, RCM-M5618, RCM-M5718, RCM-M5818, RCM-M5918, RCM-M6018, RCM-M6118, RCM-M6218, RCM-M6318, RCM-M6418, RCM-M6518, RCM-M6618, RCM-M6718, RCM-M6818, RCM-M6918, RCM-M7018, RCM-M7118, RCM-M7218, RCM-M7318, RCM-M7418, RCM-M7518, RCM-M7618, RCM-M7718, RCM-M7818, RCM-M7918, RCM-M8018, RCM-M8118, RCM-M8218, RCM-M8318, RCM-M8418, RCM-M8518, RCM-M8618, RCM-M8718, RCM-M8818, RCM-M8918, RCM-M9018, RCM-M9118, RCM-M9218, RCM-M9318, RCM-M9418, RCM-M9518, RCM-M9618, RCM-M9718, RCM-M9818, RCM-M9918, RCM-M10018

Trade Mark: Reaktor
Standards: FCC CFR 47 PART 15 Subpart B, 2011, ANSI C63.4-2008

The submitted products have been tested in accordance with the latest standards and found in compliance with the following European Directives:
The EMC Directive 2004/108/EC
EN 55022, EN 55024, EN 55025
The test was performed in normal operation mode. The test results apply only to the particular sample tested and to the specific test carried out. This certificate applies specifically to the sample investigated in our test reference number only.
The CE Marking as shown below can be affixed to the product after preparation of necessary technical documentation.
Clear original Directives form to be obtained.

Shenzhen LCC Compliance Testing Laboratory Ltd.
27, Angang Industrial Park, Longgang Road, Bao'an Dist., Shenzhen 518109, Guangdong, China
Tel: 86755-83291122 Fax: 86755-83291123
http://www.lcc-test.com Email: admin@lcc-test.com

Manager
April 16, 2013

CERTIFICATE OF CONFORMITY

CERTIFICATE of Conformity
Reference No.: LC0134008719

Applicant: Shenzhen Reaktor Technology Development Co., LTD.
Address: 27 No.88 West Longgang Road, Longhua New District, Shenzhen, China
Product: Camera
Models: RCM-PC218, RCM-PC218L, RCM-LP218, RCM-PC118, RCM-AP180, RCM-MP180, RCM-S20, RCM-AS, RCM-S40, RCM-S60, RCM-S80, RCM-S100, RCM-S120, RCM-S140, RCM-S160, RCM-S180, RCM-S200, RCM-S220, RCM-S240, RCM-S260, RCM-S280, RCM-S300, RCM-S320, RCM-S340, RCM-S360, RCM-S380, RCM-S400, RCM-S420, RCM-S440, RCM-S460, RCM-S480, RCM-S500, RCM-S520, RCM-S540, RCM-S560, RCM-S580, RCM-S600, RCM-S620, RCM-S640, RCM-S660, RCM-S680, RCM-S700, RCM-S720, RCM-S740, RCM-S760, RCM-S780, RCM-S800, RCM-S820, RCM-S840, RCM-S860, RCM-S880, RCM-S900, RCM-S920, RCM-S940, RCM-S960, RCM-S980, RCM-S1000

Trade Mark: Reaktor
Standards: FCC CFR 47 PART 15 Subpart B, 2011, ANSI C63.4-2008

The submitted products have been tested in accordance with the latest standards and found in compliance with the following European Directives:
The EMC Directive 2004/108/EC
EN 55022, EN 55024, EN 55025
The test was performed in normal operation mode. The test results apply only to the particular sample tested and to the specific test carried out. This certificate applies specifically to the sample investigated in our test reference number only.
The CE Marking as shown below can be affixed to the product after preparation of necessary technical documentation.
Clear original Directives form to be obtained.

Shenzhen LCC Compliance Testing Laboratory Ltd.
27, Angang Industrial Park, Longgang Road, Bao'an Dist., Shenzhen 518109, Guangdong, China
Tel: 86755-83291122 Fax: 86755-83291123
http://www.lcc-test.com Email: admin@lcc-test.com

Manager
April 16, 2013

CERTIFICATE OF CONFORMITY

CERTIFICATE of Conformity
Reference No.: LC0134008719

Applicant: Shenzhen Reaktor Technology Development Co., LTD.
Address: 27 No.88 West Longgang Road, Longhua New District, Shenzhen, China
Trade Mark: Reaktor
Product: Camera
Models: RCM-PC218, RCM-PC218L, RCM-LP218, RCM-PC118, RCM-AP180, RCM-MP180, RCM-S20, RCM-AS, RCM-S40, RCM-S60, RCM-S80, RCM-S100, RCM-S120, RCM-S140, RCM-S160, RCM-S180, RCM-S200, RCM-S220, RCM-S240, RCM-S260, RCM-S280, RCM-S300, RCM-S320, RCM-S340, RCM-S360, RCM-S380, RCM-S400, RCM-S420, RCM-S440, RCM-S460, RCM-S480, RCM-S500, RCM-S520, RCM-S540, RCM-S560, RCM-S580, RCM-S600, RCM-S620, RCM-S640, RCM-S660, RCM-S680, RCM-S700, RCM-S720, RCM-S740, RCM-S760, RCM-S780, RCM-S800, RCM-S820, RCM-S840, RCM-S860, RCM-S880, RCM-S900, RCM-S920, RCM-S940, RCM-S960, RCM-S980, RCM-S1000

Standards: FCC CFR 47 PART 15 Subpart B, 2011, ANSI C63.4-2008

The submitted products have been tested in accordance with the requirements of Commission Decision of 27 July 2011 amending Directive 2011/65/EU.
The test was performed in normal operation mode. The test results apply only to the particular sample tested and to the specific test carried out. This certificate applies specifically to the sample investigated in our test reference number only.
The RoHS Marking as shown below can be affixed to the product after preparation of necessary technical documentation.
Clear original Directives form to be obtained.

Shenzhen LCC Compliance Testing Laboratory Ltd.
27, Angang Industrial Park, Longgang Road, Bao'an Dist., Shenzhen 518109, Guangdong, China
Tel: 86755-83291122 Fax: 86755-83291123
http://www.lcc-test.com Email: admin@lcc-test.com

Manager
April 16, 2013

CERTIFICATE OF CONFORMITY

CERTIFICATE of Conformity
Reference No.: LC0134008719

Applicant: Shenzhen Reaktor Technology Development Co., LTD.
Address: 27 No.88 West Longgang Road, Longhua New District, Shenzhen, China
Trade Mark: Reaktor
Product: Media DVR
Models: RCM-M218, RCM-M318, RCM-M418, RCM-M518, RCM-M618, RCM-M718, RCM-M818, RCM-M918, RCM-M1018, RCM-M1118, RCM-M1218, RCM-M1318, RCM-M1418, RCM-M1518, RCM-M1618, RCM-M1718, RCM-M1818, RCM-M1918, RCM-M2018, RCM-M2118, RCM-M2218, RCM-M2318, RCM-M2418, RCM-M2518, RCM-M2618, RCM-M2718, RCM-M2818, RCM-M2918, RCM-M3018, RCM-M3118, RCM-M3218, RCM-M3318, RCM-M3418, RCM-M3518, RCM-M3618, RCM-M3718, RCM-M3818, RCM-M3918, RCM-M4018, RCM-M4118, RCM-M4218, RCM-M4318, RCM-M4418, RCM-M4518, RCM-M4618, RCM-M4718, RCM-M4818, RCM-M4918, RCM-M5018, RCM-M5118, RCM-M5218, RCM-M5318, RCM-M5418, RCM-M5518, RCM-M5618, RCM-M5718, RCM-M5818, RCM-M5918, RCM-M6018, RCM-M6118, RCM-M6218, RCM-M6318, RCM-M6418, RCM-M6518, RCM-M6618, RCM-M6718, RCM-M6818, RCM-M6918, RCM-M7018, RCM-M7118, RCM-M7218, RCM-M7318, RCM-M7418, RCM-M7518, RCM-M7618, RCM-M7718, RCM-M7818, RCM-M7918, RCM-M8018, RCM-M8118, RCM-M8218, RCM-M8318, RCM-M8418, RCM-M8518, RCM-M8618, RCM-M8718, RCM-M8818, RCM-M8918, RCM-M9018, RCM-M9118, RCM-M9218, RCM-M9318, RCM-M9418, RCM-M9518, RCM-M9618, RCM-M9718, RCM-M9818, RCM-M9918, RCM-M10018

Standards: FCC CFR 47 PART 15 Subpart B, 2011, ANSI C63.4-2008

The submitted products have been tested in accordance with the requirements of Commission Decision of 27 July 2011 amending Directive 2011/65/EU.
The test was performed in normal operation mode. The test results apply only to the particular sample tested and to the specific test carried out. This certificate applies specifically to the sample investigated in our test reference number only.
The RoHS Marking as shown below can be affixed to the product after preparation of necessary technical documentation.
Clear original Directives form to be obtained.

Shenzhen LCC Compliance Testing Laboratory Ltd.
27, Angang Industrial Park, Longgang Road, Bao'an Dist., Shenzhen 518109, Guangdong, China
Tel: 86755-83291122 Fax: 86755-83291123
http://www.lcc-test.com Email: admin@lcc-test.com

Manager
April 16, 2013

Související produkty:



SD Mobile DVR with 3G GPS



SD Mobile DVR with WIFI 3G GPS G-Sensor

Podmínky spolupráce:

- Platební podmínky:** T / T, Western Union, MoneyGram, Paypal
- Čas doručení:** Do 5 pracovních dnů po potvrzení platby.
- Záruka:** 12 měsíců

Přepavní způsob: DHL, UPS, FedEx, EMS, TNT apod.

Balení:



Richmor Brand Package



Standard Package

Poprodejní servis:

1. Po obdržení našich produktů vám pomůžeme uvědomit si, jak ji používat.
2. Nabízíme vám software, pokud používáte náš mobilní DVR.
3. Dvanáct měsíců záruka
4. Během záruky, pokud máte nějaký problém, vám můžeme pomoci vyřešit.
5. Během záruky se můžete k nám vrátit a opravit ji.

Poznámka: Všichni kvalifikovaní vrácení / výměna musí být vedeni námi, nebo nepřijímáte návrat, aniž byste nás informovali předem.

O nás:



Richmor

OEM & ODM Service

Brasil World Cup Supplier



Inner Training after study from Alibaba in July



Technical Training For Fast Response to Customer Richmor 锐驰曼



lecturer for Execution