

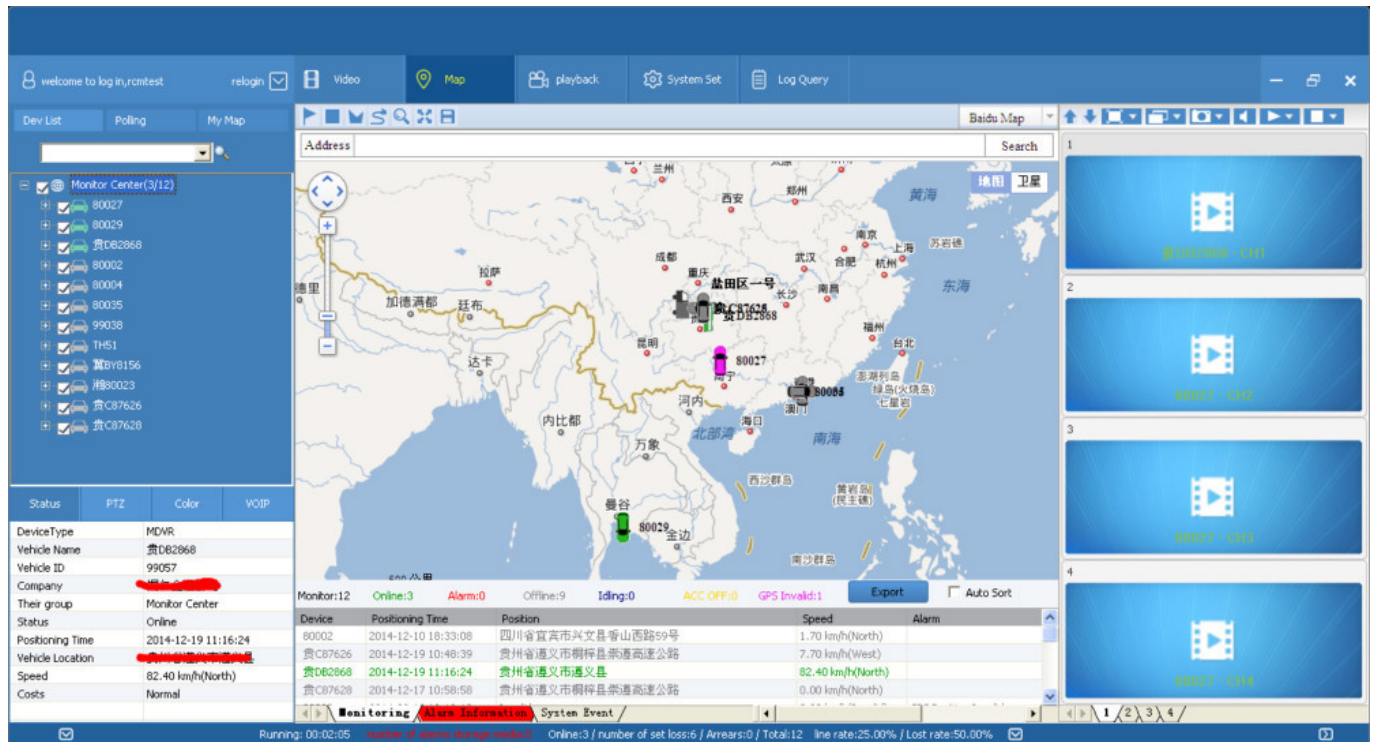
Specification

| Item | | Parameter |
|-----------------------|--------------------------|---|
| OS | | Linux |
| Language | | English/Chinese/Customized |
| Video Compression | | H.264 Compression |
| OSD | | Overlays information such as date time and vehicle ID |
| GUI | Graphical User Interface | Setup system parameters with the remote control. |
| Video Record System | Video Input | 4CH 960P/720P AHD input,aviation connector, 1.0Vp-p, 75Ω |
| | Video Onput | 1 CVBS, 1.0Vp-p, 75Ω,Aviation,Support 1CH Full Screen,4CH Screen view |
| | Preview | Support 1 channel and 4 channels preview., Support Manual/Alarm Trigger full screen preview |
| | Resolution | 720P/D1/HD1/CIF, MAX:4 channels of 720P and 4 channels of D1 |
| | Image Quality | 1-4 levels, 1 is the highest level. |
| | Video Standard | PAL: 100f/s , CCIR625 line,50field; NTSC: 120f/s, CCIR525 line,60field; CIF: 256Kbps ~ 1.5Mbps, 8 level video quality optional; HD1: 600Kbps ~ 2.5Mbps, 8 level video quality optional; D1: 800Kbps ~ 3Mbps, 8 level video quality optional; 720P: 4Mbps-6Mbps, multi level video quality optional |
| | Record Mode | The default setting is auto recording after power on. Timed recording, alarm trigger recording and manual recording are supported. |
| Audio | Audio Input | 4CH Aviation Plug Input |
| | Audio Output | 2CH,headphone connect at front panel, BNC Connect on Back panel |
| | Compression | G.726 compression, 8KB/s speed |
| Alarm Input | | 7CH Alarm Input,1CH AD Input,impulse speed input,Alarm Linkage |
| Alarm Output | | 2CH Alarm Output,Support Light/Sound alarm sensor,Oil/Power cut off |
| Interface | | 3CH RS232, POS/Fuel Sensor/LED Advertisement Connection |
| Wireless Transmission | | 1CH 485 Interface,Connect PTZ Camera Support Built in 3G transmission,, WCDMA, CDMA2000,GPRS, EDGE; Built in 4G module optional, TDD-LTE, FDD-LTE |
| GPS Position | | Support Built GPS/BD Module |
| Storage | HDD | Max 2.5" 1TB HDD |
| | SD Card | Max 128GB SD Card Mirror Recording Keep Data Safety |
| | Update | Support USB Updating, SD Card Updating,OTA Remote Updating |
| | File Format | H.264 |
| | File System | Special FAT32 File System |
| Record Replay | USB | USB Interface on Front Panel for data back up by U Disk,Hard Disk |
| | Video Search | Search By Record Time/Record Type etc |
| | Playback | Max support 4CH Replay /Stop/Fast/Slow at same time Support forward and backward play at the speed of: x 2,x4,x8,x16. |
| Security | | User/Admin 2 Level Different Password |
| Optional Functions | Voice Call | Support voice call each other |
| | TTS Voice Broadcast | Support TTS voice broadcast function. |
| | Serial Expand | Support LED Advertisement Panel,Oil Sensor, POS,Bus Station Broadcaster,Car OBD,ect.external device |
| Voltage & Power | Power Management | Wide Voltage.Support Timed/Delay off |
| | Input Voltage | DC:+6V - +36V |
| | Output Voltage | +12V~1.5A,+5V~1.5A |
| | Power | Working <5W |
| Working Environment | Temperature | -20℃ - +70℃ |
| | Humidity | 20% - 80% |
| | Size | 200 (D)* 187(W)* 62(H) mm |
| Ohters | Weight | 1.90 Kg |

Our Services



CMSV6 Interface



CMSV6 In Mobile Phone

hand

Have all in the palm of your

Real-time monitoring via Mobile Phone
Support iPhone, Android, iPad system



Video & Audio Monitoring Online Vehicle GPS
Satellite Map Video Storage
PTZ control Tracking Display Picture
Snapshot Voice intercom

FQA

Q: During playback, the map doesn't show?

A: Possible reasons are as follows;

- 1.Net cable did not connect to PC;
- 2.Net works, but the computer can not get to the Internet;

Q: When SD card and HDD records, How is the record coverage?

A: SD card and HDD will record circularly for each other. When they are full, they will delete the original video records respectively.

Q: The device was opened, HDD was installed, but the device can not record successful.

- A: 1.Check the HDD/SD Card was formatted or not, the unformatted HH/SD Card can not be used. Enter into the Main Menu - System Setup - Formatting the new installed HDD/SD Card.
2. If the recording channel is closed, if set the timing recording, it can not recording when it beyond the period of timing recording.
 3. If the HDD is connect well, if the HDD/SD light is on.



Richmor Brand Package



Standard Package



Shipping

Strong cooperated with DHL/UPS Etc for fast and safety delivery.

- a. 2-5 days after payment cleared for sample order.
- b. 5-10 days after payment cleared depends on order quantity for bulk order.

Payment



MoneyGram

PayPal

HSBC



Exhibition

Richmor

CPSE2012 in Shenzhen



CPSE2013

10.29-10.31

4 Booth we have

Welcome you !!!



CPSE2012-- Guangdong TV Report-Shenzhen Richmor



Certifications

| | |
|--|--|
|  | |
| <h2>Verification of Conformity</h2> <p>Reference No.: L201004040009</p> | |
| Responsible Party | Shenzhen Richstar Technology Development Co., LTD. |
| Address | 1F No.40 West Longgang Road, Longhua New District, Shenzhen, China |
| Product | Cables |
| Model No. | RSC-10P20H, RSC-10P20H, RSC-10P20H, RSC-10P20H, RSC-10P20H, RSC-10P20H, RSC-10P20H, RSC-10P20H, RSC-10P20H, RSC-10P20H, RSC-10P20H, RSC-10P20H, RSC-10P20H, RSC-10P20H, RSC-10P20H, RSC-10P20H, RSC-10P20H, RSC-10P20H, RSC-10P20H, RSC-10P20H |
| Trade Mark | Richstar |
| Standards | CCC-CR1 at PART 18 Subpart B1, 2011, ANSI/CAN 1137-2008 |
| <p>Important note:</p> <p>This identity is in conformance with Part 18 of the FCC Rules and Regulations for radio frequency devices. Operation of this identity is subject to the following two conditions:</p> <p>(1) This device may not cause harmful interference, and (2) this device must accept any interference received, including interference that may cause undesired operation.</p> <p>We intend to conform to the applicable FCC Rules and Regulations. The method of testing was in accordance to the most accurate measurement standard available, and that all necessary steps have been followed to assure that all production units of the same equipment will continue to comply with the Federal Communications Commission's requirements.</p> | |
|  | |
| Shenzhen LCC Compliance Testing Laboratory Ltd. 1/F, Anping Industrial Park, Pingliang Road, Bao'an Dist., Shenzhen District, Shenzhen Guangdong, China Tel: 86-755-83691199 http://www.lcc-test.com | |
| Date: 2010.04.04 Tel: 86-755-83691199 Email: shenzhen@lcc-test.com | |

| | | |
|---|--|--|
| VERIFICATION OF CONFORMITY |  | |
| | <h2 style="margin: 0;">Verification of Conformity</h2> <p style="margin: 0;">Reference No.: 1701284000719</p> | |
| | Responsible Party : | Shenzhen Weikuan Technology Development Co., LTD. |
| | Address : | 3F Bay 34 West Longgang Road, Longgang New District, Shenzhen, China |
| | Product : | Mobile DVR |
| | Model No.: | WCM-M00000, WCM-M00001, WCM-M00002, WCM-M00003, WCM-M00004, WCM-M00005, WCM-M00006, WCM-M00007, WCM-M00008, WCM-M00009 |
| | Trade Mark : | WIKUON |
| | Standards : | FCC (PCE) at Part15 on August 30, 2014, 46822 (SLS-4-2008) |
| | <p>Important note:</p> <p>This device is in-conformance with Part 15 of the FCC Rules and Regulations for radio frequency emission. Operation of this product is subject to the following two conditions:</p> <p>(1) this device may not interfere with other electronics; and (2) this device must accept any interference received, including interference that may cause undesired operation.</p> <p>Users intend to conform to the applicable FCC Rules and Regulations. The content of labeling was in accordance to the most accurate measurement standards possible, and that all necessary steps have been taken to ensure that all production units of the same equipment will continue to comply with the Federal Communications Commission's requirements.</p> | |
| |  | |
| <p style="margin: 0;">Shenzhen, China</p> <p style="margin: 0;">April 16, 2013</p> | | |
| <p>Shenzhen LCC Compliance Testing Laboratory Ltd. #1, Angang Industrial Park, Tangme Road, Shean New District, Shenzhen, Guangdong, China Tel: 86-755-83588120 http://www.LCC-cert.com</p> <p style="text-align: right;">Fax: 86-755-83588150 Email: szlcc@www.LCC-cert.com</p> | | |

CERTIFICATE OF CONFORMITY

CERTIFICATE of Conformity

Reference No.: LCCP-D00120474

| | |
|-------------|--|
| Applicant: | Shenzhen Rixinwei Technology Development Co., LTD. |
| Address: | 1/F No.16 West Longgang Road, Longgang New District, Shenzhen, China |
| Product: | Mobile DVR |
| Model(s): | RXCM-M0010R, RXCM-M0010H, RXCM-M0010L, RXCM-M0010S, RXCM-M0010T, RXCM-S0010R, RXCM-S0010H |
| Trade Mark: | Rixinwei |

The submitted products have been tested by us with the latest standards and found in compliance with the following European Directives:

The EMC Directive 2004/108/EC

EN 55022: 2010, EN 55024: 2010

The tests were performed in normal operation mode. The test results apply only to the particular sample tested; it is the specific make cannot suit. This certificate applies specifically to the sample investigated in our test reference number only.

This CE marking as shown below can be affixed on the product after presentation of necessary technical documentation.

Other relevant Directives have to be observed.

Authorized Signature
April 10, 2011

Shenzhen LCCP Compliance Testing Laboratory Ltd.
1/F, Senguen Industrial Park, Fuyong Road, Bao'an Dist., Shenzhen, Shenzhen,
Guangdong, China
Tel: 0755-26741133
<http://www.lccp.com.cn>

Fax: 0755-26741133
Email: information@lccp.com.cn

| | | |
|--|---|--|
| CERTIFICATE OF CONFORMITY |  | |
| | CERTIFICATE of Conformity Reference No. CCC-08100870 | |
| | Applicant | Shenzhen Minxing Technology Development Co., LTD. |
| | Address | 2F, No.88 West Longgang Road, Longgang New District, Shenzhen, China |
| | Product | 2. Tablets |
| Model(s) | NON-IP3X15, NON-IP3X15, NON-IP3X15, NON-IP3X15, NON-IP3X15, NON-IP3X15, NON-IP3X15, NON-IP3X15, NON-IP3X15, NON-IP3X15, NON-IP3X15, NON-IP3X15, NON-IP3X15, NON-IP3X15, NON-IP3X15, NON-IP3X15 | |
| Trade Mark | Shimono | |
| The submitted products have been tested by us with the latest standards and found in compliance with the following European Directives: The EMC Directive 2004/108/EC EN 55022: 2010, EN 55024: 2010 | | |
| The tests were performed in normal operation mode. The test results apply only to the particular sample tested and to the specific tests carried out. This certificate applies specifically to the samples investigated in our test reference number 2010. | | |
| The CE Markings as shown below can be affixed on the product after presentation of necessary technical documentation. | | |
| (Other relevant Directives have to be stated) | | |
|  | |  April 10, 2012  |
| Shenzhen CCB Consumer Testing Laboratory Ltd. 10/F, Aikang Industrial Park, Tanggou Street, Bao'an Dist., Shenzhen, Guangdong, China Tel: (86)755-26261121 Fax: (86)755-26261122 Email: admin@shenzhen-ccb-test.com http://www.ccb-test.com | | |

CERTIFICATE OF CONFORMITY



CERTIFICATE of Conformity

2017/0001 Recycled or Recyclable Substance

Reference No.: L31360100070

When tested as specified, the submitted sample complies with the requirements of Commission Decision of 21 July 2017 amending Directive 2002/95/EC.

| | |
|-------------------|--|
| Applicant | Shenzhen Richison Technology Development Co., LTD. |
| Address | 3F, No.88 West Longgang Road, Longgang New District, Shenzhen, China |
| Trade Mark | Richison |
| Product | Camera |
| Models | RCM-AP0126, RCM-AP0128, RCM-AP0129, RCM-AP0134, RCM-AP0135, RCM-AP0136, RCM-AP0137, RCM-AP0138, RCM-AP0139, RCM-AP0140, RCM-AP0141, RCM-AP0142, RCM-AP0143, RCM-AP0144, RCM-AP0145, RCM-AP0146, RCM-AP0147, RCM-AP0148, RCM-AP0149, RCM-AP0150, RCM-AP0151, RCM-AP0152, RCM-AP0153, RCM-AP0154, RCM-AP0155, RCM-AP0156, RCM-AP0157, RCM-AP0158, RCM-AP0159, RCM-AP0160, RCM-AP0161, RCM-AP0162, RCM-AP0163, RCM-AP0164, RCM-AP0165, RCM-AP0166, RCM-AP0167, RCM-AP0168, RCM-AP0169, RCM-AP0170, RCM-AP0171, RCM-AP0172, RCM-AP0173, RCM-AP0174, RCM-AP0175, RCM-AP0176, RCM-AP0177, RCM-AP0178, RCM-AP0179, RCM-AP0180, RCM-AP0181, RCM-AP0182, RCM-AP0183, RCM-AP0184, RCM-AP0185, RCM-AP0186, RCM-AP0187, RCM-AP0188, RCM-AP0189, RCM-AP0190, RCM-AP0191, RCM-AP0192, RCM-AP0193, RCM-AP0194, RCM-AP0195, RCM-AP0196, RCM-AP0197, RCM-AP0198, RCM-AP0199, RCM-AP0200, RCM-AP0201, RCM-AP0202, RCM-AP0203, RCM-AP0204, RCM-AP0205, RCM-AP0206, RCM-AP0207, RCM-AP0208, RCM-AP0209, RCM-AP0210, RCM-AP0211, RCM-AP0212, RCM-AP0213, RCM-AP0214, RCM-AP0215, RCM-AP0216, RCM-AP0217, RCM-AP0218, RCM-AP0219, RCM-AP0220, RCM-AP0221, RCM-AP0222, RCM-AP0223, RCM-AP0224, RCM-AP0225, RCM-AP0226, RCM-AP0227, RCM-AP0228, RCM-AP0229, RCM-AP0230, RCM-AP0231, RCM-AP0232, RCM-AP0233, RCM-AP0234, RCM-AP0235, RCM-AP0236, RCM-AP0237, RCM-AP0238, RCM-AP0239, RCM-AP0240, RCM-AP0241, RCM-AP0242, RCM-AP0243, RCM-AP0244, RCM-AP0245, RCM-AP0246, RCM-AP0247, RCM-AP0248, RCM-AP0249, RCM-AP0250, RCM-AP0251, RCM-AP0252, RCM-AP0253, RCM-AP0254, RCM-AP0255, RCM-AP0256, RCM-AP0257, RCM-AP0258, RCM-AP0259, RCM-AP0260, RCM-AP0261, RCM-AP0262, RCM-AP0263, RCM-AP0264, RCM-AP0265, RCM-AP0266, RCM-AP0267, RCM-AP0268, RCM-AP0269, RCM-AP0270, RCM-AP0271, RCM-AP0272, RCM-AP0273, RCM-AP0274, RCM-AP0275, RCM-AP0276, RCM-AP0277, RCM-AP0278, RCM-AP0279, RCM-AP0280, RCM-AP0281, RCM-AP0282, RCM-AP0283, RCM-AP0284, RCM-AP0285, RCM-AP0286, RCM-AP0287, RCM-AP0288, RCM-AP0289, RCM-AP0290, RCM-AP0291, RCM-AP0292, RCM-AP0293, RCM-AP0294, RCM-AP0295, RCM-AP0296, RCM-AP0297, RCM-AP0298, RCM-AP0299, RCM-AP0300, RCM-AP0301, RCM-AP0302, RCM-AP0303, RCM-AP0304, RCM-AP0305, RCM-AP0306, RCM-AP0307, RCM-AP0308, RCM-AP0309, RCM-AP0310, RCM-AP0311, RCM-AP0312, RCM-AP0313, RCM-AP0314, RCM-AP0315, RCM-AP0316, RCM-AP0317, RCM-AP0318, RCM-AP0319, RCM-AP0320, RCM-AP0321, RCM-AP0322, RCM-AP0323, RCM-AP0324, RCM-AP0325, RCM-AP0326, RCM-AP0327, RCM-AP0328, RCM-AP0329, RCM-AP0330, RCM-AP0331, RCM-AP0332, RCM-AP0333, RCM-AP0334, RCM-AP0335, RCM-AP0336, RCM-AP0337, RCM-AP0338, RCM-AP0339, RCM-AP0340, RCM-AP0341, RCM-AP0342, RCM-AP0343, RCM-AP0344, RCM-AP0345, RCM-AP0346, RCM-AP0347, RCM-AP0348, RCM-AP0349, RCM-AP0350, RCM-AP0351, RCM-AP0352, RCM-AP0353, RCM-AP0354, RCM-AP0355, RCM-AP0356, RCM-AP0357, RCM-AP0358, RCM-AP0359, RCM-AP0360, RCM-AP0361, RCM-AP0362, RCM-AP0363, RCM-AP0364, RCM-AP0365, RCM-AP0366, RCM-AP0367, RCM-AP0368, RCM-AP0369, RCM-AP0370, RCM-AP0371, RCM-AP0372, RCM-AP0373, RCM-AP0374, RCM-AP0375, RCM-AP0376, RCM-AP0377, RCM-AP0378, RCM-AP0379, RCM-AP0380, RCM-AP0381, RCM-AP0382, RCM-AP0383, RCM-AP0384, RCM-AP0385, RCM-AP0386, RCM-AP0387, RCM-AP0388, RCM-AP0389, RCM-AP0390, RCM-AP0391, RCM-AP0392, RCM-AP0393, RCM-AP0394, RCM-AP0395, RCM-AP0396, RCM-AP0397, RCM-AP0398, RCM-AP0399, RCM-AP0400, RCM-AP0401, RCM-AP0402, RCM-AP0403, RCM-AP0404, RCM-AP0405, RCM-AP0406, RCM-AP0407, RCM-AP0408, RCM-AP0409, RCM-AP0410, RCM-AP0411, RCM-AP0412, RCM-AP0413, RCM-AP0414, RCM-AP0415, RCM-AP0416, RCM-AP0417, RCM-AP0418, RCM-AP0419, RCM-AP0420, RCM-AP0421, RCM-AP0422, RCM-AP0423, RCM-AP0424, RCM-AP0425, RCM-AP0426, RCM-AP0427, RCM-AP0428, RCM-AP0429, RCM-AP0430, RCM-AP0431, RCM-AP0432, RCM-AP0433, RCM-AP0434, RCM-AP0435, RCM-AP0436, RCM-AP0437, RCM-AP0438, RCM-AP0439, RCM-AP0440, RCM-AP0441, RCM-AP0442, RCM-AP0443, RCM-AP0444, RCM-AP0445, RCM-AP0446, RCM-AP0447, RCM-AP0448, RCM-AP0449, RCM-AP0450, RCM-AP0451, RCM-AP0452, RCM-AP0453, RCM-AP0454, RCM-AP0455, RCM-AP0456, RCM-AP0457, RCM-AP0458, RCM-AP0459, RCM-AP0460, RCM-AP0461, RCM-AP0462, RCM-AP0463, RCM-AP0464, RCM-AP0465, RCM-AP0466, RCM-AP0467, RCM-AP0468, RCM-AP0469, RCM-AP0470, RCM-AP0471, RCM-AP0472, RCM-AP0473, RCM-AP0474, RCM-AP0475, RCM-AP0476, RCM-AP0477, RCM-AP0478, RCM-AP0479, RCM-AP0480, RCM-AP0481, RCM-AP0482, RCM-AP0483, RCM-AP0484, RCM-AP0485, RCM-AP0486, RCM-AP0487, RCM-AP0488, RCM-AP0489, RCM-AP0490, RCM-AP0491, RCM-AP0492, RCM-AP0493, RCM-AP0494, RCM-AP0495, RCM-AP0496, RCM-AP0497, RCM-AP0498, RCM-AP0499, RCM-AP0500, RCM-AP0501, RCM-AP0502, RCM-AP0503, RCM-AP0504, RCM-AP0505, RCM-AP0506, RCM-AP0507, RCM-AP0508, RCM-AP0509, RCM-AP0510, RCM-AP0511, RCM-AP0512, RCM-AP0513, RCM-AP0514, RCM-AP0515, RCM-AP0516, RCM-AP0517, RCM-AP0518, RCM-AP0519, RCM-AP0520, RCM-AP0521, RCM-AP0522, RCM-AP0523, RCM-AP0524, RCM-AP0525, RCM-AP0526, RCM-AP0527, R |

| | | | |
|--|---|--|--|
|  | | CERTIFICATE of Conformity ISO/IEC17025:2005 Inspection of Mechanical Simulation | |
| | | Reference No.: L23-004-0028-04 | |
| (When tested as specified, the following sample complies with the requirements of Commission Decision of 21 July 2017 amending Directive 2017/602/EU) | | | |
| Applicant | : | Shenzhen Roshare Technology Development Co., LTD. | |
| Address | : | 3F Hu 24 Road Longgang Road, Longhua New District, Shenzhen, China | |
| Trade Mark | : | Roshare | |
| Product | : | Monitor (TV) | |
| Model(s) | : | RCM-MC0000L, RCM-MC0000L, RCM-MC0000L, RCM-MC0000L, RCM-MC0000L, RCM-MC0000L, RCM-MC0000L, RCM-MC0000L, RCM-MC0000L, RCM-MC0000L | |
| The test report is issued to the Company subject to the General Conditions of Service printed hereafter. Attention is drawn to the importance of safety, identification and serialisation details outlined therein. The results drawn in this test report refer only to the sample(s) tested unless otherwise stated. This Test Report cannot be reproduced except in full, without prior written permission of the Company. | | | |
| Other relevant details have to be observed. | | | |
| RoHS | |  <i>[Signature]</i> Manager April 16, 2019 | |
| | | Shenzhen L23 Compliance Testing Laboratory Ltd. 10, Qingyuan Industrial Park, Qingyuan Road, Xixiang Street, Baoan District, Shenzhen, Guangdong, China Tel: +86-755-8328-0000 http://www.l23.com.cn | |
| | | Fax: +86-755-8328-0002 Email: admin@l23.com.cn | |

Skype:rcmcctvsales5