

DVR

2TB ahd mobile dvr wifi AP gps 4g





□□	□□	□□
OS		Linux□
□□		□□/□□/□□
□□□□		H.264□□
OSD		□□□□□□□□ID□□□
GUI	□□□□□□	□□□□□□□□□□□□
□□□□	□□□□	4□720P AHD□□/ SD□□/ □□□□□□□□□□1.0Vp-p□75Ω
	□□□□	2CH CVBS + VGA□□□□□□ 1.0Vp-p□75Ω□□□□□□1CH□□□□ 4CH□□□□
	□□	□□1□□□4□□□□□□□□ □□□□/□□□□□□□□
	□□□	720P / D1 / HD1 / CIF□ MAX□4□□720P□4□□D1
	□□□□	0-7□□□0□□□□□□□□
	□□□□	PAL□100f / s□CCIR625□□50field; NTSC□120f / s□CCIR525□□60field; CIF□256Kbps~1.5Mbps□ 8□□□□□□□□□□; HD1□600Kbps~2.5Mbps□ 8□□□□□□□□□□; D1□800Kbps~3Mbps□ 8□□□□□□□□□□; 720P□4Mbps-6Mbps□□□□□□□□□□
	□□□□	□□□□□□□□□□□□□□ □□□□□□□□□□□□□□ □□□□□□□□

		4CH
		2CH BNC Connect on Back
		G.726 8KB / s
		7 AD
		2 /
		3 RS232 POS / LED
		2CH 485 PTZ
		2CH CAN
		3G WCDMA CDMA2000 GPRS EDGE; 4G TDD-LTE FDD-LTE
GPS		GPS / BD
		2.5" TB
	SD	128GB SD
		USB SD OTA
		H.264
		FAT32
	USB	USB U
		/
		Max 4CH Replay / Stop / Fast / Slow
		x 2 x4 x8 x16
		/ 2
		LED POS OBD
		/
		DC + 6V - + 36V
		<5W
		-20°C - + 70°C
		20 - 80
		200D* 187W* 62H mm
		1.90

10. 支持多种网络制式

11. 支持GPS / BD / G-Sensor Extension

12. 支持3G / 4G网络

13. 支持WiFi网络

14. 支持多种接口: 摄像头 / 红外 / POS / LED; 15. 支持多种报警方式

16. OTA On-The-Air 远程升级

17. 支持多种语言

18. 支持IOS / Android系统

支持gps PC端

Android / IOS APP

Mobile monitoring and management platform

Welcome to log in, PC/MTEST System

Video Map Playback System Set Log Query Extend App

Dev List Polling My Map

Monitor Center (5/12)

- 桂KY7586
- 贵C87762
- 贵D62868
- 贵C 26562
- 贵C A6446
- 80119
- 子NP5001
- 桂KY7507
- 桂KY7569
- 桂KY7599
- 湘80024
- 贵B93017

Status	PTZ	Color	VOIP
Device type	MDVR		
Vehicle Name	贵C 26562		
Vehicle ID	80088		
Company	遵义县万发出租运输有限公		
Their Group	Monitor Center		
Status	Online		
Positioning Time	2015-08-11 10:10:22		
Location	贵州省遵义市红花岗区春天		
Speed	13.70 km/h(South)		
Costs	Normal		

1 贵C 26562 - CH1 - 4 KB/S

2 贵C 26562 - CH2 - 36 KB/S

3 贵C 26562 - CH3 - 0 KB/S

4 贵C 26562 - CH4 - 2 KB/S

Monitor:1 Online:1 Alarm:0 Offline:0 Idling:0 ACC OFF:0 GPS Invalid:0

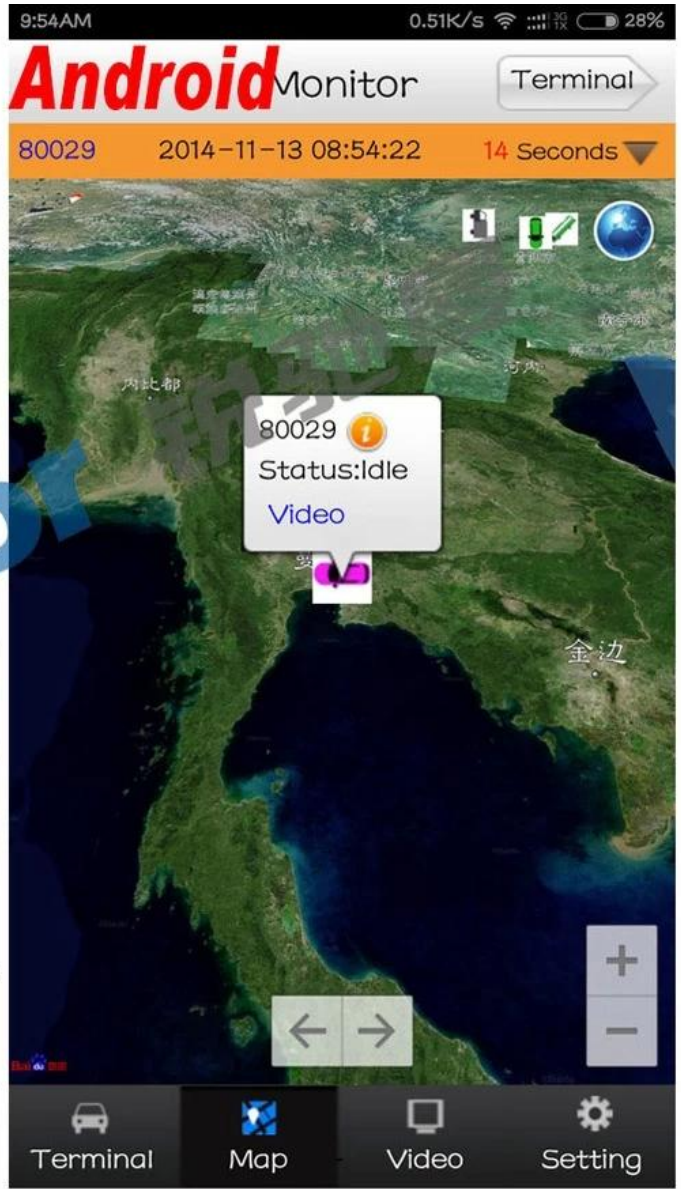
Device	Positioning Time	Position	Speed	Alarm	Sta
贵C87762	2015-08-11 10:10:19	福建省漳州市龙文区G76(厦蓉高速公路)	0.00 km/h(Northwest)		(On

Address Search

贵C87762
Time:2015-08-11 10:10:19
Speed:0.00 km/h(Northwest)
Company:遵义集团(省际)
Position:福建省漳州市龙文区
Status:(Online)ACC ON,Signal
Network signal Normal
Network:3G

运行: 00:02:02 Online:5 / Number of set loss:5 / Arrears:0 / Total:12 Line Rate:41.67% / Lost Rate:41.67%

支持多种语言



□□

Vehicle Management System Welcome! 销售客户 | Manager | Exit

Report	Device	User
Report		
Quick Report		
Mileage Summary		
Mileage Daily		
Track Detail		
Speed Report		
Online Summary		
IO Alarm Report		
Alarm Report		
Storage Report		
Upgrade Report		
Fuel Report		
Park Report		
Geo Fencing Report		
3G Flow Report		
Extend Report		
Dispatch Report		

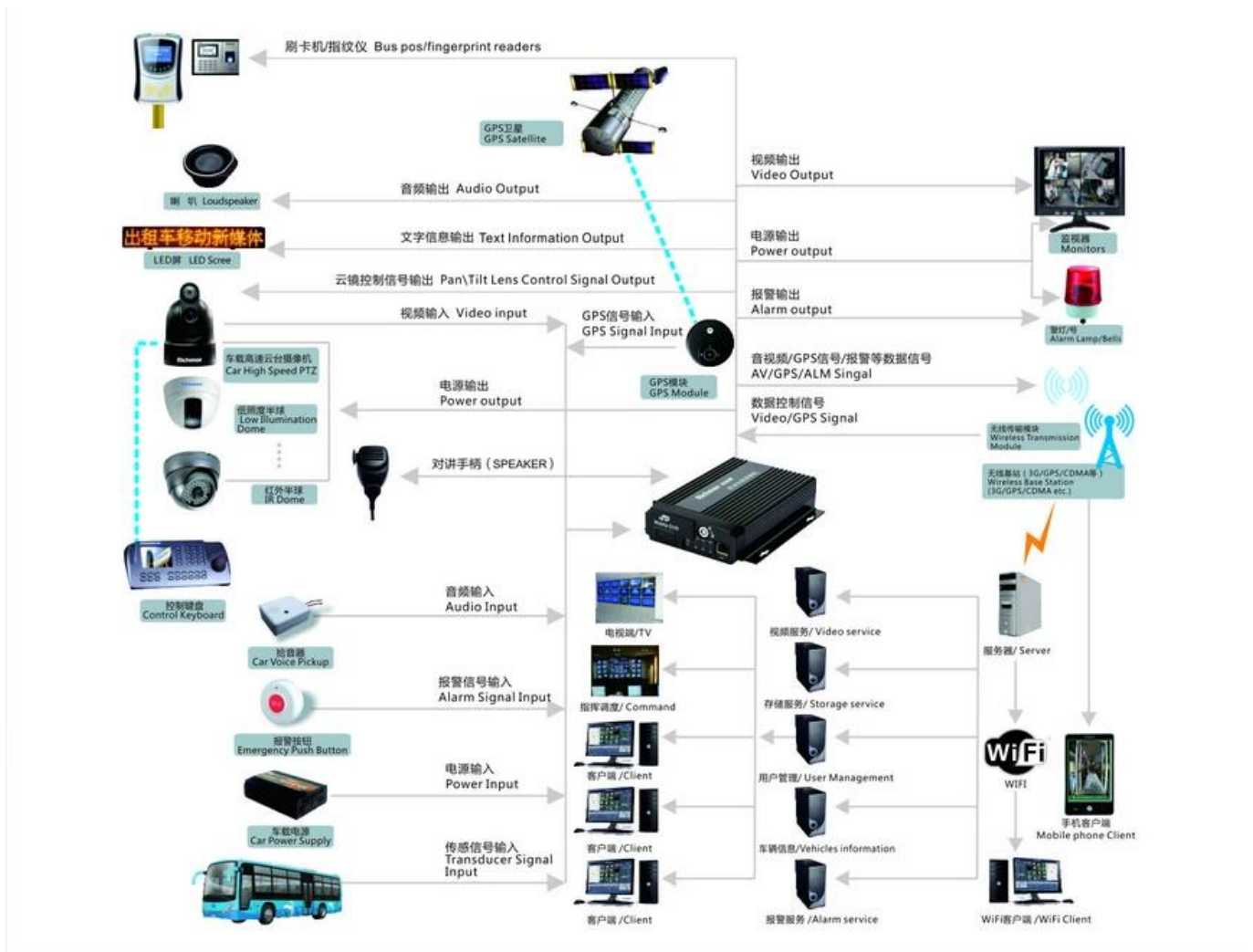
Mileage Summary

Begin Time: 2016-01-08 00:00:00 To: 2016-01-08 16:27:09

Device: All Devices

Index	Vehicle	Total Mileage (KM)	Begin Time	Start Mileage (KM)	Start Position	End Time	End Mileage (KM)
1	粤EX3114	174.88	2016-01-08 09:03:32	22.95	22.534264, 114.006444	2016-01-08 16:25:41	157.83
2	粤EX3130	202.07	2016-01-08 07:33:17	18.1	22.884299, 112.892602	2016-01-08 16:25:28	171.57
3	24012	277.42	2016-01-08 07:09:55	23.41	23.369562, 116.675227	2016-01-08 14:57:24	300.83
4	冀A76248	97.4	2016-01-08 00:00:25	299.97	41.572469, 118.786245	2016-01-08 09:42:39	41.09
5	24023	0	2016-01-08 00:00:07	16.26	37.758759, 120.731127	2016-01-08 16:19:07	16.26
6	鲁QW5387	416.36	2016-01-08 06:09:54	96.66	35.461432, 117.643793	2016-01-08 16:20:11	92.83
7	鲁J81712	120.98	2016-01-08 04:48:40	26.51	35.876478, 117.681941	2016-01-08 14:25:07	144.92
8	粤H65250	45.81	2016-01-08 00:00:03	139.13	22.654394, 112.498593	2016-01-08 16:15:15	115.82
9	粤H65153	40.61	2016-01-08 00:00:27	92	22.854197, 112.497665	2016-01-08 16:11:28	73.72
10	粤H65368	111.72	2016-01-08 00:00:15	145.61	22.654321, 112.498645	2016-01-08 16:24:48	93.9
11	粤H65010	52.02	2016-01-08 00:00:10	93.24	22.854234, 112.497795	2016-01-08 16:15:55	57.92
12	鲁AA3683	855.08	2016-01-08 00:00:29	354.36	35.950843, 117.659700	2016-01-08 16:24:44	1009.74
13	24058	224.42	2016-01-08 07:00:58	44.57	37.949788, 118.844070	2016-01-08 16:17:34	60.4
14	28999	2.36	2016-01-08 13:13:09	17.6	28.734420, 121.235847	2016-01-08 13:57:27	19.81
15	01568	369.29	2016-01-08 00:00:54	51.04	33.733305, 115.868921	2016-01-08 16:03:58	420.33

□□□□□□□□ DVR



□□□□□□

Product Introduction



7104/7204
720P/1080P
Series-AHD
4CH (Top Sale)



7105 Series-
AHD 5CH



9108 Series-
8ch NVR
/9204 Series-
4ch NVR



8114 Series-
AHD 4CH



7008 Series-
D1/720P 8CH

HDD Mobile DVR Series

Product Introduction



210 Series-
AHD 4CH
(Top Sale)



210 Series

Product Introduction



PTZ
HD Camera
Series



Car Camera
Series

Vehicle Camera



overseasales-2@rcmccctv.com

Skype rcmcctvsales2

QQ

2355778097

MB / whatsapp +86 18929314790