

3G 4G 1080p 2tb VGA 5ch dvr Romote

RCM-MDR 7105

Romote 3G 4G GPS WIFI 5CH 1CH IPC



 功能特点 Features



实时监控, GPS定位
Real-time monitoring,
GPS positioning

身份验证, 人数统计
Two-factor authentication

采用高压压缩比, 图像清晰的H.264编码格式, 支持开机录像、定时录像及报警录像, 支持ACC熄火延时录像。内置GPS全球定位系统, 可通过3G网络远程查看实时视频, 车辆位置, 回放历史录像。支持手机远程监控。
Adopting H.264 Video compression with high resolution, ACC on/off, Timer Recording, ACC Delay Recording Mode supported. Built-in GPS Tracking system, Real time video stream, Vehicle Position, Video Replay can be viewed through 3G Network, Support Mobile Phone remote Monitor.



可连接刷卡器验证身份, 统计数据, 避免人工统计时出现失误。提供每个停靠站点实时的上下学生人数, 避免漏接学生, 以及把学生遗留在车内, 造成事故。

Combine with Card Equipment for authenticate information and counting, avoid artificial statistical mistake, offer the students get on/off real time number at each station, avoid the accident caused by missing students or leaving students in the carriage.

语音功能 Voice features



可进行语音电话, 网络对讲, 声音广播。实现管理中心和车辆即时通讯。支持VOIP, 3G Intercom, Broadcast realize Center office communicate with Driver in real time.

行车记录, 驾驶行为管理
Driving behavior management



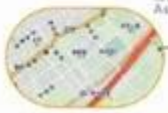
对司机的不良行为进行监督, 比如经常超速、急加速、急减速、急刹车等容易对车内学生造成危险的行为; 并对其进行评测, 预防安全隐患发生。
Supervise driver's bad behavior, such as: over-speed, acceleration, decelerate urgently, brakes etc dangerous behavior for students, Driver's Performance evidence.



短信提醒
Assured SMS alerts

车载智能系统会根据需要向家长发送孩子上下车短信, 包括什么时间、在哪里上车及下车, 让家长及时、快捷的了解学生安全状况, 有利于学生接送时间的精确控制。

Intelligent vehicle system, students get on/off bus information sent to parents by SMS including When and where on/off, convenient for parents to know students status and easily for picking up students.



偏离报警
Yaw alarm

预先设定校车的固定行驶路线, 当校车未按照预定的行驶路线行驶时, 中心上会自动发出语音报警, 中心可与车载终端通过语音对讲进行通讯。

Geo Fence Alarm, preset driving route, when out off the line it will sound alarm automatically at center office, center can talk with the driver for the information.



Romote 3G 4G 5ch GPS WIFI / NVR 1CH IPC

Richmor

 **Factory Audit**

SMS Device configure
OTA Remote Updating
AHD 720P/960P
2TB HDD+128GB SD Card

NEW



CE

FC



Remote 3G 4G 5ch GPS WIFI / NVR 1CH IPC

Richmor

 **Factory Audit**

SMS Device configure
OTA Remote Updating
AHD 720P/960P
2TB HDD+128GB SD Card



Remote 3G 4G 5ch GPS WIFI / NVR 1CH IPC

H.264 Compression Mode, Max support 5CH Million pixels HD video surveillance/ recording/ playback (4CH real-time 720P Million Pixels AHD input or 4CH Analog Standard Definition camera input, or 2CH HD input+2CH SD input) + 1CH 1080P IP Camera input ; Exclusive pre-allocate DVR Special File System Technology,Solving repeatedly wipe cause file fragmentation, solving SD card file system collapse, data loss and cannot find SD card and file garbled, ensure the integrity of the data. 8-36V Adaptive Wide Voltage input, Super Low Power Consumption Design;HDD+SD card storage (maximum support 2TB 2.5" hard disk and 128GB SD card.) It can be completely resist car Vibration,Dust and others cause data corruption; Support GPS/BD/G-SENSOR ; High Reliability Aviation Connectors,High Cost Performance with reliable stability,simple and clear operation menu .

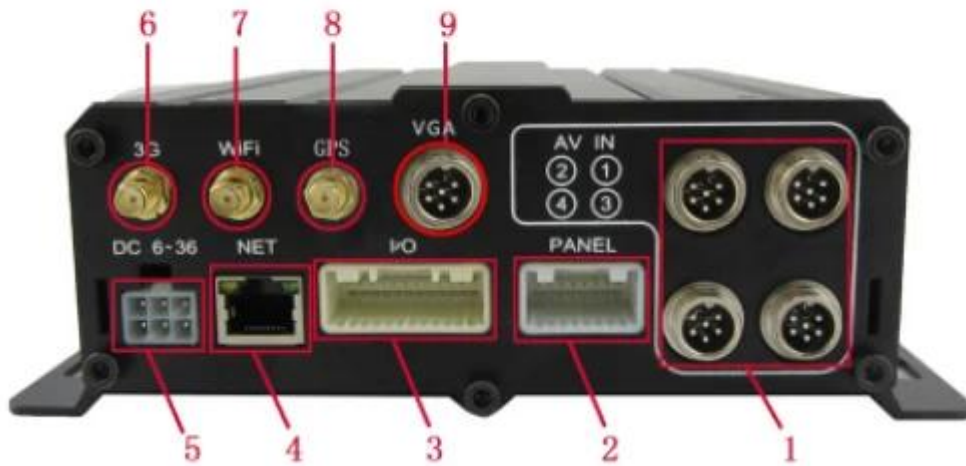
Remote 3G 4G 5ch GPS WIFI HDD MOB 1CH IPC DVR / NVR

Front LED Indicators



Remote 3G 4G 5ch GPS WIFI / NVR 1CH IPC

Back Panel IO Indicators



Richmor GUI

The main menu includes: Search, System setup, Rec setup, Network setup, Alarm setup, Peripheral setup, System Tools, System Information, as below:



RCM-MDR7105

OS	Linux	
OSD	ID	
GUI		
Video	Channels	4CH 720p / 4CH / 2CH + 2CH + 1CH 1080P 1.0Vp-p 75Ω
	Outputs	2CH CVBS + 1CH VGA 1.0Vp-p 75Ω 1CH 4CH
	Inputs	1 4 5 /
	Resolutions	1080P / 720P / D1 / HD1 / CIF MAX 4 720P + D1 1080P / 4
	Frame Rates	1-4 1
	Standards	PAL 100f / s CCIR625 line 50field; NTSC 120f / s CCIR525 60; CIF 256Kbps 1.5Mbps 8; HD1 600Kbps 2.5Mbps 8; D1 800Kbps 3Mbps 8; 720P 4Mbps-6Mbps
	Compression	
	Audio	4CH 2CH BNC G.726 8KB / s
Inputs	7CH 1CH AD	
Outputs	2CH /	
I/O	3CH RS232 POS / / LED	
	2CH 485 PTZ	
Network	3G WCDMA CDMA2000 GPRS EDGE; 4G TDD-LTE FDD-LTE	
GPS	GPS / BD	
Display		2.5"

SD	SD	128GB SD
	USB	USB SD OTA
	Codec	H.264
	File System	FAT32
USB	USB	USB U
	Channels	4CH Replay / Stop / /
	Resolution	x 2 x 4 x 8 x 16
Power	2	
TTS	TTS	TTS
	LED	LED POS OBD
	Power	DC + 6V - + 36V <5W
Temp	Temp	-20°C - + 70°C 20 - 80
	Size	200D* 187W* 62H mm 1.90

Requirements

- 5 channels 4x720p / 4 channels / 2x2 + 1x1080P
- 3x CVBS; 1x VGA
- DVR; 8-36V; 10Amps; 12V & 5V
- UPS 8-10

6. 2+ SD 2.5" 128G SD Shock& USB

7. 2 USB

8. 9 1 + 8 2

9. 2 CAN

10.

11. GPS / BD / G-Sensor

12. 3G / 4G

13. / / ; / / POS / LED

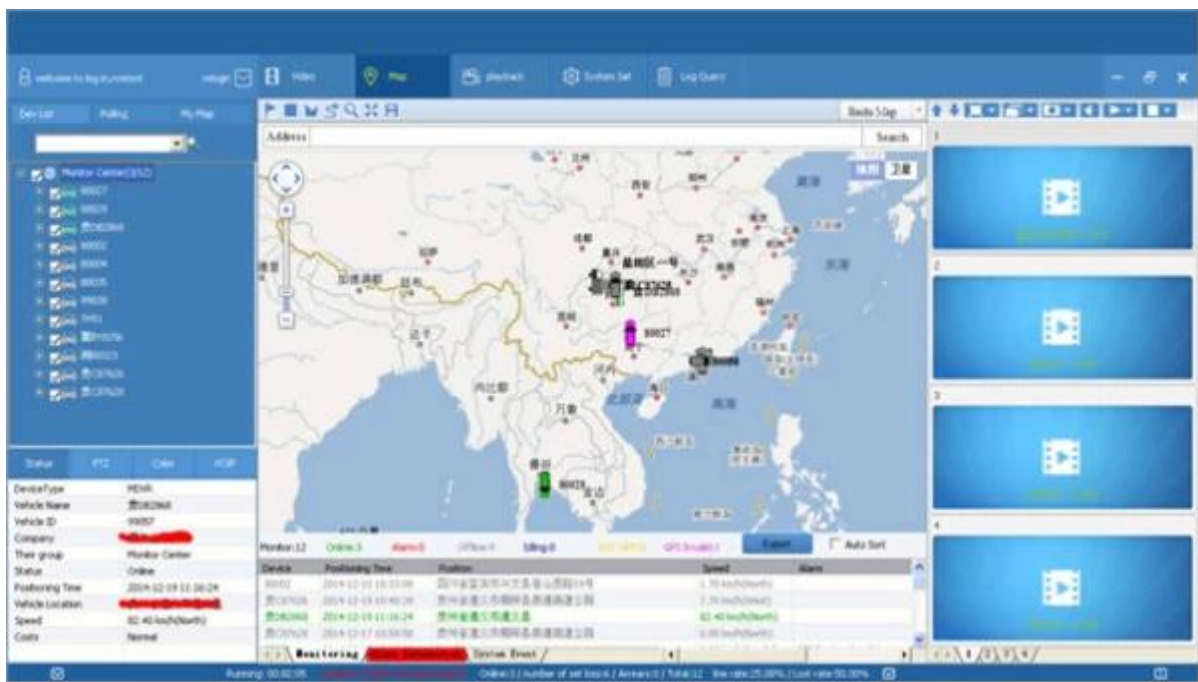
14. OTG

15. IOS / Android

16.

CMSV6 PC

CMSV6



☐☐☐☐☐☐☐ - ☐☐iPhone☐Android☐iPad☐☐

☐☐☐☐Playbac



k☐☐☐☐☐DVR☐☐☐☐

File **Video**

Directory: C: | Select Folder

Time Range: ALL | 0-2 | 2-4 | 4-6 | 6-8 | 8-10 | 10-12 | 12-14 | 14-16 | 16-18 | 18-20 | 20-22 | 22-24 | Search

Event Type: All | I/O_1 | I/O_2 | I/O_3 | I/O_4 | I/O_5 | I/O_6 | I/O_7 | I/O_8 | Emergency Button Alarm

2015
Dec.

Sun Mon Tue Wed Thu Fri Sat

0 1 2 3 4 5
6 7 8 9 10 11 12
13 14 15 16 17 18 19
20 21 22 23 24 25 26
27 28 29 30 31

Description, Begin, Duration, Event Type

Groups: 1 | Pages: 1 | < > >> | 1 | Go

00:00 02:00 04:00 06:00 08:00 10:00 12:00 14:00 16:00 18:00 20:00 22:00 24:00

All
1
2
3
4

Richmor

Vehicle Management System Vehicle | [범용공구](#) | [Manager](#) | [Exit](#)

Report | Device | User

Mileage Summary

Begin Time: 2016-01-08 00:00:00 | To: 2016-01-08 16:27:09

Device: All Devices | [Select Device](#) | [Query](#) | [Export To Excel](#) | [Export To CSV](#) | [Export To PDF](#)

Index	Vehicle	Total Mileage (KM)	Begin Time	Start Mileage (KM)	Start Position	End Time	End Mileage (KM)
1	☎EX3114	174.88	2016-01-08 09:03:32	22.95	22.52434, 114.00844	2016-01-08 16:25:41	157.83
2	☎EX3130	202.07	2016-01-08 07:33:17	18.1	22.89429, 112.89282	2016-01-08 16:25:28	171.97
3	24312	277.42	2016-01-08 07:08:55	23.41	23.36882, 116.675227	2016-01-08 14:57:24	300.83
4	☎AT8248	97.4	2016-01-08 00:00:25	299.97	41.57249, 118.788245	2016-01-08 09:42:38	41.09
5	24323	0	2016-01-08 00:00:07	18.26	37.75879, 120.731127	2016-01-08 16:19:07	18.26
6	☎YS307	416.36	2016-01-08 06:08:54	96.66	35.46142, 117.643793	2016-01-08 16:20:11	82.63
7	☎J17112	120.98	2016-01-08 04:48:40	28.51	35.87647, 117.681843	2016-01-08 14:25:07	144.92
8	☎NS250	45.61	2016-01-08 00:00:03	139.13	22.65429, 112.488993	2016-01-08 16:15:15	115.82
9	☎NS153	48.61	2016-01-08 08:00:27	92	22.654197, 112.497965	2016-01-08 16:11:28	73.72
10	☎NS368	111.72	2016-01-08 00:00:15	145.61	22.654321, 112.488645	2016-01-08 16:24:48	93.9
11	☎NS110	52.02	2016-01-08 00:00:10	93.24	22.65429, 112.487795	2016-01-08 16:15:55	57.92
12	☎A3883	855.08	2016-01-08 00:00:29	354.36	35.95843, 117.658700	2016-01-08 16:24:44	1009.74
13	24358	224.42	2016-01-08 07:00:58	44.57	37.94878, 118.844370	2016-01-08 16:17:34	60.4
14	28999	2.38	2016-01-08 13:13:09	17.6	28.73442, 121.235817	2016-01-08 13:57:27	19.66
15	01566	369.29	2016-01-08 00:00:54	51.04	33.73305, 115.868921	2016-01-08 16:03:58	420.33





AV Input Cables



AV Output Cable



IO Cables



Power Cable



Remote Control



CD (Manual & Software inside)

□□



Richmor Brand Package



Standard Package

DHL / UPS

2-5

5-10



1. supprt

2.OEM / ODM



CUSTOMER SATISFACTION

- Excellent Aftersale service
- 12 months warranty
- 24 hours customer service
- We understand the importance of our customers

Certification



Richmor

CPSE2012 in Shenzhen



CPSE2013

10.29-10.31

4 Booth we have

Welcome you !!!



CPSE2012-- Guangdong TV Report-Shenzhen Richmor



□□□□□□□□





EXCELLENT SUPPORT



Richmor 全球代理商网络

Richmor 全球代理商网络

Richmor overseasales-7@rcmctv.com Skype: [rcmctvsales7](#)