

RCM-MDR210 4CH sd 4g 3g 4ch 4ch video,rcm210wgdx

(RCM-MDR210 4ch)

RCM-MDR210

4ch 720P 3G 4G 4ch

1. h. 264 4CH, 4CH real-time 720P 4CH;
2. dvr 4CH, 4CH sd 4CH, 4CH sd 4CH, 4CH;
3. 10-36V 4CH, 4CH;
4. sd 4CH (2SD 4CH, 4CH 128GB) 4CH;
5. 4CH gps/bd/g 4CH; 4CH;
6. 4CH, 4CH, 4CH

rcm-mdr 210 4ch	
4ch	4ch
rcm-mdr210xxxi	4CH, g 4CH, 4CH sd 4CH
rcm-mdr210xgxx	gps, g 4CH, 4CH sd 4CH
rcm-mdr210wgsx	3G[4G]gps[4G] 4CH sd 4CH
rcm-mdr210fgsx	3G[4G]4G[4G]gps[4G] 4CH sd 4CH
rcm-mdr210wgdx	3G[4G]wifi[4G]gps[4G] 4CH sd 4CH
rcm-mdr210fgdx	3G[4G]4G[4G]wifi[4G]gps[4G] 4CH sd 4CH

RCM-MDR210

4ch 720P 3G 4G 4ch



Device back view

4ch 720P 3G 4G □□□□□□



Device front view

4ch 720P 3G 4G

LED Indicators



4ch 720P 3G 4G

Back Panel



RCM-MDR210

		linux
		/
		h. 264
osd		, id
gui		

□□□□	□□	20% □80%
	□□	□□/□□□2□□□□□□
□□	□□	112 (w) x36 (h) x138 (d) □□
□□	□□	360g

Richmor □□ gui

The main menu includes: Search, System setup, Rec setup, Network setup, Alarm setup, Peripheral setup, System Tools, System Information, as below:



ric□□□□dvr mileage s□□

- Report
- Quick Report
- Mileage Summary
- Mileage Daily
- Track Detail
- Speed Report
- Online Summary
- ID Alarm Report
- Alarm Report
- Storage Report
- Upgrade Report
- Fuel Report
- Park Report
- Geo Fencing Report
- 3G Flow Report
- Extend Report
- Dispatch Report

Mileage Summary

Begin Time: 2016-01-08 00:00:00 To: 2016-01-08 16:27:09

Device: All Devices [Select Device] [Query] [Export To Excel] [Export To Csv] [Export To Pdf]

Mileage Summary

Index	Vehicle	Total Mileage(KM)	Begin Time	Start Mileage(KM)	Start Position	End Time	End Mileage(KM)
1	鄂D3114	174.86	2016-01-08 08:00:30	22.95	22.52429, 114.00844	2016-01-08 16:25:41	157.83
2	鄂D3130	202.07	2016-01-08 07:30:17	18.1	22.86429, 112.88282	2016-01-08 16:25:28	171.57
3	24012	277.42	2016-01-08 07:09:55	23.41	23.369582, 116.675227	2016-01-08 14:57:24	300.63
4	鄂A78248	97.4	2016-01-08 06:00:25	236.97	41.572492, 116.788245	2016-01-08 06:42:36	41.09
5	24023	0	2016-01-08 06:00:07	16.26	37.158159, 120.731127	2016-01-08 16:19:07	16.26
6	鄂QF5387	416.36	2016-01-08 06:09:54	96.88	35.481432, 117.843783	2016-01-08 16:28:11	92.83
7	鄂B1712	120.98	2016-01-08 04:48:43	26.51	36.876478, 117.681941	2016-01-08 14:25:07	144.92
8	鄂B2250	45.81	2016-01-08 06:00:03	138.13	22.654294, 112.489583	2016-01-08 16:15:15	115.82
9	鄂B5153	48.64	2016-01-08 06:00:27	82	22.654187, 112.487565	2016-01-08 16:11:28	73.72
10	鄂B3268	111.72	2016-01-08 06:00:15	145.61	22.654201, 112.488545	2016-01-08 16:24:48	93.9
11	鄂B5033	52.02	2016-01-08 06:00:10	83.24	22.654236, 112.487785	2016-01-08 16:15:55	57.82
12	鄂A3683	695.08	2016-01-08 06:00:29	354.36	36.950643, 117.688781	2016-01-08 16:24:44	1089.74
13	24058	224.42	2016-01-08 07:00:58	44.57	37.949788, 116.844073	2016-01-08 16:17:34	60.4
14	28999	2.36	2016-01-08 13:13:09	17.6	28.734423, 121.238947	2016-01-08 13:57:27	19.81
15	00588	369.29	2016-01-08 06:00:54	51.84	33.733305, 115.863821	2016-01-08 16:00:58	420.33

□□□□□□□□

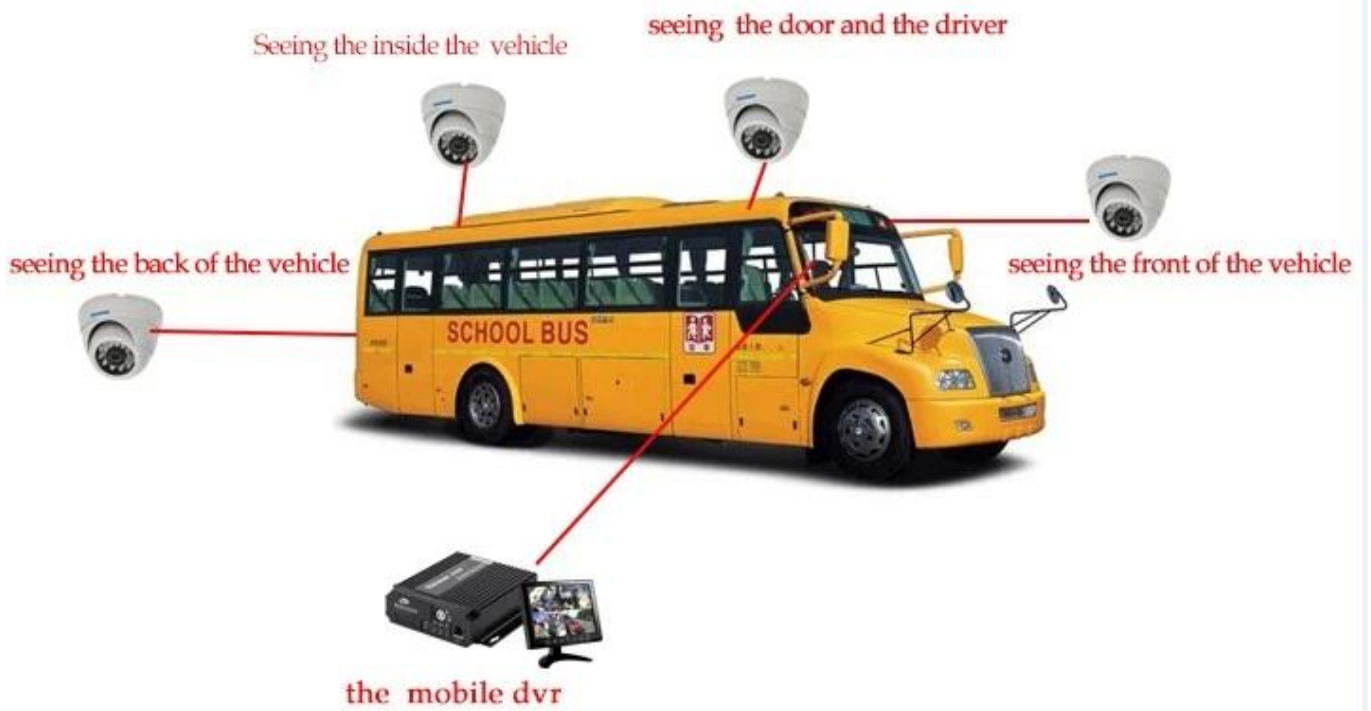
The screenshot shows a vehicle monitoring software interface. At the top, there's a navigation bar with 'Home', 'Map', 'Playback', 'System Set', and 'Log Query'. Below this, there's a 'Dev List' sidebar on the left showing a list of vehicles under 'Monitor Center(242)'. The main area is a map of China with a red dot indicating a vehicle's location. Below the map, there's a detailed view of a vehicle with the following information:

- Monitor ID: 0002
- Online: 2
- Alarm: 0
- Offline: 0
- Speed: 0 km/h
- GPS: Disabled

At the bottom, there's a table showing the vehicle's history of location and speed data:

Device	Positioning Time	Position	Speed	Alarm
鄂D3114	2016-12-09 16:53:08	鄂州华容县武穴市岳阳市119号	1.70 km/h(0.04)	
鄂D3130	2016-12-09 16:46:38	鄂州华容县武穴市岳阳市119号	7.76 km/h(0.04)	
鄂B2250	2016-12-09 11:46:24	鄂州华容县武穴市岳阳市119号	82.46 km/h(0.04)	
鄂B2250	2016-12-07 16:58:58	鄂州华容县武穴市岳阳市119号	0.88 km/h(0.04)	

3G 4G



功能特点 Features



实时监控, GPS定位
Real-time monitoring,
GPS positioning



身份验证, 人数统计
Two-factor authentication



语音功能 Voice features



行车记录, 驾驶员行为管理
Driving behavior management



短信提醒
Assured SMS alerts



偏航报警
Yaw alarm



校车卫士

采用高压压缩比, 图像清晰的H.264编码格式, 支持开机录像、定时录像及报警录像, 支持ACC熄火延时录像。内置GPS全球定位系统, 可通过3G网络远程查看实时视频, 车辆位置, 回放历史录像。支持手机远程监控。 Adopting H.264 Video compression with high resolution,ACC on/off, Timer Recording,ACC Delay Recording Mode supported, Built-in GPS Tracking system,Real time video stream,Vehicle Position,Video Replay can be viewed through 3G Network,Support Mobile Phone remote Monitor.

可连接刷卡器验证身份, 统计数据,避免人工统计时出现失误。提供每个停靠站点实时的上下学生人数, 避免漏接学生, 以及把学生遗留在车内, 造成事故。 Combine with Card Equipment for authenticate information and counting, avoid artificial statistical mistake,offer the students get on/off real time number at each station,avoid the accident caused by missing students or leaving students in the carriage.

可进行语音电话, 网络对讲, 声音广播。实现管理中心和车辆即时通讯。 Support VOIP,3G Intercom,Broadcast realize Center office communicate with Driver in real time.

对司机的不良行为进行监督, 比如经常超速、急加速、急减速、急刹车等容易对车内学生造成危险的行为; 并对其进行评测, 预防安全隐患发生。 Supervise driver's bad behavior, such as:over-speed, acceleration, decelerateurgently, brakes etc dangerous behavior for students,Driver's Performance evidence.

车载智能系统会根据需要向家长发送孩子上下车短信, 包括什么时间、在哪里上车及下车, 让家长及时、快捷的了解学生安全状况, 有利于学生接送时间的精确控制。 Intelligent vehicle system,students get on/off bus information sent to parents by SMS including When and where on/off,convenient for parents to know students status and easily for picking up students.

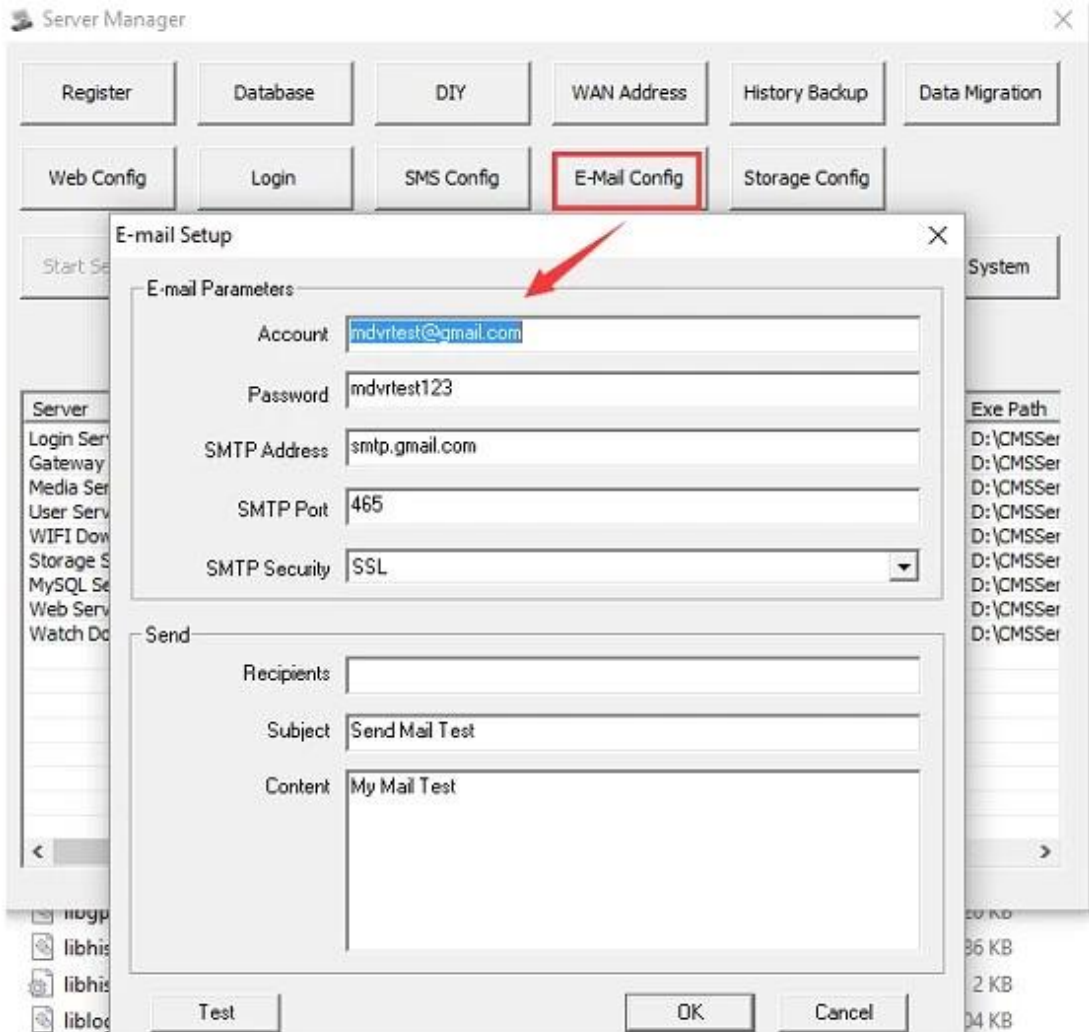
预先设定校车的固定行驶路线, 当校车未按照预定的驾驶路线行驶时, 中心会上会自动发出语音报警, 中心可与车载终端通过语音对讲进行通讯。 Geo Fence Alarm,preset driving route,when out off the line it will sound alarm automatically at center office,center can talk with the driver for the information.

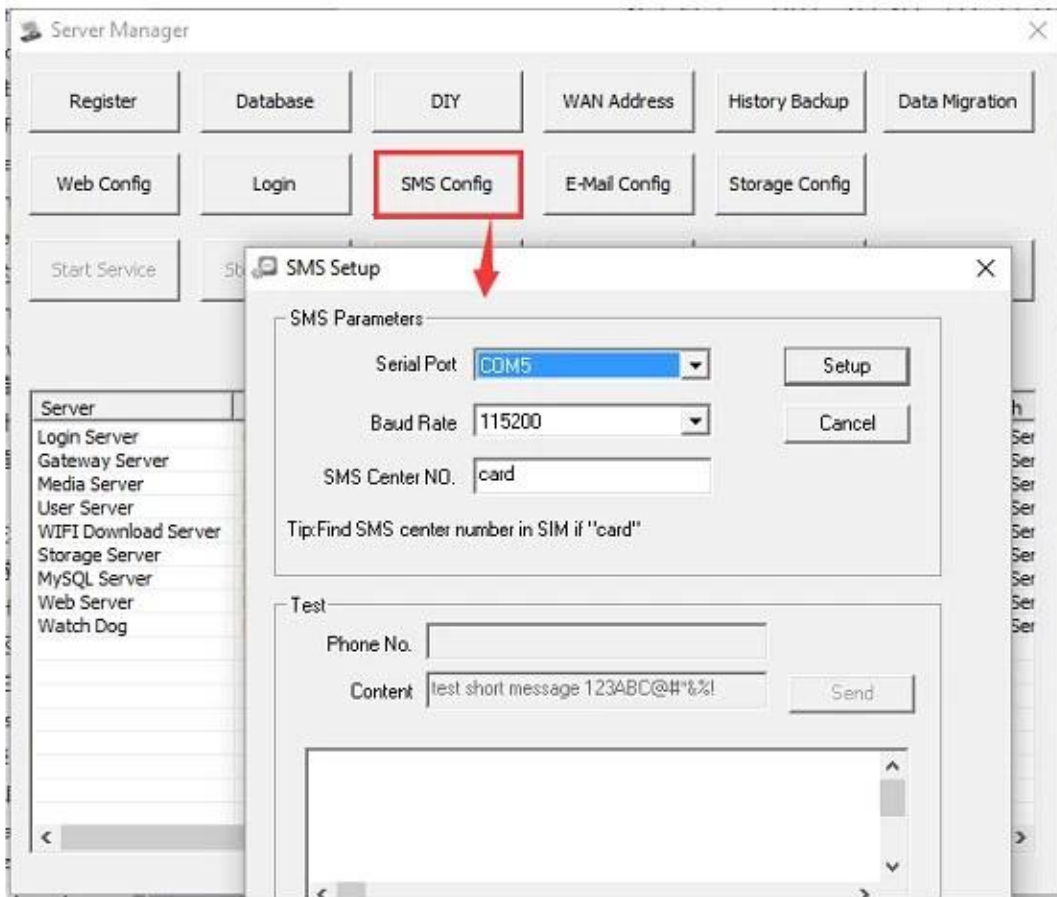
Richmor 视频监控

出租车-锐驰曼精致小巧功能强



车牌号	司机姓名	司机电话	司机地址	司机状态	司机备注
京A12345	张三	13800138000	北京市朝阳区	在线	司机张三备注
京A6789	李四	13900139000	北京市朝阳区	离线	司机李四备注
京A1111	王五	13700137000	北京市朝阳区	在线	司机王五备注
京A2222	赵六	13600136000	北京市朝阳区	离线	司机赵六备注
京A3333	孙七	13500135000	北京市朝阳区	在线	司机孙七备注
京A4444	周八	13400134000	北京市朝阳区	离线	司机周八备注
京A5555	吴九	13300133000	北京市朝阳区	在线	司机吴九备注
京A6666	郑十	13200132000	北京市朝阳区	离线	司机郑十备注





☐☐ guides

☐☐

1☐☐, ☐☐☐☐☐☐, ☐ av ☐☐/io ☐☐/☐☐☐/☐☐☐

☐☐☐☐☐☐☐☐☐☐ Richmor ☐☐, ☐☐☐☐☐☐☐☐☐



Richmor Brand Package



Standard Package

□□□□

□□□□

□□□□□□

□□□□3-5 □□□□□□□□□□□□

b. □□□5-10 □□□□□□□□□□□□□□

□:

- 1.Order □2□□□□□□□□□□ done,48 □□□□;
- 2.Related □□□□□□□□□□, □□□□□;
- 3.All □□□□ dhl/tnt/ups/ems/□□□□/□□□□□□□□□□□□;

□□□□

1□□□;□□□□;

2.30% □□, □□□□□□□□

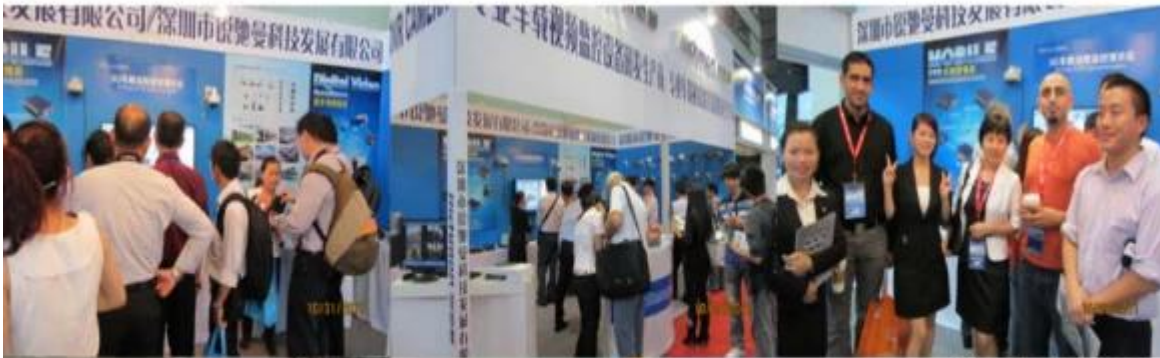
□:

Certification



Richmor

CPSE2012 in Shenzhen



CPSE2013

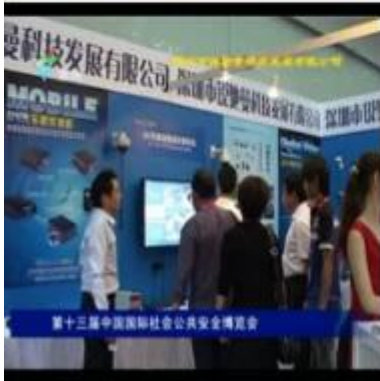
10.29-10.31

4 Booth we have

Welcome you !!!



CPSE2012-- Guangdong TV Report-Shenzhen Richmor



□□□□ & □□:



EXCELLENT SUPPORT



☐☐☐

☐☐☐☐☐☐☐☐, ☐☐☐☐☐!!!

☐☐☐ Richmor ☐☐☐☐ Co. ☐☐☐☐

☐☐☐☐: overseasales-2@rcmcctv.com overseasales-2@rcmcctv

skype: [rcmcctvsales2](https://www.skype.com/people/rcmcctvsales2)

qq: [2355778097](https://www.qq.com/number/2355778097)

mb/whatsapp: [+86 18929314790](https://www.whatsapp.com/business/profile/8618929314790)