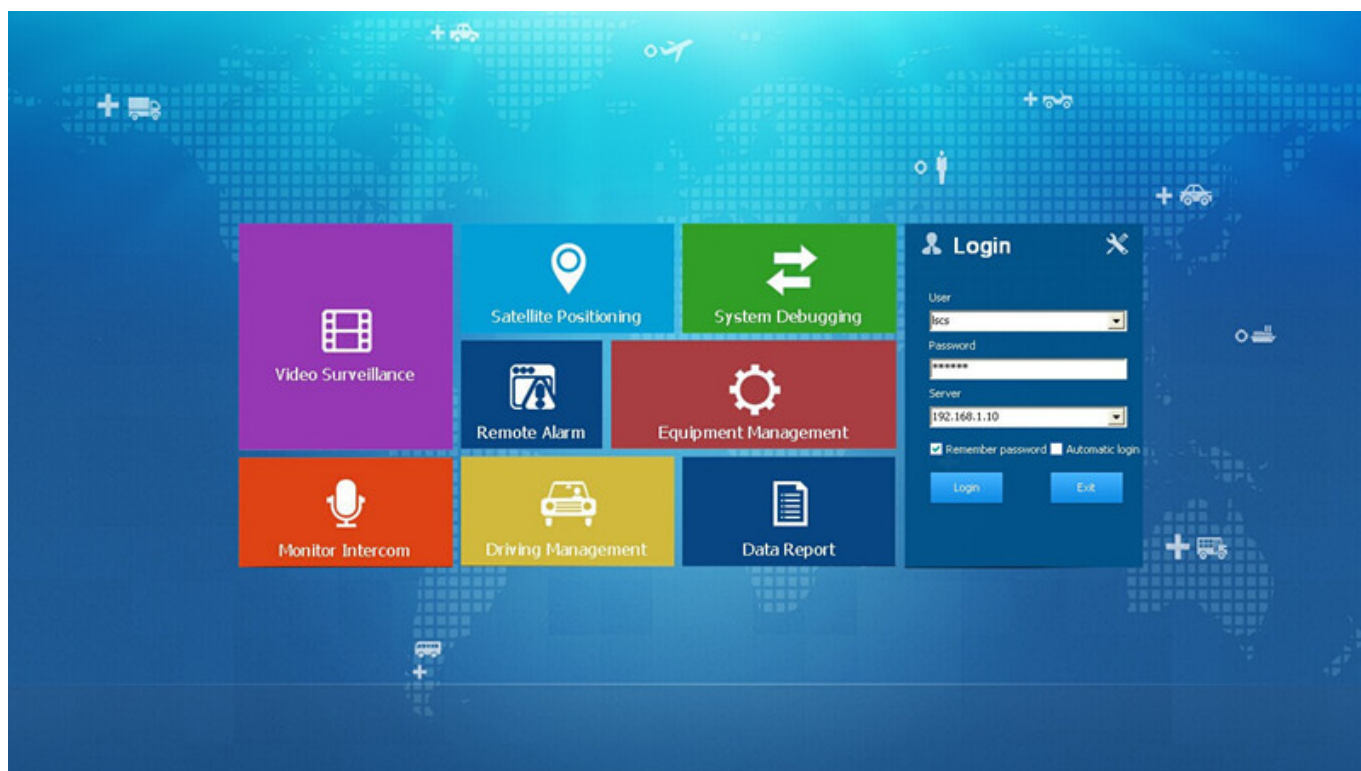


Product Description



| Device | Positioning Time | Position | Speed | Alarm |
|---------|---------------------|------------------|-------------------|-------|
| 80002 | 2014-12-10 18:33:08 | 四川省宜宾市兴文县香山西路59号 | 1.70 km/h(North) | Alarm |
| 贵C87626 | 2014-12-19 10:48:39 | 贵州省遵义市桐梓县崇遵高速公路 | 7.70 km/h(West) | |
| 贵D82868 | 2014-12-19 11:16:24 | 贵州省遵义市遵义县 | 82.40 km/h(North) | |
| 贵C87628 | 2014-12-17 10:58:58 | 贵州省遵义市桐梓县崇遵高速公路 | 0.00 km/h(North) | |



GPS Positioning & Overspeed Alarm

GPS data including Latitude, Longitude, and speed of vehicles will be saved along with video footages on to the SD card or hard disk, while playing the footages you can also check the the locations of your vehicles on map. Besides, alerts would be triggered while driving overspeed.



2TB + 128GB Large Capacity Storage

Up to 2TB hard disk & 128GB SD Card supported at the same time for saving video footages, once the disk is full, the DVR will overwrite the earlier files to make space for new files, which means you can have the DVR recording all the time to look after your vehicle.

Alarm I/O Alarm & Alarm Recording

The DVR supports 6 I/O inputs and 1 alarm output. You can set those Inputs to record vehicle braking, turning left/ right, door opening and more. Also, they can be simply used as a Panic Button, or work with other external sensors to trigger recording or send message to the monitor center.



5CH 720P HD+1080P Car HDD Mobile DVR

HDD MDVR

Main Features

*HIS Solution,H.264 Compression,support 5ch Million Pixels video surveillance, video recording and playback (4CH real-time 720p million Analog HD input and analog standard definition camera + 1CH 1080P network camera input);

*3CH video output (2CH CVBS video output,Support front and rear output; 1CH VGA output for optional)

*Exclusive pre-allocate DVR Special File System Technology,Solving repeatedly wipe cause file fragmentation, solving storage file system crash, data loss and cannot find storage media and file garbled, ensure the integrity of the data.

*6-36V wide voltage with low power consumption. Support Reverse Protection,over-voltage/over-current protection.Output max to 10Amps current, support 12V & 5V peripheral equipment power supply. Ultra low power design;

*Unique UPS Technology ensures the integrity of record when power failure occurs,even can last for 8-10s.

*HDD+SD Card Storage (Support 2.5" HDD, max 128G SD Card) protect from Shock & Dust damage;support USB port data backup and device update;

*Support 2 USD ports, data backup and equipment upgrades.

*Support 9CH alarm input (1CH Analog input + 8CH IO alarm input),2CH Independent alarm output

*Support HDD heating functions,can work in harsh environment.

*Support GPS/BD/G-Sensor Extension module;

*Realize real-time monitor through 3G/4G;

*Support Broadcast/Intercom/Text sent etc;can add oil sensor/temperature sensor/POS/LED Advertisement Panel;

*Support OTG device upgrade automatically, , device can automatically upgrade version update, maintenance is more convenient

*Support IOS/Android Phone Remote monitor

*High reliability aviation connectors, high cost performance, stable and reliable.

Specifications

| Item | Parameter |
|-----------------------|---|
| OS | Linux |
| Language | English/Chinese/Customized |
| Video Compression | H.264 Compression |
| OSD | Overlays information such as date time and vehicle ID |
| GUI | Graphical User Interface Setup system parameters with the remote control. |
| | Video Input 4CH 720P Analog High Definition video+1CH 1080P digital video input ,aviation connector, 1.0Vp-p, 75Ω |
| | Video Output 2CH CVBS output+1CH VGA output for optional,1.0Vp-p, 75Ω,Support 1CH Full Screen,4CH Screen view |
| | Preview Support 1 channel and 4 channels preview, 5 channels splice preview Support Manual/Alarm Trigger full screen preview |
| | Resolution 1080P/720P/D1/HD1/CIF, MAX:4 channels of 720P + 1080P / 4 channels of D1 |
| Video Record System | Image Quality 1-4 levels, 1 is the highest level. PAL: 100f/s , CCIR625 line,50field; NTSC: 120f/s, CCIR525 line,60field; CIF: 256Kbps ~ 1.5Mbps, 8 level video quality optional; |
| | Video Standard HD1: 600Kbps ~ 2.5Mbps, 8 level video quality optional; D1: 800Kbps ~ 3Mbps, 8 level video quality optional; 720P: 4Mbps-6Mbps, multi level video quality optional |
| | Record Mode The default setting is auto recording after power on. Timed recording, alarm trigger recording and manual recording are supported. |
| Audio | Audio Input 4CH Aviation Plug Input |
| | Audio Output 2CH,headphone connect at front panel, BNC Connect on Back panel |
| | Compression G.726 compression, 8KB/s speed |
| Alarm Input | 7CH Alarm Input,1CH AD Input,impulse speed input,Alarm Linkage |
| Alarm Output | 2CH Alarm Output,Support Light/Sound alarm sensor,Oil/Power cut off |
| Interface | 3CH RS232, POS/Fuel Sensor/LED Advertisement Connection 2CH 485 Interface,Connect PTZ Camera |
| Wireless Transmission | Support Built in 3G transmission, WCDMA,CDMA2000,GPRS, EDGE; Built in 4G module optional, TDD-LTE, FDD-LTE |
| GPS Position | Support Built GPS/BD Module |
| | HDD Max 2.5" HDD |

| | | |
|---------------------|---------------------|--|
| Storage | SD Card | Max 128GB SD Card Mirror Recording Keep Data Safety |
| | Update | Support USB Updating, SD Card Updating,OTA Remote Updating |
| | File Format | H.264 Special FAT32 File System |
| | USB | USB Interface on Front Panel for data back up by U Disk,Hard Disk |
| | Video Search | Search By Record Time/Record Type etc |
| Record Replay | | Max support 4CH Replay /Stop/Fast/Slow at same time |
| | Playback | Support forward and backward play at the speed of: x 2,x4,x8,x16. |
| Security | User/Admin 2 Level | Different Password |
| | Voice Call | Support voice call each other |
| Optional Functions | TTS Voice Broadcast | Support TTS voice broadcast function. |
| | erial Expand | Support LED Advertisement Panel,Oil Sensor,POS,Bus Station Broadcaster,Car OBD,ect.external device |
| | Power Management | Wide Voltage.Support Timed/Delay off/ over-load/Reversing connection/voltage shortage/short circuit etc. |
| Voltage & Power | Input Voltage | DC:+6V - +36V |
| | Output Voltage | +12V,1.5A,+5V,1.5A |
| | Power | Working <5W |
| Working Environment | Temperature | -20°C - +70°C |
| | Humidity | 20% - 80% |
| Ohters | Size | 200 (D)* 187(W)* 62(H) mm |
| | Weight | 1.90 Kg |

Our Services





Advantages

Product Features:

HIS Solution,H.264 Compression,Multiple Streams record ,5CH AHD Video input, 4CH real-time 720p million Analog HD input and analog standard definition camera + 1CH 1080P network camera input,

High quality real time recording, 1080P/720P/CIF/HD1/D1 Optional, quality adjustable;

Professional Car Power Design,6-36V wide voltage,Provide reverse voltage/over-load/short circuit protection, to meet kinds of car application;

Support 12VDC output voltage,power supply for Camera/Screen etc;

Max 2TB HDD + 128GB SD Card Mirror Recording,protect DVR from shock & Dust damage;
Watchdog abnormal restart function,protect SD Card and Record;

Exclusive Pre-allocated Vehicle File System protect data completeness ;

ACC Delay off,can set 24 hours;

Unique UPS Technology ensures the integrity of record when power failure occurs,even can last for 10-15s.

Auto Record/Manual Record/Alarm Record etc working mode to meet different requirements;
Show Car status/Plate/Driving Route/Low Speed/Over Speed information for convenient management;
Support GPS/BD,3G/4G Module Optional,WIFI extend;
Strong Network,device configure via IE Web,Support SMS Get device information and configure;
Support Monitoring,Two-way Intercom, PTZ, Alarm,Over-speed,Geo Fence etc through remote control platform;
8CH IO Alarm input(Door Open,Light,Turn direction,brake,reverse etc),can linkage kinds of alarm;

2CH Alarm Output,Support Light and Sound alarm sensor,Oil/Power cut off;
High level aviation interface,easily installation and better shockproof, more stable;

Support Local Auto-photo when alarm input.

High reliable aviation connectors input/output, easy installation,stronger anti-vibration.
Easily Smart GUI Interface, saving time in device setting;
Strong Stable Application,Support 3G/4G Real-time monitor, talk-back,playback,record,picture snap etc;
Updated through SD or OTA Remote Automatic updating,more stable and convenient;Support Phone Remote Monitor,Phone Calling etc;

Support PTZ/POS/Oil Sensor/LED Advertisement Panel etc;

Support Ministry of Transport Standard Agreement

Be Customized according your request;

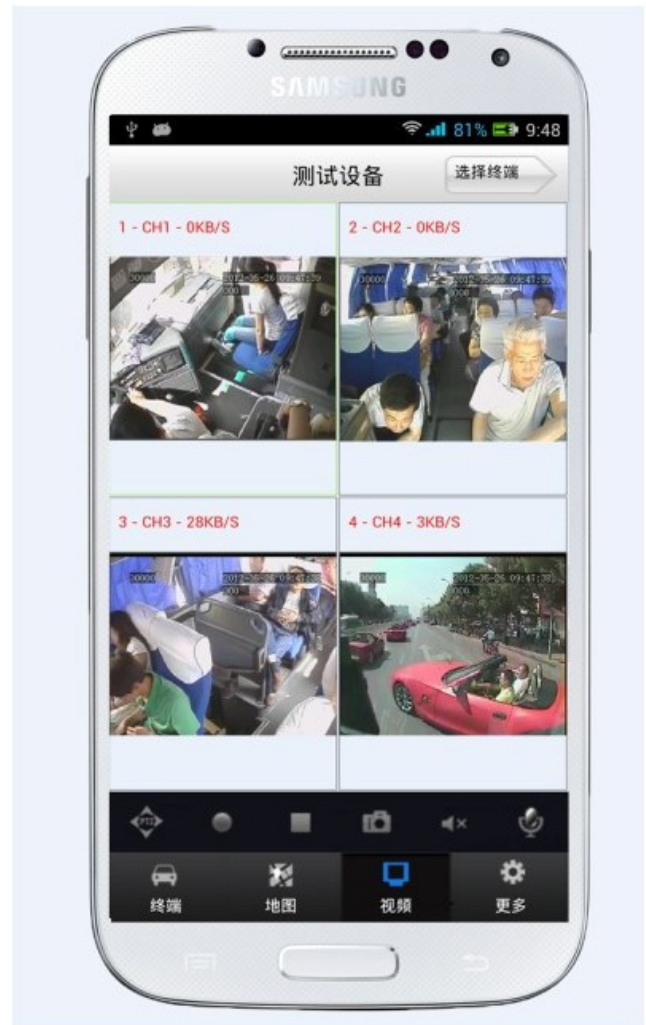
PC&Phone Monitoring

CMSV6 Interface

**CMSV6 In Mobile Phone
Have all in the palm of your**

hand

Real-time monitoring via Mobile Phone
Support iPhone, Android, iPad system



Video & Audio Monitoring **Online Vehicle** **GPS**
Satellite Map **Video Storage**
PTZ control **Tracking Display** **Picture**
Snapshot **Voice intercom**

FQA

Q: During playback, the map doesn't show?
A: Possible reasons are as follows;

1.Net cable did not connect to PC;

2.Net works, but the computer can not get to the Internet;

Q: When SD card and HDD records, How is the record coverage?

A: SD card and HDD will record circularly for each other. When they are full, they will delete the original video records respectively.

Q: The device was opened, HDD was installed, but the device can not record successful.

A: 1.Check the HDD/SD Card was formatted or not, the unformatted HH/SD Card can not be used. Enter into the Main Menu - System Setup - Formatting the new installed HDD/SD Card.

2. If the recording channel is closed, if set the timing recording, it can not recording when it beyond the period of timing recording.

3. If the HDD is connect well, if the HDD/SD light is on.



Richmor Brand Package



Standard Package



Shipping

Strong cooperated with DHL/UPS Etc for fast and safety delivery.

a. 2-5 days after payment cleared for sample order.

b. 5-10 days after payment cleared depends on order quantity for bulk order.



Exhibition



CPSE2013

10.29-10.31

4 Booth we have

Welcome you !!!



CPSE2012-- Guangdong TV Report-Shenzhen Richmor



VERIFICATION OF CONFORMITY

Verification of Conformity
Reference No.: LC013042070

Responsible Party: Shenzhen Rishouo Technology Development Co., LTD.
Address: 2F No.43 West Longgang Road, Longhua New District, Shenzhen, China
Product: Camera
Model No.: RCM-IP2110, RCM-IP2110R, RCM-IP2110L, RCM-IP2110S, RCM-IP2110M, RCM-IP2110N, RCM-442, RCM-442L, RCM-442R, RCM-442S, RCM-442M, RCM-442N, RCM-442L, RCM-442S, RCM-442M, RCM-442N, RCM-442R, RCM-442S, RCM-442M, RCM-442N
Trade Mark: Rishouo
Standards: FCC CFR 47 PART 15 Subpart B, 247.403-247.409

Required notes:
This device is in accordance with Part 15 of the FCC Rules and Regulations for radio frequency devices. Operation of this product is subject to the following two conditions: (1) this device may not cause harmful interference, and (2) this device must accept any interference received, including interference that may cause undesired operation. This device was tested in accordance to the applicable FCC Rules and Regulations. The method of testing was in accordance to the most accurate measurement standards possible, and that all necessary steps have been followed to assure that all production units of the same equipment will continue to comply with the Federal Communications Commission's requirements.

Shenzhen LCC Compliance Testing Laboratory Ltd.
17, Jingqun Industrial Park, Tingle Road, Bao'an Dist., Bao'an District, Shenzhen, Guangdong, China
Tel: 867573-8284732 Fax: 867573-8284732
Http://www.lcc-test.com Email: info@shenzhenlcc.com.cn
Manager April 16, 2013

VERIFICATION OF CONFORMITY

Verification of Conformity
Reference No.: LC013042070

Responsible Party: Shenzhen Rishouo Technology Development Co., LTD.
Address: 2F No.43 West Longgang Road, Longhua New District, Shenzhen, China
Product: Mobile DVR
Model No.: RCM-MD0300, RCM-MD0300L, RCM-MD0300R, RCM-MD0300M, RCM-MD0300N, RCM-MD0300S, RCM-MD0300M, RCM-MD0300N, RCM-MD0300R, RCM-MD0300S
Trade Mark: Rishouo
Standards: FCC CFR 47 PART 15 Subpart B, 247.403-247.409

Required notes:
This device is in accordance with Part 15 of the FCC Rules and Regulations for radio frequency devices. Operation of the product is subject to the following two conditions: (1) this device may not cause harmful interference, and (2) this device must accept any interference received, including interference that may cause undesired operation. This device was tested in accordance to the applicable FCC Rules and Regulations. The method of testing was in accordance to the most accurate measurement standards possible, and that all necessary steps have been followed to assure that all production units of the same equipment will continue to comply with the Federal Communications Commission's requirements.

Shenzhen LCC Compliance Testing Laboratory Ltd.
17, Jingqun Industrial Park, Tingle Road, Bao'an Dist., Bao'an District, Shenzhen, Guangdong, China
Tel: 867573-8284732 Fax: 867573-8284732
Http://www.lcc-test.com Email: info@shenzhenlcc.com.cn
Manager April 16, 2013

CERTIFICATE OF CONFORMITY
Reference No.: LC013042070

Applicant: Shenzhen Rishouo Technology Development Co., LTD.
Address: 2F No.43 West Longgang Road, Longhua New District, Shenzhen, China
Product: Mobile DVR
Models: RCM-MD0300, RCM-MD0300L, RCM-MD0300R, RCM-MD0300M, RCM-MD0300N, RCM-MD0300S, RCM-MD0300M, RCM-MD0300N, RCM-MD0300R, RCM-MD0300S
Trade Mark: Rishouo

The submitted products have been tested by us with the listed standards and found in compliance with the following European Directives:
The EMC Directive 2014/53/EU
EN 55022: 2012, EN 55024: 2010

The test was performed in normal operation mode. The test results apply only to the particular sample tested and to the specific tests carried out. This certificate applies specifically to the sample investigated in our test reference number only.
The CE markings as shown below can be affixed to the product after presentation of necessary technical documentation.
Other relevant Directives have to be observed.

CE

Shenzhen LCC Compliance Testing Laboratory Ltd.
17, Jingqun Industrial Park, Tingle Road, Bao'an Dist., Bao'an District, Shenzhen, Guangdong, China
Tel: 867573-8284732 Fax: 867573-8284732
Http://www.lcc-test.com Email: info@shenzhenlcc.com.cn
Manager April 16, 2013

CERTIFICATE OF CONFORMITY

CERTIFICATE of Conformity
Reference No.: LC0130420825

Applicant: Shenzhen Rishouo Technology Development Co., LTD.
Address: 2F No.43 West Longgang Road, Longhua New District, Shenzhen, China
Product: Camera
Models: RCM-IP2110, RCM-IP2110R, RCM-IP2110L, RCM-IP2110S, RCM-IP2110M, RCM-IP2110N, RCM-442, RCM-442L, RCM-442R, RCM-442S, RCM-442M, RCM-442N, RCM-442L, RCM-442S, RCM-442M, RCM-442N
Trade Mark: Rishouo

The submitted products have been tested by us with the listed standards and found in compliance with the following European Directives:
The EMC Directive 2014/53/EU
EN 55022: 2012, EN 55024: 2010

The tests were performed in normal operation mode. The test results apply only to the particular sample tested and to the specific tests carried out. This certificate applies specifically to the sample investigated in our test reference number only.
The CE markings as shown below can be affixed to the product after presentation of necessary technical documentation.
Other relevant Directives have to be observed.

CE

Shenzhen LCC Compliance Testing Laboratory Ltd.
17, Jingqun Industrial Park, Tingle Road, Bao'an Dist., Bao'an District, Shenzhen, Guangdong, China
Tel: 867573-8284732 Fax: 867573-8284732
Http://www.lcc-test.com Email: info@shenzhenlcc.com.cn
Manager April 16, 2013

CERTIFICATE OF CONFORMITY

CERTIFICATE of Conformity
Reference No.: LC0130420825

Applicant: Shenzhen Rishouo Technology Development Co., LTD.
Address: 2F No.43 West Longgang Road, Longhua New District, Shenzhen, China
Product: Camera
Models: RCM-IP2110, RCM-IP2110R, RCM-IP2110L, RCM-IP2110S, RCM-IP2110M, RCM-IP2110N, RCM-442, RCM-442L, RCM-442R, RCM-442S, RCM-442M, RCM-442N, RCM-442L, RCM-442S, RCM-442M, RCM-442N

When tested as specified, the submitted sample complies with the requirements of Commission Decision of 21 July 2011 amending Directive 2011/65/EU.
RoHS

The test report is issued by the Company subject to its General Conditions of Service printed on their website or drawn to the attention of the customer at the time of purchase and prior to the issue of this report. The results shown in this test report refer only to the samples tested unless otherwise stated. This Test Report cannot be reproduced, except in full, without prior written permission of the Company.

Shenzhen LCC Compliance Testing Laboratory Ltd.
17, Jingqun Industrial Park, Tingle Road, Bao'an Dist., Bao'an District, Shenzhen, Guangdong, China
Tel: 867573-8284732 Fax: 867573-8284732
Http://www.lcc-test.com Email: info@shenzhenlcc.com.cn
Manager April 16, 2013

CERTIFICATE OF CONFORMITY

CERTIFICATE of Conformity
Reference No.: LC0130420825

Applicant: Shenzhen Rishouo Technology Development Co., LTD.
Address: 2F No.43 West Longgang Road, Longhua New District, Shenzhen, China
Product: Camera
Models: RCM-IP2110, RCM-IP2110R, RCM-IP2110L, RCM-IP2110S, RCM-IP2110M, RCM-IP2110N, RCM-442, RCM-442L, RCM-442R, RCM-442S, RCM-442M, RCM-442N, RCM-442L, RCM-442S, RCM-442M, RCM-442N

When tested as specified, the submitted sample complies with the requirements of Commission Decision of 21 July 2011 amending Directive 2011/65/EU.
RoHS

The test report is issued by the Company subject to its General Conditions of Service printed on their website or drawn to the attention of the customer at the time of purchase and prior to the issue of this report. The results shown in this test report refer only to the samples tested unless otherwise stated. This Test Report cannot be reproduced, except in full, without prior written permission of the Company.

Shenzhen LCC Compliance Testing Laboratory Ltd.
17, Jingqun Industrial Park, Tingle Road, Bao'an Dist., Bao'an District, Shenzhen, Guangdong, China
Tel: 867573-8284732 Fax: 867573-8284732
Http://www.lcc-test.com Email: info@shenzhenlcc.com.cn
Manager April 16, 2013

Skype:rcmctvsales5