

车载 dvr gps 4ch 3g 4g mdvr 3g sim 车载设备

(rcm-mdr 7104 设备)

车载设备 3G 4G 车载 dvr 车载设备



功能特点 Features



特点

3G 4G 无线 wifi

1. h. 264 编码, 4CH real-time 720P 视频流, 2ch 音频 + 2CH sd 录像
2. 支持 dvr 本地存储, 支持 sd 卡存储, 支持 sd 卡录像, 支持 sd 卡回放
3. 8-36V 供电, 低功耗;
4. 支持 + sd 卡 (支持 2TB 2.5 英寸 128GB sd 卡) 存储;
5. 支持 gps/bd/g 定位; 支持语音对讲
6. 体积小, 重量轻, 易于携带

应用

3G 4G 无线 wifi

Richmor

 **Factory Audit**

SMS Device configure
OTA Remote Updating
AHD 720P/960P
2TB HDD+128GB SD Card

NEW



CE

FC



□□□□□ 3G 4G □□□□□ wifi □□□□□□□□

Richmor

Factory Audit

SMS Device configure
OTA Remote Updating
AHD 720P/960P
2TB HDD+128GB SD Card

NEW



CE FCC ROHS



支持 3G 4G 支持 wifi 支持

Front LED Indicators



支持 3G 4G 支持 wifi 支持

Back Panel IO Indicators



Richmor gui

The main menu includes: Search, System setup, Rec setup, Network setup, Alarm setup, Peripheral setup, System Tools, System Information, as below:

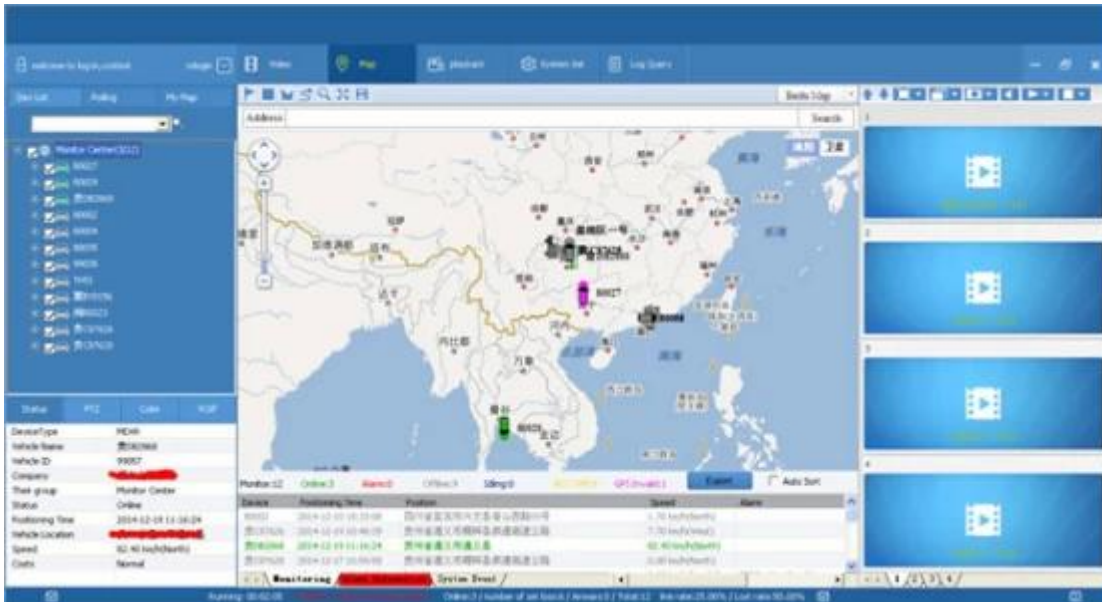


RCM-MDR7104

OS		Linux
OS		h. 264
OSD		OSD, OSD ID
GUI	GUI	GUI
Video	Video	4CH 720P /sd / 1.0Vp 75
	Video	2CH cvbs + vga, 1.0Vp-p, 75, 1CH, 4CH
	Video	1CH 4CH
	Video	720 p/d1/HD1/cif, MAX:4 720P 4 D1
	Video	0-7, 0
	Video	pal: 100, CCIR625 line, 50field; ntsc: 120, CCIR525 line, 60field; cif: 256Kbps ~ 1.5Mbps, 8; HD1: 600Kbps ~ 2.5Mbps, 8; D1: 800Kbps ~ 3Mbps, 8; 720P: 4 mbps-6 mbps,
	Video	"", ,
Audio	Audio	4CH
	Audio	2 ch, bnc
	Audio	g. 726, 8 kb/
IO		7CH Input, 1CH, ,
IO		2CH, /
IO		3CH RS232 pos/ led
		2CH 485, ptz
		2CH can
IO		3G, wcdma, CDMA2000, GPRS, ; 4G, tdd-lte, -lte
GPS		gps/bd
		2.5 2TB

sd	sd	128GB sd
	usb	usb, sd Updatin, ota
	h. 264	
	FAT32	
usb	usb	u,
	4CH	/ / /
		x 2, x4, x8, x16
		2
		led Panel Oil sensor POS Bus Broadcaster
&		. /
		DC:+6V-+ 36 v
		5 w
		-20°C70°C
		20%-80%
		200 (d) * 187 (w) * 62 (h) mm
		1.90

(CMSV6)



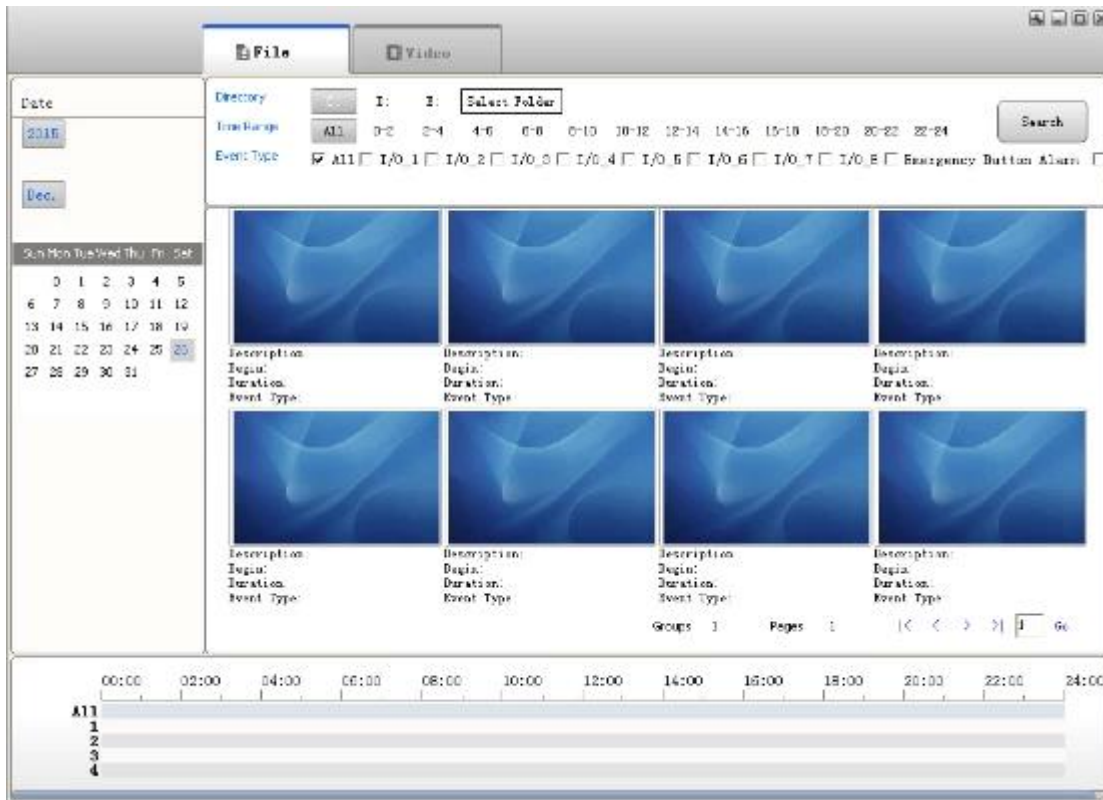
CMSV6

□□□□□□

□□□□□□□□--□□ **iphone**□**android**□**ipad** □□



□□□□□□



Richmor

Vehicle Management System National [WEBP](#) | [Manager](#) | [Exit](#)

Report **Device** **User**

Mileage Summary

Begin Time: 2016-01-08 00:00:00 To: 2016-01-08 16:27:09

Device: All Devices [Select Device](#) [Query](#) [Export To Excel](#) [Export To Csv](#) [Export To Pdf](#)

Index	Vehicle	Total Mileage (KM)	Begin Time	Start Mileage (KM)	Start Position	End Time	End Mileage (KM)
1	鄂E3314	174.88	2016-01-08 09:03:32	22.95	22 57426, 114.03844	2016-01-08 16:25:41	157.63
2	鄂E3330	202.87	2016-01-08 07:33:11	18.1	22 60426, 112.02032	2016-01-08 16:25:28	171.57
3	2402	217.42	2016-01-08 07:09:55	23.41	23 32682, 116.67327	2016-01-08 14:57:24	300.63
4	鄂A75248	97.4	2016-01-08 00:00:25	296.87	41 572468, 118.78824	2016-01-08 08:42:39	41.08
5	2403	0	2016-01-08 00:00:07	36.26	37 75878, 110.73117	2016-01-08 16:19:07	16.28
6	鄂N5397	418.36	2016-01-08 06:09:54	36.86	35 401432, 117.84370	2016-01-08 16:20:11	92.83
7	鄂J71112	129.98	2016-01-08 14:46:40	26.51	35 675478, 117.68394	2016-01-08 14:25:37	144.92
8	鄂N5250	45.81	2016-01-08 00:00:03	138.13	22 65426, 112.68530	2016-01-08 16:15:15	115.62
9	鄂N5353	43.81	2016-01-08 00:00:21	82	22 65426, 112.49788	2016-01-08 16:11:28	73.12
10	鄂N5368	111.72	2016-01-08 00:00:15	145.61	22 65426, 112.49788	2016-01-08 16:24:46	93.9
11	鄂N5310	52.02	2016-01-08 00:00:10	83.24	22 65426, 112.49788	2016-01-08 16:15:55	57.92
12	鄂A3883	655.08	2016-01-08 00:00:29	354.38	35 850443, 117.65370	2016-01-08 16:24:44	1089.74
13	24058	224.42	2016-01-08 07:00:58	44.57	37 44978, 118.94470	2016-01-08 16:17:34	80.4
14	28999	2.38	2016-01-08 13:13:09	17.6	38 734423, 121.23647	2016-01-08 13:57:27	18.61
15	01988	368.29	2016-01-08 00:00:54	51.94	31 733005, 115.86621	2016-01-08 16:03:58	420.33

Richmor

□□□□

□□

1□□, □□□□□□, □ av □□/□□ □□/□□□□□□

□□□□□□□□□□ Richmor □□, □□□□□□□□



Richmor Brand Package



Standard Package

□□

□ **dhl/ups** □□□□□, □□□□□□□□□□

□□□2-5 □□□□□□□□

b. □□□□□5-10 □□□□□□□□□□□□□□.

□□



MoneyGram

PayPal

HSBC



□□

1. Well □□□□□□□□□□□□, □□□□ supoprt

2. oem/odm □□



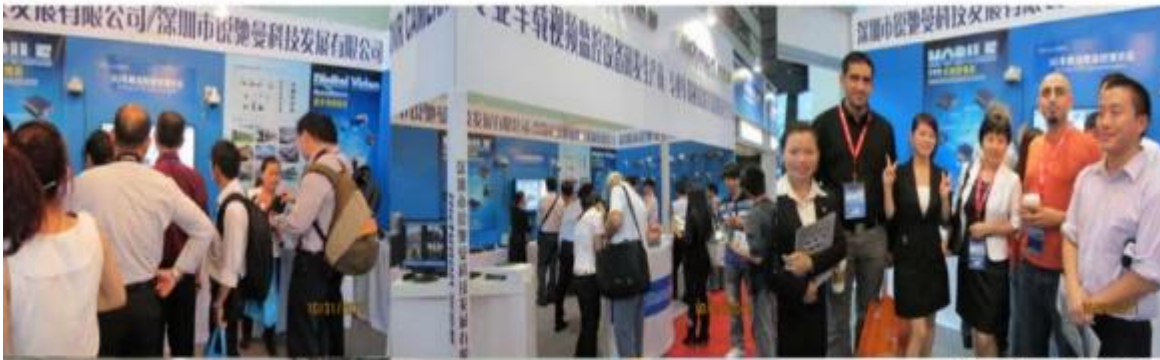
CUSTOMER SATISFACTION

- Excellent Aftersale service
- 12 months warranty
- 24 hours customer service
- We understand the importance of our customers

□□

Richmor

CPSE2012 in Shenzhen



CPSE2013

10.29-10.31

4 Booth we have

Welcome you !!!



CPSE2012-- Guangdong TV Report-Shenzhen Richmor



□□□□ & □□:



EXCELLENT SUPPORT



□□□□□□□□





□□□□□□□□

□□□□□□□□□□□□□□□□□□

□□□□□□□□□□□□, □□□□□□□□□□

□□□□: overseasales-7@rcmctv.com overseasales-7@rcmctv-rcmctvsales7