

SD + HDD 3G GPS DVR / / (RCM-MDR8000)

DVR :

1. Superhigh
2. ()
3. 6
4. /
- 5.
6. Antomatic ON / OFF
7. CE FCC
8. RJ45

DVR :



DVR 'S Paramter:

--	--

A & 4	4
1 & H.264	1 & H.264
D1 / HD1 / CIF	D1 / HD1 / CIF
100 (PAL) 120 fps (NTSC) 50FPS (4 * D1)	100 (PAL) 120 fps (NTSC) 50FPS (4 * D1)
SD & HDD	SD & HDD
1CH &	1CH &
12V	12V
1-4 RJ45	1-4 RJ45
RS232	RS232
GPS	GPS
G-SENSOR	G-SENSOR
(70V 6 & (48V ~:.	(70V 6 & (48V ~:.
2.4W	2.4W
20 50 90	20 50 90
193mm * 200MM * 53MM 1.5 & KG	193mm * 200MM * 53MM 1.5 & KG
SD & 3G &	SD & 3G &
EDGE CDMA 3G & EVDO WCDMA CDMA2000	EDGE CDMA 3G & EVDO WCDMA CDMA2000



AV Input Cables



AV Output Cable



Power Cable



IO Cables



3G Antenna



GPS Antenna

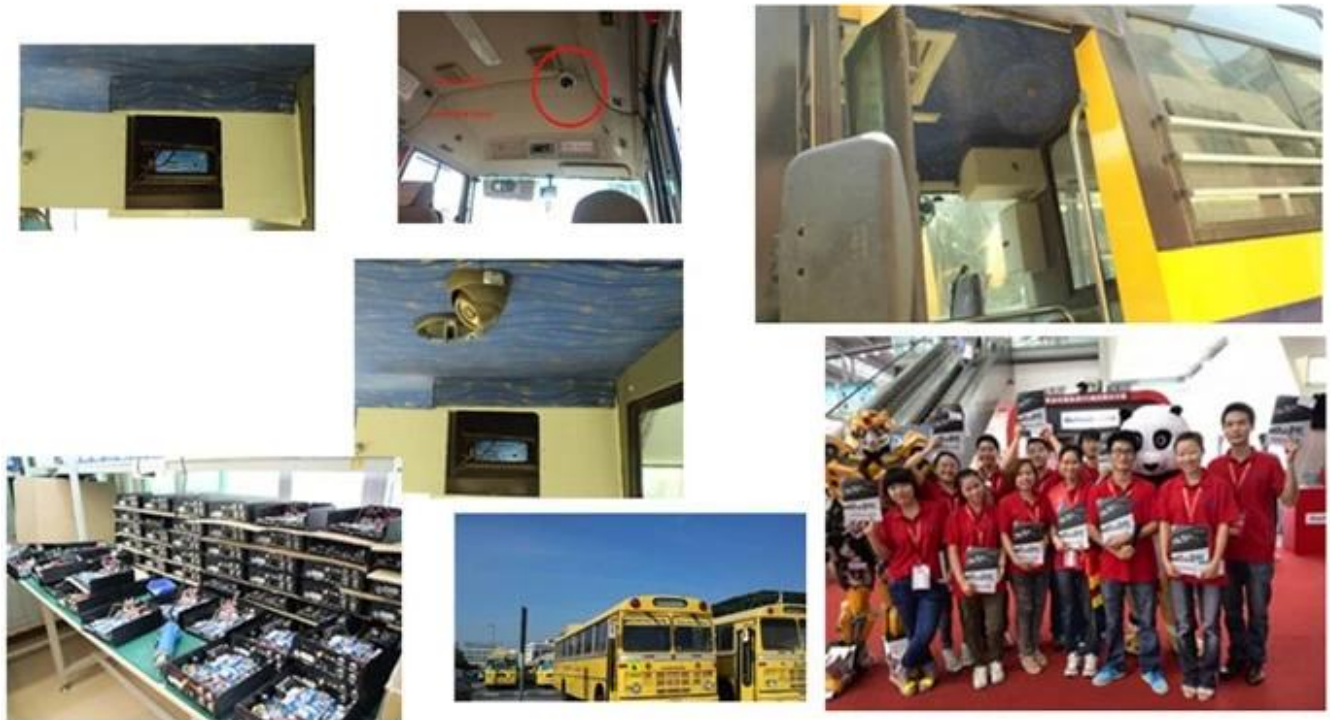


Remote Control



CD (Manual & Software inside)

□□□□□□ □□ □□□□□□:



HDD DVR □□□□ □□□□□□:

VERIFICATION OF CONFORMITY

Verification of Conformity
Reference No.: L23128432879

Responsible Party : Shenzhen Richmor Technology Development Co., LTD.
Address : #F No.43 West Longgang Road, Longgang New District, Shenzhen, China
Product : Camera
Model No. : RCM-IP2704, RCM-IP2704L, RCM-LP2704, RCM-IP2704S, RCM-IP2704T, RCM-IP2704B, RCM-360, RCM-360L, RCM-360S, RCM-360T, RCM-360B, RCM-360L, RCM-360S, RCM-360T, RCM-360B, RCM-360L, RCM-360S, RCM-360T, RCM-360B
Trade Mark : Richmor
Standards : FCC CFR 47 PART 15 Subpart B, 2011, ANSI C63A-2008

Requirement under:
This device is in conformity with Part 15 of the FCC Rules and Regulations for radio frequency devices. Operation of this product is subject to the following two conditions:
(1) This device may not cause harmful interference, and (2) this device must accept any interference received, including interference that originates from authorized radio services.
This device is subject to the applicable FCC Rules and Regulations. The method of testing used in accordance with the final accurate measurement standards procedure, and that all necessary steps have been confirmed to detect that all production units of the same equipment will continue to comply with the Federal Communications Commission's requirements.

Shenzhen L231 Compliance Testing Laboratory Ltd.
#F, Longgang Industrial Park, Longgang Road, Longgang New District, Shenzhen, Guangdong, China
Tel: 86(755) 42291122 Fax: 86(755) 42291122
http://www.l231.com.cn Email: admin@l231.com.cn

Manager
April 13, 2015

VERIFICATION OF CONFORMITY

Verification of Conformity
Reference No.: L23128432879

Responsible Party : Shenzhen Richmor Technology Development Co., LTD.
Address : #F No.43 West Longgang Road, Longgang New District, Shenzhen, China
Product : Media DVR
Model No. : RCM-MD704, RCM-MD704L, RCM-MD704S, RCM-MD704T, RCM-MD704B, RCM-MD704L, RCM-MD704S, RCM-MD704T, RCM-MD704B
Trade Mark : Richmor
Standards : FCC CFR 47 PART 15 Subpart B, 2011, ANSI C63A-2008

Requirement under:
This device is in conformity with Part 15 of the FCC Rules and Regulations for radio frequency devices. Operation of this product is subject to the following two conditions:
(1) This device may not cause harmful interference, and (2) this device must accept any interference received, including interference that originates from authorized radio services.
This device is subject to the applicable FCC Rules and Regulations. The method of testing used in accordance with the final accurate measurement standards procedure, and that all necessary steps have been confirmed to detect that all production units of the same equipment will continue to comply with the Federal Communications Commission's requirements.

Shenzhen L231 Compliance Testing Laboratory Ltd.
#F, Longgang Industrial Park, Longgang Road, Longgang New District, Shenzhen, Guangdong, China
Tel: 86(755) 42291122 Fax: 86(755) 42291122
http://www.l231.com.cn Email: admin@l231.com.cn

Manager
April 13, 2015

CERTIFICATE OF CONFORMITY

Certificate of Conformity
Reference No.: L23128432879

Applicant : Shenzhen Richmor Technology Development Co., LTD.
Address : #F No.43 West Longgang Road, Longgang New District, Shenzhen, China
Product : Media DVR
Model No. : RCM-MD704, RCM-MD704L, RCM-MD704S, RCM-MD704T, RCM-MD704B, RCM-MD704L, RCM-MD704S, RCM-MD704T, RCM-MD704B
Trade Mark : Richmor

The applicant products have been tested to be with the latest standards and found to conform with the following European Directives:
The EMC Directive 2014/53/EU
EN 55022: 2010, EN 55024: 2010

The tests were performed in normal operation mode. The test results apply only to the particular sample tested and to the specific tests carried out. This certificate declares conformity to the sample investigated to our test reference number only.

The CE markings on these labels can be affixed to the product after preparation of necessary technical documentation.

Other relevant Directives have to be obtained.

CE

Shenzhen L231 Compliance Testing Laboratory Ltd.
#F, Longgang Industrial Park, Longgang Road, Longgang New District, Shenzhen, Guangdong, China
Tel: 86(755) 42291122 Fax: 86(755) 42291122
http://www.l231.com.cn Email: admin@l231.com.cn

Manager
April 13, 2015

CERTIFICATE OF CONFORMITY

Certificate of Conformity
Reference No.: L23128432879

Applicant : Shenzhen Richmor Technology Development Co., LTD.
Address : #F No.43 West Longgang Road, Longgang New District, Shenzhen, China
Product : Camera
Model No. : RCM-IP2704, RCM-IP2704L, RCM-LP2704, RCM-IP2704S, RCM-IP2704T, RCM-IP2704B, RCM-360, RCM-360L, RCM-360S, RCM-360T, RCM-360B, RCM-360L, RCM-360S, RCM-360T, RCM-360B
Trade Mark : Richmor

The applicant products have been tested to be with the latest standards and found to conform with the following European Directives:
The EMC Directive 2014/53/EU
EN 55022: 2010, EN 55024: 2010

The tests were performed in normal operation mode. The test results apply only to the particular sample tested and to the specific tests carried out. This certificate declares conformity to the sample investigated to our test reference number only.

The CE markings on these labels can be affixed to the product after preparation of necessary technical documentation.

Other relevant Directives have to be obtained.

CE

Shenzhen L231 Compliance Testing Laboratory Ltd.
#F, Longgang Industrial Park, Longgang Road, Longgang New District, Shenzhen, Guangdong, China
Tel: 86(755) 42291122 Fax: 86(755) 42291122
http://www.l231.com.cn Email: admin@l231.com.cn

Manager
April 13, 2015

CERTIFICATE OF CONFORMITY

Certificate of Conformity
Reference No.: L23128432879

Applicant : Shenzhen Richmor Technology Development Co., LTD.
Address : #F No.43 West Longgang Road, Longgang New District, Shenzhen, China
Trade Mark : Richmor
Product : Camera
Model No. : RCM-IP2704, RCM-IP2704L, RCM-LP2704, RCM-IP2704S, RCM-IP2704T, RCM-IP2704B, RCM-360, RCM-360L, RCM-360S, RCM-360T, RCM-360B, RCM-360L, RCM-360S, RCM-360T, RCM-360B

The test report is issued by the Company subject to its General Conditions of Service printed on these terms. Attention is drawn to the limitations of liability, indemnification and jurisdiction clause on these terms. This report shall only be used for the samples tested unless otherwise stated. This Test Report cannot be reproduced, stored in full, without prior written permission of the Company.

Other relevant Directives have to be obtained.

RoHS

Shenzhen L231 Compliance Testing Laboratory Ltd.
#F, Longgang Industrial Park, Longgang Road, Longgang New District, Shenzhen, Guangdong, China
Tel: 86(755) 42291122 Fax: 86(755) 42291122
http://www.l231.com.cn Email: admin@l231.com.cn

Manager
April 13, 2015

CERTIFICATE OF CONFORMITY

Certificate of Conformity
Reference No.: L23128432879

Applicant : Shenzhen Richmor Technology Development Co., LTD.
Address : #F No.43 West Longgang Road, Longgang New District, Shenzhen, China
Trade Mark : Richmor
Product : Media DVR
Model No. : RCM-MD704, RCM-MD704L, RCM-MD704S, RCM-MD704T, RCM-MD704B, RCM-MD704L, RCM-MD704S, RCM-MD704T, RCM-MD704B

The test report is issued by the Company subject to its General Conditions of Service printed on these terms. Attention is drawn to the limitations of liability, indemnification and jurisdiction clause on these terms. This report shall only be used for the samples tested unless otherwise stated. This Test Report cannot be reproduced, stored in full, without prior written permission of the Company.

Other relevant Directives have to be obtained.

RoHS

Shenzhen L231 Compliance Testing Laboratory Ltd.
#F, Longgang Industrial Park, Longgang Road, Longgang New District, Shenzhen, Guangdong, China
Tel: 86(755) 42291122 Fax: 86(755) 42291122
http://www.l231.com.cn Email: admin@l231.com.cn

Manager
April 13, 2015

Richmor 摄像头 摄像头: [DVR 摄像头 摄像头 摄像头](#)
DVR 摄像头 摄像头 摄像头:



Richmor

OEM & ODM Service

Brasil World Cup Supplier