

RCM-SP5800 專業級 手持式 攝影機 產品 說明書

型號: **RCM-SP5800**

主要特點:

1. DVR 內置 攝影機 鏡頭
2. 3 英寸 液晶 顯示器 GPS 定位
3. 高清晰度 攝影機 鏡頭
4. 內置 SD 卡 插槽 可擴展 存儲
5. 內置 電池 可充電 電池 充電 SD
6. recovery 功能 可恢復 數據 刪除

外觀:

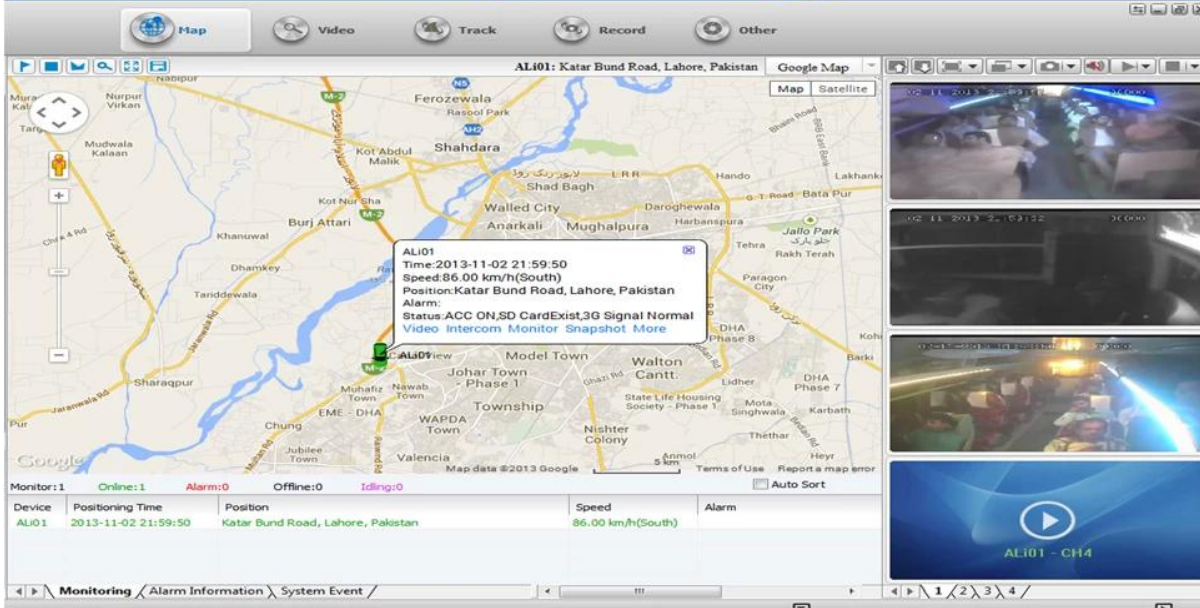




主要性能指标:

项目	规格	说明
基本配置	操作系统	Android
	处理器	高通骁龙 S550 处理器 : 1.5GHz 主频, 1.5GHz 协处理器 : 高通骁龙 S550 处理器 & 高通骁龙 S550 协处理器 高通骁龙 S550 & GPS / 3 轴陀螺仪 高通骁龙G 高通骁龙 高通骁龙
	内存	高通骁龙 S550 处理器 高通骁龙 S550 协处理器
	摄像头	前置 摄像头 高通骁龙 S550 协处理器
性能指标	分辨率	70 : 高通骁龙 S550 协处理器 高通骁龙 S550 协处理器 高通骁龙 S550 协处理器 高通骁龙 S550 协处理器 CMOS
	OSD	高通骁龙 S550 协处理器 高通骁龙 S550 协处理器 高通骁龙 S550 协处理器 GPS 高通骁龙 S550 协处理器
	视频	H.264. HISILICON 高通骁龙 S550 协处理器 高通骁龙 S550 协处理器.
	图像分辨率	高通骁龙 S550 协处理器 VGA QVGA 高通骁龙 S550 协处理器
	图像分辨率 高通骁龙 S550 协处理器 QVGA	QVGA: 400Kbps ~ 1.5 高通骁龙 S550 协处理器 MBps 4 高通骁龙 S550 协处理器 高通骁龙 S550 协处理器 高通骁龙 S550 协处理器
	图像分辨率 高通骁龙 S550 协处理器 VGA	VGA: 1000kbps ~ 2Mbps 4 高通骁龙 S550 协处理器 高通骁龙 S550 协处理器 高通骁龙 S550 协处理器
	图像分辨率 高通骁龙 S550 协处理器	高通骁龙 S550 协处理器 高通骁龙 S550 协处理器 高通骁龙 S550 协处理器 高通骁龙 S550 协处理器
图像分辨率 高通骁龙 S550 协处理器	高通骁龙 S550 协处理器	

**Vehicle with device for test in AC Coach
Lahore to Sadiq Abad near motorway @ 86Km/h**

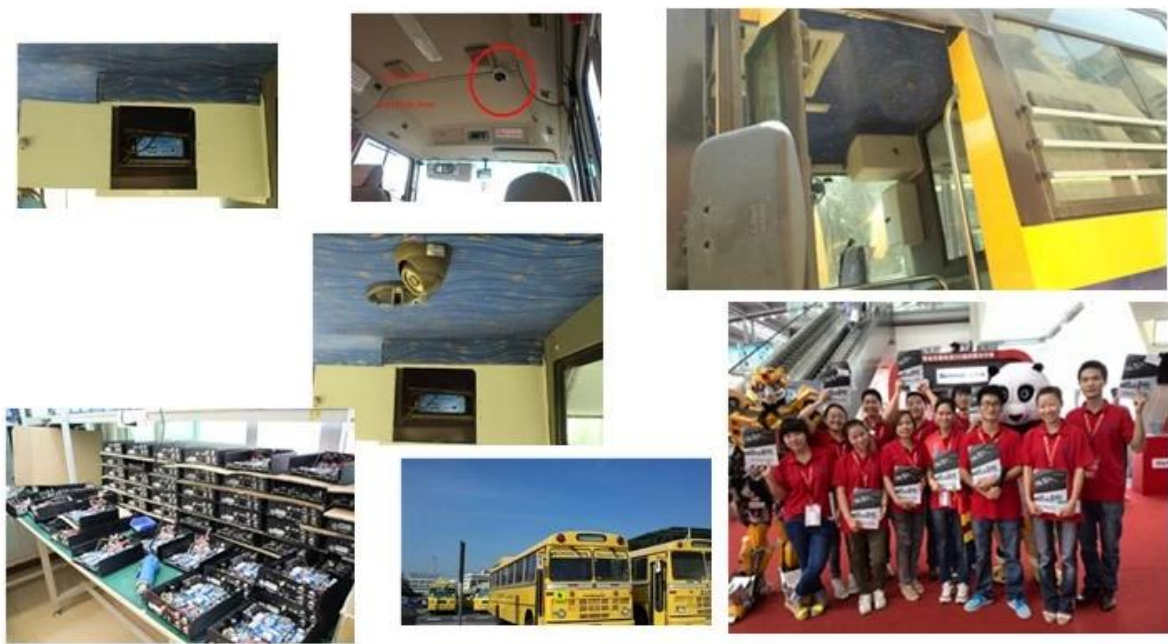
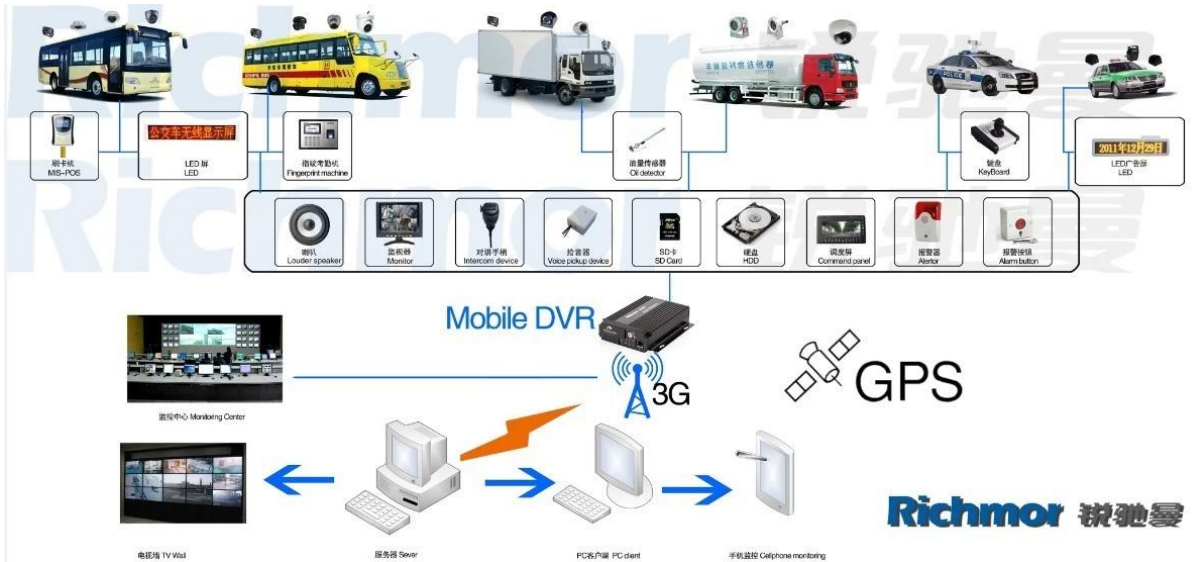


□□□□□□ □□□□ □□□□□□ □□□□□□ □□□□□□ □□□□ □

□ IOS & □□□□□□ □□□□□□ □□□□□□ □□□□□□ OS



□□□□□□ **DVR** □□□□□□□□ □□□□□□



□□□□:

VERIFICATION OF CONFORMITY

Verification of Conformity
Reference No.: LC0134000970

Responsible Party: Shenzhen Reaktor Technology Development Co., LTD.
Address: 27 No.48 West Longgang Road, Longhua New District, Shenzhen, China
Product: Camera
Models: RCM-PC20A, RCM-PC20L, RCM-LP20A, RCM-LP20L, RCM-AP20A, RCM-AP20L, RCM-300, RCM-300L, RCM-400, RCM-400L, RCM-500, RCM-500L, RCM-600, RCM-600L, RCM-800, RCM-800L, RCM-1000, RCM-1000L
Trade Mark: Reaktor
Standards: FCC CFR 47 PART 15 Subpart B, 2011, ANSI C63.4-2008

Important note:
This device is in compliance with Part 15 of the FCC Rules and Regulations for radio frequency devices. Operation of the product is subject to the following two conditions:
(1) This device may not cause harmful interference, and (2) this device must accept any interference received, including interference that may cause undesired operation.
The EMC Directive 2004/108/EC
EN 55032, EN 55035, EN 55034-2010
This test was performed in normal operation mode. The test results apply only to the particular sample tested and to the specific test setup used. This certificate applies specifically to the sample investigated in our test reference number only.
The CE marking is shown below and is affixed to the product after preparation of necessary technical documentation.
Clear marked devices have to be obtained.

Shenzhen LCC Compliance Testing Laboratory Ltd.
17, Jingqian Industrial Park, Tengda Road, Bao'an Dist., Shenzhen District, Guangdong, China
Tel: 86(755) 82911122 Fax: 86(755) 82911122
http://www.lcc-test.com Email: admin@lcc-test.com

Manager
April 16, 2013

VERIFICATION OF CONFORMITY

Verification of Conformity
Reference No.: LC0134000970

Responsible Party: Shenzhen Reaktor Technology Development Co., LTD.
Address: 27 No.48 West Longgang Road, Longhua New District, Shenzhen, China
Product: Media DVR
Models: RCM-M200A, RCM-M200L, RCM-M300A, RCM-M300L, RCM-M400A, RCM-M400L, RCM-M500A, RCM-M500L
Trade Mark: Reaktor
Standards: FCC CFR 47 PART 15 Subpart B, 2011, ANSI C63.4-2008

Important note:
This device is in compliance with Part 15 of the FCC Rules and Regulations for radio frequency devices. Operation of the product is subject to the following two conditions:
(1) This device may not cause harmful interference, and (2) this device must accept any interference received, including interference that may cause undesired operation.
The EMC Directive 2004/108/EC
EN 55032, EN 55035, EN 55034-2010
This test was performed in normal operation mode. The test results apply only to the particular sample tested and to the specific test setup used. This certificate applies specifically to the sample investigated in our test reference number only.
The CE marking is shown below and is affixed to the product after preparation of necessary technical documentation.
Clear marked devices have to be obtained.

Shenzhen LCC Compliance Testing Laboratory Ltd.
17, Jingqian Industrial Park, Tengda Road, Bao'an Dist., Shenzhen District, Guangdong, China
Tel: 86(755) 82911122 Fax: 86(755) 82911122
http://www.lcc-test.com Email: admin@lcc-test.com

Manager
April 16, 2013

CERTIFICATE OF CONFORMITY
Reference No.: LC0134000970

Applicant: Shenzhen Reaktor Technology Development Co., LTD.
Address: 27 No.48 West Longgang Road, Longhua New District, Shenzhen, China
Product: Media DVR
Models: RCM-M200A, RCM-M200L, RCM-M300A, RCM-M300L, RCM-M400A, RCM-M400L, RCM-M500A, RCM-M500L
Trade Mark: Reaktor

The submitted products have been tested in accordance with the test standards and found in compliance with the following European Directives:
The EMC Directive 2004/108/EC
EN 55032, EN 55035, EN 55034-2010
This test was performed in normal operation mode. The test results apply only to the particular sample tested and to the specific test setup used. This certificate applies specifically to the sample investigated in our test reference number only.
The CE marking is shown below and is affixed to the product after preparation of necessary technical documentation.
Clear marked devices have to be obtained.

Shenzhen LCC Compliance Testing Laboratory Ltd.
17, Jingqian Industrial Park, Tengda Road, Bao'an Dist., Shenzhen District, Guangdong, China
Tel: 86(755) 82911122 Fax: 86(755) 82911122
http://www.lcc-test.com Email: admin@lcc-test.com

Manager
April 16, 2013

CERTIFICATE OF CONFORMITY

CERTIFICATE of Conformity
Reference No.: LC0134000970

Applicant: Shenzhen Reaktor Technology Development Co., LTD.
Address: 27 No.48 West Longgang Road, Longhua New District, Shenzhen, China
Product: Camera
Models: RCM-PC20A, RCM-PC20L, RCM-LP20A, RCM-LP20L, RCM-AP20A, RCM-AP20L, RCM-300, RCM-300L, RCM-400, RCM-400L, RCM-500, RCM-500L, RCM-600, RCM-600L, RCM-800, RCM-800L, RCM-1000, RCM-1000L
Trade Mark: Reaktor

The submitted products have been tested in accordance with the test standards and found in compliance with the following European Directives:
The EMC Directive 2004/108/EC
EN 55032, EN 55035, EN 55034-2010
This test was performed in normal operation mode. The test results apply only to the particular sample tested and to the specific test setup used. This certificate applies specifically to the sample investigated in our test reference number only.
The CE marking is shown below and is affixed to the product after preparation of necessary technical documentation.
Clear marked devices have to be obtained.

Shenzhen LCC Compliance Testing Laboratory Ltd.
17, Jingqian Industrial Park, Tengda Road, Bao'an Dist., Shenzhen District, Guangdong, China
Tel: 86(755) 82911122 Fax: 86(755) 82911122
http://www.lcc-test.com Email: admin@lcc-test.com

Manager
April 16, 2013

CERTIFICATE OF CONFORMITY

CERTIFICATE of Conformity
Reference No.: LC0134000970

Applicant: Shenzhen Reaktor Technology Development Co., LTD.
Address: 27 No.48 West Longgang Road, Longhua New District, Shenzhen, China
Trade Mark: Reaktor
Product: Camera
Models: RCM-PC20A, RCM-PC20L, RCM-LP20A, RCM-LP20L, RCM-AP20A, RCM-AP20L, RCM-300, RCM-300L, RCM-400, RCM-400L, RCM-500, RCM-500L, RCM-600, RCM-600L, RCM-800, RCM-800L, RCM-1000, RCM-1000L

The test results is issued by the Company subject to the General Conditions of Service printed on the back of this report. The results shown in this test report refer only to the particular tested sample unless otherwise stated. This Test Report cannot be reproduced in any form without prior written permission of the Company.
Clear marked devices have to be obtained.

Shenzhen LCC Compliance Testing Laboratory Ltd.
17, Jingqian Industrial Park, Tengda Road, Bao'an Dist., Shenzhen District, Guangdong, China
Tel: 86(755) 82911122 Fax: 86(755) 82911122
http://www.lcc-test.com Email: admin@lcc-test.com

Manager
April 16, 2013

CERTIFICATE OF CONFORMITY

CERTIFICATE of Conformity
Reference No.: LC0134000970

Applicant: Shenzhen Reaktor Technology Development Co., LTD.
Address: 27 No.48 West Longgang Road, Longhua New District, Shenzhen, China
Trade Mark: Reaktor
Product: Media DVR
Models: RCM-M200A, RCM-M200L, RCM-M300A, RCM-M300L, RCM-M400A, RCM-M400L, RCM-M500A, RCM-M500L

The test report is issued by the Company subject to the General Conditions of Service printed on the back of this report. The results shown in this test report refer only to the particular tested sample unless otherwise stated. This Test Report cannot be reproduced in any form without prior written permission of the Company.
Clear marked devices have to be obtained.

Shenzhen LCC Compliance Testing Laboratory Ltd.
17, Jingqian Industrial Park, Tengda Road, Bao'an Dist., Shenzhen District, Guangdong, China
Tel: 86(755) 82911122 Fax: 86(755) 82911122
http://www.lcc-test.com Email: admin@lcc-test.com

Manager
April 16, 2013

□□□□ □□ □□□□□□□□:



SD Mobile DVR with 3G GPS



SD Mobile DVR with WIFI 3G GPS G-Sensor

□□□□□□ □□□□:

□□□□ □□□□: T / T□ □□ □□ □□□□ □□□□ □□□□□□ □□□□□□

□□□□ □□□□ □□ □□□□ 5 □□□□ □□□□ :□□□□□□ □□□□□□ □□ □□□□□□□□.

□□□□ 12 :□□□□□□□□

□□□□□□ □□□□□□: DHL □ UPS □ □□□ □□ □□ □□ □□ □□□□□□□□ □□□□□□□□ □□□□ □□□□□□□□

□□□□□□□□ □□□□□□□□ □□□□:



Richmor Brand Package

Standard Package

:□□□□□□ □□□□ □□ □□ □□□□□□

□□□□□□□□□□ □□□□□□ □□□□□□ □□□□ □□□□ □□□□□□□□ □□□□□□ □□□□ □□□□ .1.

2. □□□□□□□□ □□□□□□ □□□□□□ □□□□ □□□□ □□□□□□□□ □□ □□□□ DVR □□□□□□.

3. □□□□□□□□ □□□□ □□□□ □□□□

□□□□ □□□□ □□□□ □□ □□□□ □□□□ □□ □□□□ □□□□ □□□□ □□□□ □□□□□□ .4 □□□□□□.

□□□□□□□□ □□□□□□ □□□□□□ □□□□□□ □□□□□□ .5 □□□□□□.

□□□□ □□□□□□ □□□□ □□ □□ □□□□□□ □□ □□□□□□ □□□□□□ □□ □□□□ / □□□□□□□□ □□□□□□ □□□□□□ :□□□□□□ □□□□□□ □□□□□□□□.

□□□□ □□□□:



Richmor

OEM & ODM Service

Brasil World Cup Supplier



Inner Training after study from Alibaba in July



Technical Training For Fast Response to Customer Richmor 锐驰曼



lecturer for Execution