

Richmot D1 H.264 DVR (RCM-MDR500)

Richmot DVR:

1. SD Card Mobile DVR, SD Card Locked for protecting the video for analyze the complete the recording.
2. GPRS / 3G / 4G & Richmot GPS
3. Support alarming, PTZ control, LED advertisement, broadcast, Text scheduling, talk back (driver to the head office)
4. RJ45 port: & Richmot
5. Support
6. Function





SD Mobile DVR 規格表:

型號	SD-MD01
A & 錄影 V & 錄影 錄影	4 錄影 錄影 錄影 錄影 錄影 錄影
A & 錄影 V & 錄影 錄影	1 & 錄影 錄影 錄影 錄影 錄影 錄影
錄影 錄影 錄影 錄影 錄影	H.264
錄影	D1 / HD1 / CIF 錄影 錄影
錄影 錄影 錄影	PAL 錄影 & 錄影 & 錄影 NTSC & 錄影 錄影
錄影	錄影 錄影 錄影 錄影 錄影 錄影 錄影 錄影 錄影 錄影 錄影
錄影	SD 64 錄影 錄影 錄影 錄影 錄影 錄影GB
錄影	1CH 錄影 錄影 錄影 錄影 錄影 & nbsp 錄影 錄影 錄影 錄影 錄影 錄影 錄影 錄影 錄影
錄影 錄影 錄影	錄影 錄影 錄影 錄影 錄影 錄影 錄影 錄影 錄影 錄影 錄影 錄影
錄影 錄影 錄影	3 / 錄影 錄影 錄影 錄影G
錄影 錄影 錄影	錄影 錄影 錄影 錄影 錄影 錄影 錄影 錄影 錄影 錄影 錄影 錄影 錄影 錄影 錄影
GPS	錄影 錄影 錄影 錄影 GPS
錄影	6 錄影 & 錄影 錄影V ~ 48V 70 錄影 錄影 錄影V: 錄影 錄影 錄影 錄影 錄影
錄影	2.4W
錄影	錄影 錄影 錄影 錄影 錄影 錄影 錄影
錄影 錄影 錄影	20 錄影 : 錄影 錄影 錄影 錄影C °70 錄影 °
錄影	180MM * 145MM * 45MM 錄影 & 錄影 錄影 & 錄影 1 錄影 & 錄影KG



AV Input Cables



AV Output Cable



Power Cable



IO Cables



3G Antenna



GPS Antenna

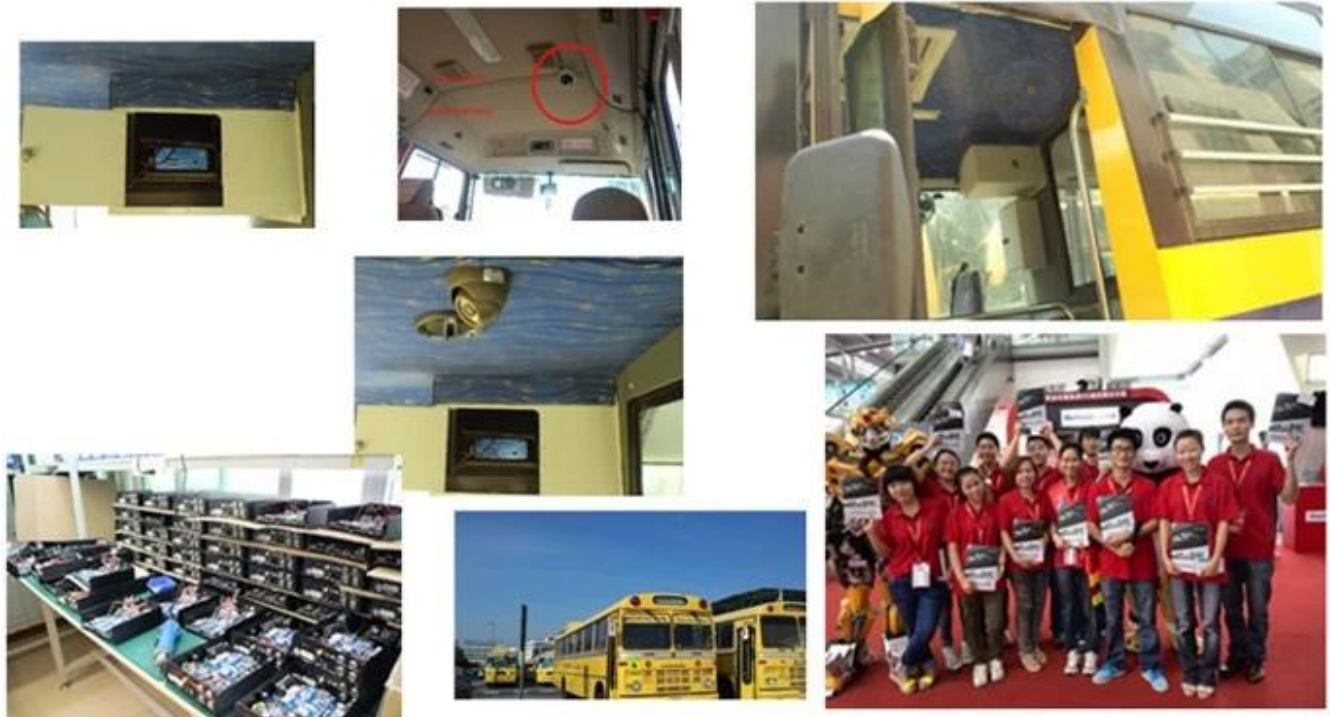


Remote Control



CD ( Manual & Software inside )

□□□□□ □□ □□□□□:



DVR :□□□□ □'□□□□□□

**VERIFICATION OF CONFORMITY**

**Verification of Conformity**  
Reference No.: L3115M1000212

Responsible Party: Shenzhen Reticon Technology Development Co., LTD.  
Address: JF No.41 West Longgang Road, Longgang New District, Shenzhen, China.  
Product: Camera  
Model No.: RCM-IP2724, RCM-IP2734, RCM-IP2744, RCM-IP2754, RCM-IP2764, RCM-IP2774, RCM-IP2784, RCM-IP2794, RCM-IP2804, RCM-IP2814, RCM-IP2824, RCM-IP2834, RCM-IP2844, RCM-IP2854, RCM-IP2864, RCM-IP2874, RCM-IP2884, RCM-IP2894  
Trade Mark: Reticon  
Standards: FCC CFR 47 PART 15 Subpart B, 2011, ANSI CANA 2008

Request under:  
This device is in conformance with Part 15 of the FCC Rules and Regulations for radio frequency devices. Operation of the product is subject to the following two conditions:  
(1) This device may not cause harmful interference, and (2) this device must accept any interference received, including interference that originates from other authorized users.  
This device is certified to the applicable FCC Rules and Regulations. The method of testing used is in accordance with the test procedures and methods specified, and that all necessary steps have been confirmed to ensure that all production units of the same equipment will continue to comply with the Federal Communications Commission's requirements.

Shenzhen L311 Compliance Testing Laboratory Ltd.  
1111 Xixiang Industrial Park, Yantia Park, Xixiang Blvd., Bao'an District, Shenzhen, Guangdong, China.  
Tel: 86(755) 83291122 Fax: 86(755) 83291123  
Www.l311.com.cn Email: admin@l311.com.cn

Manager  
April 10, 2013

**VERIFICATION OF CONFORMITY**

**Verification of Conformity**  
Reference No.: L3115M1000217

Responsible Party: Shenzhen Reticon Technology Development Co., LTD.  
Address: JF No.41 West Longgang Road, Longgang New District, Shenzhen, China.  
Product: Module DVR  
Model No.: RCM-M2724, RCM-M2734, RCM-M2744, RCM-M2754, RCM-M2764, RCM-M2774, RCM-M2784, RCM-M2794, RCM-M2804, RCM-M2814, RCM-M2824, RCM-M2834, RCM-M2844, RCM-M2854, RCM-M2864, RCM-M2874, RCM-M2884, RCM-M2894  
Trade Mark: Reticon  
Standards: FCC CFR 47 PART 15 Subpart B, 2011, ANSI CANA 2008

Request under:  
This device is in conformance with Part 15 of the FCC Rules and Regulations for radio frequency devices. Operation of the product is subject to the following two conditions:  
(1) This device may not cause harmful interference, and (2) this device must accept any interference received, including interference that originates from other authorized users.  
This device is certified to the applicable FCC Rules and Regulations. The method of testing used is in accordance with the test procedures and methods specified, and that all necessary steps have been confirmed to ensure that all production units of the same equipment will continue to comply with the Federal Communications Commission's requirements.

Shenzhen L311 Compliance Testing Laboratory Ltd.  
1111 Xixiang Industrial Park, Yantia Park, Xixiang Blvd., Bao'an District, Shenzhen, Guangdong, China.  
Tel: 86(755) 83291122 Fax: 86(755) 83291123  
Www.l311.com.cn Email: admin@l311.com.cn

Manager  
April 10, 2013

**CERTIFICATE OF CONFORMITY**

Reference No.: L3115M1000215

Applicant: Shenzhen Reticon Technology Development Co., LTD.  
Address: JF No.41 West Longgang Road, Longgang New District, Shenzhen, China.  
Product: Module DVR  
Model No.: RCM-M2724, RCM-M2734, RCM-M2744, RCM-M2754, RCM-M2764, RCM-M2774, RCM-M2784, RCM-M2794, RCM-M2804, RCM-M2814, RCM-M2824, RCM-M2834, RCM-M2844, RCM-M2854, RCM-M2864, RCM-M2874, RCM-M2884, RCM-M2894  
Trade Mark: Reticon

The certified products have been tested by us with the latest standards and found to conform with the following European Directive:  
The EMC Directive 2004/108/EC  
EM 90022: 2010, EN 55024: 2010

The tests were performed in normal operation mode. The test results apply only to the particular sample tested and in the specific test setup only. This certificate attests conformity in the sample investigated in our test reference number only.  
This CE marking is shown below and is affixed to the product after preparation of necessary technical documentation.  
Other relevant Directives have to be observed.

Shenzhen L311 Compliance Testing Laboratory Ltd.  
1111 Xixiang Industrial Park, Yantia Park, Xixiang Blvd., Bao'an District, Shenzhen, Guangdong, China.  
Tel: 86(755) 83291122 Fax: 86(755) 83291123  
Www.l311.com.cn Email: admin@l311.com.cn

Manager  
April 10, 2013

**CERTIFICATE OF CONFORMITY**

**CERTIFICATE of Conformity**  
Reference No.: L3115M1000219

Applicant: Shenzhen Reticon Technology Development Co., LTD.  
Address: JF No.41 West Longgang Road, Longgang New District, Shenzhen, China.  
Product: Camera  
Model No.: RCM-IP2724, RCM-IP2734, RCM-IP2744, RCM-IP2754, RCM-IP2764, RCM-IP2774, RCM-IP2784, RCM-IP2794, RCM-IP2804, RCM-IP2814, RCM-IP2824, RCM-IP2834, RCM-IP2844, RCM-IP2854, RCM-IP2864, RCM-IP2874, RCM-IP2884, RCM-IP2894  
Trade Mark: Reticon

The certified products have been tested by us with the latest standards and found to conform with the following European Directive:  
The EMC Directive 2004/108/EC  
EM 90022: 2010, EN 55024: 2010

The tests were performed in normal operation mode. The test results apply only to the particular sample tested and in the specific test setup only. This certificate attests conformity in the sample investigated in our test reference number only.  
This CE marking is shown below and is affixed to the product after preparation of necessary technical documentation.  
Other relevant Directives have to be observed.

Shenzhen L311 Compliance Testing Laboratory Ltd.  
1111 Xixiang Industrial Park, Yantia Park, Xixiang Blvd., Bao'an District, Shenzhen, Guangdong, China.  
Tel: 86(755) 83291122 Fax: 86(755) 83291123  
Www.l311.com.cn Email: admin@l311.com.cn

Manager  
April 10, 2013

**CERTIFICATE OF CONFORMITY**

**CERTIFICATE of Conformity**  
Reference No.: L3115M1000216

When tested as specified, the certified sample complies with the requirements of Commission Decision of 27 July 2011 amending Directive 2011/65/EU.

Applicant: Shenzhen Reticon Technology Development Co., LTD.  
Address: JF No.41 West Longgang Road, Longgang New District, Shenzhen, China.  
Trade Mark: Reticon  
Product: Camera  
Model No.: RCM-IP2724, RCM-IP2734, RCM-IP2744, RCM-IP2754, RCM-IP2764, RCM-IP2774, RCM-IP2784, RCM-IP2794, RCM-IP2804, RCM-IP2814, RCM-IP2824, RCM-IP2834, RCM-IP2844, RCM-IP2854, RCM-IP2864, RCM-IP2874, RCM-IP2884, RCM-IP2894

The test report is issued by the Company subject to its General Conditions of Service printed within Report. Attention is drawn to the limitations of liability, indemnification and jurisdiction clause within Report. This report is in the test report also only in the sample tested unless otherwise stated. This Test Report cannot be reproduced, issued in full, without prior written permission of the Company.  
Other relevant directives have to be observed.

Shenzhen L311 Compliance Testing Laboratory Ltd.  
1111 Xixiang Industrial Park, Yantia Park, Xixiang Blvd., Bao'an District, Shenzhen, Guangdong, China.  
Tel: 86(755) 83291122 Fax: 86(755) 83291123  
Www.l311.com.cn Email: admin@l311.com.cn

Manager  
April 10, 2013

**CERTIFICATE OF CONFORMITY**

**CERTIFICATE of Conformity**  
Reference No.: L3115M1000218

When tested as specified, the certified sample complies with the requirements of Commission Decision of 27 July 2011 amending Directive 2011/65/EU.

Applicant: Shenzhen Reticon Technology Development Co., LTD.  
Address: JF No.41 West Longgang Road, Longgang New District, Shenzhen, China.  
Trade Mark: Reticon  
Product: Module DVR  
Model No.: RCM-M2724, RCM-M2734, RCM-M2744, RCM-M2754, RCM-M2764, RCM-M2774, RCM-M2784, RCM-M2794, RCM-M2804, RCM-M2814, RCM-M2824, RCM-M2834, RCM-M2844, RCM-M2854, RCM-M2864, RCM-M2874, RCM-M2884, RCM-M2894

The test report is issued by the Company subject to its General Conditions of Service printed within Report. Attention is drawn to the limitations of liability, indemnification and jurisdiction clause within Report. This report is in the test report also only in the sample tested unless otherwise stated. This Test Report cannot be reproduced, issued in full, without prior written permission of the Company.  
Other relevant Directives have to be observed.

**RoHS**

Shenzhen L311 Compliance Testing Laboratory Ltd.  
1111 Xixiang Industrial Park, Yantia Park, Xixiang Blvd., Bao'an District, Shenzhen, Guangdong, China.  
Tel: 86(755) 83291122 Fax: 86(755) 83291123  
Www.l311.com.cn Email: admin@l311.com.cn

Manager  
April 10, 2013

XXXXXXXX :XXXXXXXX XXXXXXXXXXXX [DVR](#) XXXXXXXX / XXXXXXXX / XXXXXXXX / XXXXXXXX XXXXXXXXXXXX  
DVR XXXXXXXXXXX XXXXXXXXXXXXXXXXX:





**Richmor**

**OEM & ODM Service**

**Brasil World Cup Supplier**