



SMS Device configure
OTA Remote Updating
AHD 720P/960P
2TB HDD+128GB SD Card

Richmor





Richmor

SMS Device configure
OTA Remote Updating
AHD 720P/960P
2TB HDD+128GB SD Card



Specific

ation

Item		Parameter
OS		Linux
Language		English/Chinese/Customized
Video Compression		H.264 Compression
OSD		Overlays information such as date time and vehicle ID
GUI	Graphical User Interface	Setup system parameters with the remote control.
Video Record System	Video Input	4CH 960P/720P AHD input,aviation connector, 1.0Vp-p, 75Ω
	Video Onput	1 CVBS, 1.0Vp-p, 75Ω,Aviation,Support 1CH Full Screen,4CH Screen view
	Preview	Support 1 channel and 4 channels preview., Support Manual/Alarm Trigger full screen preview
	Resolution	720P/D1/HD1/CIF, MAX:4 channels of 720P and 4 channels of D1
	Image Quality	1-4 levels, 1 is the highest level.
Audio	Video Standard	PAL: 100f/s , CCIR625 line,50field; NTSC: 120f/s, CCIR525 line,60field; CIF: 256Kbps ~ 1.5Mbps, 8 level video quality optional; HD1: 600Kbps ~ 2.5Mbps, 8 level video quality optional; D1: 800Kbps ~ 3Mbps, 8 level video quality optional; 720P: 4Mbps-6Mbps, multi level video quality optional
	Record Mode	The default setting is auto recording after power on. Timed recording, alarm trigger recording and manual recording are supported.
	Audio Input	4CH Aviation Plug Input
	Audio Output	2CH,headphone connect at front panel, BNC Connect on Back panel
	Compression	G.726 compression, 8KB/s speed
Alarm Input		7CH Alarm Input,1CH AD Input,impulse speed input,Alarm Linkage

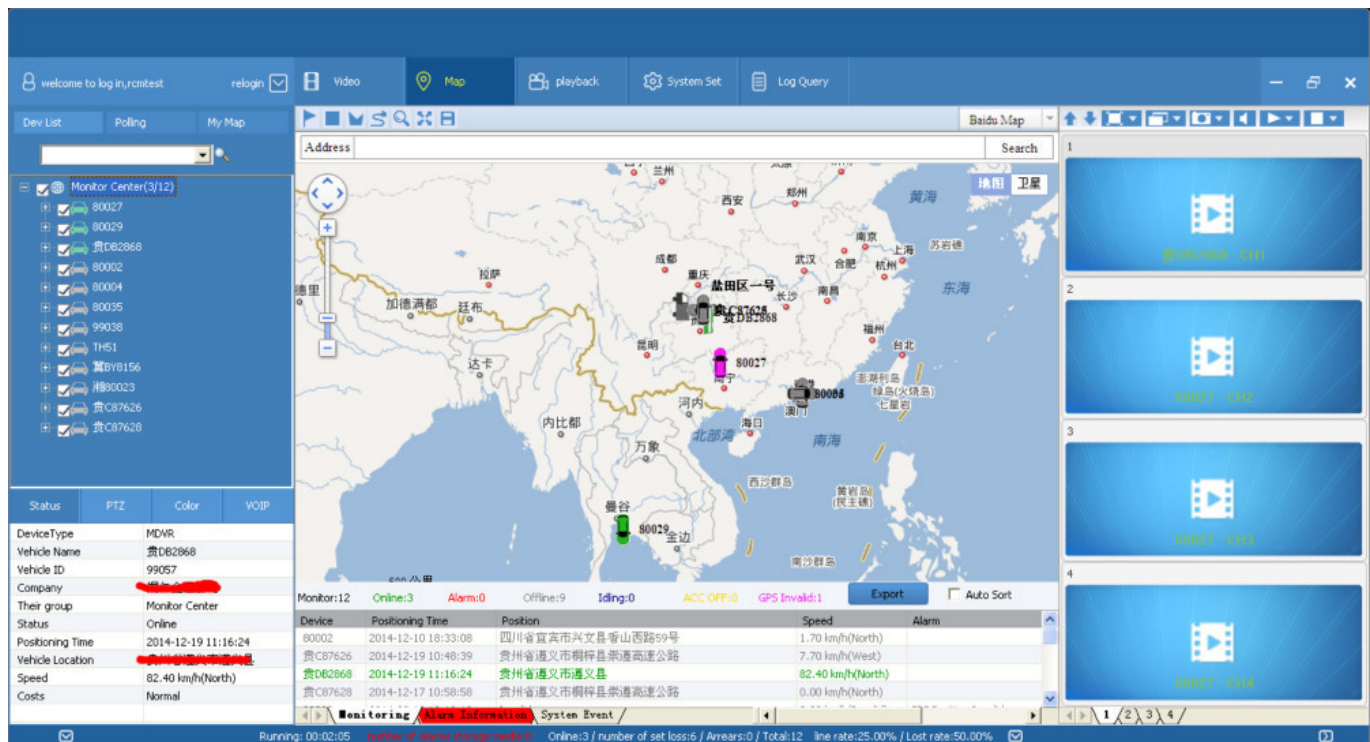
Alarm Output Interface		2CH Alarm Output,Support Light/Sound alarm sensor,Oil/Power cut off 3CH RS232, POS/Fuel Sensor/LED Advertisement Connection
Wireless Transmission		1CH 485 Interface,Connect PTZ Camera Support Built in 3G transmission,, WCDMA, CDMA2000,GPRS, EDGE; Built in 4G module optional, TDD-LTE, FDD-LTE
GPS Position		Support Built GPS/BD Module
Storage	HDD	Max 2.5" 1TB HDD
	SD Card	Max 128GB SD Card Mirror Recording Keep Data Safety
	Update	Support USB Updating, SD Card Updating,OTA Remote Updating
	File Format	H.264
	File System	Special FAT32 File System
Record Replay	USB	USB Interface on Front Panel for data back up by U Disk,Hard Disk
	Video Search	Search By Record Time/Record Type etc
	Playback	Max support 4CH Replay /Stop/Fast/Slow at same time Support forward and backward play at the speed of: x 2,x4,x8,x16.
Security		User/Admin 2 Level Different Password
Optional Functions	Voice Call	Support voice call each other
	TTS Voice Broadcast	Support TTS voice broadcast function.
	Serial Expand	Support LED Advertisement Panel,Oil Sensor, POS,Bus Station Broadcaster,Car OBD,ect.external device
Voltage & Power	Power Management	Wide Voltage.Support Timed/Delay off
	Input Voltage	DC:+6V - +36V
	Output Voltage	+12V~1.5A,+5V~1.5A
	Power	Working <5W
Working Environment	Temperature	-20°C - +70°C
	Humidity	20% - 80%
Ohters	Size	200 (D)* 187(W)* 62(H) mm
	Weight	1.90 Kg

Our Services



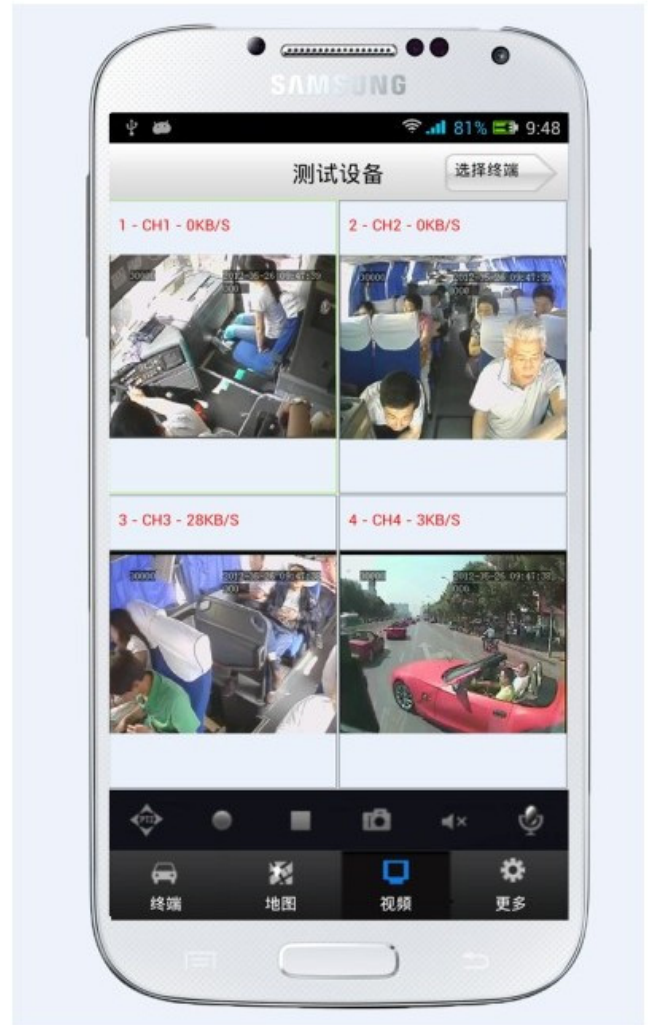
PC&Phone Monitoring

CMSV6 Interface



CMSV6 In Mobile Phone Have all in the palm of your hand

Real-time monitoring via Mobile Phone
Support iPhone, Android, iPad system



Video & Audio Monitoring **Online Vehicle** **GPS**
Satellite Map **Video Storage**
PTZ control **Tracking Display** **Picture**
Snapshot **Voice intercom**

FQA

Q: During playback, the map doesn't show?

A: Possible reasons are as follows;

1.Net cable did not connect to PC;

2.Net works, but the computer can not get to the Internet;

Q: When SD card and HDD records, How is the record coverage?

A: SD card and HDD will record circularly for each other. When they are full, they

will delete the original video records respectively.

Q: The device was opened, HDD was installed, but the device can not record successful.

A: 1. Check the HDD/SD Card was formatted or not, the unformatted HH/SD Card can not be used. Enter into the Main Menu - System Setup - Formatting the new installed HDD/SD Card.

2. If the recording channel is closed, if set the timing recording, it can not recording when it beyond the period of timing recording.

3. If the HDD is connect well, if the HDD/SD light is on.



Richmor Brand Package



Standard Package



Shipping

Strong cooperated with DHL/UPS Etc for fast and safety delivery.

a. 2-5 days after payment cleared for sample order.

b. 5-10 days after payment cleared depends on order quantity for bulk order.

Payment



Exhibition

Richmor

CPSE2012 in Shenzhen



CPSE2013

10.29-10.31

4 Booth we have

Welcome you !!!



CPSE2012-- Guangdong TV Report-Shenzhen Richmor



Certifications

[illegible]

VERIFICATION OF CONFORMITY



Verification of Conformity

Reference No.: **1701284-000719**

Responsible Party	Shenzhen Weikuan Technology Development Co., LTD.
Address	3F Bay 34 West Longgang Road, Longgang New District, Shenzhen, China
Product	Wearble DNR
Model No.	WKM-M00000, WKM-M00001, WKM-M00002, WKM-M00003, WKM-M00004, WKM-M00005, WKM-M00006, WKM-M00007, WKM-M00008, WKM-M00009, WKM-M00010
Trade Mark	Shenzhen
Standards	FCC OTC at Part15 of Subpart B, 15.19, 46.002 DCS-4-2006

Important note:

This device is in-conformance with Part 15 of the FCC Rules and Regulations for radio frequency emission. Operation of this product is subject to the following conditions:

- (1) this device may not interfere with other electronics; and
- (2) this device must accept any interference received, including interference that may cause unusual operation.

Users intend to conform to the applicable FCC Rules and Regulations. The holder of this certificate is in accordance to the most accurate measurement standards possible, and that all necessary steps have been taken to ensure that all production units of the same equipment will continue to comply with the Federal Communications Commission's requirements.




 Manager
 April 16, 2019

Shenzhen L2-C-Compliance Testing Laboratory Ltd.

#1, Angang Industrial Park, Tongye Road, Shean Shi District, Shenzhen, Guangdong, China

Tel: 86-755-8358-1200

http://www.L2-C-test.com

Fax: 86-755-8358-1552

Email: szmanager@l2-c-test.com

CERTIFICATE OF CONFORMITY		
	CERTIFICATE of Conformity Reference No.: L23-0001029470	
	Applicant	Shenzhen Kinoware Technology Development Co., LTD.
	Address	1/F No.44 West Longgang Road, Longgang New District, Shenzhen, China
	Product	Mobile DVR
Model(s)	NCM-M0010R, NCM-M0010R, NCM-M0010R, NCM-M0010R, NCM-M0010R, NCM-M0010R, NCM-M0010R, NCM-M0010R	
Trade Mark	Kinoware	
<p>The submitted products have been tested in accordance with the following European Directives:</p> <p>The EMC Directive 2004/108/EC</p> <p>EN 55022: 2010, EN 55024: 2010</p> <p>The tests were performed in normal operation mode. The test results apply only to the particular sample tested and to the specific batch number only. This certificate applies specifically to the sample investigated or to test reference number only.</p> <p>The CE markings as shown below can be affixed on the product after presentation of necessary technical documentation.</p> <p>Other relevant Directives have to be observed.</p>		
<div style="display: flex; justify-content: space-around; align-items: center;">  <div style="text-align: center;">  <p>Authorized Signer April 10, 2011</p> </div> </div>		
Shenzhen LCC Compliance Testing Laboratory Ltd. 1/F, Ganggang Industrial Park, Tanghe Road, Nan'an District, Shenzhen, Guangdong, China Tel: (86)755-83297122 Fax: (86)755-83297122 Web: www.lcc.com.cn		

 CERTIFICATE <i>of Conformity</i> Reference No.: LCB-00100870	
Applicant:	Sinobest Electronic Technology Development Co., LTD.
Address:	#2 Yu-Xi West Longgang Road, Longgang New District, Shenzhen, China
Product:	Cameras
Model(s)	RCM-IPICV1, RCM-IPCIV1, RCM-LPICV1, RCM-PCIV1, RCM-MPPCIV1, RCM-NPCCV1, RCM-DAL, RCM-HAL, RCM-SAL, RCM-TDMS, RCM-KDS, RCM-AKDS, RCM-BKDS, RCM-GSKS, RCM-RBPKDS, RCM-MDKSDS, RCM-QDAKSHR
Trade Mark:	Boschert
The submitted products have been tested by us with the latest standards and found to conform with the following European Directives:	
The EMC Directive 2004/108/EC	
(EN 55022: 2010; EN 55024: 2010)	
The tests were performed in normal operation mode. The test results apply only to the particular sample tested and to the specific tests carried out. This certificate applies specifically to the samples investigated in our test laboratory number 010.	
This CE marking we affixed below can be affixed on the product after presentation of necessary technical documentation.	
(Other relevant Directives have to be observed)	
	 April 10, 2013
Shenzhen LCB Electronics Testing Laboratory Ltd. #1, Anqunsheng Industrial Park, Tongxin East Road, Shekou Street, Shenzhen, Guangdong China Tel: +86(755) 42626102 http://www.lcb-test.com/	
Fax: +86(755) 42626102 Email: sales@lcb-test.com	

CERTIFICATE OF CONFORMITY



CERTIFICATE of Conformity

2011050101 Recognition of Manufacturer Declaration

Reference No.: C01-001000270

When asked as specified, the submitted sample complies with the requirements of Commission Decision of 21 July 2005 amending Directive 2011050101

Applicant	Shenzhen Richcon Technology Development Co., LTD.
Address	1/F North West Language Road, Langshui New District, Shenzhen, China
Trade Mark	Richcon
Product	Camera
Model(s)	RCM-IP210, RCM-IP215, RCM-UP210, RCM-UP215, RCM-SP100, RCM-SP105, RCM-SP150, RCM-SP155, RCM-SP160, RCM-SP165, RCM-SP170, RCM-SP175, RCM-SP180, RCM-SP185, RCM-SP190, RCM-SP195, RCM-SP200, RCM-SP205, RCM-SP210, RCM-SP215, RCM-SP220, RCM-SP225, RCM-SP230, RCM-SP235, RCM-SP240, RCM-SP245, RCM-SP250, RCM-SP255, RCM-SP260, RCM-SP265, RCM-SP270, RCM-SP275, RCM-SP280, RCM-SP285, RCM-SP290, RCM-SP295, RCM-SP300, RCM-SP305, RCM-SP310, RCM-SP315, RCM-SP320, RCM-SP325, RCM-SP330, RCM-SP335, RCM-SP340, RCM-SP345, RCM-SP350, RCM-SP355, RCM-SP360, RCM-SP365, RCM-SP370, RCM-SP375, RCM-SP380, RCM-SP385, RCM-SP390, RCM-SP395, RCM-SP400, RCM-SP405, RCM-SP410, RCM-SP415, RCM-SP420, RCM-SP425, RCM-SP430, RCM-SP435, RCM-SP440, RCM-SP445, RCM-SP450, RCM-SP455, RCM-SP460, RCM-SP465, RCM-SP470, RCM-SP475, RCM-SP480, RCM-SP485, RCM-SP490, RCM-SP495, RCM-SP500, RCM-SP505, RCM-SP510, RCM-SP515, RCM-SP520, RCM-SP525, RCM-SP530, RCM-SP535, RCM-SP540, RCM-SP545, RCM-SP550, RCM-SP555, RCM-SP560, RCM-SP565, RCM-SP570, RCM-SP575, RCM-SP580, RCM-SP585, RCM-SP590, RCM-SP595, RCM-SP600, RCM-SP605, RCM-SP610, RCM-SP615, RCM-SP620, RCM-SP625, RCM-SP630, RCM-SP635, RCM-SP640, RCM-SP645, RCM-SP650, RCM-SP655, RCM-SP660, RCM-SP665, RCM-SP670, RCM-SP675, RCM-SP680, RCM-SP685, RCM-SP690, RCM-SP695, RCM-SP700, RCM-SP705, RCM-SP710, RCM-SP715, RCM-SP720, RCM-SP725, RCM-SP730, RCM-SP735, RCM-SP740, RCM-SP745, RCM-SP750, RCM-SP755, RCM-SP760, RCM-SP765, RCM-SP770, RCM-SP775, RCM-SP780, RCM-SP785, RCM-SP790, RCM-SP795, RCM-SP800, RCM-SP805, RCM-SP810, RCM-SP815, RCM-SP820, RCM-SP825, RCM-SP830, RCM-SP835, RCM-SP840, RCM-SP845, RCM-SP850, RCM-SP855, RCM-SP860, RCM-SP865, RCM-SP870, RCM-SP875, RCM-SP880, RCM-SP885, RCM-SP890, RCM-SP895, RCM-SP900, RCM-SP905, RCM-SP910, RCM-SP915, RCM-SP920, RCM-SP925, RCM-SP930, RCM-SP935, RCM-SP940, RCM-SP945, RCM-SP950, RCM-SP955, RCM-SP960, RCM-SP965, RCM-SP970, RCM-SP975, RCM-SP980, RCM-SP985, RCM-SP990, RCM-SP995, RCM-SP1000, RCM-SP1005, RCM-SP1010, RCM-SP1015, RCM-SP1020, RCM-SP1025, RCM-SP1030, RCM-SP1035, RCM-SP1040, RCM-SP1045, RCM-SP1050, RCM-SP1055, RCM-SP1060, RCM-SP1065, RCM-SP1070, RCM-SP1075, RCM-SP1080, RCM-SP1085, RCM-SP1090, RCM-SP1095, RCM-SP1100, RCM-SP1105, RCM-SP1110, RCM-SP1115, RCM-SP1120, RCM-SP1125, RCM-SP1130, RCM-SP1135, RCM-SP1140, RCM-SP1145, RCM-SP1150, RCM-SP1155, RCM-SP1160, RCM-SP1165, RCM-SP1170, RCM-SP1175, RCM-SP1180, RCM-SP1185, RCM-SP1190, RCM-SP1195, RCM-SP1200, RCM-SP1205, RCM-SP1210, RCM-SP1215, RCM-SP1220, RCM-SP1225, RCM-SP1230, RCM-SP1235, RCM-SP1240, RCM-SP1245, RCM-SP1250, RCM-SP1255, RCM-SP1260, RCM-SP1265, RCM-SP1270, RCM-SP1275, RCM-SP1280, RCM-SP1285, RCM-SP1290, RCM-SP1295, RCM-SP1300, RCM-SP1305, RCM-SP1310, RCM-SP1315, RCM-SP1320, RCM-SP1325, RCM-SP1330, RCM-SP1335, RCM-SP1340, RCM-SP1345, RCM-SP1350, RCM-SP1355, RCM-SP1360, RCM-SP1365, RCM-SP1370, RCM-SP1375, RCM-SP1380, RCM-SP1385, RCM-SP1390, RCM-SP1395, RCM-SP1400, RCM-SP1405, RCM-SP1410, RCM-SP1415, RCM-SP1420, RCM-SP1425, RCM-SP1430, RCM-SP1435, RCM-SP1440, RCM-SP1445, RCM-SP1450, RCM-SP1455, RCM-SP1460, RCM-SP1465, RCM-SP1470, RCM-SP1475, RCM-SP1480, RCM-SP1485, RCM-SP1490, RCM-SP1495, RCM-SP1500, RCM-SP1505, RCM-SP1510, RCM-SP1515, RCM-SP1520, RCM-SP1525, RCM-SP1530, RCM-SP1535, RCM-SP1540, RCM-SP1545, RCM-SP1550, RCM-SP1555, RCM-SP1560, RCM-SP1565, RCM-SP1570, RCM-SP1575, RCM-SP1580, RCM-SP1585, RCM-SP1590, RCM-SP1595, RCM-SP1600, RCM-SP1605, RCM-SP1610, RCM-SP1615, RCM-SP1620, RCM-SP1625, RCM-SP1630, RCM-SP1635, RCM-SP1640, RCM-SP1645, RCM-SP1650, RCM-SP1655, RCM-SP1660, RCM-SP1665, RCM-SP1670, RCM-SP1675, RCM-SP1680, RCM-SP1685, RCM-SP1690, RCM-SP1695, RCM-SP1700, RCM-SP1705, RCM-SP1710, RCM-SP1715, RCM-SP1720, RCM-SP1725, RCM-SP1730, RCM-SP1735, RCM-SP1740, RCM-SP1745, RCM-SP1750, RCM-SP1755, RCM-SP1760, RCM-SP1765, RCM-SP1770, RCM-SP1775, RCM-SP1780, RCM-SP1785, RCM-SP1790, RCM-SP1795, RCM-SP1800, RCM-SP1805, RCM-SP1810, RCM-SP1815, RCM-SP1820, RCM-SP1825, RCM-SP1830, RCM-SP1835, RCM-SP1840, RCM-SP1845, RCM-SP1850, RCM-SP1855, RCM-SP1860, RCM-SP1865, RCM-SP1870, RCM-SP1875, RCM-SP1880, RCM-SP1885, RCM-SP1890, RCM-SP1895, RCM-SP1900, RCM-SP1905, RCM-SP1910, RCM-SP1915, RCM-SP1920, RCM-SP1925, RCM-SP1930, RCM-SP1935, RCM-SP1940, RCM-SP1945, RCM-SP1950, RCM-SP1955, RCM-SP1960, RCM-SP1965, RCM-SP1970, RCM-SP1975, RCM-SP1980, RCM-SP1985, RCM-SP1990, RCM-SP1995, RCM-SP2000, RCM-SP2005, RCM-SP2010, RCM-SP2015, RCM-SP2020, RCM-SP2025, RCM-SP2030, RCM-SP2035, RCM-SP2040, RCM-SP2045, RCM-SP2050, RCM-SP2055, RCM-SP2060, RCM-SP2065, RCM-SP2070, RCM-SP2075, RCM-SP2080, RCM-SP2085, RCM-SP2090, RCM-SP2095, RCM-SP2100, RCM-SP2105, RCM-SP2110, RCM-SP2115, RCM-SP2120, RCM-SP2125, RCM-SP2130, RCM-SP2135, RCM-SP2140, RCM-SP2145, RCM-SP2150, RCM-SP2155, RCM-SP2160, RCM-SP2165, RCM-SP2170, RCM-SP2175, RCM-SP2180, RCM-SP2185, RCM-SP2190, RCM-SP2195, RCM-SP2200, RCM-SP2205, RCM-SP

CERTIFICATE OF CONFORMITY



CERTIFICATE of Conformity

301769003-Recognition of Hazardous Substances

Reference No.: L301304-100818

When tested as specified, the submitted sample complies with the requirements of Commission Decision of 21 July 2011 amending Directive 2011/65/EU:

Applicant:	Shenzhen Richison Technology Development Co., Ltd.
Address:	3F No.84 West Longgang Road, Longgang New District, Shenzhen, China
Trade Mark:	Richison
Product:	Memory Stick
Models:	RICH-MC9000, RICH-MC9000, RICH-MC9000, RICH-MC9000, RICH-MC9000, RICH-MC9000, RICH-MC9000, RICH-MC9000

This test report is issued to the Company subject to its General Conditions of Service printed elsewhere. Attention is drawn to the limitations of liability, indemnification and jurisdiction clause (where shown). This report is valid in its full extent only to the category/ies listed unless otherwise stated. This Test Report cannot be reproduced, copied in full, without prior written permission of the Company.

Other relevant documents have to be obtained.

RoHS




 Storage
 April 10, 2013

Shenzhen L30 Compliance Testing Laboratories Ltd
 10/F, Industrial Park, Tonghe Road, Xixiang East, Baoan District, Shenzhen,
 Guangdong, China
 Tel: +86755 2666 6666
 www.l30.com.cn

Fax: +86755 2666 6666
 Email: sales@l30.com.cn

Skype:rcmcctvsales5