

RCM-SP5800 專業級 手持式 攝影機 錄影機

型號: **RCM-SP5800**

特點:

1. DVR 錄影機 專業級
2. 3 吋 螢幕 支援 30FPS 錄影 GPS
3. 專業級 攝影機 專業級 攝影
4. 支援 SD 卡 專業級 攝影機
5. 專業級 攝影機 專業級 攝影機 專業級 SD
6. recovery 專業級 攝影機 專業級 攝影機

外觀:

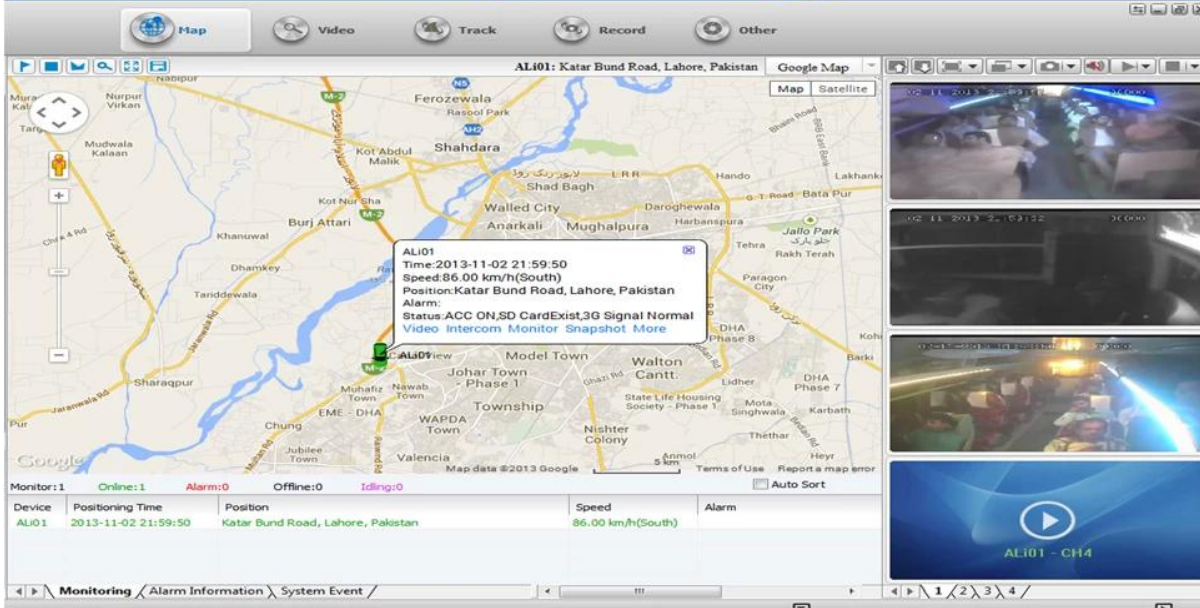




主要性能指标:

项目	规格	说明
外观	尺寸	125mm x 65mm x 25mm
	重量	约 150g
	屏幕	2.8英寸 TFT-LCD, 262K色, 240x320像素
	摄像头	前置摄像头: 200万像素 CMOS 后置摄像头: 300万像素 CMOS & GPS / 3轴陀螺仪 内置GPS 模块
性能	处理器	ARM920T
	内存	RAM: 128MB ROM: 1GB
	操作系统	Android 2.2
	OSD	支持 OSD 功能
	视频	H.264, HISILICON 编解码器 支持 1080P 视频
	分辨率	支持 VGA, QVGA 分辨率
	帧率	QVGA: 400Kbps ~ 1.5 MBps, 4 帧/秒 VGA: 1000kbps ~ 2Mbps, 4 帧/秒
	接口	支持 USB, 蓝牙, 红外, 串口, 耳机

**Vehicle with device for test in AC Coach
Lahore to Sadiq Abad near motorway @ 86Km/h**

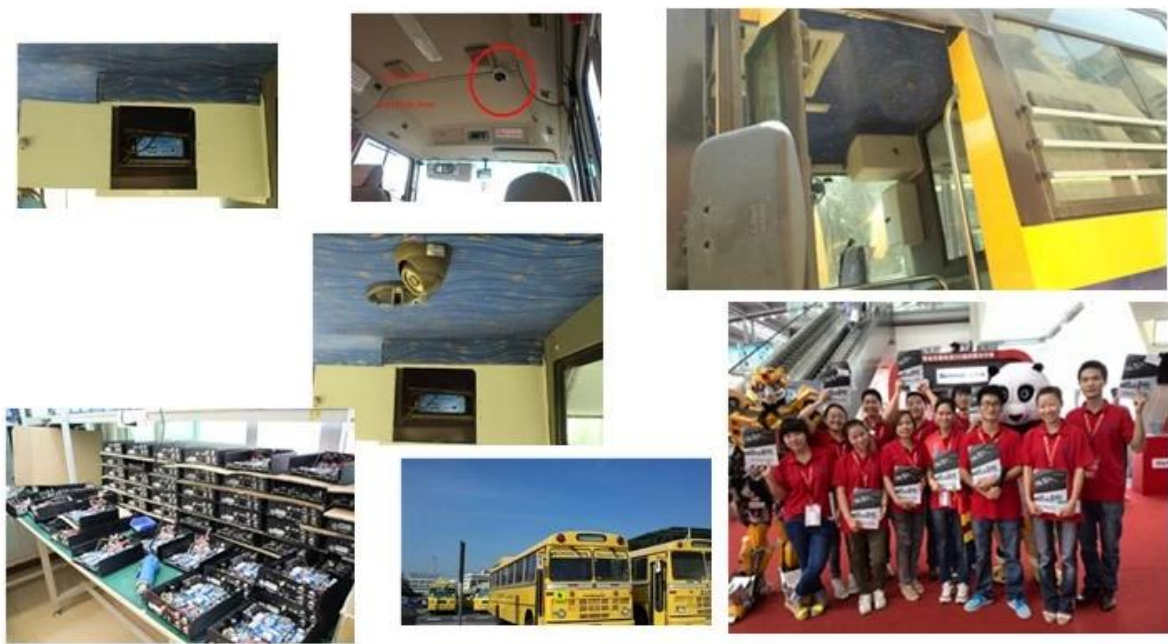
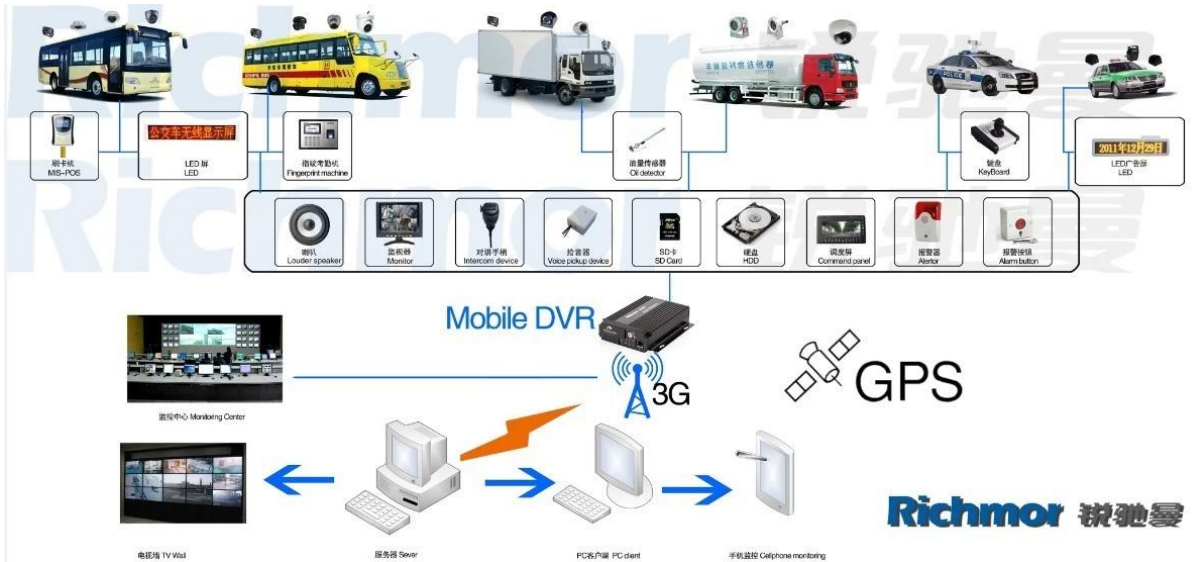


□□□□□□ □□□□ □□□□□□ □□□□□□ □□□□□□ □□□□ □□□□

□ IOS & □□□□□□ □□□□□□ □□□□□□ □□□□□□ □□□□□□ OS



□□□□□□ **DVR** □□□□□□□□ □□□□□□



□□□□:

VERIFICATION OF CONFORMITY

Verification of Conformity
Reference No.: LC0134000970

Responsible Party: Shenzhen Reaktor Technology Development Co., LTD.
Address: 27 No.44 West Longgang Road, Longhua New District, Shenzhen, China
Product: Camera
Models: RCM-PC20A, RCM-PC20L, RCM-LP20A, RCM-LP20L, RCM-AP20A, RCM-AP20L, RCM-300, RCM-300L, RCM-400, RCM-400L, RCM-500, RCM-500L, RCM-600, RCM-600L, RCM-800, RCM-800L, RCM-1000, RCM-1000L
Trade Mark: Reaktor
Standards: FCC CFR 47 PART 15 Subpart B, 2011, ANSI C63.4-2008

Important note:
This device is in compliance with Part 15 of the FCC Rules and Regulations for radio frequency devices. Operation of the product is subject to the following two conditions:
(1) This device may not cause harmful interference, and (2) this device must accept any interference received, including interference that may cause undesired operation.
The EMC Directive 2004/108/EC
EN 55032, EN 55035, EN 55034-2010
This test was performed in normal operation mode. The test results apply only to the particular sample tested and to the specific test setup used. This certificate applies specifically to the sample investigated in our test reference number only.
The CE Marking as shown below can be affixed on the product after preparation of necessary technical documentation.
Clear marked direction form to be obtained.

Shenzhen LCC Compliance Testing Laboratory Ltd.
17, Jingqian Industrial Park, Tengda Road, Bao'an Dist., Bao'an District, Shenzhen, Guangdong, China
Tel: 86(755) 82911122 Fax: 86(755) 82911122
http://www.lcc-test.com Email: admin@lcc-test.com

Manager
April 16, 2013

VERIFICATION OF CONFORMITY

Verification of Conformity
Reference No.: LC0134000970

Responsible Party: Shenzhen Reaktor Technology Development Co., LTD.
Address: 27 No.44 West Longgang Road, Longhua New District, Shenzhen, China
Product: Mobile DVR
Models: RCM-M200A, RCM-M200L, RCM-M300A, RCM-M300L, RCM-M400A, RCM-M400L, RCM-M500A, RCM-M500L
Trade Mark: Reaktor
Standards: FCC CFR 47 PART 15 Subpart B, 2011, ANSI C63.4-2008

Important note:
This device is in compliance with Part 15 of the FCC Rules and Regulations for radio frequency devices. Operation of the product is subject to the following two conditions:
(1) This device may not cause harmful interference, and (2) this device must accept any interference received, including interference that may cause undesired operation.
The EMC Directive 2004/108/EC
EN 55032, EN 55035, EN 55034-2010
This test was performed in normal operation mode. The test results apply only to the particular sample tested and to the specific test setup used. This certificate applies specifically to the sample investigated in our test reference number only.
The CE Marking as shown below can be affixed on the product after preparation of necessary technical documentation.
Clear marked direction form to be obtained.

Shenzhen LCC Compliance Testing Laboratory Ltd.
17, Jingqian Industrial Park, Tengda Road, Bao'an Dist., Bao'an District, Shenzhen, Guangdong, China
Tel: 86(755) 82911122 Fax: 86(755) 82911122
http://www.lcc-test.com Email: admin@lcc-test.com

Manager
April 16, 2013

CERTIFICATE OF CONFORMITY
Reference No.: LC0134000970

Applicant: Shenzhen Reaktor Technology Development Co., LTD.
Address: 27 No.44 West Longgang Road, Longhua New District, Shenzhen, China
Product: Mobile DVR
Models: RCM-M200A, RCM-M200L, RCM-M300A, RCM-M300L, RCM-M400A, RCM-M400L, RCM-M500A, RCM-M500L
Trade Mark: Reaktor

The submitted products have been tested in accordance with the test standards and found in compliance with the following European Directives:
The EMC Directive 2004/108/EC
EN 55032, EN 55035, EN 55034-2010
This test was performed in normal operation mode. The test results apply only to the particular sample tested and to the specific test setup used. This certificate applies specifically to the sample investigated in our test reference number only.
The CE Marking as shown below can be affixed on the product after preparation of necessary technical documentation.
Clear marked direction form to be obtained.

Shenzhen LCC Compliance Testing Laboratory Ltd.
17, Jingqian Industrial Park, Tengda Road, Bao'an Dist., Bao'an District, Shenzhen, Guangdong, China
Tel: 86(755) 82911122 Fax: 86(755) 82911122
http://www.lcc-test.com Email: admin@lcc-test.com

Manager
April 16, 2013

CERTIFICATE OF CONFORMITY

CERTIFICATE of Conformity
Reference No.: LC0134000970

Applicant: Shenzhen Reaktor Technology Development Co., LTD.
Address: 27 No.44 West Longgang Road, Longhua New District, Shenzhen, China
Product: Camera
Models: RCM-PC20A, RCM-PC20L, RCM-LP20A, RCM-LP20L, RCM-AP20A, RCM-AP20L, RCM-300, RCM-300L, RCM-400, RCM-400L, RCM-500, RCM-500L, RCM-600, RCM-600L, RCM-800, RCM-800L, RCM-1000, RCM-1000L
Trade Mark: Reaktor

The submitted products have been tested in accordance with the test standards and found in compliance with the following European Directives:
The EMC Directive 2004/108/EC
EN 55032, EN 55035, EN 55034-2010
This test was performed in normal operation mode. The test results apply only to the particular sample tested and to the specific test setup used. This certificate applies specifically to the sample investigated in our test reference number only.
The CE Marking as shown below can be affixed on the product after preparation of necessary technical documentation.
Clear marked direction form to be obtained.

Shenzhen LCC Compliance Testing Laboratory Ltd.
17, Jingqian Industrial Park, Tengda Road, Bao'an Dist., Bao'an District, Shenzhen, Guangdong, China
Tel: 86(755) 82911122 Fax: 86(755) 82911122
http://www.lcc-test.com Email: admin@lcc-test.com

Manager
April 16, 2013

CERTIFICATE OF CONFORMITY

CERTIFICATE of Conformity
Reference No.: LC0134000970

Applicant: Shenzhen Reaktor Technology Development Co., LTD.
Address: 27 No.44 West Longgang Road, Longhua New District, Shenzhen, China
Trade Mark: Reaktor
Product: Camera
Models: RCM-PC20A, RCM-PC20L, RCM-LP20A, RCM-LP20L, RCM-AP20A, RCM-AP20L, RCM-300, RCM-300L, RCM-400, RCM-400L, RCM-500, RCM-500L, RCM-600, RCM-600L, RCM-800, RCM-800L, RCM-1000, RCM-1000L

The test result is issued by the Company subject to the General Conditions of Service printed on the back of this report or in the conditions of safety, identification and professional services without warranty. The results shown in this test report refer only to the particular tested sample unless otherwise stated. This Test Report cannot be reproduced in any form without prior written permission of the Company.
Clear marked direction form to be obtained.

Shenzhen LCC Compliance Testing Laboratory Ltd.
17, Jingqian Industrial Park, Tengda Road, Bao'an Dist., Bao'an District, Shenzhen, Guangdong, China
Tel: 86(755) 82911122 Fax: 86(755) 82911122
http://www.lcc-test.com Email: admin@lcc-test.com

Manager
April 16, 2013

CERTIFICATE OF CONFORMITY

CERTIFICATE of Conformity
Reference No.: LC0134000970

Applicant: Shenzhen Reaktor Technology Development Co., LTD.
Address: 27 No.44 West Longgang Road, Longhua New District, Shenzhen, China
Trade Mark: Reaktor
Product: Mobile DVR
Models: RCM-M200A, RCM-M200L, RCM-M300A, RCM-M300L, RCM-M400A, RCM-M400L, RCM-M500A, RCM-M500L

The test report is issued by the Company subject to the General Conditions of Service printed on the back of this report or in the conditions of safety, identification and professional services without warranty. The results shown in this test report refer only to the particular tested sample unless otherwise stated. This Test Report cannot be reproduced in any form without prior written permission of the Company.
Clear marked direction form to be obtained.

Shenzhen LCC Compliance Testing Laboratory Ltd.
17, Jingqian Industrial Park, Tengda Road, Bao'an Dist., Bao'an District, Shenzhen, Guangdong, China
Tel: 86(755) 82911122 Fax: 86(755) 82911122
http://www.lcc-test.com Email: admin@lcc-test.com

Manager
April 16, 2013

□□□□ □□ □□□□□□□□:



SD Mobile DVR with 3G GPS



SD Mobile DVR with WIFI 3G GPS G-Sensor

□□□□□□ □□□□:

□□□□ □□□□: T / T□ □□ □□ □□□□ □□□□ □□□□□□ □□□□□□



Richmor

OEM & ODM Service

Brasil World Cup Supplier



Inner Training after study from Alibaba in July



Technical Training For Fast Response to Customer Richmor 锐驰曼



lecturer for Execution