

RCM-SP5800 專業級 手持式 攝影機 產品 說明書

產品名稱: **RCM-SP5800**

產品特點:

- 1. DVR 內置 攝影機 鏡頭
- 2. 3 英寸 液晶 顯示器 GPS 定位
- 3. 專業級 攝影機 鏡頭
- 4. 內置 SD 卡 插槽 可擴展 存儲
- 5. 專業級 攝錄影 功能 可擴展 存儲 SD
- 6. recovery 功能 可擴展 存儲

產品圖:



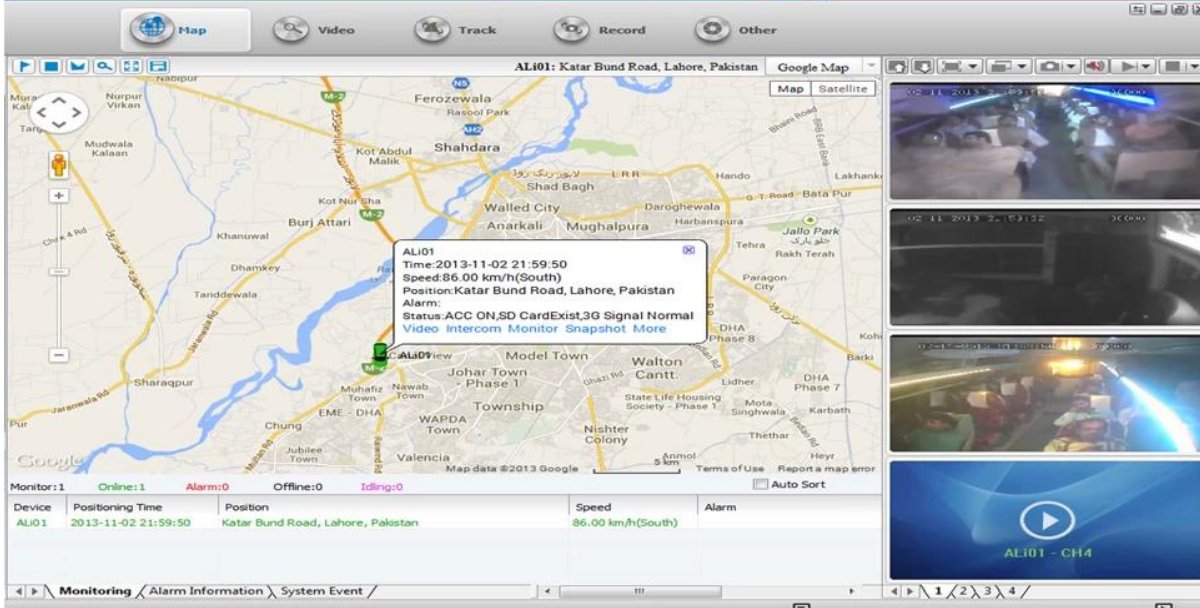


主要性能指标:

| 名称  | 规格   | 说明                            |
|-----|------|-------------------------------|
| 整机  | 外形尺寸 | 125mm x 65mm x 25mm           |
|     | 重量   | 约 150g                        |
|     | 工作温度 | -20℃ ~ 60℃                    |
|     | 防护等级 | IP67                          |
| 摄像头 | 像素   | 70万                           |
|     | OSD  | 支持 OSD 菜单                     |
|     | 编码   | H.264, HISILICON              |
|     | 分辨率  | 支持 VGA, QVGA                  |
|     | 帧率   | QVGA: 400Kbps ~ 1.5Mbps, 4帧/秒 |
|     | 帧率   | VGA: 1000kbps ~ 2Mbps, 4帧/秒   |
|     | 镜头   | 3.2mm                         |
|     | 接口   | 支持 USB, RS485                 |



**Vehicle with device for test in AC Coach  
Lahore to Sadiq Abad near motorway @ 86Km/h**

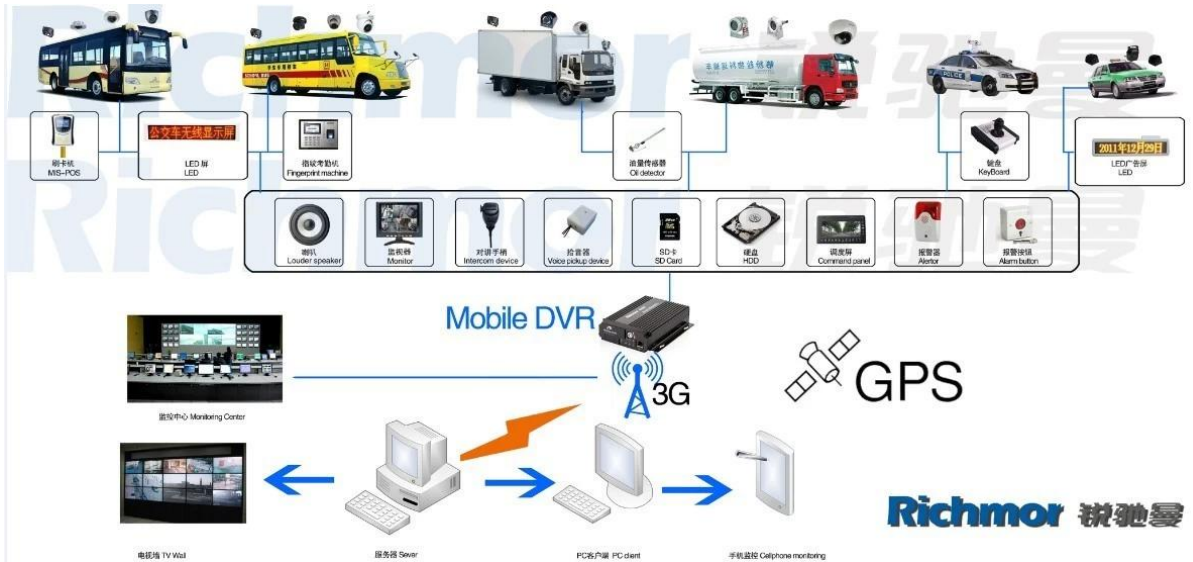


□□□□□□ □□□□ □□□□□□ □□□□□□ □□□□□□ □□□□ □

□ IOS & □□□□□□ □□□□□□ □□□□□□ □□□□□□ OS



□□□□□□ **DVR** □□□□□□□□ □□□□□□



□□□□:



**VERIFICATION OF CONFORMITY**

**Verification of Conformity**  
Reference No.: LC0134008719

Responsible Party: Shenzhen Reaktor Technology Development Co., LTD.  
Address: 27 No.48 West Longgang Road, Longhua New District, Shenzhen, China  
Product: Camera  
Models: RCM-PC20A, RCM-PC20L, RCM-LP20A, RCM-LP20L, RCM-AP20A, RCM-AP20L, RCM-300, RCM-300L, RCM-400, RCM-400L, RCM-500, RCM-500L, RCM-600, RCM-600L, RCM-800, RCM-800L, RCM-1000, RCM-1000L  
Trade Mark: Reaktor  
Standards: FCC CFR 47 PART 15 Subpart B, 2011, ANSI C63.4-2008

**Important note:**  
This device is in compliance with Part 15 of the FCC Rules and Regulations for radio frequency devices. Operation of the product is subject to the following two conditions:  
(1) This device may not cause harmful interference, and (2) this device must accept any interference received, including interference that may cause undesired operation.  
The EMC Directive 2014/53/EU  
The test was performed in normal operation mode. The test results apply only to the particular sample tested and to the specific test carried out. This certificate applies specifically to the sample investigated in our test reference number only.  
The CE marking is shown below and is affixed to the product after preparation of necessary technical documentation.  
Your request/declaration form to be obtained.

Shenzhen LCC Compliance Testing Laboratory Ltd.  
17, Jingqian Industrial Park, Tengda Road, Bao'an Dist., Bao'an District, Shenzhen, Guangdong, China  
Tel: 86755-82911122 Fax: 86755-82911122  
http://www.lcc-test.com Email: admin@lcc-test.com

Manager  
April 16, 2013

**VERIFICATION OF CONFORMITY**

**Verification of Conformity**  
Reference No.: LC0134008719

Responsible Party: Shenzhen Reaktor Technology Development Co., LTD.  
Address: 27 No.48 West Longgang Road, Longhua New District, Shenzhen, China  
Product: Media DVR  
Models: RCM-M200A, RCM-M200L, RCM-M300A, RCM-M300L, RCM-M400A, RCM-M400L, RCM-M500A, RCM-M500L, RCM-M600A, RCM-M600L, RCM-M800A, RCM-M800L  
Trade Mark: Reaktor  
Standards: FCC CFR 47 PART 15 Subpart B, 2011, ANSI C63.4-2008

**Important note:**  
This device is in compliance with Part 15 of the FCC Rules and Regulations for radio frequency devices. Operation of the product is subject to the following two conditions:  
(1) This device may not cause harmful interference, and (2) this device must accept any interference received, including interference that may cause undesired operation.  
The EMC Directive 2014/53/EU  
The test was performed in normal operation mode. The test results apply only to the particular sample tested and to the specific test carried out. This certificate applies specifically to the sample investigated in our test reference number only.  
The CE marking is shown below and is affixed to the product after preparation of necessary technical documentation.  
Your request/declaration form to be obtained.

Shenzhen LCC Compliance Testing Laboratory Ltd.  
17, Jingqian Industrial Park, Tengda Road, Bao'an Dist., Bao'an District, Shenzhen, Guangdong, China  
Tel: 86755-82911122 Fax: 86755-82911122  
http://www.lcc-test.com Email: admin@lcc-test.com

Manager  
April 16, 2013

**CERTIFICATE OF CONFORMITY**  
Reference No.: LC0134008719

Applicant: Shenzhen Reaktor Technology Development Co., LTD.  
Address: 27 No.48 West Longgang Road, Longhua New District, Shenzhen, China  
Product: Media DVR  
Models: RCM-M200A, RCM-M200L, RCM-M300A, RCM-M300L, RCM-M400A, RCM-M400L, RCM-M500A, RCM-M500L, RCM-M600A, RCM-M600L, RCM-M800A, RCM-M800L  
Trade Mark: Reaktor

The submitted products have been tested in accordance with the test standards and found in compliance with the following European Directives:  
The EMC Directive 2014/53/EU  
EN 55032: 2012, EN 55034: 2012  
The test was performed in normal operation mode. The test results apply only to the particular sample tested and to the specific test carried out. This certificate applies specifically to the sample investigated in our test reference number only.  
The CE marking is shown below and is affixed to the product after preparation of necessary technical documentation.  
Your request/declaration form to be obtained.

Shenzhen LCC Compliance Testing Laboratory Ltd.  
17, Jingqian Industrial Park, Tengda Road, Bao'an Dist., Bao'an District, Shenzhen, Guangdong, China  
Tel: 86755-82911122 Fax: 86755-82911122  
http://www.lcc-test.com Email: admin@lcc-test.com

Manager  
April 16, 2013

**CERTIFICATE OF CONFORMITY**

**CERTIFICATE of Conformity**  
Reference No.: LC0134008719

Applicant: Shenzhen Reaktor Technology Development Co., LTD.  
Address: 27 No.48 West Longgang Road, Longhua New District, Shenzhen, China  
Product: Camera  
Models: RCM-PC20A, RCM-PC20L, RCM-LP20A, RCM-LP20L, RCM-AP20A, RCM-AP20L, RCM-300, RCM-300L, RCM-400, RCM-400L, RCM-500, RCM-500L, RCM-600, RCM-600L, RCM-800, RCM-800L, RCM-1000, RCM-1000L  
Trade Mark: Reaktor

The submitted products have been tested in accordance with the test standards and found in compliance with the following European Directives:  
The EMC Directive 2014/53/EU  
EN 55032: 2012, EN 55034: 2012  
The test was performed in normal operation mode. The test results apply only to the particular sample tested and to the specific test carried out. This certificate applies specifically to the sample investigated in our test reference number only.  
The CE marking is shown below and is affixed to the product after preparation of necessary technical documentation.  
Your request/declaration form to be obtained.

Shenzhen LCC Compliance Testing Laboratory Ltd.  
17, Jingqian Industrial Park, Tengda Road, Bao'an Dist., Bao'an District, Shenzhen, Guangdong, China  
Tel: 86755-82911122 Fax: 86755-82911122  
http://www.lcc-test.com Email: admin@lcc-test.com

Manager  
April 16, 2013

**CERTIFICATE OF CONFORMITY**

**CERTIFICATE of Conformity**  
Reference No.: LC0134008719

Applicant: Shenzhen Reaktor Technology Development Co., LTD.  
Address: 27 No.48 West Longgang Road, Longhua New District, Shenzhen, China  
Trade Mark: Reaktor  
Product: Camera  
Models: RCM-PC20A, RCM-PC20L, RCM-LP20A, RCM-LP20L, RCM-AP20A, RCM-AP20L, RCM-300, RCM-300L, RCM-400, RCM-400L, RCM-500, RCM-500L, RCM-600, RCM-600L, RCM-800, RCM-800L, RCM-1000, RCM-1000L

The test result is issued by the Company subject to the General Conditions of Service printed on the back of this report or in the conditions of safety, identification and professional services without warranty. The results shown in this test report refer only to the particular tested sample unless otherwise stated. This Test Report cannot be reproduced in any form without prior written permission of the Company.  
Your request/declaration form to be obtained.

Shenzhen LCC Compliance Testing Laboratory Ltd.  
17, Jingqian Industrial Park, Tengda Road, Bao'an Dist., Bao'an District, Shenzhen, Guangdong, China  
Tel: 86755-82911122 Fax: 86755-82911122  
http://www.lcc-test.com Email: admin@lcc-test.com

Manager  
April 16, 2013

**CERTIFICATE OF CONFORMITY**

**CERTIFICATE of Conformity**  
Reference No.: LC0134008719

Applicant: Shenzhen Reaktor Technology Development Co., LTD.  
Address: 27 No.48 West Longgang Road, Longhua New District, Shenzhen, China  
Trade Mark: Reaktor  
Product: Media DVR  
Models: RCM-M200A, RCM-M200L, RCM-M300A, RCM-M300L, RCM-M400A, RCM-M400L, RCM-M500A, RCM-M500L, RCM-M600A, RCM-M600L, RCM-M800A, RCM-M800L

The test report is issued by the Company subject to the General Conditions of Service printed on the back of this report or in the conditions of safety, identification and professional services without warranty. The results shown in this test report refer only to the particular tested sample unless otherwise stated. This Test Report cannot be reproduced in any form without prior written permission of the Company.  
Your request/declaration form to be obtained.

Shenzhen LCC Compliance Testing Laboratory Ltd.  
17, Jingqian Industrial Park, Tengda Road, Bao'an Dist., Bao'an District, Shenzhen, Guangdong, China  
Tel: 86755-82911122 Fax: 86755-82911122  
http://www.lcc-test.com Email: admin@lcc-test.com

Manager  
April 16, 2013

□□□□ □□ □□□□□□□□:



SD Mobile DVR with 3G GPS



SD Mobile DVR with WIFI 3G GPS G-Sensor

□□□□□□ □□□□:

□□□□ □□□□: T / T□ □□ □□ □□□□ □□□□ □□□□□□ □□□□□□





# Richmor

## OEM & ODM Service

### Brasil World Cup Supplier



Inner Training after study from Alibaba in July



Technical Training For Fast Response to Customer Richmor 锐驰曼



lecturer for Execution