

RCM-SP5800 專業型 手持式 攝影機 產品 說明書

型號: **RCM-SP5800**

主要特點:

1. DVR 內置 攝影機 鏡頭
2. 3 英寸 彩色 液晶 顯示屏 GPS
3. 專業型 攝影機 鏡頭
4. 內置 SD 卡 插槽 可擴展 存儲
5. 內置 電池 可更換 電池 容量 大 SD
6. recovery 功能 可恢復 數據 丟失

外觀:





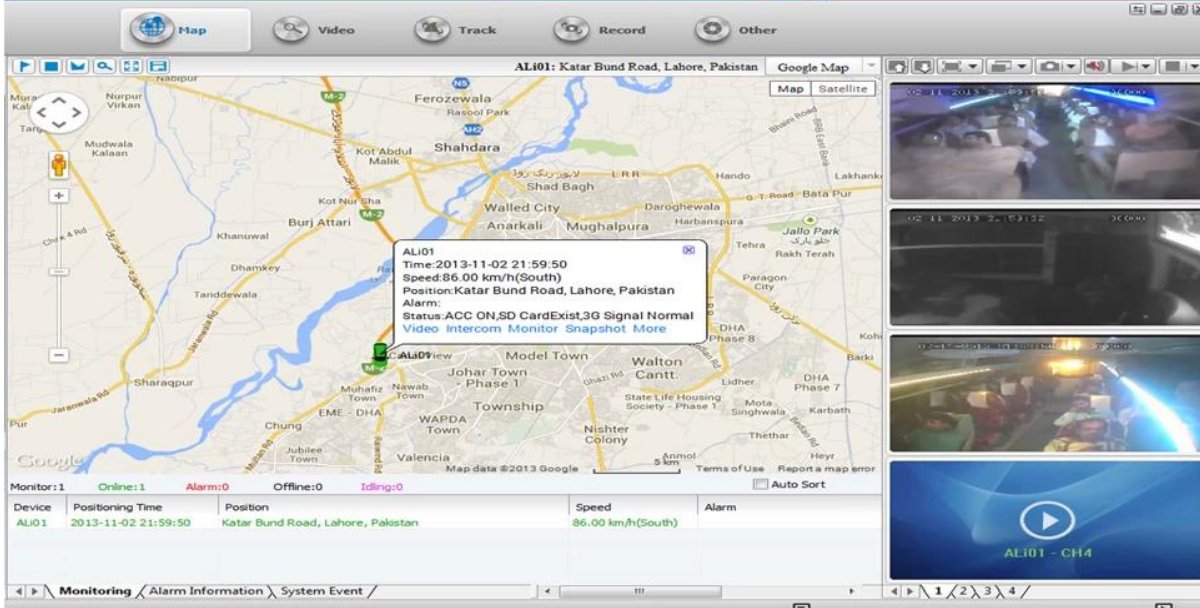
主要性能指标:

性能指标	主要性能指标	性能指标
基本性能	操作系统	Android
	处理器	高通骁龙 S550 处理器 主频 1.5GHz :摄像头 前置摄像头 :前置摄像头 后置摄像头 & 前置摄像头 前置摄像头 前置摄像头 & GPS / 3 前置摄像头 前置摄像头G 前置摄像头 前置摄像头
	内存	前置摄像头 前置摄像头 前置摄像头 前置摄像头 前置摄像头
	屏幕	前置摄像头 前置摄像头 前置摄像头 前置摄像头
摄像头	摄像头	70 :前置摄像头 前置摄像头 前置摄像头 前置摄像头 前置摄像头 前置摄像头 CMOS
	OSD	前置摄像头 前置摄像头 前置摄像头 前置摄像头 GPS 前置摄像头
	格式	H.264. HISILICON 前置摄像头 前置摄像头 前置摄像头 前置摄像头.
	分辨率	前置摄像头 VGA 前置摄像头 QVGA 前置摄像头
	前置摄像头 前置摄像头 QVGA	QVGA: 400Kbps ~ 1.5 前置摄像头MBps 4 前置摄像头 前置摄像头 前置摄像头
	前置摄像头 前置摄像头 VGA	VGA: 1000kbps ~ 2Mbps 4 前置摄像头 前置摄像头 前置摄像头 前置摄像头
	前置摄像头 前置摄像头	前置摄像头 前置摄像头 前置摄像头 前置摄像头 前置摄像头 前置摄像头
前置摄像头 前置摄像头	前置摄像头	

MP3	MP3	MP3
	MP3	1 MP3 MP3 MP3 MP3 W
	MP3	G.726
MP3	MP3	MP3 micro-SD 1 MP3G ~ 32G
	MP3 / MP3	ASF MP3 MP3 MP3 FAT32
	MP3	MP3 MP3 MP3 MP3 MP3
	MP3	MP3 MP3 MP3 MP3 MP3 MP3
	MP3	MP3 MP3 MP3 MP3 MP3 MP3 MP3 MP3 MP3 MP3 MP3 MP3 MP3 MP3 MP3 MP3 MP3 MP3 MP3 MP3
USB MP3	MP3	MP3 MP3 MP3 MP3 MP3 USB MP3 MP3
MP3 MP3	MP3	3 MP3 MP3 MP3 MP3 MP3 MP3 MP3 WCDMA CDMA2000 TD-SCDMA MP3 MP3 MP3 MP3 MP3 MP3 .MP3 MP3 EDGE.
MP3 MP3	MP3	MP3 MP3 MP3 MP3 MP3 MP3
MP3	MP3	2.4 MP3
	MP3	TFT
	MP3	480 * 234
MP3	MP3 MP3	MP3 MP3 MP3 SD MP3 MP3
MP3	MP3	-20 ° C ~ + 50 ° C
	MP3	20 80 MP3
MP3	MP3	50 (W) X90 (H) X28 (D) MP3
	MP3	70 (W) X110 (H) X28 (D) MP3
MP3	MP3	95 :MP3 MP3G 307.5 :MP3 MP3g
	MP3	238 :MP3 MP3g 352 :MP3 MP3g

MP3 CMS MP3 MP3:

**Vehicle with device for test in AC Coach
Lahore to Sadiq Abad near motorway @ 86Km/h**

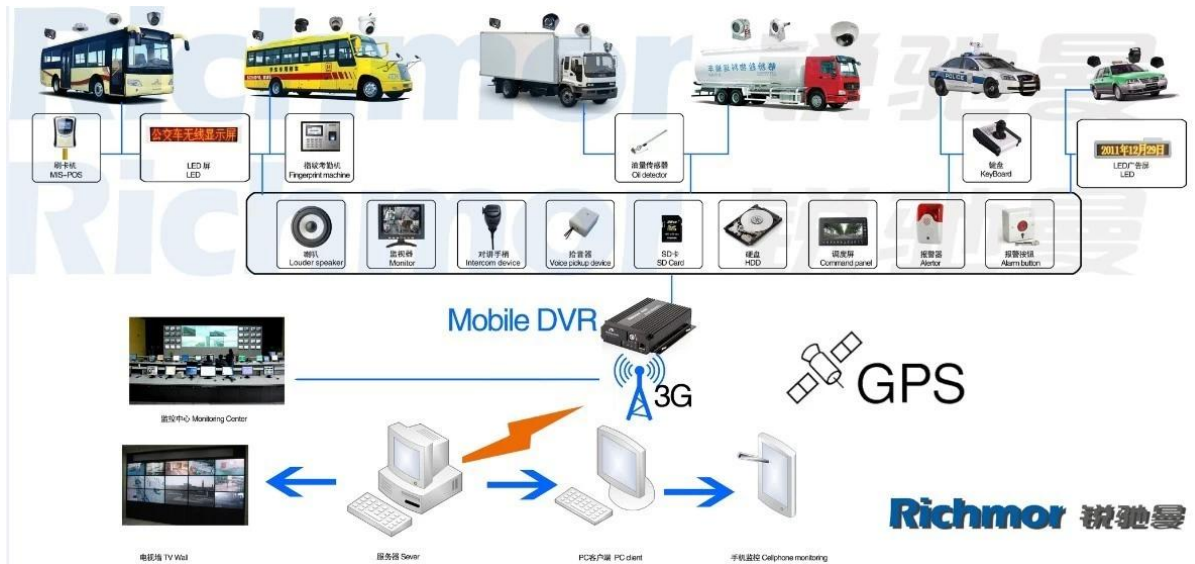


□□□□□□ □□□□ □□□□□□ □□□□□□ □□□□□□ □□□□ □□□□

□ IOS & □□□□□□ □□□□□□ □□□□□□ □□□□□□ □□□□□□ OS



□□□□□□ **DVR** □□□□□□□□ □□□□□□



□□□□:

VERIFICATION OF CONFORMITY

Verification of Conformity
Reference No.: LC0134008719

Responsible Party: Shenzhen Reaktor Technology Development Co., LTD.
Address: 27 No.48 West Longgang Road, Longhua New District, Shenzhen, China
Product: Camera
Models: RCM-PC20A, RCM-PC20L, RCM-LP20A, RCM-LP20L, RCM-AP20A, RCM-AP20L, RCM-300, RCM-300L, RCM-400, RCM-400L, RCM-500, RCM-500L, RCM-600, RCM-600L, RCM-800, RCM-800L, RCM-1000, RCM-1000L
Trade Mark: Reaktor
Standards: FCC CFR 47 PART 15 Subpart B, 2011, ANSI C63.4-2008

Important note:
This device is in compliance with Part 15 of the FCC Rules and Regulations for radio frequency devices. Operation of the product is subject to the following two conditions:
(1) This device may not cause harmful interference, and (2) this device must accept any interference received, including interference that may cause undesired operation.
The EMC Directive 2014/53/EU
The test was performed in normal operation mode. The test results apply only to the particular sample tested and to the specific test carried out. This certificate applies specifically to the sample investigated in our test reference number only.
The CE marking is shown below and is affixed to the product after preparation of necessary technical documentation.
Clear marked direction form to be obtained.

Shenzhen LCC Compliance Testing Laboratory Ltd.
27, Longgang Industrial Park, Longgang Road, West No. 48, Bao'an District, Shenzhen, Guangdong, China
Tel: 86755-82911122 Fax: 86755-82911122
http://www.lcc-test.com Email: admin@lcc-test.com

VERIFICATION OF CONFORMITY

Verification of Conformity
Reference No.: LC0134008719

Responsible Party: Shenzhen Reaktor Technology Development Co., LTD.
Address: 27 No.48 West Longgang Road, Longhua New District, Shenzhen, China
Product: Media DVR
Models: RCM-M200A, RCM-M200L, RCM-M300A, RCM-M300L, RCM-M400A, RCM-M400L, RCM-M500A, RCM-M500L, RCM-M600A, RCM-M600L
Trade Mark: Reaktor
Standards: FCC CFR 47 PART 15 Subpart B, 2011, ANSI C63.4-2008

Important note:
This device is in compliance with Part 15 of the FCC Rules and Regulations for radio frequency devices. Operation of the product is subject to the following two conditions:
(1) This device may not cause harmful interference, and (2) this device must accept any interference received, including interference that may cause undesired operation.
The EMC Directive 2014/53/EU
The test was performed in normal operation mode. The test results apply only to the particular sample tested and to the specific test carried out. This certificate applies specifically to the sample investigated in our test reference number only.
The CE marking is shown below and is affixed to the product after preparation of necessary technical documentation.
Clear marked direction form to be obtained.

Shenzhen LCC Compliance Testing Laboratory Ltd.
27, Longgang Industrial Park, Longgang Road, West No. 48, Bao'an District, Shenzhen, Guangdong, China
Tel: 86755-82911122 Fax: 86755-82911122
http://www.lcc-test.com Email: admin@lcc-test.com

CERTIFICATE OF CONFORMITY
Reference No.: LC0134008719

Applicant: Shenzhen Reaktor Technology Development Co., LTD.
Address: 27 No.48 West Longgang Road, Longhua New District, Shenzhen, China
Product: Media DVR
Models: RCM-M200A, RCM-M200L, RCM-M300A, RCM-M300L, RCM-M400A, RCM-M400L, RCM-M500A, RCM-M500L, RCM-M600A, RCM-M600L
Trade Mark: Reaktor

The submitted products have been tested in accordance with the relevant standards and found to be compliant with the following European Directives:
The EMC Directive 2014/53/EU
EN 55032: 2015, EN 55034: 2015
The test was performed in normal operation mode. The test results apply only to the particular sample tested and to the specific test carried out. This certificate applies specifically to the sample investigated in our test reference number only.
The CE marking is shown below and is affixed to the product after preparation of necessary technical documentation.
Clear marked direction form to be obtained.

Shenzhen LCC Compliance Testing Laboratory Ltd.
27, Longgang Industrial Park, Longgang Road, West No. 48, Bao'an District, Shenzhen, Guangdong, China
Tel: 86755-82911122 Fax: 86755-82911122
http://www.lcc-test.com Email: admin@lcc-test.com

CERTIFICATE OF CONFORMITY

CERTIFICATE of Conformity
Reference No.: LC0134008875

Applicant: Shenzhen Reaktor Technology Development Co., LTD.
Address: 27 No.48 West Longgang Road, Longhua New District, Shenzhen, China
Product: Camera
Models: RCM-PC20A, RCM-PC20L, RCM-LP20A, RCM-LP20L, RCM-AP20A, RCM-AP20L, RCM-300, RCM-300L, RCM-400, RCM-400L, RCM-500, RCM-500L, RCM-600, RCM-600L, RCM-800, RCM-800L, RCM-1000, RCM-1000L
Trade Mark: Reaktor

The submitted products have been tested in accordance with the relevant standards and found to be compliant with the following European Directives:
The EMC Directive 2014/53/EU
EN 55032: 2015, EN 55034: 2015
The test was performed in normal operation mode. The test results apply only to the particular sample tested and to the specific test carried out. This certificate applies specifically to the sample investigated in our test reference number only.
The CE marking is shown below and is affixed to the product after preparation of necessary technical documentation.
Clear marked direction form to be obtained.

Shenzhen LCC Compliance Testing Laboratory Ltd.
27, Longgang Industrial Park, Longgang Road, West No. 48, Bao'an District, Shenzhen, Guangdong, China
Tel: 86755-82911122 Fax: 86755-82911122
http://www.lcc-test.com Email: admin@lcc-test.com

CERTIFICATE OF CONFORMITY

CERTIFICATE of Conformity
2011/65/EU Restriction of Hazardous Substances
Reference No.: LC0134008875

Applicant: Shenzhen Reaktor Technology Development Co., LTD.
Address: 27 No.48 West Longgang Road, Longhua New District, Shenzhen, China
Trade Mark: Reaktor
Product: Camera
Models: RCM-PC20A, RCM-PC20L, RCM-LP20A, RCM-LP20L, RCM-AP20A, RCM-AP20L, RCM-300, RCM-300L, RCM-400, RCM-400L, RCM-500, RCM-500L, RCM-600, RCM-600L, RCM-800, RCM-800L, RCM-1000, RCM-1000L

The test result is issued by the Company subject to the General Conditions of Service printed on the back of this report. The results shown in this test report refer only to the particular tested sample unless otherwise stated. This Test Report cannot be reproduced in any form without prior written permission of the Company.
Clear marked direction form to be obtained.

Shenzhen LCC Compliance Testing Laboratory Ltd.
27, Longgang Industrial Park, Longgang Road, West No. 48, Bao'an District, Shenzhen, Guangdong, China
Tel: 86755-82911122 Fax: 86755-82911122
http://www.lcc-test.com Email: admin@lcc-test.com

CERTIFICATE OF CONFORMITY

CERTIFICATE of Conformity
2011/65/EU Restriction of Hazardous Substances
Reference No.: LC0134008875

Applicant: Shenzhen Reaktor Technology Development Co., LTD.
Address: 27 No.48 West Longgang Road, Longhua New District, Shenzhen, China
Trade Mark: Reaktor
Product: Media DVR
Models: RCM-M200A, RCM-M200L, RCM-M300A, RCM-M300L, RCM-M400A, RCM-M400L, RCM-M500A, RCM-M500L, RCM-M600A, RCM-M600L

The test report is issued by the Company subject to the General Conditions of Service printed on the back of this report. The results shown in this test report refer only to the particular tested sample unless otherwise stated. This Test Report cannot be reproduced in any form without prior written permission of the Company.
Clear marked direction form to be obtained.

Shenzhen LCC Compliance Testing Laboratory Ltd.
27, Longgang Industrial Park, Longgang Road, West No. 48, Bao'an District, Shenzhen, Guangdong, China
Tel: 86755-82911122 Fax: 86755-82911122
http://www.lcc-test.com Email: admin@lcc-test.com

□□□□□□ □□ □□□□□□□□□□:



SD Mobile DVR with 3G GPS



SD Mobile DVR with WIFI 3G GPS G-Sensor

□□□□□□ □□□□:

□□□□ □□□□: T / T□ □□ □□ □□□□ □□□□ □□□□□□ □□□□□□

□□□□ □□□□ □□ □□□□ 5 □□□□ □□□□ :□□□□□□ □□□□□□ □□ □□□□□□□□.

□□□□ 12 :□□□□□□□□

□□□□□□ □□□□□□: DHL □ UPS □ □□□ □□ □□ □□ □□□□□□□□□□ □□□□□□□□ □□□□ □□□□□□□□

□□□□□□□□ □□□□□□□□ □□□□:



Richmor Brand Package

Standard Package

:□□□□□□ □□□□ □□ □□ □□□□

□□□□□□□□□□ □□□□□□ □□□□□□ □□□□ □□□□ □□□□□□□□□□ □□□□□□ □□□□ □□□□ .1.

2. □□□□□□□□ □□□□□□ □□□□□□ □□□□ □□□□□□□□ □□ □□□□ □□□□□□□□□□.

3. □□□□□□□□ □□□□ □□□□ □□□□

□□□□ □□□□ □□□□ □□ □□□□ □□□□□□ □□ □□□□ □□□□ □□□□□□ □□□□□□□□ .4 □□□□□□.

□□□□□□□□ □□□□□□ □□□□□□ □□□□□□ □□□□□□ .5 □□□□□□.

□□□□ □□□□□□ □□□□ □□ □□ □□□□□□ □□ □□□□□□ □□□□□□ □□ □□□□ / □□□□□□□□ □□□□□□ □□□□□□ :□□□□□□ □□□□□□ □□□□□□□□.

□□□□ □□□□:



Richmor

OEM & ODM Service

Brasil World Cup Supplier



Inner Training after study from Alibaba in July



Technical Training For Fast Response to Customer Richmor 锐驰曼



lecturer for Execution