

RCM-SP5800 專業級 手持式 攝影機 產品 說明書

產品名稱: **RCM-SP5800**

產品特點:

- 1. DVR 內置 攝影機 鏡頭
- 2. 3 英寸 液晶 顯示屏 GPS 定位
- 3. 專業級 攝影機 鏡頭
- 4. 內置 SD 卡 插槽
- 5. 內置 電池 充電 指示 燈
- 6. recovery 功能 恢復 數據

產品圖:





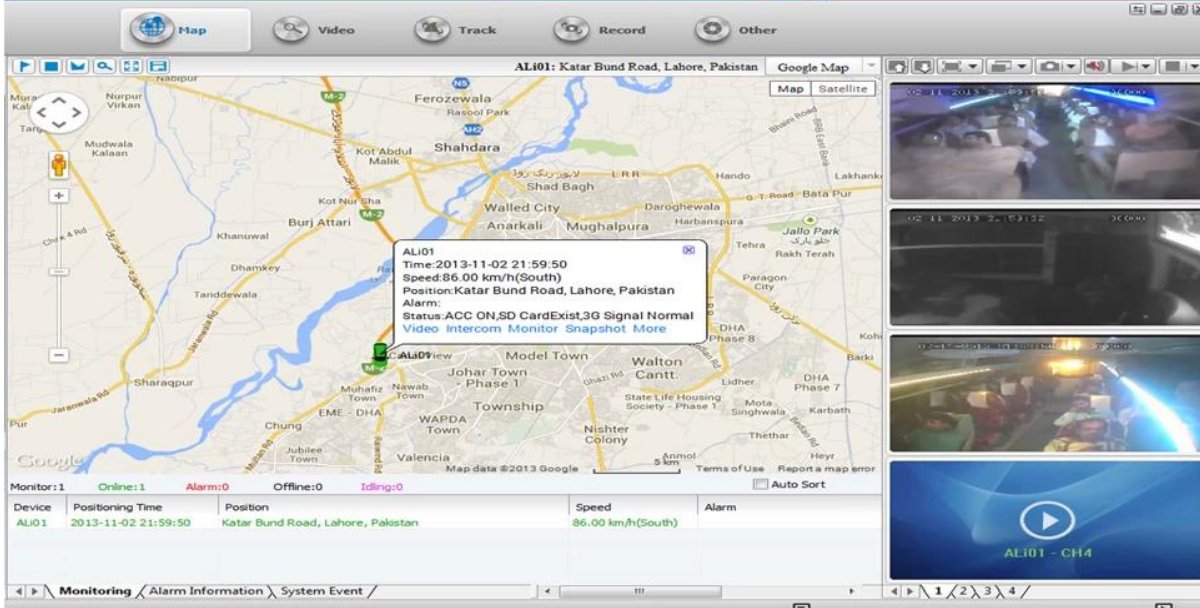
主要规格:

类别	规格	说明
基本配置	操作系统	Android
	处理器	高通骁龙 S550 : 1.5GHz 主频, 1.5GHz 协处理器
	内存	RAM: 512MB, ROM: 4GB
	存储	支持 MicroSD 卡, 最大支持 32GB
性能参数	摄像头	前置: 200万像素 CMOS, 后置: 300万像素 CMOS
	OSD	支持 OSD 功能
	视频	H.264, HISILICON 编解码器
	分辨率	支持 VGA, QVGA 分辨率
	帧率	QVGA: 400Kbps ~ 1.5Mbps, 4 帧/秒
	帧率	VGA: 1000kbps ~ 2Mbps, 4 帧/秒
	GPS	内置 GPS 模块
	其他	支持多种接口

꺻꺻꺻꺻	꺻꺻꺻꺻 꺻꺻꺻꺻	꺻꺻꺻꺻꺻꺻 꺻꺻꺻꺻꺻꺻 꺻꺻꺻 꺻꺻 꺻꺻꺻꺻꺻꺻
	꺻꺻꺻꺻 꺻꺻꺻꺻	1 꺻꺻꺻 꺻꺻꺻꺻 꺻꺻꺻꺻꺻꺻 꺻꺻 꺻꺻꺻꺻꺻꺻W
	꺻꺻꺻	G.726
꺻꺻꺻꺻	꺻꺻꺻꺻꺻꺻 꺻꺻꺻꺻	꺻꺻꺻꺻 micro-SD꺻 1 꺻꺻꺻꺻G ~ 32G
	꺻꺻꺻꺻 / 꺻꺻꺻 꺻꺻꺻꺻	ASF 꺻꺻꺻꺻꺻꺻 꺻꺻꺻 꺻꺻꺻 꺻꺻 꺻꺻꺻꺻꺻꺻 FAT32
	꺻꺻꺻꺻 꺻꺻꺻	꺻꺻꺻꺻꺻꺻 꺻꺻꺻 꺻꺻꺻꺻꺻꺻꺻꺻꺻 꺻꺻꺻꺻꺻꺻 꺻꺻꺻 꺻꺻꺻꺻꺻꺻
	꺻꺻꺻꺻 꺻꺻꺻꺻	꺻꺻꺻꺻 꺻꺻꺻꺻꺻꺻 꺻꺻꺻꺻꺻꺻 꺻꺻꺻꺻 꺻꺻꺻꺻꺻꺻 꺻꺻꺻꺻 꺻꺻꺻꺻꺻꺻
	꺻꺻꺻꺻 꺻꺻꺻꺻	꺻꺻꺻꺻꺻꺻 꺻꺻꺻꺻꺻꺻 꺻꺻꺻꺻 꺻꺻꺻꺻꺻꺻 꺻꺻꺻 꺻꺻꺻꺻 꺻꺻꺻꺻꺻꺻 꺻꺻꺻 꺻꺻꺻꺻 꺻꺻꺻꺻 꺻꺻꺻꺻꺻꺻 꺻꺻꺻꺻꺻꺻 16 꺻8 꺻4 꺻2 꺻꺻꺻 꺻꺻꺻꺻꺻꺻 꺻꺻꺻 꺻꺻 꺻꺻꺻꺻 꺻꺻꺻꺻 꺻꺻꺻꺻 꺻꺻꺻꺻꺻꺻 꺻꺻꺻 꺻꺻꺻꺻 꺻꺻꺻꺻 꺻꺻꺻꺻꺻꺻 꺻꺻꺻 꺻꺻꺻꺻 꺻꺻꺻꺻꺻꺻
USB 꺻꺻꺻꺻	꺻꺻꺻꺻 꺻꺻꺻꺻꺻꺻	꺻꺻꺻 꺻꺻꺻 꺻꺻꺻꺻꺻꺻 꺻꺻꺻꺻 꺻꺻꺻꺻 USB 꺻꺻꺻꺻꺻꺻꺻꺻 꺻꺻꺻꺻꺻꺻
꺻꺻꺻꺻꺻꺻 꺻꺻꺻꺻꺻꺻	꺻꺻꺻꺻꺻꺻꺻 꺻꺻꺻꺻	3 꺻꺻꺻꺻꺻꺻 꺻꺻꺻꺻 꺻꺻 꺻꺻꺻꺻꺻꺻G 꺻꺻꺻꺻 꺻꺻꺻꺻꺻꺻꺻꺻꺻 꺻꺻꺻꺻꺻꺻꺻 WCDMA꺻 CDMA2000꺻 TD-SCDMA 꺻꺻꺻꺻 꺻꺻꺻 꺻꺻 꺻꺻 꺻꺻 꺻꺻 꺻꺻꺻꺻꺻꺻 .꺻꺻꺻꺻꺻꺻꺻꺻꺻 EDGE.
꺻꺻꺻꺻 꺻꺻꺻꺻	꺻꺻꺻꺻꺻꺻 꺻꺻꺻꺻꺻꺻꺻	꺻꺻꺻꺻 꺻꺻꺻꺻꺻꺻 꺻꺻꺻꺻꺻꺻 꺻꺻꺻 꺻꺻꺻꺻 꺻꺻꺻꺻
꺻꺻꺻꺻꺻꺻 꺻꺻꺻꺻꺻꺻꺻꺻	꺻꺻꺻	2.4 꺻꺻꺻꺻
	꺻꺻꺻	TFT
	꺻꺻꺻꺻	480 * 234
꺻꺻꺻꺻	꺻꺻꺻꺻 꺻꺻꺻꺻	꺻꺻꺻꺻꺻꺻 꺻꺻꺻 SD 꺻꺻꺻꺻꺻꺻 꺻꺻꺻꺻꺻꺻
꺻꺻꺻꺻 꺻꺻꺻꺻	꺻꺻꺻꺻꺻꺻 꺻꺻꺻꺻	-20 ° C ~ + 50 ° C
	꺻꺻꺻꺻꺻꺻	20꺻 80 꺻꺻꺻꺻
꺻꺻꺻꺻	꺻꺻꺻꺻꺻꺻 꺻꺻꺻꺻	50 (W) X90 (H) X28 (D) 꺻꺻
	꺻꺻꺻꺻꺻꺻 꺻꺻꺻꺻	70 (W) X110 (H) X28 (D) 꺻꺻
꺻꺻꺻꺻	꺻꺻꺻꺻꺻꺻 꺻꺻꺻꺻	95 :꺻꺻꺻꺻꺻꺻 꺻꺻꺻꺻꺻꺻G꺻 307.5 :꺻꺻꺻꺻꺻 꺻꺻꺻꺻꺻꺻꺻꺻꺻g
	꺻꺻꺻꺻꺻꺻 꺻꺻꺻꺻	238 :꺻꺻꺻꺻꺻꺻 꺻꺻꺻꺻꺻꺻g꺻 352 :꺻꺻꺻꺻꺻 꺻꺻꺻꺻꺻꺻꺻꺻꺻g

꺻꺻꺻꺻 CMS 꺻꺻꺻꺻꺻꺻꺻 꺻꺻꺻꺻꺻꺻:

**Vehicle with device for test in AC Coach
Lahore to Sadiq Abad near motorway @ 86Km/h**

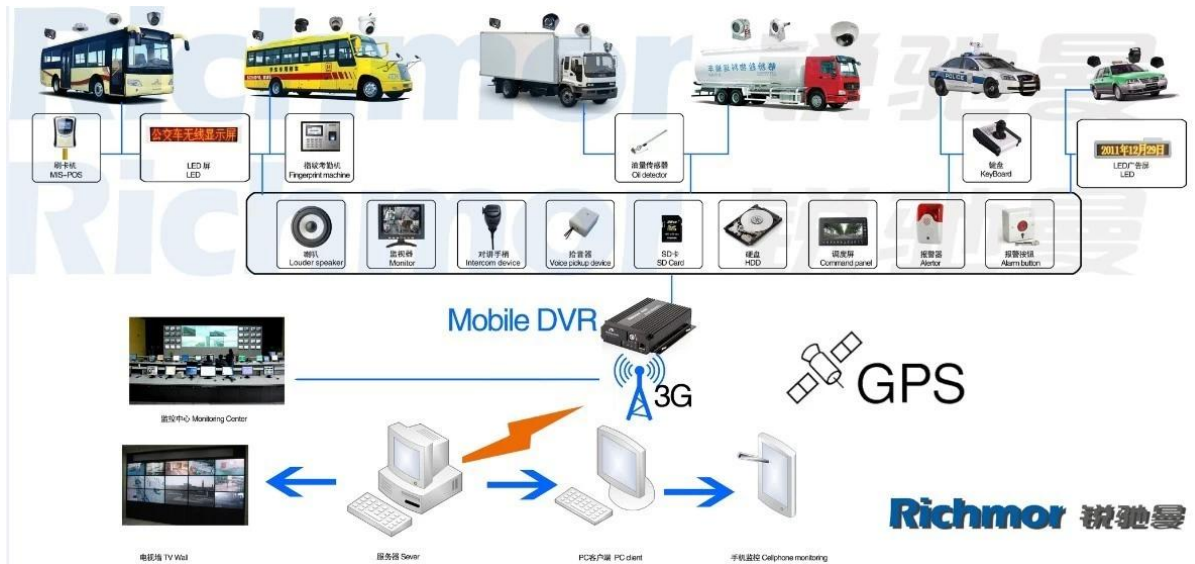


□□□□□□ □□□□ □□□□□□ □□□□□□ □□□□□□ □□□□ □□□□

□ IOS & □□□□□□ □□□□□□ □□□□□□ □□□□□□ □□□□□□ OS



□□□□□□ **DVR** □□□□□□□□ □□□□□□



□□□□:

VERIFICATION OF CONFORMITY

Verification of Conformity
Reference No.: LC0134000970

Responsible Party: Shenzhen Reaktor Technology Development Co., LTD.
Address: 27 No.44 West Longgang Road, Longhua New District, Shenzhen, China
Product: Camera
Models: RCM-PC20A, RCM-PC20L, RCM-LP20A, RCM-LP20L, RCM-AP20A, RCM-AP20L, RCM-300, RCM-300L, RCM-400, RCM-400L, RCM-500, RCM-500L, RCM-600, RCM-600L, RCM-800, RCM-800L, RCM-1000, RCM-1000L
Trade Mark: Reaktor
Standards: FCC CFR 47 PART 15 Subpart B, 2011, ANSI C63.4-2008

Important note:
This device is in compliance with Part 15 of the FCC Rules and Regulations for radio frequency devices. Operation of the product is subject to the following two conditions:
(1) This device may not cause harmful interference, and (2) this device must accept any interference received, including interference that may cause undesired operation.
The EMC Directive 2014/53/EU
EN 61326: 2014, EN 61326-2: 2014
The test was performed in normal operation mode. The test results apply only to the particular sample tested and to the specific test carried out. This certificate applies specifically to the sample investigated in our test reference number only.
The CE marking is shown below and is affixed to the product after preparation of necessary technical documentation.
Clear marked direction form to be obtained.

Shenzhen LCC Compliance Testing Laboratory Ltd.
17, Jingqian Industrial Park, Tengda Road, Bao'an Dist., Bao'an District, Shenzhen, Guangdong, China
Tel: 86755-82911122 Fax: 86755-82911122
http://www.lcc-test.com Email: admin@lcc-test.com

Manager
April 16, 2013

VERIFICATION OF CONFORMITY

Verification of Conformity
Reference No.: LC0134000970

Responsible Party: Shenzhen Reaktor Technology Development Co., LTD.
Address: 27 No.44 West Longgang Road, Longhua New District, Shenzhen, China
Product: Media DVR
Models: RCM-M200A, RCM-M200L, RCM-M300A, RCM-M300L, RCM-M400A, RCM-M400L, RCM-M500A, RCM-M500L, RCM-M600A, RCM-M600L, RCM-M800A, RCM-M800L
Trade Mark: Reaktor
Standards: FCC CFR 47 PART 15 Subpart B, 2011, ANSI C63.4-2008

Important note:
This device is in compliance with Part 15 of the FCC Rules and Regulations for radio frequency devices. Operation of the product is subject to the following two conditions:
(1) This device may not cause harmful interference, and (2) this device must accept any interference received, including interference that may cause undesired operation.
The EMC Directive 2014/53/EU
EN 61326: 2014, EN 61326-2: 2014
The test was performed in normal operation mode. The test results apply only to the particular sample tested and to the specific test carried out. This certificate applies specifically to the sample investigated in our test reference number only.
The CE marking is shown below and is affixed to the product after preparation of necessary technical documentation.
Clear marked direction form to be obtained.

Shenzhen LCC Compliance Testing Laboratory Ltd.
17, Jingqian Industrial Park, Tengda Road, Bao'an Dist., Bao'an District, Shenzhen, Guangdong, China
Tel: 86755-82911122 Fax: 86755-82911122
http://www.lcc-test.com Email: admin@lcc-test.com

Manager
April 16, 2013

CERTIFICATE OF CONFORMITY
Reference No.: LC0134000970

Applicant: Shenzhen Reaktor Technology Development Co., LTD.
Address: 27 No.44 West Longgang Road, Longhua New District, Shenzhen, China
Product: Media DVR
Models: RCM-M200A, RCM-M200L, RCM-M300A, RCM-M300L, RCM-M400A, RCM-M400L, RCM-M500A, RCM-M500L, RCM-M600A, RCM-M600L, RCM-M800A, RCM-M800L
Trade Mark: Reaktor

The submitted products have been tested in accordance with the test standards and found in compliance with the following European Directive:
The EMC Directive 2014/53/EU
EN 61326: 2014, EN 61326-2: 2014
The test was performed in normal operation mode. The test results apply only to the particular sample tested and to the specific test carried out. This certificate applies specifically to the sample investigated in our test reference number only.
The CE marking is shown below and is affixed to the product after preparation of necessary technical documentation.
Clear marked direction form to be obtained.

Shenzhen LCC Compliance Testing Laboratory Ltd.
17, Jingqian Industrial Park, Tengda Road, Bao'an Dist., Bao'an District, Shenzhen, Guangdong, China
Tel: 86755-82911122 Fax: 86755-82911122
http://www.lcc-test.com Email: admin@lcc-test.com

Manager
April 16, 2013

CERTIFICATE OF CONFORMITY

CERTIFICATE of Conformity
Reference No.: LC0134000970

Applicant: Shenzhen Reaktor Technology Development Co., LTD.
Address: 27 No.44 West Longgang Road, Longhua New District, Shenzhen, China
Product: Camera
Models: RCM-PC20A, RCM-PC20L, RCM-LP20A, RCM-LP20L, RCM-AP20A, RCM-AP20L, RCM-300, RCM-300L, RCM-400, RCM-400L, RCM-500, RCM-500L, RCM-600, RCM-600L, RCM-800, RCM-800L, RCM-1000, RCM-1000L
Trade Mark: Reaktor

The submitted products have been tested in accordance with the test standards and found in compliance with the following European Directive:
The EMC Directive 2014/53/EU
EN 61326: 2014, EN 61326-2: 2014
The test was performed in normal operation mode. The test results apply only to the particular sample tested and to the specific test carried out. This certificate applies specifically to the sample investigated in our test reference number only.
The CE marking is shown below and is affixed to the product after preparation of necessary technical documentation.
Clear marked direction form to be obtained.

Shenzhen LCC Compliance Testing Laboratory Ltd.
17, Jingqian Industrial Park, Tengda Road, Bao'an Dist., Bao'an District, Shenzhen, Guangdong, China
Tel: 86755-82911122 Fax: 86755-82911122
http://www.lcc-test.com Email: admin@lcc-test.com

Manager
April 16, 2013

CERTIFICATE OF CONFORMITY

CERTIFICATE of Conformity
Reference No.: LC0134000970

Applicant: Shenzhen Reaktor Technology Development Co., LTD.
Address: 27 No.44 West Longgang Road, Longhua New District, Shenzhen, China
Trade Mark: Reaktor
Product: Camera
Models: RCM-PC20A, RCM-PC20L, RCM-LP20A, RCM-LP20L, RCM-AP20A, RCM-AP20L, RCM-300, RCM-300L, RCM-400, RCM-400L, RCM-500, RCM-500L, RCM-600, RCM-600L, RCM-800, RCM-800L, RCM-1000, RCM-1000L

The test result is issued by the Company subject to the General Conditions of Service printed on the back of this report. The results shown in this test report refer only to the particular tested sample unless otherwise stated. This Test Report cannot be reproduced in any form without prior written permission of the Company.
Clear marked direction form to be obtained.

Shenzhen LCC Compliance Testing Laboratory Ltd.
17, Jingqian Industrial Park, Tengda Road, Bao'an Dist., Bao'an District, Shenzhen, Guangdong, China
Tel: 86755-82911122 Fax: 86755-82911122
http://www.lcc-test.com Email: admin@lcc-test.com

Manager
April 16, 2013

CERTIFICATE OF CONFORMITY

CERTIFICATE of Conformity
Reference No.: LC0134000970

Applicant: Shenzhen Reaktor Technology Development Co., LTD.
Address: 27 No.44 West Longgang Road, Longhua New District, Shenzhen, China
Trade Mark: Reaktor
Product: Media DVR
Models: RCM-M200A, RCM-M200L, RCM-M300A, RCM-M300L, RCM-M400A, RCM-M400L, RCM-M500A, RCM-M500L, RCM-M600A, RCM-M600L, RCM-M800A, RCM-M800L

The test report is issued by the Company subject to the General Conditions of Service printed on the back of this report. The results shown in this test report refer only to the particular tested sample unless otherwise stated. This Test Report cannot be reproduced in any form without prior written permission of the Company.
Clear marked direction form to be obtained.

Shenzhen LCC Compliance Testing Laboratory Ltd.
17, Jingqian Industrial Park, Tengda Road, Bao'an Dist., Bao'an District, Shenzhen, Guangdong, China
Tel: 86755-82911122 Fax: 86755-82911122
http://www.lcc-test.com Email: admin@lcc-test.com

Manager
April 16, 2013

□□□□ □□ □□□□□□□□:



SD Mobile DVR with 3G GPS



SD Mobile DVR with WIFI 3G GPS G-Sensor

□□□□□□ □□□□:

□□□□ □□□□: T / T□ □□ □□ □□□□ □□□□ □□□□□□ □□□□□□

客戶要求 包裝 5 天內完成 :請參考 包裝 單 內容。

客戶 12 :請參考

客戶要求: DHL, UPS, 船 或 空 運 包裝 內容 單 內容。

客戶要求 包裝 內容:



Richmor Brand Package

Standard Package

請參考 包裝 單 內容

客戶要求 包裝 內容 1. 包裝 內容

2. 包裝 內容 包裝 內容 單 內容 DVR 內容。

3. 包裝 內容 內容 內容

客戶 要求 內容 內容 內容 內容 內容 內容 內容 .4 內容。

客戶 要求 內容 內容 內容 內容 內容 .5 內容。

客戶 要求 內容 內容 內容 內容 內容 內容 內容 / 內容 內容 內容 :請參考 內容 內容。

客戶 內容:



Richmor

OEM & ODM Service

Brasil World Cup Supplier



Inner Training after study from Alibaba in July



Technical Training For Fast Response to Customer Richmor 锐驰曼



lecturer for Execution